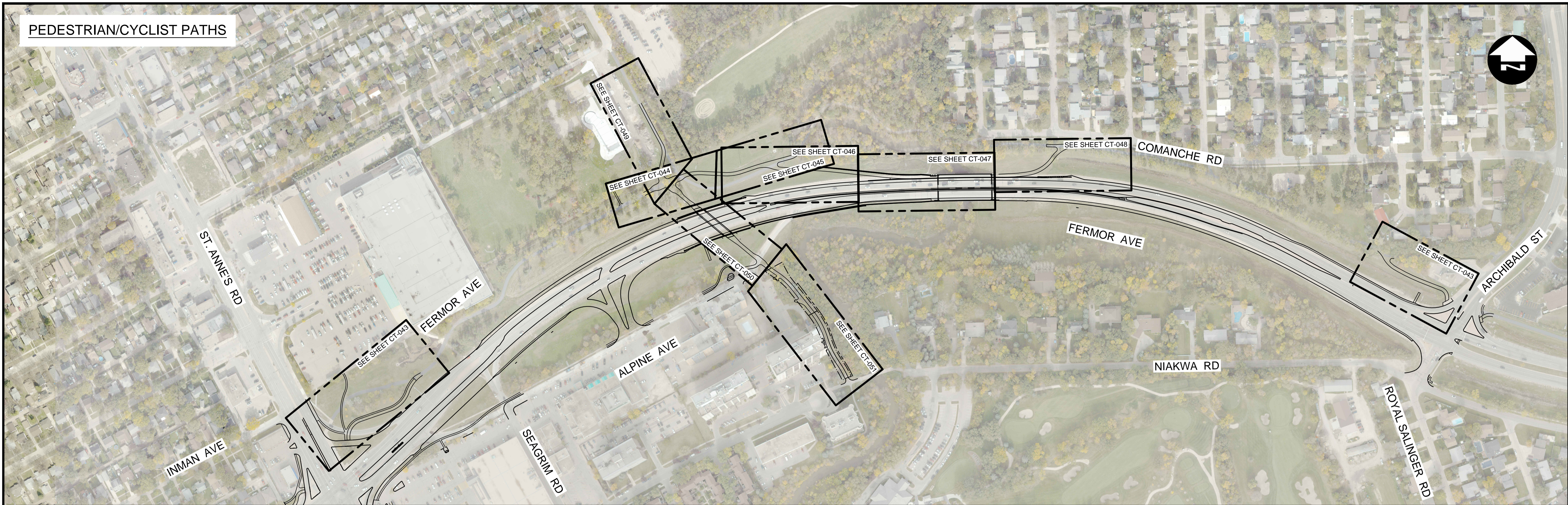
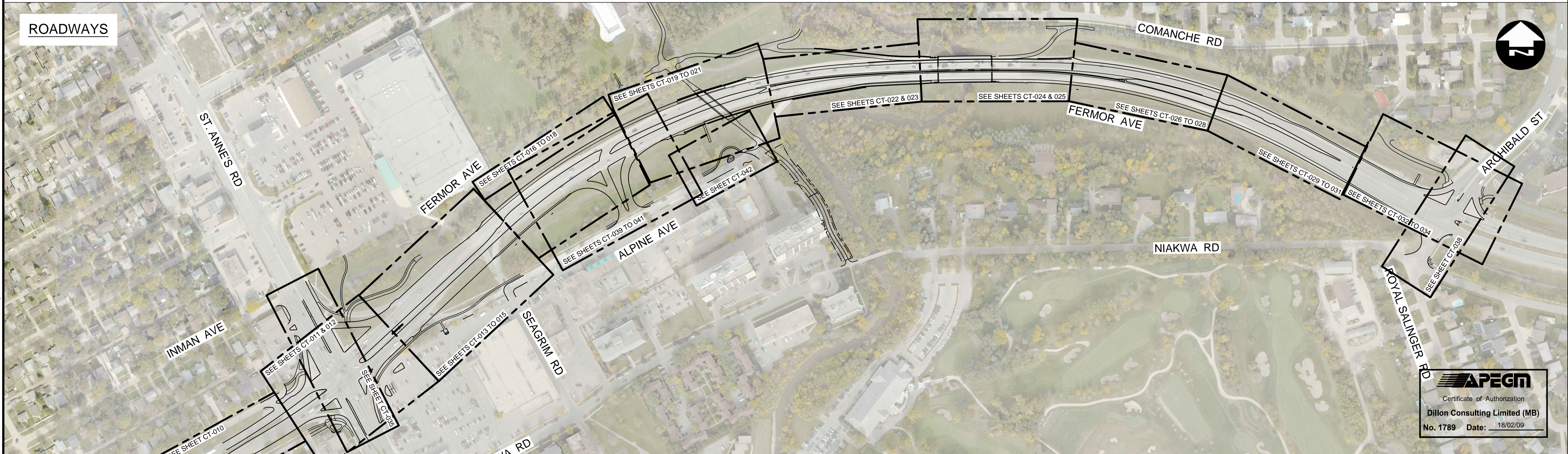


PEDESTRIAN/CYCLIST PATHS



ROADWAYS



**APEGM**  
 Certificate of Authorization  
**Dillon Consulting Limited (MB)**  
 No. 1789 Date: 18/02/09

<p>UNDERGROUND STRUCTURES</p> <p>SUPV. U/G STRUCTURES DATE</p> <p>LOCATION OF UNDERGROUND STRUCTURES AS SHOWN ARE BASED ON THE BEST INFORMATION AVAILABLE, BUT NO GUARANTEE IS GIVEN THAT ALL EXISTING UTILITIES ARE SHOWN OR THAT THE GIVEN LOCATIONS ARE EXACT. CONFIRMATION OF EXISTENCE AND EXACT LOCATION OF ALL SERVICES MUST BE OBTAINED FROM THE INDIVIDUAL UTILITIES BEFORE PROCEEDING WITH CONSTRUCTION.</p>		<p>B.M. ELEV. SEE SHEET CT-001 FOR CONTROL POINT INFORMATION</p>		<p>DESIGNED BY JAT</p> <p>DRAWN BY TJH</p> <p>CHECKED BY JNC</p> <p>APPROVED BY JNC</p> <p>HOR. SCALE 1:2000</p> <p>VERTICAL -</p>		<p>ENGINEER'S SEAL</p> <p>PROVINCE OF MANITOBA</p> <p>REGISTERED PROFESSIONAL ENGINEER</p> <p><b>J.N. CRANG</b></p>		<p><b>THE CITY OF WINNIPEG</b></p> <p>PUBLIC WORKS DEPARTMENT</p> <p><b>FERMOR AVENUE BRIDGE OVER SEINE RIVER</b></p> <p>BRIDGE REHABILITATION, PEDESTRIAN-CYCLIST UNDERPASS STRUCTURE AND ROADWORKS FROM ST. ANNE'S ROAD TO ARCHIBALD STREET</p>		<p>CITY DRAWING NUMBER P-3489-2017-CT-008</p> <p>SHEET 008 OF 067</p> <p>CONSULTANT DRAWING NUMBER CT-008</p>	
<p>0 ISSUED FOR TENDER 18/02/09 JNC</p> <p>NO. REVISIONS DATE BY</p>		<p>RELEASED FOR CONSTRUCTION</p> <p>DATE</p>		<p>CONSULTANT PROJECT NUMBER 17-5932</p>		<p>GENERAL ARRANGEMENT</p>					

G:\CAD\175932\Drawings\Roadworks\Contract\175932-CO-N-CT-GENERAL-ARRANGEMENT.dwg