

P-STANNES-SB-RTL-TO-FERMOR						
SEGMENT	STATION (START)	STATION (END)	NORTHING (START)	EASTING (START)	NORTHING (END)	EASTING (END)
L11	1+046.618	1+047.618	5524243.341	636243.378	5524243.945	636244.175
C13	1+047.618	1+052.618	5524243.945	636244.175	5524246.979	636248.149
C14	1+052.618	1+073.893	5524246.979	636248.149	5524265.793	636255.736
L12	1+073.893	1+106.157	5524265.793	636255.736	5524297.702	636250.960
C15	1+106.157	1+126.349	5524297.702	636250.960	5524316.799	636244.699
L13	1+126.349	1+155.795	5524316.799	636244.699	5524342.847	636230.968

CURVE DATA						
#	R.	Δc	Tc	L.	L.C.	
C13	692.300	0°24'50"	2.500	5.000	5.000	
C14	20.000	60°56'53"	11.769	21.275	20.286	
C15	60.000	19°16'56"	10.193	20.192	20.097	

P-FERMOR-EB-RTL-TO-STANNES						
SEGMENT	STATION (START)	STATION (END)	NORTHING (START)	EASTING (START)	NORTHING (END)	EASTING (END)
L19	1+000.000	1+001.000	5524215.194	636254.045	5524215.749	636254.877
C21	1+001.000	1+001.567	5524215.749	636254.877	5524216.064	636255.348
C22	1+001.567	1+019.603	5524216.064	636255.348	5524222.433	636272.059
L20	1+019.603	1+033.745	5524222.433	636272.059	5524224.389	636286.065
C23	1+033.745	1+052.068	5524224.389	636286.065	5524216.564	636301.388
L21	1+052.068	1+057.068	5524216.564	636301.388	5524212.148	636303.732

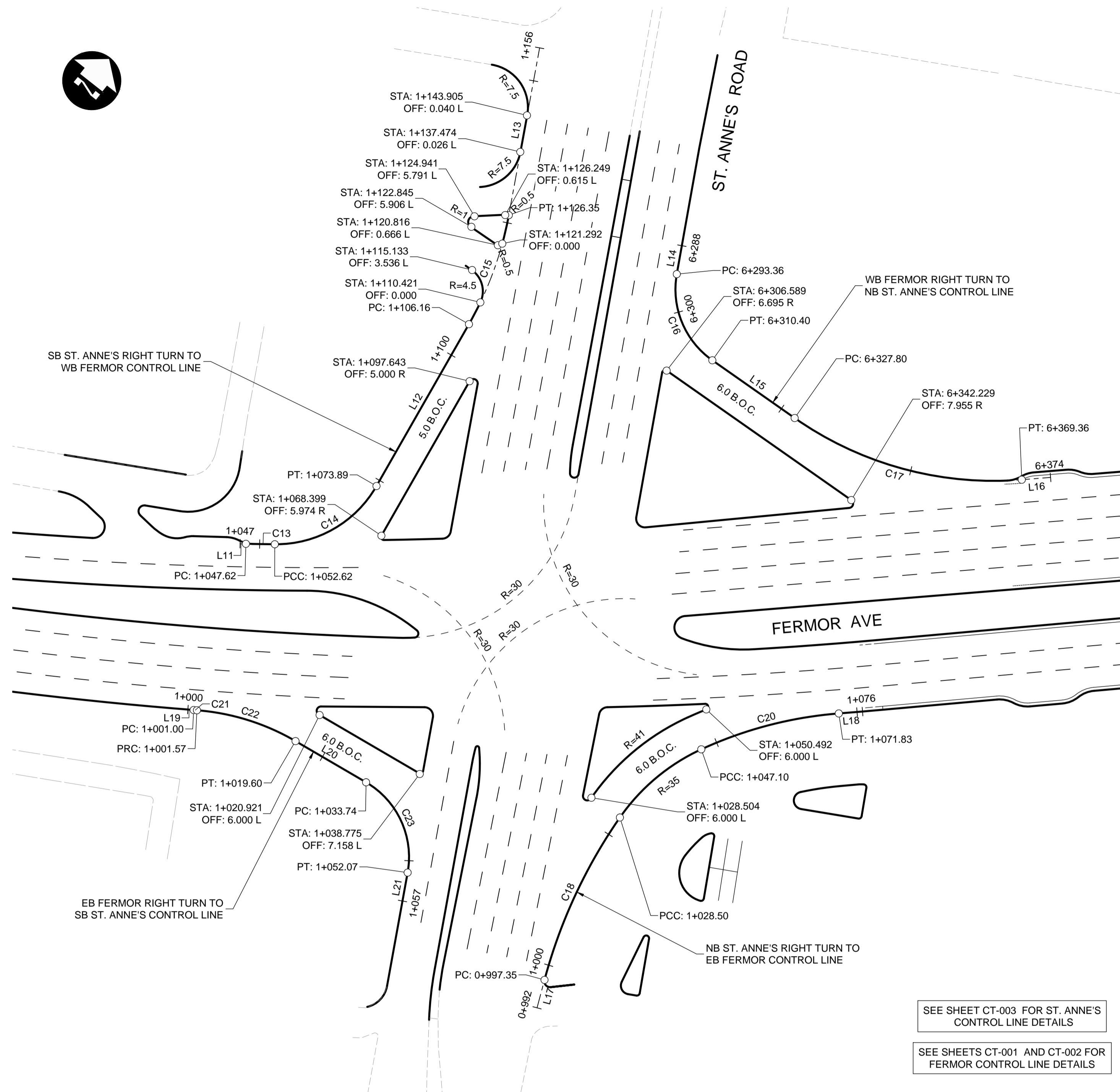
CURVE DATA						
#	R.	Δc	Tc	L.	L.C.	
C21	710.900	0°02'45"	0.284	0.567	0.567	
C22	40.000	25°50'03"	9.174	18.036	17.883	
C23	15.000	69°59'29"	10.501	18.324	17.205	

P-FERMOR-WB-RTL-TO-STANNES						
SEGMENT	STATION (START)	STATION (END)	NORTHING (START)	EASTING (START)	NORTHING (END)	EASTING (END)
L14	6+288.359	6+293.359	5524331.183	636271.497	5524326.773	636273.853
C16	6+293.359	6+310.396	5524326.773	636273.853	5524318.865	636287.918
L15	6+310.396	6+327.803	5524318.865	636287.918	5524319.833	636305.298
C17	6+327.803	6+369.364	5524319.833	636305.298	5524335.771	636342.786
L16	6+369.364	6+374.364	5524335.771	636342.786	5524339.173	636346.450

CURVE DATA						
#	R.	Δc	Tc	L.	L.C.	
C16	15.000	65°04'34"	9.570	17.037	16.136	
C17	60.000	39°41'15"	21.653	41.561	40.735	

P-STANNES-NB-RTL-TO-FERMOR						
SEGMENT	STATION (START)	STATION (END)	NORTHING (START)	EASTING (START)	NORTHING (END)	EASTING (END)
L17	0+992.353	0+997.353	5524212.037	636333.470	5524216.631	636331.496
C18	0+997.353	1+028.504	5524216.631	636331.496	5524246.790	636324.344
C20	1+047.103	1+071.829	5524264.782	636328.102	5524284.391	636342.953
L18	1+071.829	1+075.947	5524284.391	636342.953	5524287.186	636345.977

CURVE DATA						
#	R.	Δc	Tc	L.	L.C.	
C18	90.000	19°49'53"	15.733	31.151	30.996	
C20	70.000	20°14'18"	12.493	24.726	24.598	



SEE SHEET CT-003 FOR ST. ANNE'S CONTROL LINE DETAILS

SEE SHEETS CT-001 AND CT-002 FOR FERMOR CONTROL LINE DETAILS

LEGEND
 B.O.C. = BACK OF CURB
 F.O.G. = FACE OF 600mm WIDE CURB AND GUTTER PAN

UNDERGROUND STRUCTURES SUPV. U/G STRUCTURES DATE	B.M. ELEV. SEE SHEET CT-001 FOR CONTROL POINT INFORMATION	DESIGNED BY JAT		ENGINEER'S SEAL 		CITY DRAWING NUMBER P-3489-2017-CT-004
		DRAWN BY TJH				
		CHECKED BY JNC	HORIZONTAL SCALE 1:500 VERTICAL -	CONTROL LINE GEOMETRY - FERMOR-ST. ANNE'S INTERSECTION	CONSULTANT DRAWING NUMBER CT-004	
		APPROVED BY JNC				
LOCATION OF UNDERGROUND STRUCTURES AS SHOWN ARE BASED ON THE BEST INFORMATION AVAILABLE, BUT NO GUARANTEE IS GIVEN THAT ALL EXISTING UTILITIES ARE SHOWN OR THAT THE GIVEN LOCATIONS ARE EXACT. CONFIRMATION OF EXISTENCE AND EXACT LOCATION OF ALL SERVICES MUST BE OBTAINED FROM THE INDIVIDUAL UTILITIES BEFORE PROCEEDING WITH CONSTRUCTION.	0 ISSUED FOR TENDER 18/02/09 JNC					
	NO. REVISIONS	DATE	BY	DATE		