

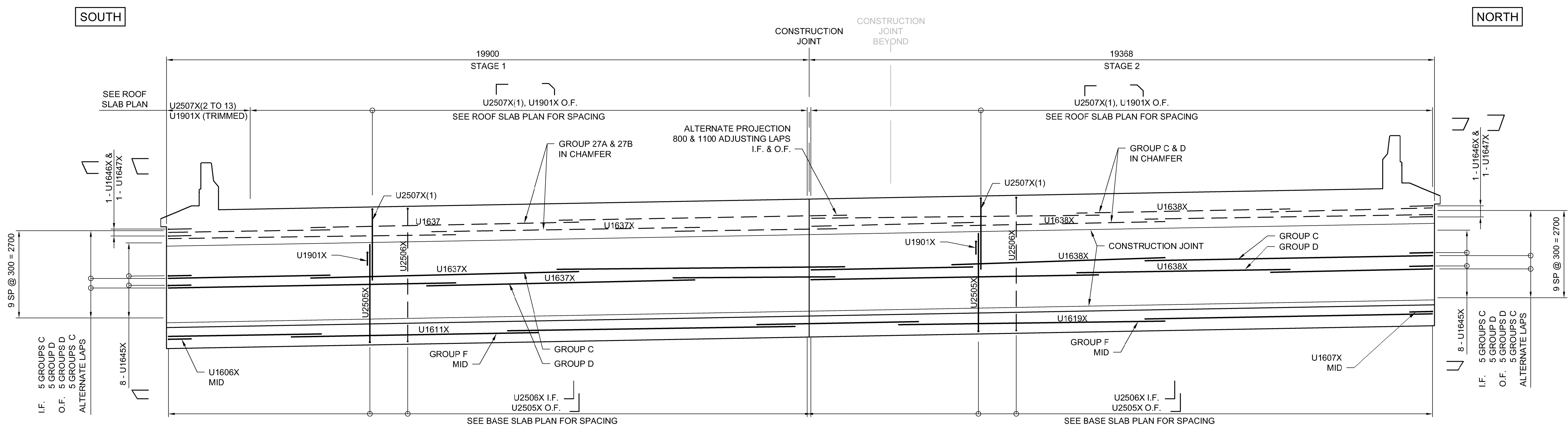
1 WEST ELEVATION REINFORCING - STAGES 1 & 2

CS-073
CS-074
CS-075
1:75
REINFORCING FOR INSIDE FACE AND OUTSIDE FACE

LONGITUDINAL BAR GROUPS

GROUP C	U1610X	*	U1611X
GROUP D	U1611X	*	U1610X
GROUP F	U1611X	*	U1609X(1)

* CENTER BAR OF GROUP INDICATED ON PLAN



2 EAST ELEVATION REINFORCING - STAGES 1 & 2

CS-073
CS-074
CS-075
1:75
REINFORCING FOR INSIDE FACE AND OUTSIDE FACE



DESIGNED BY	DRA	CHECKED BY	SSR
DRAWN BY	DB	APPROVED BY	MBL
HOR. SCALE	AS SHOWN	RELEASED FOR CONSTRUCTION	
VERTICAL	AS SHOWN		
ISSUED FOR TENDER	18/02/09	DRA	
NO. REVISIONS	DATE	BY	DATE
			2018/02/09

ENGINEER'S SEAL
PROVINCE OF MANITOBA
D.R.C. AMORIM
Member 33215
REGISTERED PROFESSIONAL ENGINEER
CONSULTANT PROJECT NUMBER
17-5932

THE CITY OF WINNIPEG
PUBLIC WORKS DEPARTMENT
Winnipeg
FERMOR AVENUE BRIDGE OVER SEINE RIVER
BRIDGE RE-HABILITATION, PEDESTRIAN-CYCLIST UNDERPASS STRUCTURE AND ROADWORKS FROM ST. ANNE'S ROAD TO ARCHIBALD STREET
PEDESTRIAN-CYCLIST UNDERPASS
REINFORCING DETAILS 5 OF 5
CITY DRAWING NUMBER
U-243-2017-CS-076
SHEET 076 OF 100
CONSULTANT DRAWING NUMBER
CS-076

G:\CAD\175932\Drawings\Structural\Underpass\CON-CS-REINF DETAILS 3.dwg