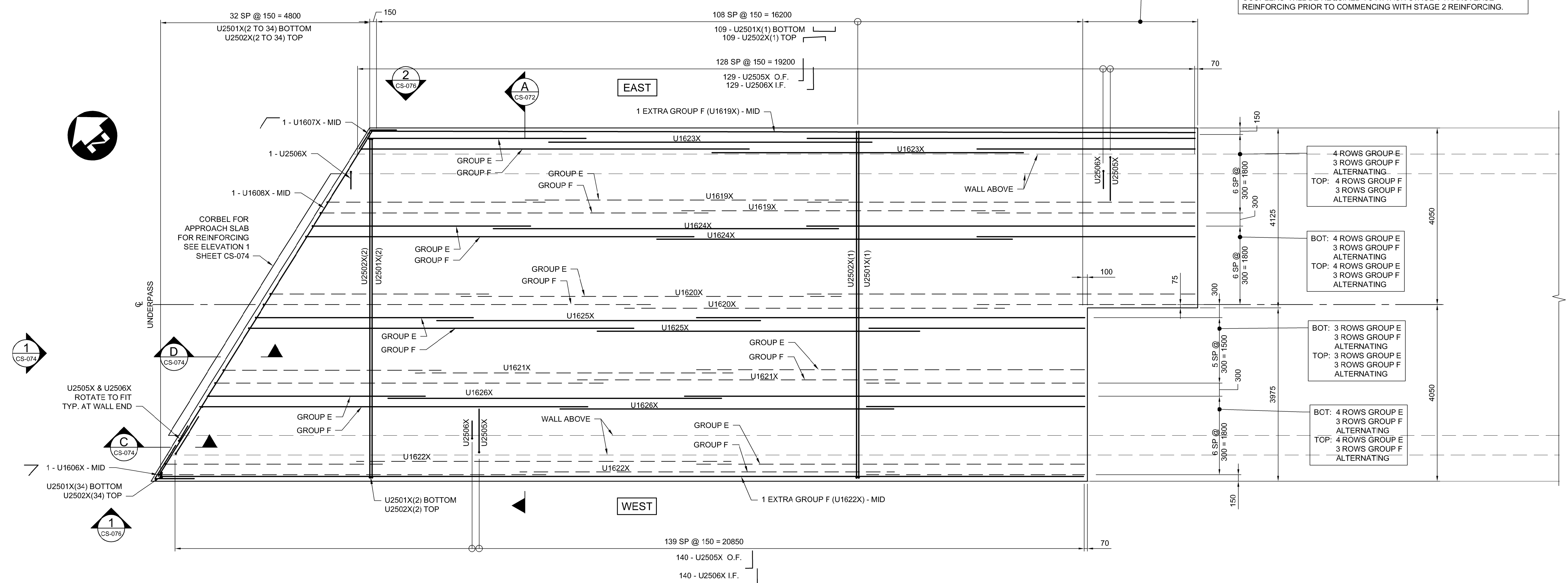
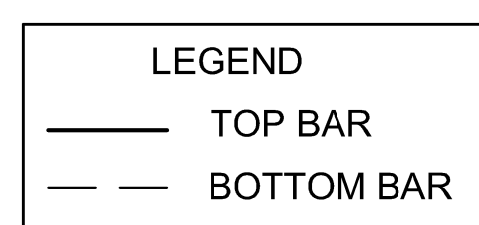
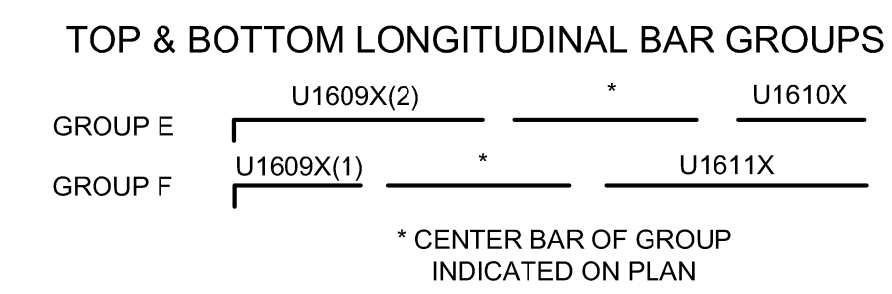


NOTE:
 IN THIS CORNER, TRANSVERSE BARS FROM STAGE 1 WERE TO BE PLACED
 FULL LENGTH PROJECTING FROM TOP AND BOTTOM SLABS. IF ANY WERE
 CUT DUE TO INTERFERENCE WITH TEMPORARY SHORING, STEEL
 COUPLERS WILL BE REQUIRED TO ATTACH STAGE 1 TRANSVERSE
 REINFORCING PRIOR TO COMMENCING WITH STAGE 2 REINFORCING.



BASE SLAB REINFORCING PLAN - STAGE 2
 1:50
 TOP AND BOTTOM REINFORCING
 NORTH SLAB (STAGE 2)



G:\CAD\175932\Drawings\Structural\Contract\UNDERPASS\175932-UNDERPASS-CON-CS-REINF-DETAILS-2B.dwg



NO.	REVISIONS	DATE	BY	DATE
0	ISSUED FOR TENDER	18/02/09	DRA	

		DESIGNED BY	DRA	CHECKED BY	SSR
		DRAWN BY	DB	APPROVED BY	MBL
HOR. SCALE		AS SHOWN		RELEASED FOR CONSTRUCTION	
VERTICAL SCALE		AS SHOWN			
DATE		2018/02/09		DATE	

ENGINEER'S SEAL

CONSULTANT PROJECT NUMBER
17-5932

THE CITY OF WINNIPEG
 PUBLIC WORKS DEPARTMENT

FERMOR AVENUE BRIDGE OVER SEINE RIVER
 BRIDGE RE-HABILITATION, PEDESTRIAN-CYCLIST UNDERPASS STRUCTURE
 AND ROADWORKS FROM ST. ANNE'S ROAD TO ARCHIBALD STREET

PEDESTRIAN-CYCLIST UNDERPASS
 REINFORCING DETAILS 4 OF 5

CITY DRAWING NUMBER
U-243-2017-CS-075

SHEET 075 OF 100

CONSULTANT DRAWING NUMBER
CS-075