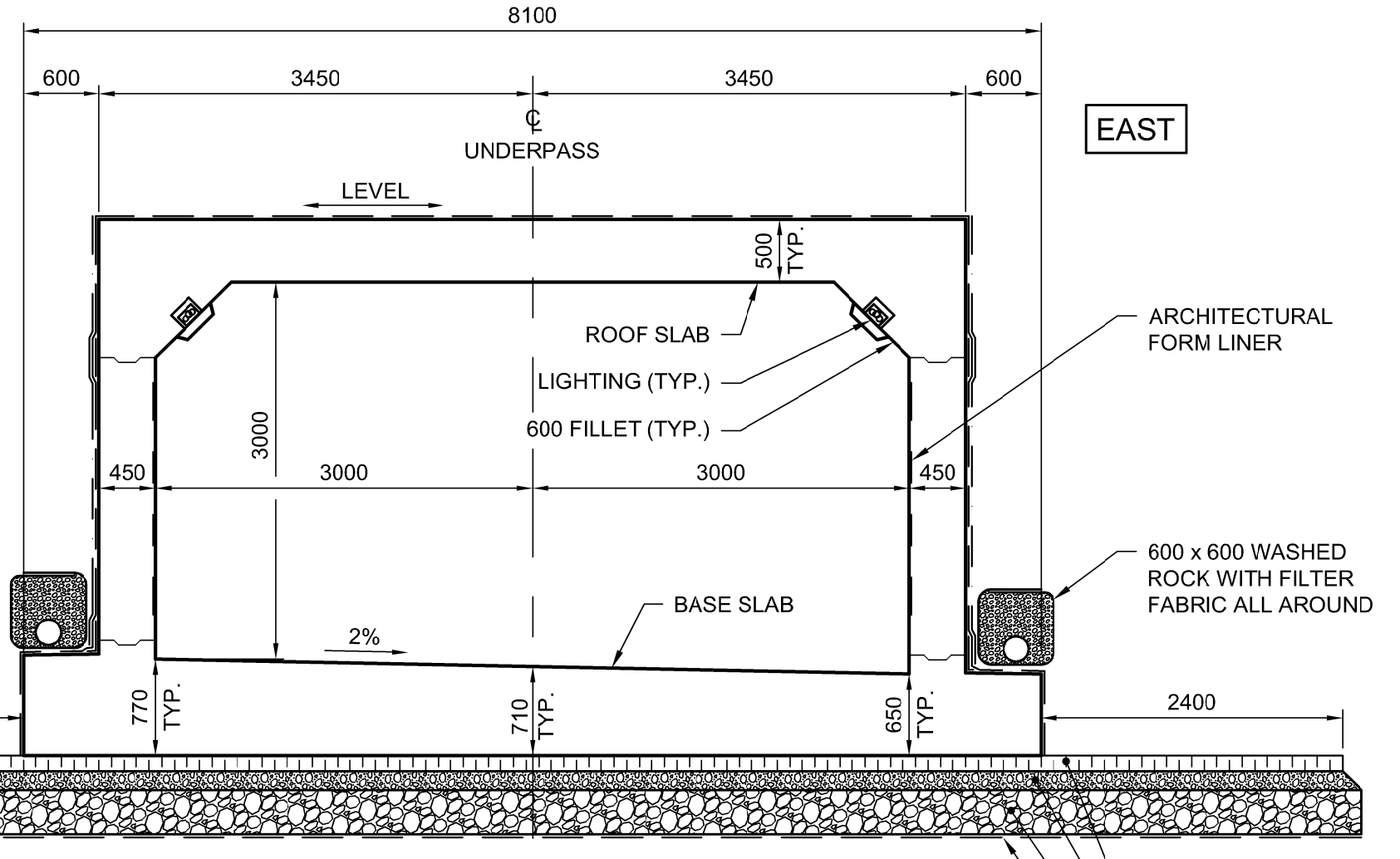
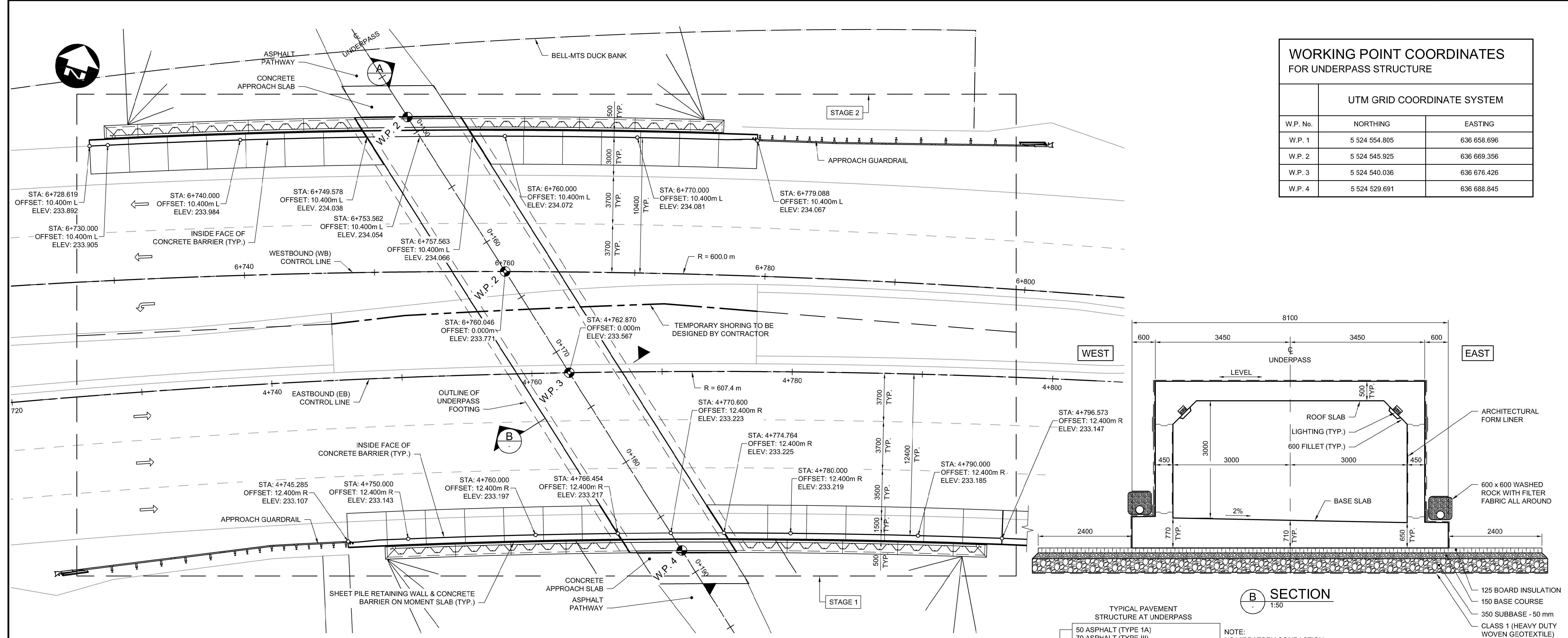


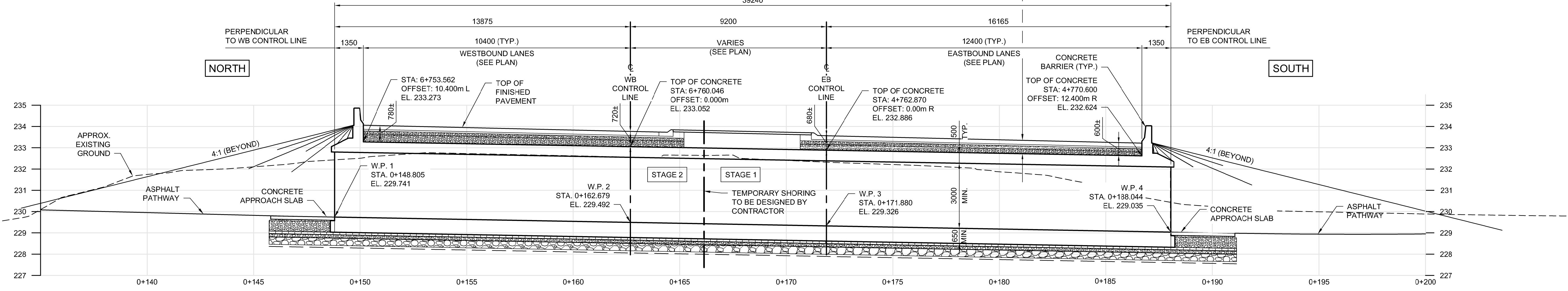
WORKING POINT COORDINATES FOR UNDERPASS STRUCTURE		
UTM GRID COORDINATE SYSTEM		
W.P. No.	NORTHING	EASTING
W.P. 1	5 524 554.805	636 658.696
W.P. 2	5 524 545.925	636 669.356
W.P. 3	5 524 540.036	636 676.426
W.P. 4	5 524 529.691	636 688.845



TYPICAL PAVEMENT STRUCTURE AT UNDERPASS

- 50 ASPHALT (TYPE 1A)
- 70 ASPHALT (TYPE III)
- 70 ASPHALT (TYPE III)
- 75 LIMESTONE BASE COURSE - 50 mm
- 335 TO 515 LIMESTONE SUB-BASE - 50 mm

NOTE: NO VIBRATORY COMPACTION SHALL BE USED WITHIN 1 m OF UNDERPASS ROOF SLAB



NOTE: ALL DIMENSIONS PROVIDED ALONG THE UNDERPASS C UNLESS NOTED OTHERWISE.



DESIGNED BY	DRA	CHECKED BY	SSR
DRAWN BY	CGC	APPROVED BY	MBL
HOR. SCALE	AS SHOWN	RELEASED FOR CONSTRUCTION	
VERTICAL	AS SHOWN		
ISSUED FOR TENDER	18/02/09	DRA	
NO. REVISIONS	DATE	BY	DATE
0	2018/02/09	DRA	

ENGINEER'S SEAL

PROVINCE OF MANITOBA
REGISTERED PROFESSIONAL ENGINEER

D.R.C. AMORIM
Member 33215

CONSULTANT PROJECT NUMBER
17-5932

THE CITY OF WINNIPEG
PUBLIC WORKS DEPARTMENT

FERMOR AVENUE BRIDGE OVER SEINE RIVER
BRIDGE RE-ABILITATION, PEDESTRIAN-CYCLIST UNDERPASS STRUCTURE AND ROADWORKS FROM ST. ANNE'S ROAD TO ARCHIBALD STREET

CITY DRAWING NUMBER
U-243-2017-CS-065

SHEET 065 OF 100

CONSULTANT DRAWING NUMBER
CS-065

PEDESTRIAN-CYCLIST UNDERPASS
GENERAL ARRANGEMENT

G:\CAD\175932\Drawings\Structural\Underpass\CON-CS-GENERAL_ARRANGEMENT.dwg