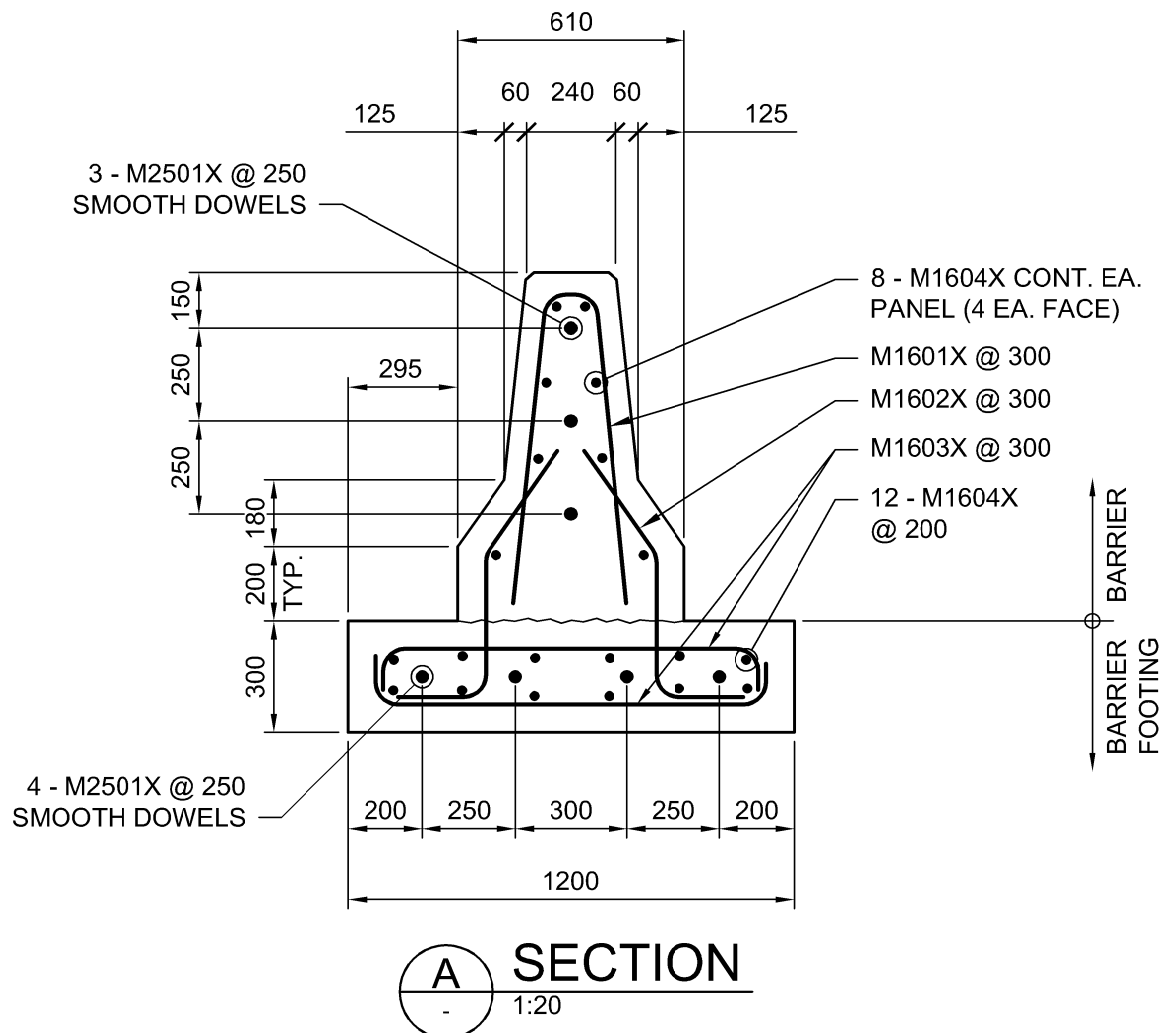
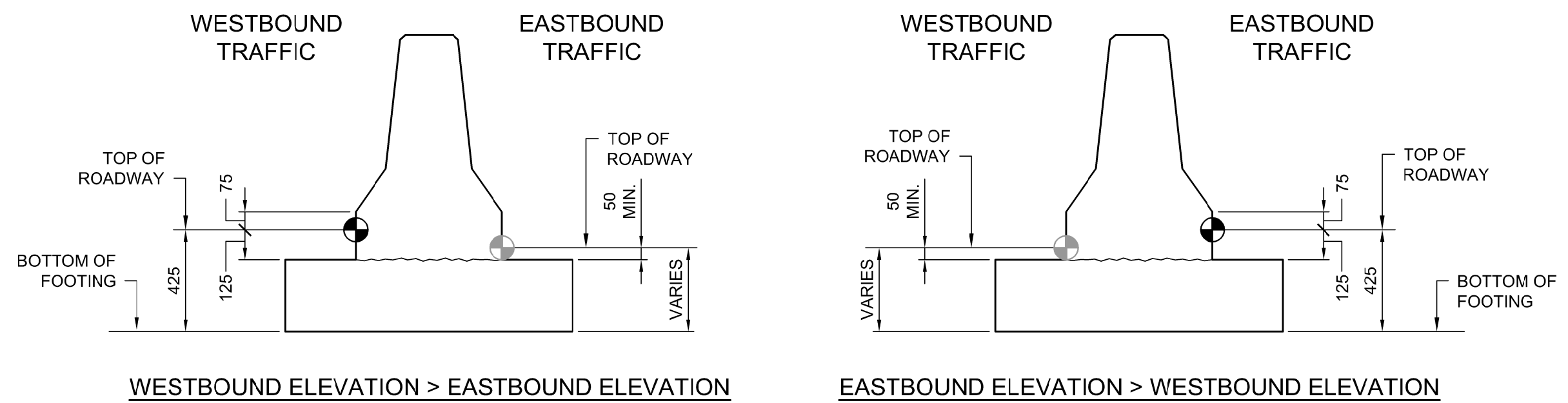


MEDIAN BARRIER ELEVATION
1:100



ROADWAY MEDIAN BARRIERS					
PANEL	STIRRUPS AND TIES			LONGITUDINAL BARS	
TYPE	QTY	M1601X	M1602X	M1603X	DESCRIPTION
'B1M'	83	10	20	20	20 - M1604X
'B2M'	1	11	22	22	20 - M1604X(1)
'B3M'	1	14	28	28	20 - M1604X(2)
'B4M'	1	20	40	40	20 - M1604X(3)
'B5M'	1	18	36	36	20 - M1604X(4)
'B6M'	2	SEE SHEET CS-062 FOR DETAILS			
'B7M'	2	SEE SHEET CS-062 FOR DETAILS			
CONSTRUCTION JOINT DOWELS					
NO. OF JOINTS	REBAR DOWELS EACH JOINT				
89	3 - M2501X SMOOTH DOWELS X 600 LG. IN BARRIER				
8	4 - M2501X SMOOTH DOWELS X 600 LG. IN BARRIER FOOTING				

NOTE: SEE SECTION 'A' FOR THE REBAR ARRANGEMENT LAYOUT



ROAD ELEVATION CONDITIONS AT MEDIAN BARRIER
1:20

NOTES:

- ALL EXPOSED EDGES TO BE CHAMFERED 20 mm UNLESS NOTED OTHERWISE.
- FOR STANDARD JOINT DETAILS, REFER TO SHEET CS-063.
- REFER SHEET No. CT-002 FOR CONTROL LINE GEOMETRY
- REFER TO SHEET CT-053 AND CT-054 FOR TYPICAL ROAD CROSS SECTIONS.

G:\CAD\175932\Drawings\Structural\BRIDGE-CON-CS-ROADWAY-MEDIAN BARRIER DETAILS 1.dwg



DESIGNED BY: DRA		CHECKED BY: SSR	
DRAWN BY: CGC		APPROVED BY: MBL	
HOR. SCALE: AS SHOWN		RELEASED FOR CONSTRUCTION	
VERTICAL: AS SHOWN		DATE: 2018/02/09	
0	ISSUED FOR TENDER	18/02/09	DRA
NO.	REVISIONS	DATE	BY

ENGINEER'S SEAL
PROVINCE OF MANITOBA
D.R.C. AMORIM
Member 33215
REGISTERED PROFESSIONAL ENGINEER
CONSULTANT PROJECT NUMBER
17-5932

THE CITY OF WINNIPEG
PUBLIC WORKS DEPARTMENT
Winnipeg
FERMOR AVENUE BRIDGE OVER SEINE RIVER
BRIDGE RE-HABILITATION, PEDESTRIAN-CYCLIST UNDERPASS STRUCTURE AND ROADWORKS FROM ST. ANNE'S ROAD TO ARCHIBALD STREET
CITY DRAWING NUMBER
U-243-2017-CS-061
SHEET 061 OF 100
CONSULTANT DRAWING NUMBER
CS-061
ROADWAY MEDIAN BARRIER
DETAILS 1 OF 2