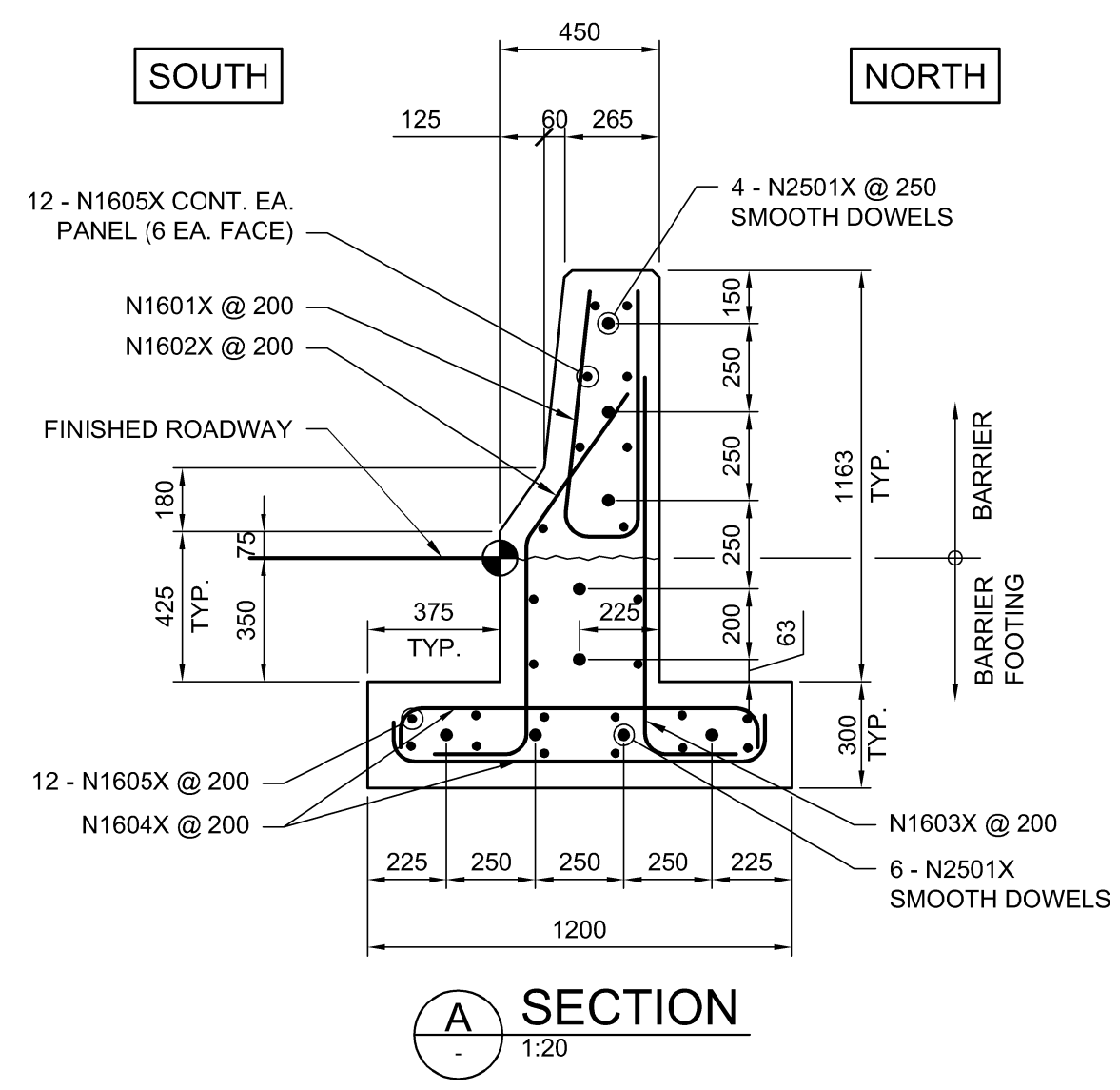


ROADWAY NORTH SHOULDER BARRIER ELEVATION
1:100



| ROADWAY NORTH SHOULDER BARRIERS | | | | | | | |
|---------------------------------|-------------------------------------------------------|-----|------------------------------|--------|--------|--------|-------------------|
| PANEL | TYPE | QTY | STIRRUPS AND TIES | | | | LONGITUDINAL BARS |
| | | | N1601X | N1602X | N1603X | N1604X | |
| 'B1N' | | 28 | 15 | 15 | 15 | 30 | 24 - N1605X(1) |
| 'B2N' | | 1 | 16 | 16 | 16 | 32 | 24 - N1605X(2) |
| 'B3N' | | 1 | 24 | 24 | 24 | 48 | 24 - N1605X(3) |
| 'B4N' | | 1 | 17 | 17 | 17 | 34 | 24 - N1605X(4) |
| 'B5N' | | 1 | SEE SHEET CS-062 FOR DETAILS | | | | |
| 'B6N' | | 2 | SEE SHEET CS-062 FOR DETAILS | | | | |
| CONSTRUCTION JOINT DOWELS | | | | | | | |
| NO. OF JOINTS | REBAR DOWELS EACH JOINT | | | | | | |
| 32 | 3 - N2501X SMOOTH DOWELS X 600 LG. IN BARRIER | | | | | | |
| 4 | 6 - N2501X SMOOTH DOWELS X 600 LG. IN BARRIER FOOTING | | | | | | |

NOTE: SEE SECTION 'A' FOR THE REBAR ARRANGEMENT LAYOUT

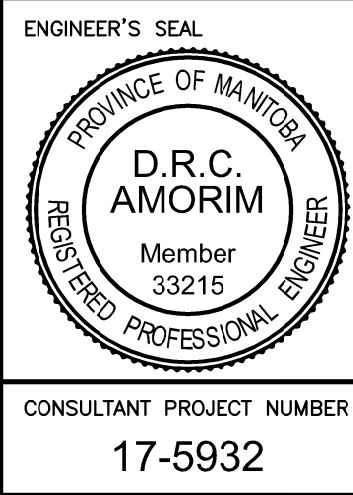
| BILL OF MISCELLANEOUS METAL FOR ROADWAY NORTH SHOULDER BARRIERS | | | | |
|--------------------------------------------------------------------|-----|----------------------------------------------------------------------------------------------|------------------------|------------|
| MARK | QTY | DESCRIPTION | UNIT MASS | TOTAL MASS |
| Y1 | 5 | 19 DIA. F-57 DAYTON SUPERIOR STAINLESS STEEL EXPANDED COIL FERRULE INSERT C/W 1 PLATE WASHER | 0.38 | 1.90 |
| | | | TOTAL MASS (kg) = 1.90 | |

- NOTES:**
- ALL EXPOSED EDGES TO BE CHAMFERED 20 mm UNLESS NOTED OTHERWISE.
 - FOR STANDARD JOINT DETAILS, REFER TO SHEET CS-063.
 - REFER SHEET No. CT-002 FOR CONTROL LINE GEOMETRY
 - REFER TO SHEET CT-053 AND CT-054 FOR TYPICAL ROAD CROSS SECTIONS.

G:\CAD\175932\Drawings\Structural\BRIDGE\CON-CO-ROADWAY NORTH SHOULDER BARRIER DETAILS 1.dwg



| | | | |
|----------------------|-------------------|---------------------------|-----|
| DESIGNED BY: DRA | | CHECKED BY: SSR | |
| DRAWN BY: CGC | | APPROVED BY: MBL | |
| HOR. SCALE: AS SHOWN | | RELEASED FOR CONSTRUCTION | |
| VERTICAL: AS SHOWN | | | |
| 0 | ISSUED FOR TENDER | 18/02/09 | DRA |
| NO. | REVISIONS | DATE | BY |
| | | 2018/02/09 | |



| | | | |
|-------------------------------------------------------------------------------------------------------------------------------------------------------------------|--|---------------------------------------------------------|--|
| | | | |
| FERMOR AVENUE BRIDGE OVER SEINE RIVER BRIDGE RE-HABILITATION, PEDESTRIAN-CYCLIST UNDERPASS STRUCTURE AND ROADWORKS FROM ST. ANNE'S ROAD TO ARCHIBALD STREET | | CITY DRAWING NUMBER U-243-2017-CS-059 | |
| ROADWAY NORTH SHOULDER BARRIER DETAILS 1 OF 2 | | SHEET 059 OF 100 CONSULTANT DRAWING NUMBER CS-059 | |