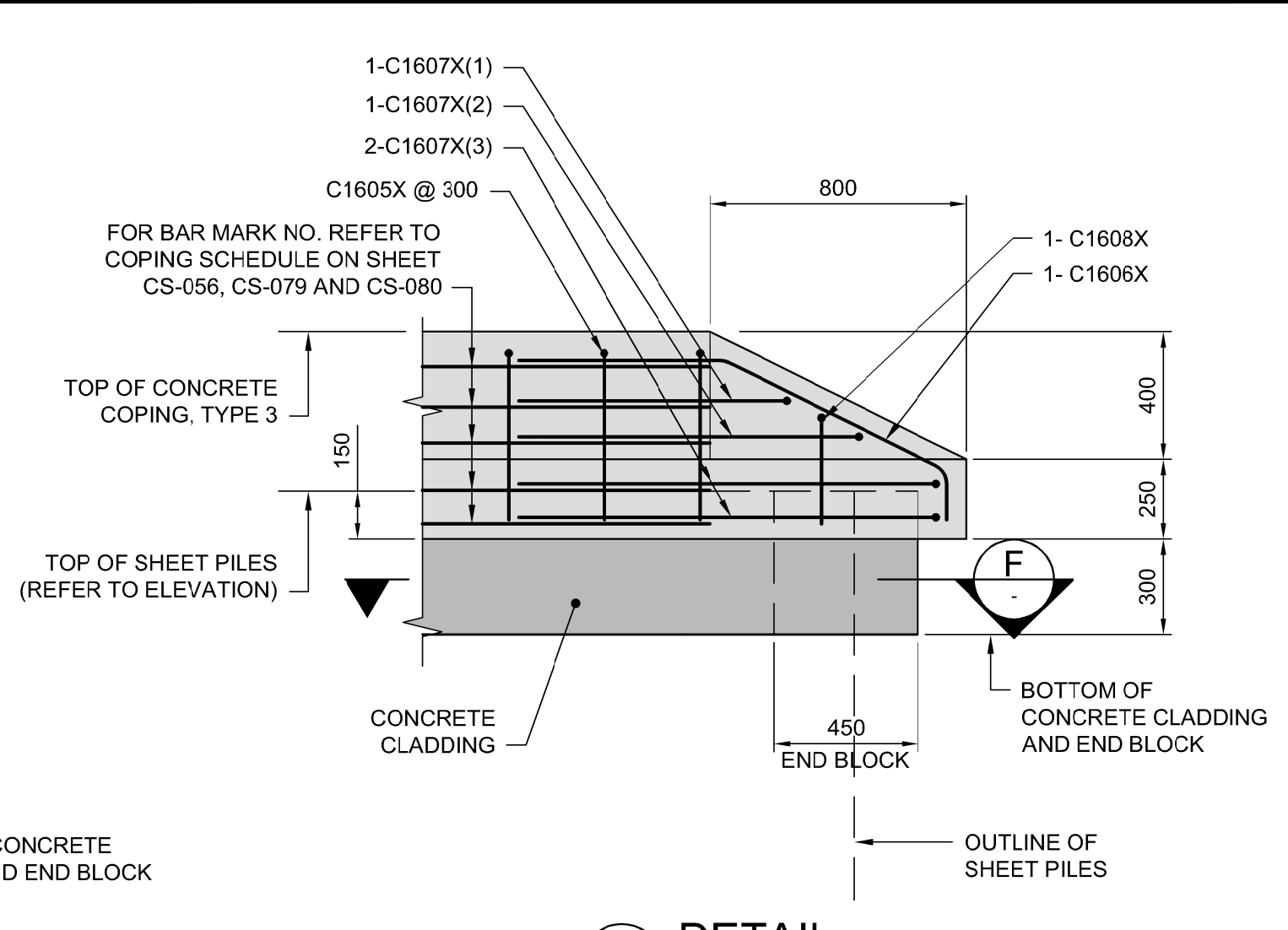
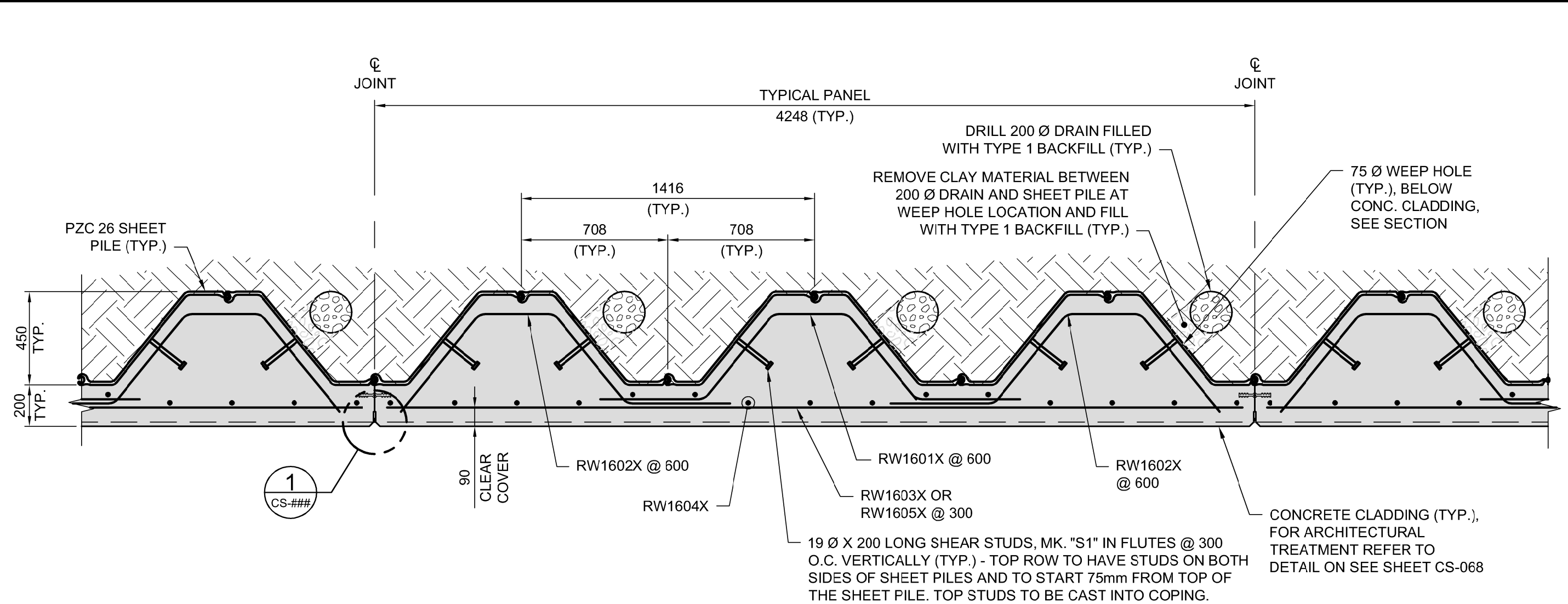


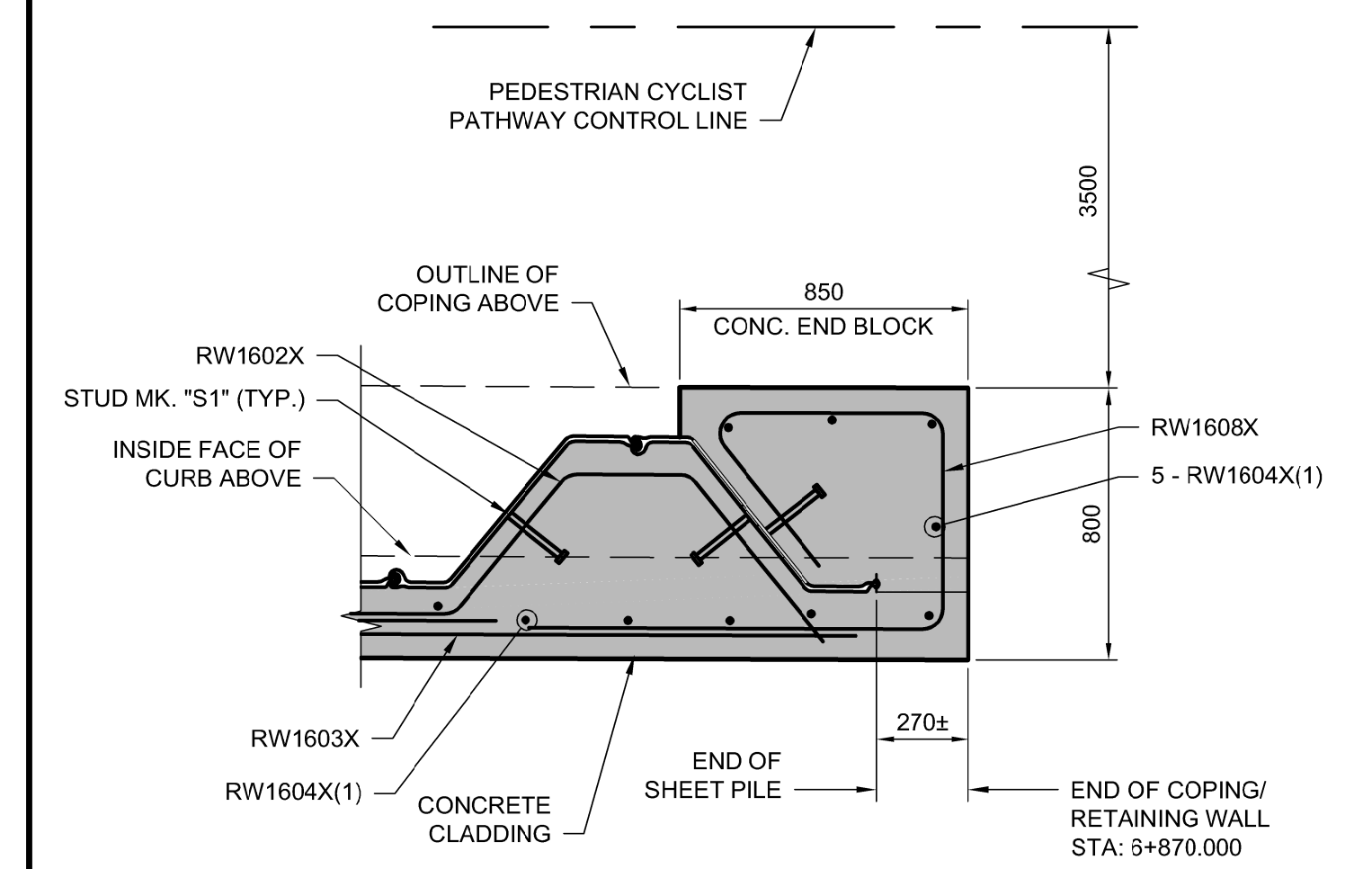
6 DETAIL
CS-051 1:20



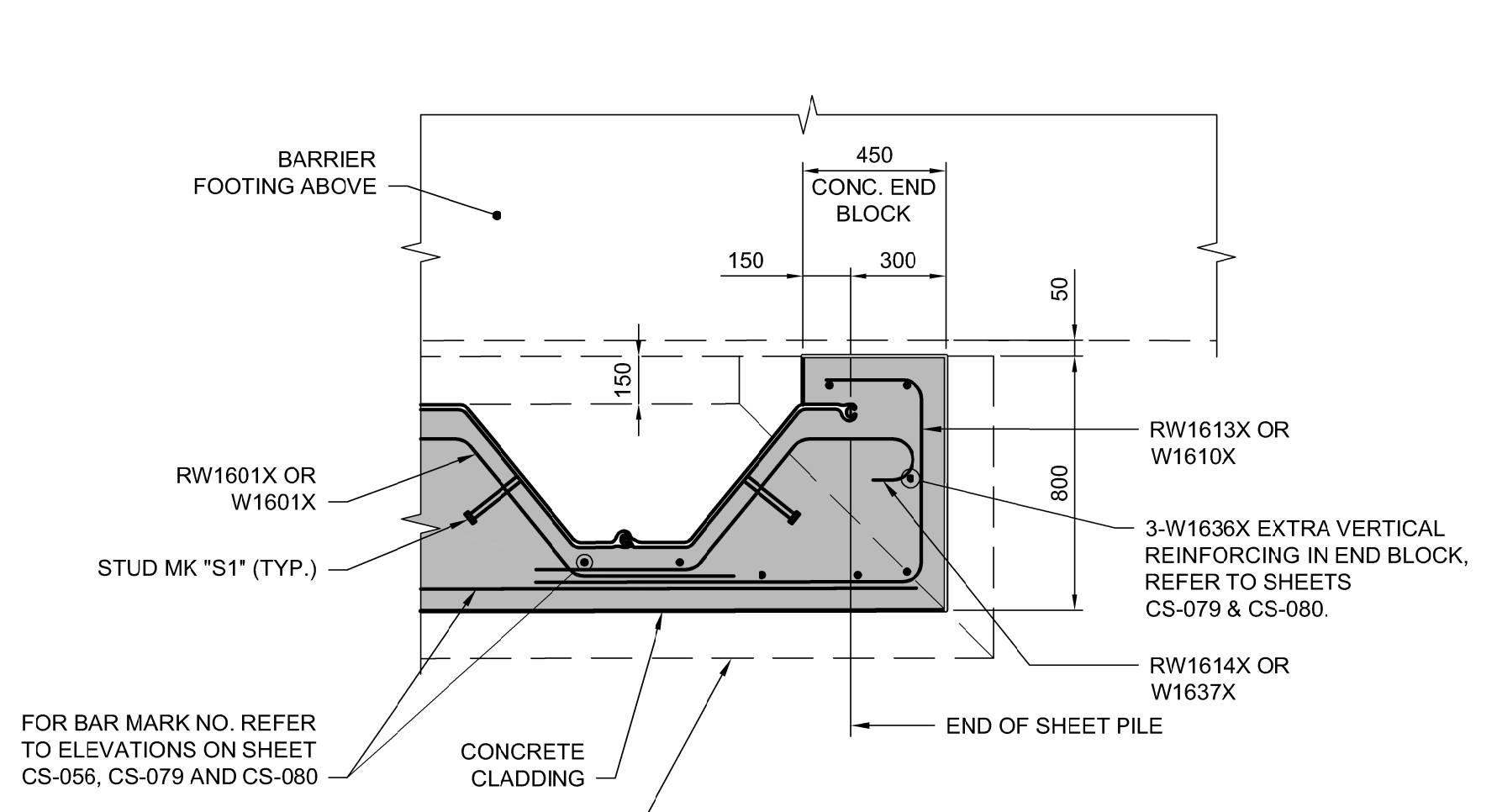
7 DETAIL
CS-052, 053 CS-068 1:20



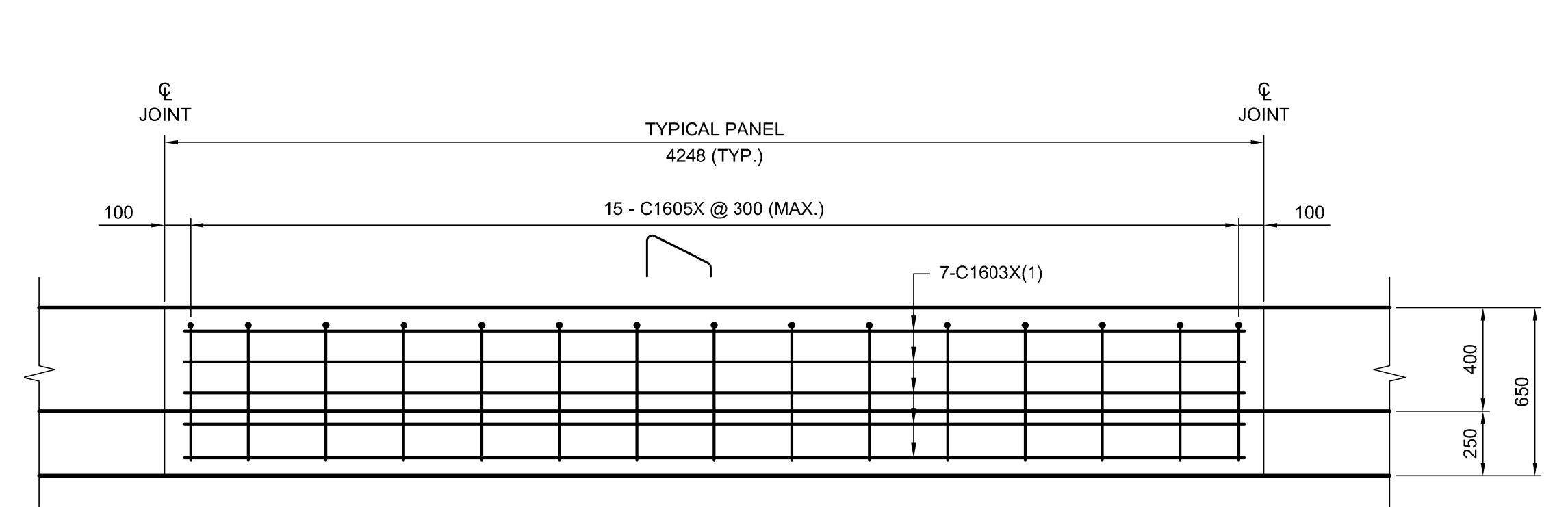
TYPICAL SECTION OF RETAINING WALL CLADDING AND DRAINAGE
1:20



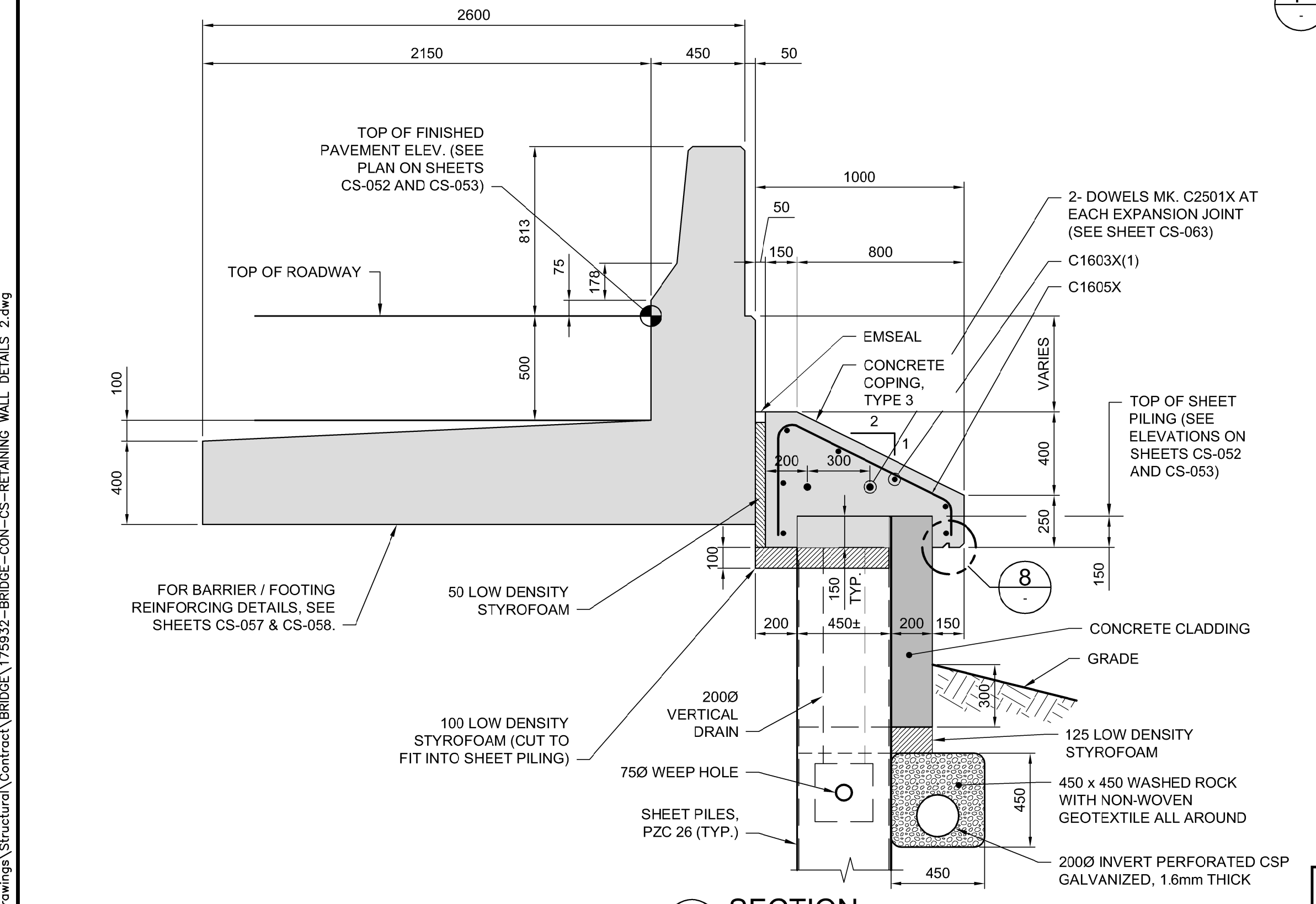
E SECTION
1:20



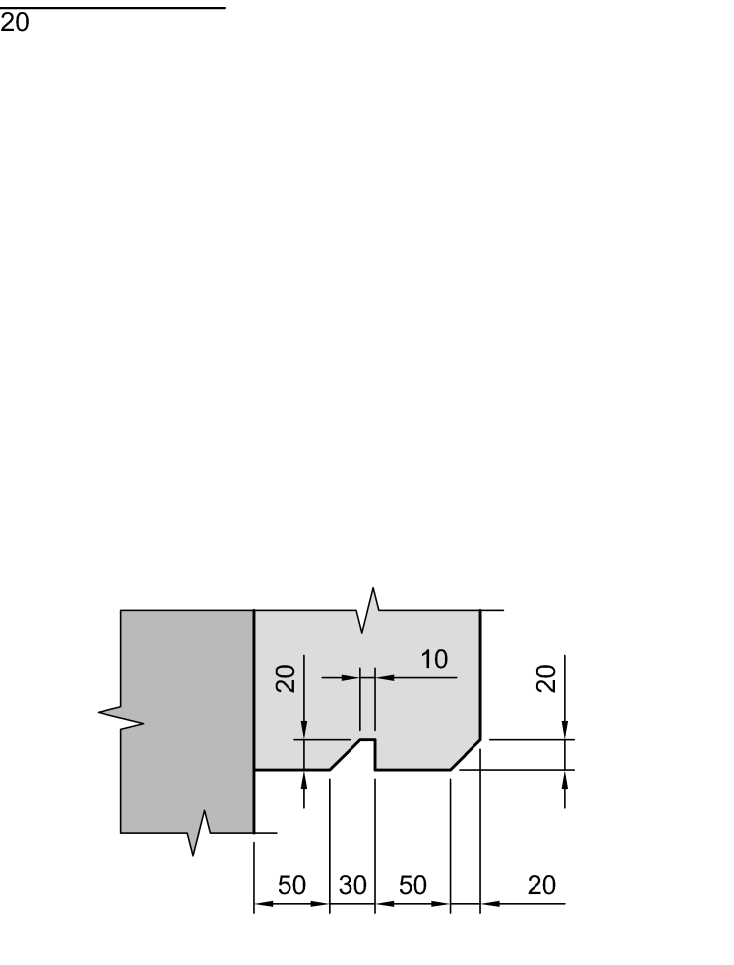
F SECTION
1:20



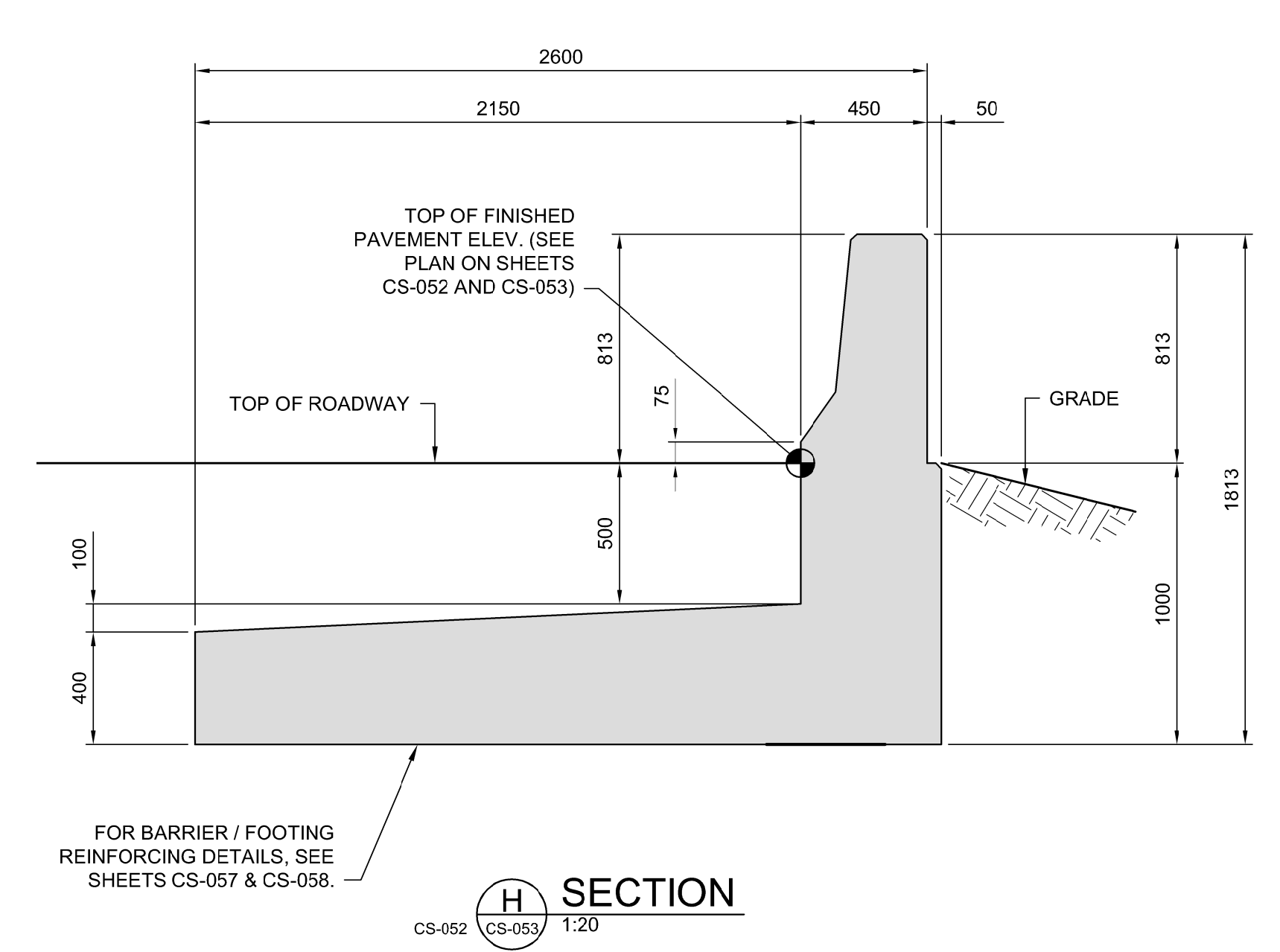
TYPICAL ELEVATION OF COPING REINFORCEMENT
1:20
COPING TYPE 3 SHOWN
COPING TYPE 1 LAYOUT SIMILAR



G SECTION
CS-052 CS-053 1:20
RETAINING WALL WITH TYPE 3 CONCRETE COPING



8 COPING DRIP DETAIL
1:5



H SECTION
CS-052 CS-053 1:20

- NOTES:**
- REFER TO SHEET CS-063 FOR STANDARD JOINT DETAILS.
 - ALL EXPOSED EDGES TO BE CHAMFERED 20 mm UNLESS NOTED OTHERWISE.

G:\CAD\175932\Drawings\Structural\BRIDGE-CON-CS-RETAINING WALL DETAILS 2.dwg



		DESIGNED BY	DRA	CHECKED BY	SSR
		DRAWN BY	CGC	APPROVED BY	MBL
HOR. SCALE		AS SHOWN		RELEASED FOR CONSTRUCTION	
VERTICAL SCALE		AS SHOWN		DATE	
NO. REVISIONS		DATE	BY	DATE	DATE
0	ISSUED FOR TENDER	18/02/09	DRA		
				2018/02/09	

ENGINEER'S SEAL

 CONSULTANT PROJECT NUMBER
17-5932

THE CITY OF WINNIPEG
 PUBLIC WORKS DEPARTMENT
Winnipeg
FERMOR AVENUE BRIDGE OVER SEINE RIVER
 BRIDGE RE-HABILITATION, PEDESTRIAN-CYCLIST UNDERPASS STRUCTURE AND ROADWORKS FROM ST. ANNE'S ROAD TO ARCHIBALD STREET
 CITY DRAWING NUMBER
 U-243-2017-CS-055
 SHEET **055** OF **100**
 CONSULTANT DRAWING NUMBER
CS-055
 RETAINING WALL DETAILS 2 OF 3