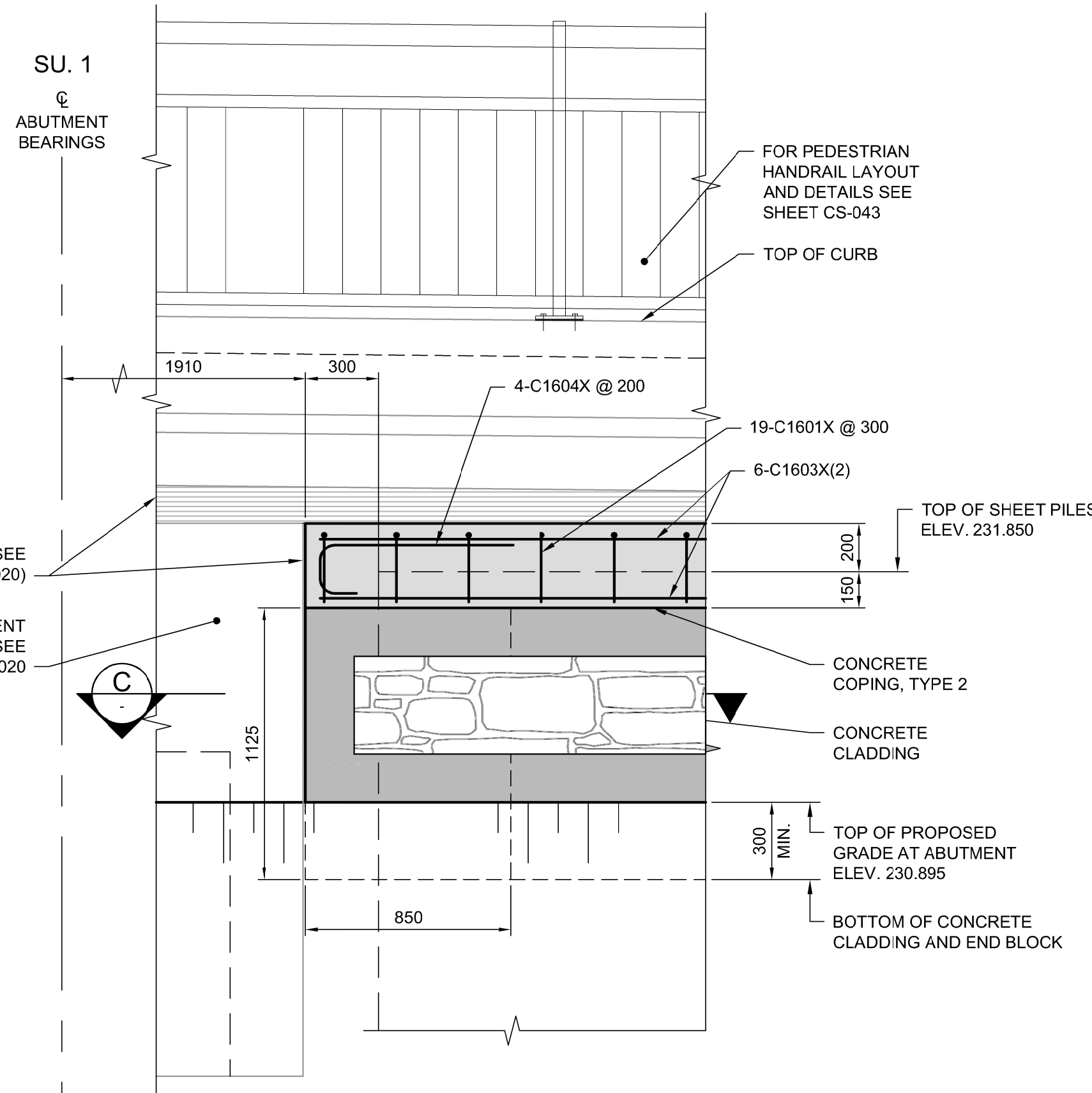
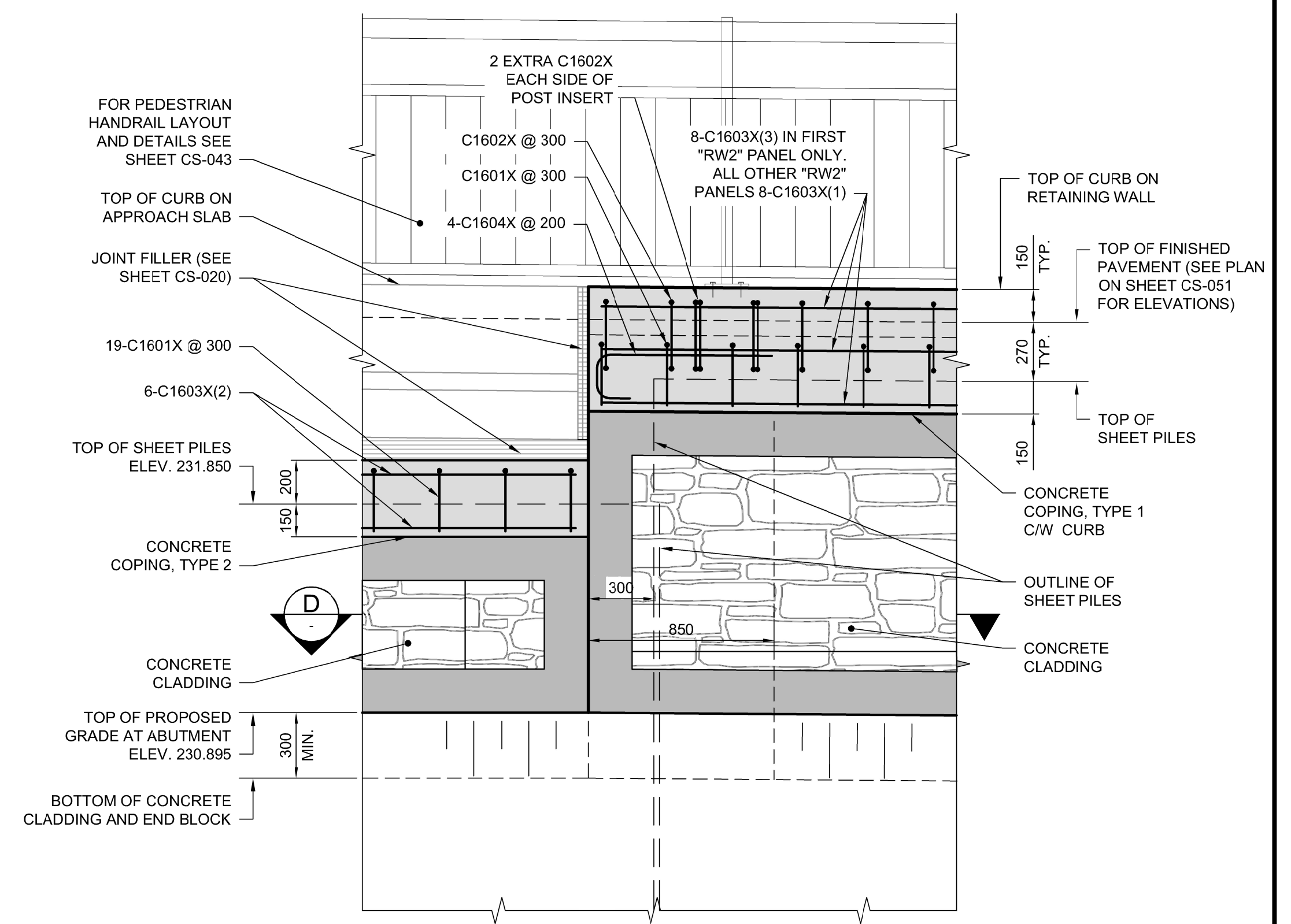


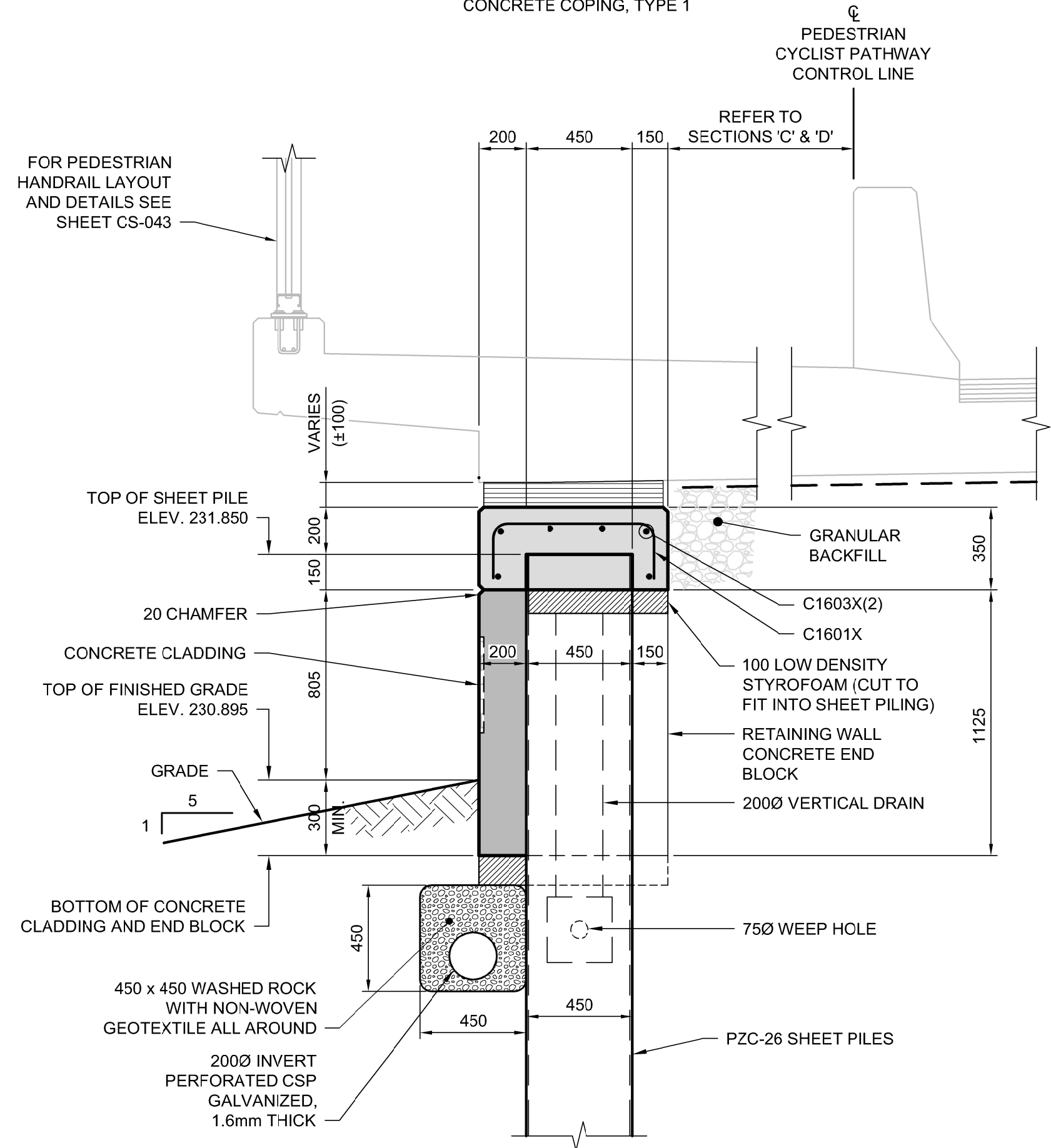
**A** SECTION  
1:20  
CONCRETE COPING, TYPE 1



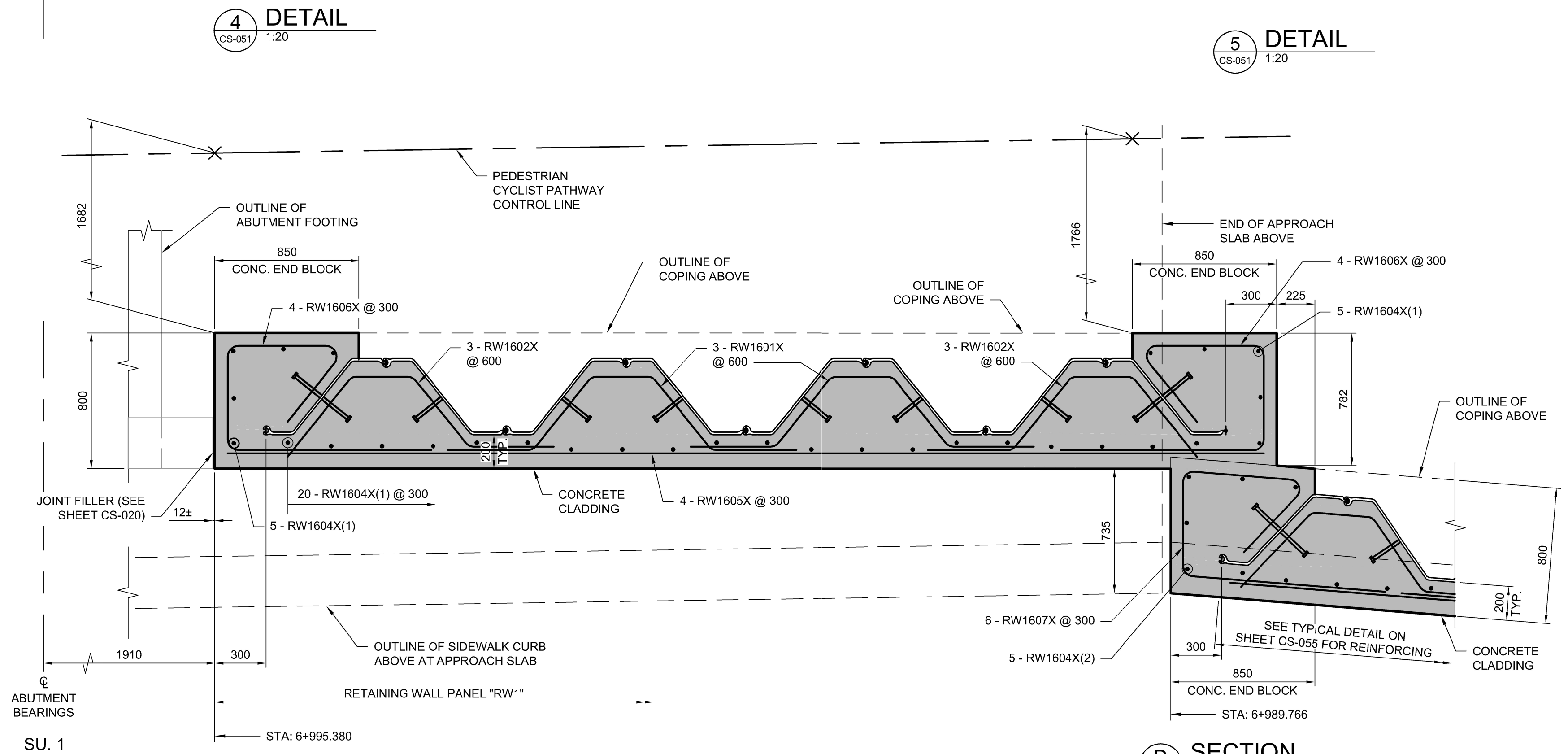
**4** DETAIL  
1:20



**5** DETAIL  
1:20



**B** SECTION  
1:20  
CONCRETE COPING, TYPE 2



**C** SECTION  
1:20

**NOTES:**

1. REFER TO SHEET CS-063 FOR STANDARD JOINT DETAILS.
2. ALL EXPOSED EDGES TO BE CHAMFERED 20 mm UNLESS NOTED OTHERWISE.
3. SEE SHEET CS-001 FOR RETAINING WALL CONSTRUCTION TOLERANCES.

**APEGM**  
Certificate of Authorization  
**Dillon Consulting Limited (MB)**  
No. 1789 Date: 2018/02/09

				<b>FERMOR AVENUE BRIDGE OVER SEINE RIVER</b> BRIDGE REHABILITATION, PEDESTRIAN-CYCLIST UNDERPASS STRUCTURE AND ROADWORKS FROM ST. ANNE'S ROAD TO ARCHIBALD STREET		CITY DRAWING NUMBER U-243-2017-CS-054
		CONSULTANT PROJECT NUMBER 17-5932		<b>RETAINING WALL DETAILS 1 OF 3</b>		SHEET OF 054 OF 100 CONSULTANT DRAWING NUMBER CS-054
DESIGNED BY: DRA DRAWN BY: CGC	CHECKED BY: SSR APPROVED BY: MBL	HOR. SCALE: AS SHOWN VERTICAL: AS SHOWN	RELEASED FOR CONSTRUCTION DATE: 2018/02/09	NO. REVISIONS: 0 DATE: 18/02/09 BY: DRA		CONSULTANT DRAWING NUMBER CS-054