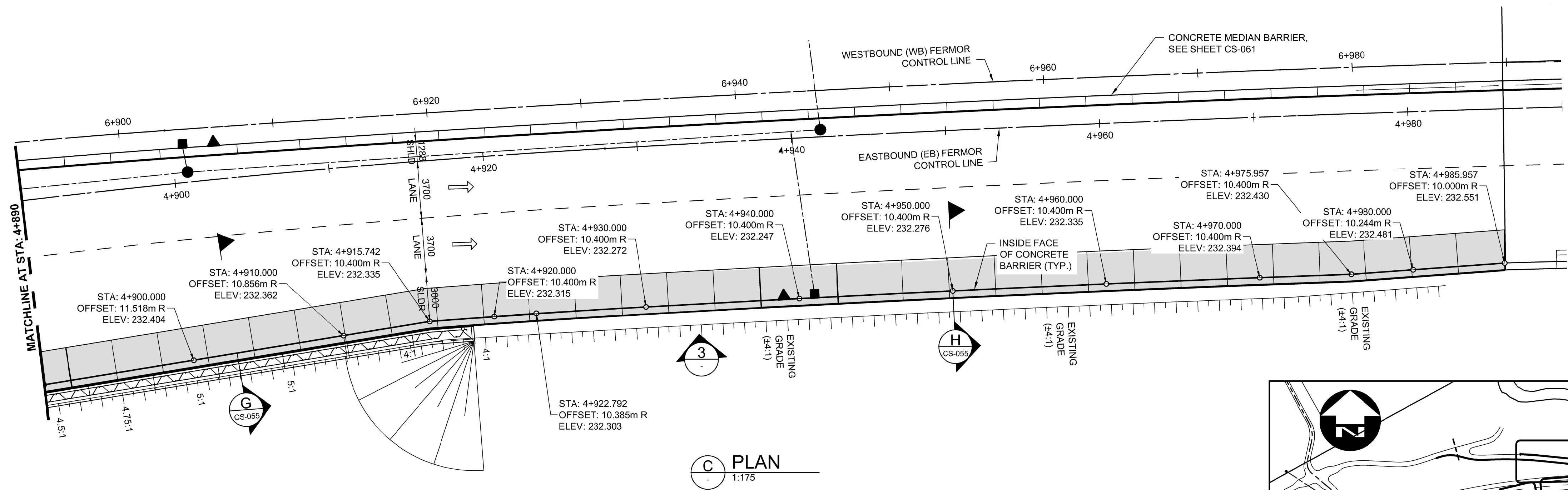
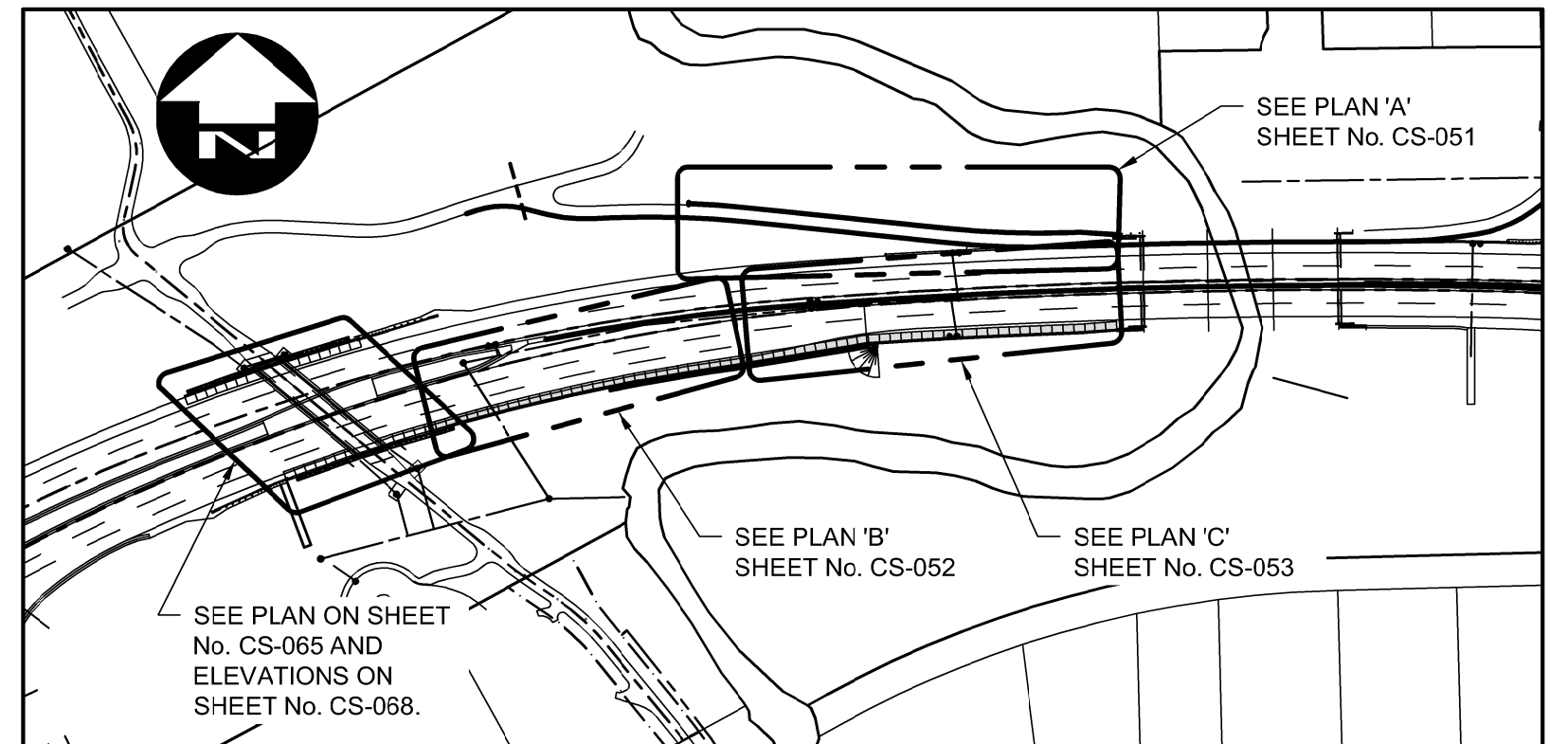


NOTES:

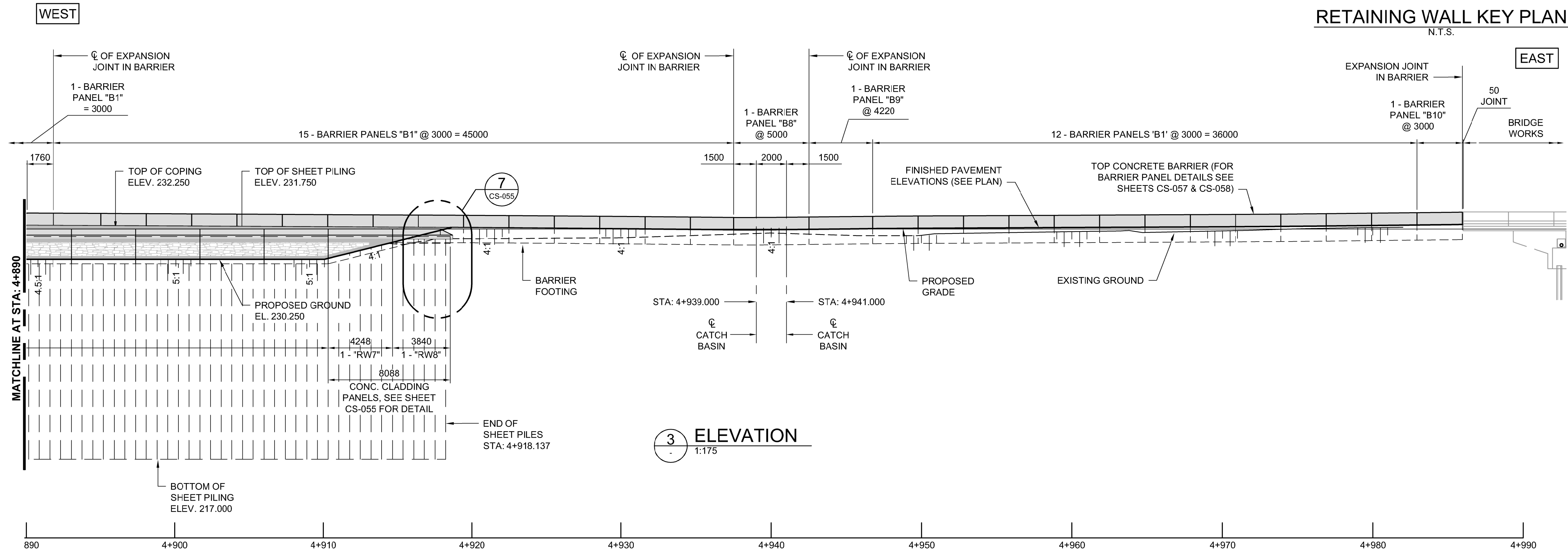
1. REFER TO SHEET No. CT-002 FOR CONTROL LINE GEOMETRY.
2. REFER TO SHEET Nos. CT-053 AND CT-054 FOR TYPICAL ROAD CROSS SECTIONS.



C PLAN
1:175



RETAINING WALL KEY PLAN
N.T.S.



3 ELEVATION
1:175

G:\CAD\175932\Drawings\Structural\Contract\BRIDGE-CON-CS-RETAINING WALL LAYOUT 3.dwg



DESIGNED BY	DRA	CHECKED BY	SSR
DRAWN BY	CGC	APPROVED BY	MBL
HOR. SCALE	AS SHOWN	RELEASED FOR CONSTRUCTION	
VERTICAL	AS SHOWN		
ISSUED FOR TENDER	18/02/09	DATE	2018/02/09
NO. REVISIONS	DATE	BY	DATE

ENGINEER'S SEAL
PROVINCE OF MANITOBA
D.R.C. AMORIM
Member
33215
REGISTERED PROFESSIONAL ENGINEER
CONSULTANT PROJECT NUMBER
17-5932

THE CITY OF WINNIPEG
PUBLIC WORKS DEPARTMENT
Winnipeg
FERMOR AVENUE BRIDGE OVER SEINE RIVER
BRIDGE RE-HABILITATION, PEDESTRIAN-CYCLIST UNDERPASS STRUCTURE AND ROADWORKS FROM ST. ANNE'S ROAD TO ARCHIBALD STREET
CITY DRAWING NUMBER
U-243-2017-CS-053
SHEET **053** OF **100**
CONSULTANT DRAWING NUMBER
CS-053
RETAINING WALL LAYOUT
EASTBOUND 2 OF 2