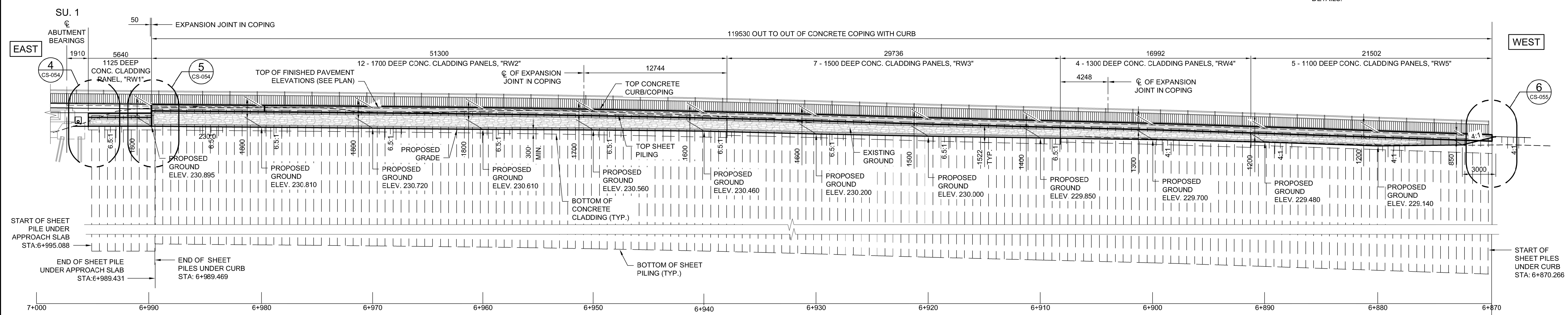


- NOTES:**
1. REFER SHEET No. CT-002 & CT-006 FOR CONTROL LINE GEOMETRY
 2. REFER TO SHEET Nos. CT-053 AND CT-054 FOR TYPICAL ROAD CROSS SECTIONS.
 3. SEE SHEET No. CS-047 & CS-048 FOR SLOPE PROTECTION DETAILS.



1 ELEVATION
1:175



		DESIGNED BY	DRA	CHECKED BY	SSR
		DRAWN BY	CGC	APPROVED BY	MBL
HOR. SCALE		AS SHOWN		RELEASED FOR CONSTRUCTION	
VERTICAL		AS SHOWN		DATE	
NO. REVISIONS		DATE	BY	DATE	DATE
0	ISSUED FOR TENDER	18/02/09	DRA		

ENGINEER'S SEAL
 PROVINCE OF MANITOBA

 REGISTERED PROFESSIONAL ENGINEER
 CONSULTANT PROJECT NUMBER
 17-5932

THE CITY OF WINNIPEG
 PUBLIC WORKS DEPARTMENT

FERMOR AVENUE BRIDGE OVER SEINE RIVER
 BRIDGE RE-HABILITATION, PEDESTRIAN-CYCLIST UNDERPASS STRUCTURE AND ROADWORKS FROM ST. ANNE'S ROAD TO ARCHIBALD STREET
 CITY DRAWING NUMBER U-243-2017-CS-051
 SHEET 051 OF 100
 CONSULTANT DRAWING NUMBER CS-051
RETAINING WALL LAYOUT WESTBOUND

G:\CAD\175932\Drawings\Structural\BRIDGE-CON-CS-RETAINING WALL LAYOUT 1.dwg