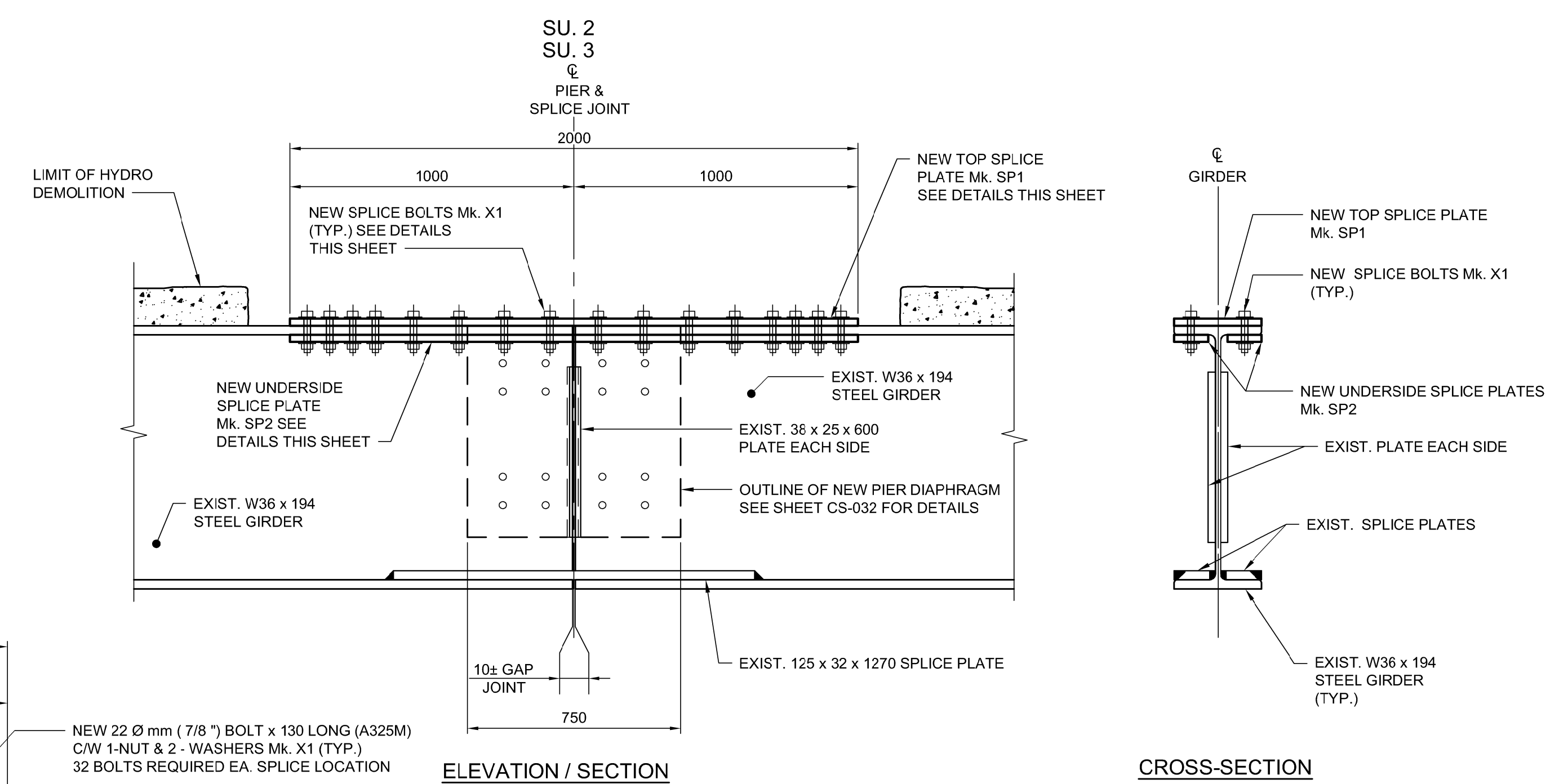
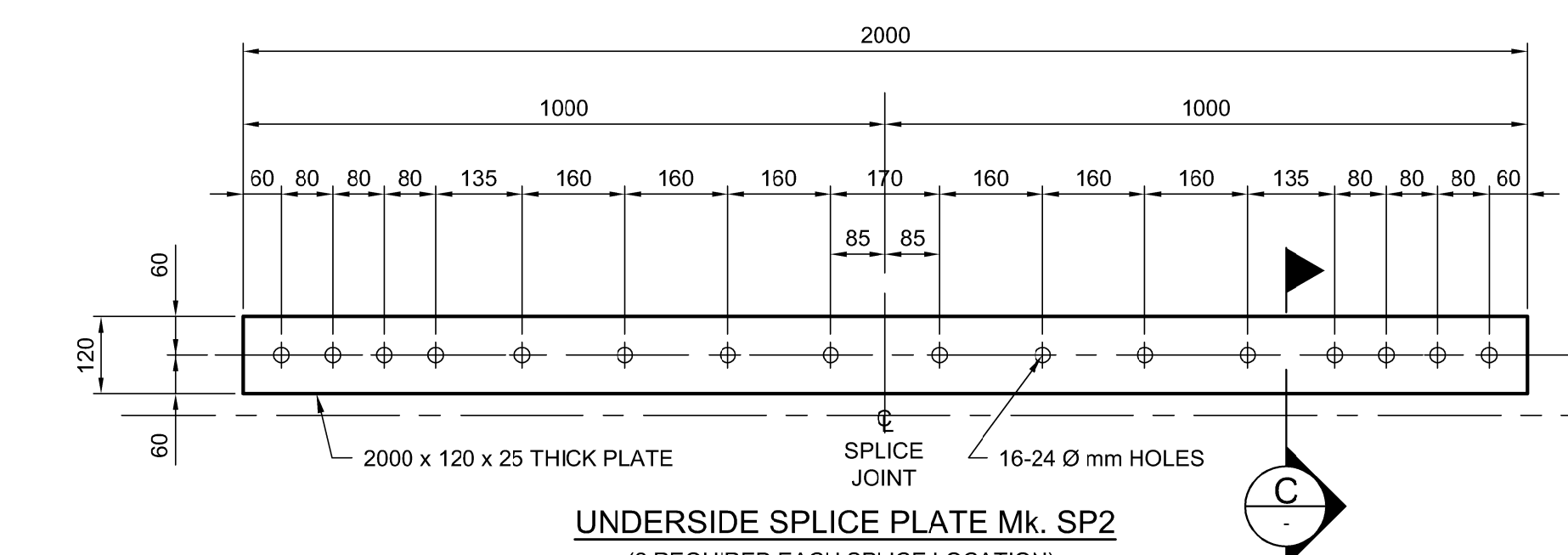
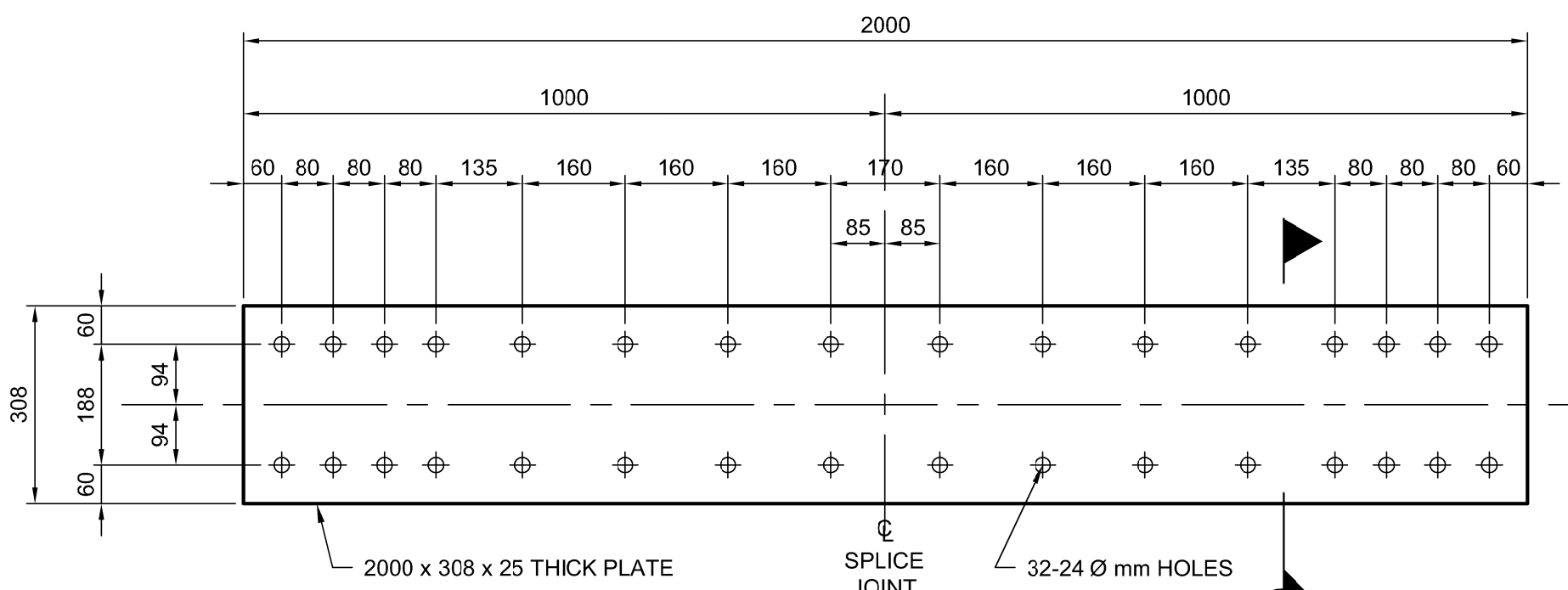


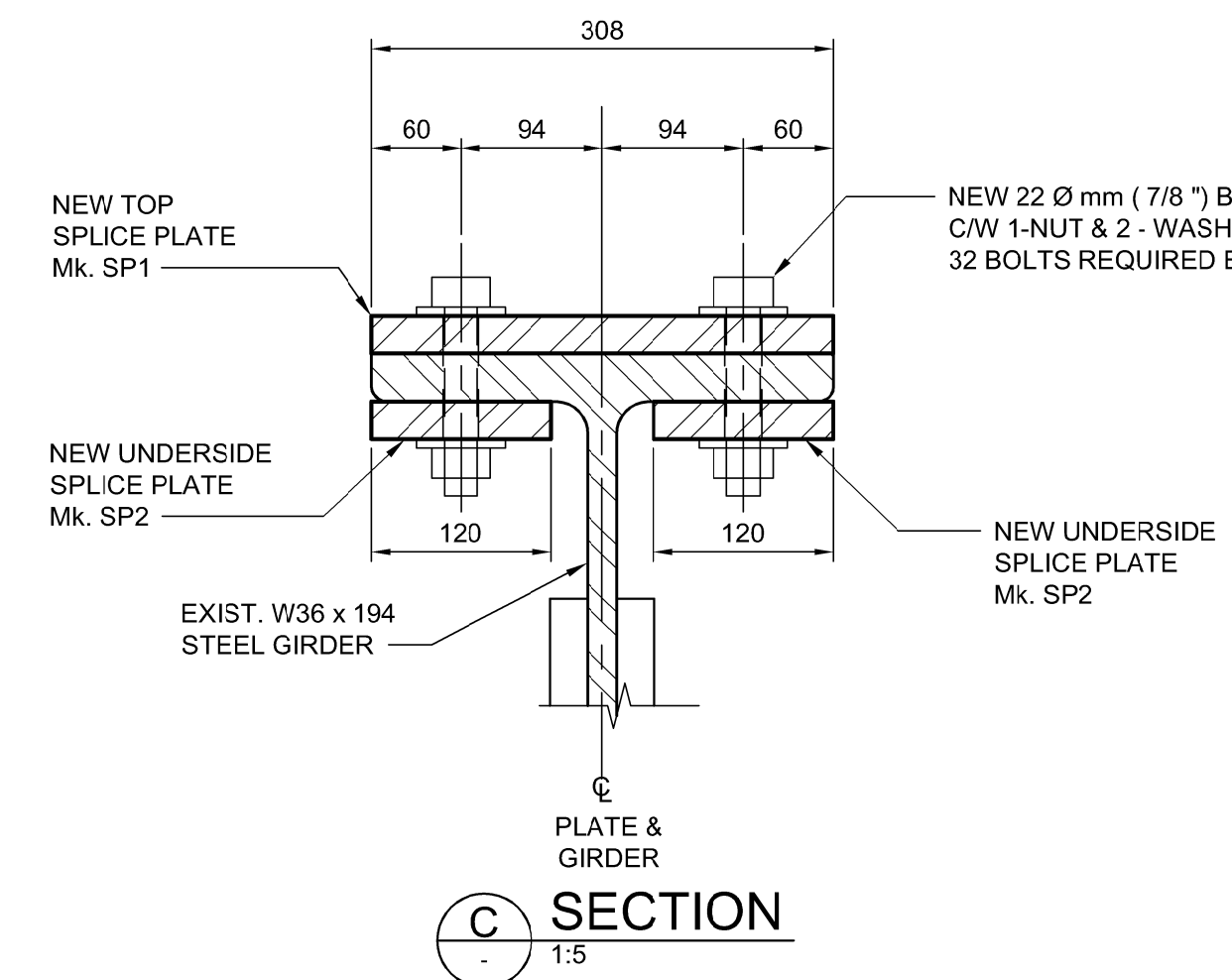
A GIRDER SPLICE JOINT AT PIER LOCATIONS
1:15
SHOWING EXISTING SPLICE PLATES



A GIRDER SPLICE JOINT AT PIER LOCATIONS
1:15
SHOWING PROPOSED TOP SPLICE PLATES REPLACEMENT



GIRDER TOP FLANGE SPLICE PLATE DETAILS
1:10



BILL OF MISCELLANEOUS METAL FOR SPLICE JOINT				
MARK	No.	DESCRIPTION	COMPONENT MASS	TOTAL MASS
SP1	14	SPLICE PLATE - 2000 x 308 x 25 THICK (AS DETAILED)	120.89	1 692.46
SP2	28	SPLICE PLATE - 2000 x 120 x 25 THICK (AS DETAILED)	47.10	1 318.80
X1	448	BOLTS - 22 DIA. (7/8") x 130 LONG (A325M) C/W 1-NUT & 2-WASHERS	0.816	365.57
			TOTAL MASS (kg) = 3 376.83	

APEGM
Certificate of Authorization
Dillon Consulting Limited (MB)
No. 1789 Date: 2018/02/09

DESIGNED BY		CHECKED BY	
MS	SSR		
DRAWN BY		APPROVED BY	
NBG	MBL		
HOR. SCALE		RELEASED FOR CONSTRUCTION	
AS SHOWN			
VERTICAL		DATE	
AS SHOWN		2018/02/09	
NO. REVISIONS		DATE	
0	ISSUED FOR TENDER	18/02/09	DRA

ENGINEER'S SEAL
PROVINCE OF MANITOBA
D.R.C. AMORIM
Member 33215
REGISTERED PROFESSIONAL ENGINEER

THE CITY OF WINNIPEG
PUBLIC WORKS DEPARTMENT

Winnipeg

FERMOR AVENUE BRIDGE OVER SEINE RIVER
BRIDGE RE-HABILITATION, PEDESTRIAN-CYCLIST UNDERPASS STRUCTURE AND ROADWORKS FROM ST. ANNE'S ROAD TO ARCHIBALD STREET

CITY DRAWING NUMBER: B-118-2017-CS-030
SHEET 030 OF 100
CONSULTANT DRAWING NUMBER: CS-030

EXISTING STEEL GIRDER STRENGTHENING DETAILS

CONSULTANT PROJECT NUMBER: 17-5932

G:\CAD\175932\Drawings\Structural\Bridges\CON-CS-EXISTING BRIDGE STEEL GIRDER STRENGTH.dwg