

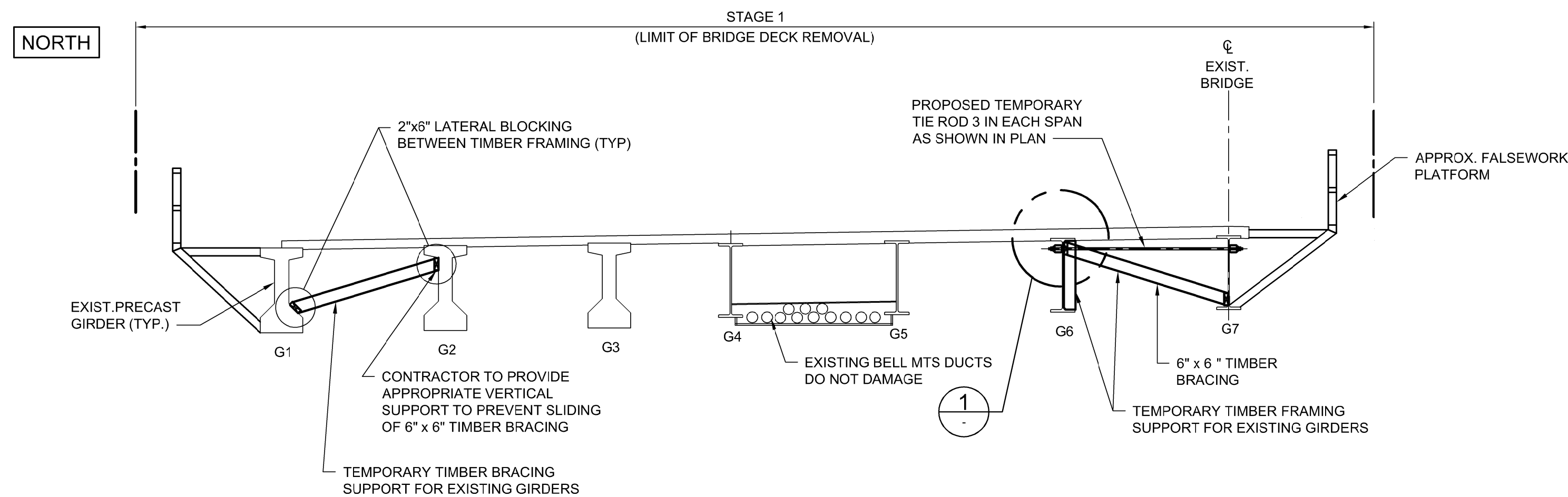
54 SPACES @ 1000 = 54000  
SPACING FOR EXTERNAL TIMBER FRAMING, INTERNAL TIMBER FRAMING & FALSEWORK PLATFORM

**PLAN**

1:150  
STAGE 1 SHOWN, STAGE 2 SIMILAR

**NOTES:**

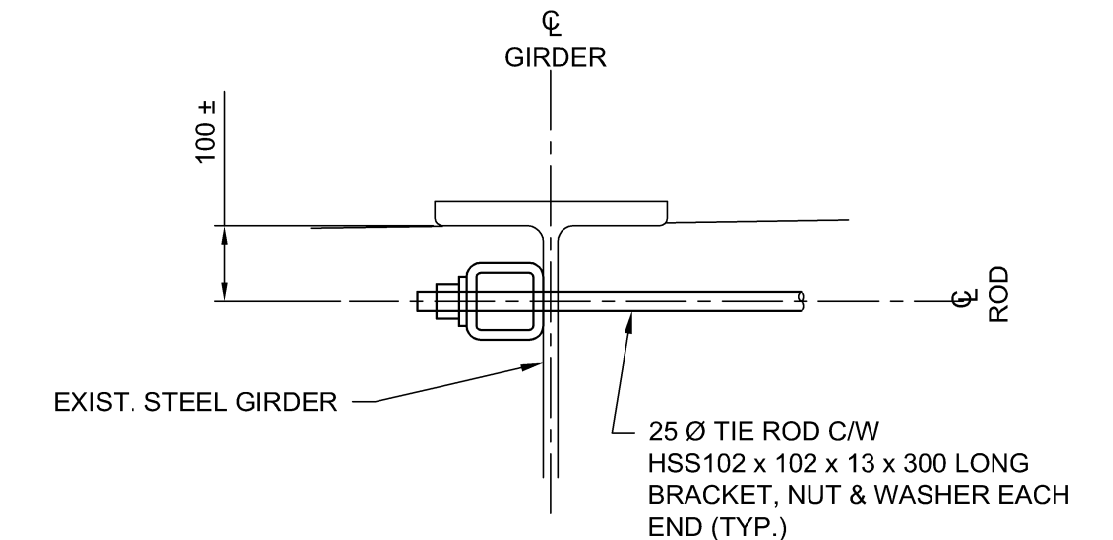
1. THIS DRAWING SHALL BE READ IN CONJUNCTION WITH CS-028.
2. THIS DRAWING PROVIDES AN ACCEPTABLE TEMPORARY FRAMING PLAN WHICH IS REQUIRED TO UTILIZE THE SPECIFIED TEMPORARY LOADING CAPACITIES PROVIDED ON CS-028.
3. THE CONTRACTOR SHALL BE RESPONSIBLE FOR THE DESIGN AND SELECTION OF ALL SCREED RAILS, TEMPORARY OVERHANGS/PLATFORMS, MOVEABLE DECK ENCLOSURES AND ANY OTHER TEMPORARY ITEMS (EXCEPT THOSE SHOWN ON THIS DRAWING) SUBJECT TO THE LOADING CONDITIONS PROVIDED ON SHEET CS-028.
4. THE CONTRACTOR MAY PROPOSE AN ALTERNATE TEMPORARY SUPPORT DESIGN TO THE CONTRACT ADMINISTRATOR FOR CONSIDERATION.
5. THE EXISTING GIRDERS SHALL BE TEMPORARILY SUPPORTED (AS SHOWN) PRIOR TO THE INSTALLATION OF ANY TEMPORARY PLATFORMS/OVERHANGS, ETC. UNLESS AN ALTERNATIVE SUPPORT DESIGN HAS BEEN SUBMITTED BY THE CONTRACTOR AND APPROVED BY THE CONTRACT ADMINISTRATOR.
6. THE CONTRACTOR SHALL PERIODICALLY INSPECT THE TIMBER FRAMING TO ENSURE ALL SUPPORTS ARE FIRMLY IN PLACE.
7. THE TEMPORARY TIMBER FRAMES SHALL NOT BE REMOVED UNTIL THE NEW DECK/OVERHANGS HAVE BEEN CAST AND ACHIEVED A MINIMUM 25 MPa STRENGTH FOR EACH RESPECTIVE STAGE.



**SECTION**

1:50  
STAGE 1 SHOWN, STAGE 2 SIMILAR

NOTE: ALL TIMBER FRAMING TO BE SPF NO. 2 (TYP. U/N) OR BETTER



**DETAIL**

1:10

G:\CAD\175932\Drawings\Structural\Contract\BRIDGE\175932-BRIDGE-CON-CS-GIRDER-TEMP-SUPPORT.dwg



DESIGNED BY	MS	CHECKED BY	SSR
DRAWN BY	NBG	APPROVED BY	MBL
HOR. SCALE	AS SHOWN	RELEASED FOR CONSTRUCTION	
VERTICAL SCALE	AS SHOWN		
ISSUED FOR TENDER	18/02/09	DRA	
NO. REVISIONS	DATE	BY	DATE
	2018/02/09		

ENGINEER'S SEAL  
PROVINCE OF MANITOBA  
**D.R.C. AMORIM**  
Member  
33215  
REGISTERED PROFESSIONAL ENGINEER  
CONSULTANT PROJECT NUMBER  
**17-5932**

**THE CITY OF WINNIPEG**  
PUBLIC WORKS DEPARTMENT  
**Winnipeg**  
**FERMOR AVENUE BRIDGE OVER SEINE RIVER**  
BRIDGE RE-HABILITATION, PEDESTRIAN-CYCLIST UNDERPASS STRUCTURE AND ROADWORKS FROM ST. ANNE'S ROAD TO ARCHIBALD STREET  
CITY DRAWING NUMBER  
B-118-2017-CS-026  
SHEET  
026 OF 100  
CONSULTANT DRAWING NUMBER  
CS - 026  
**TEMPORARY FRAMING SUPPORT FOR EXISTING GIRDERS**