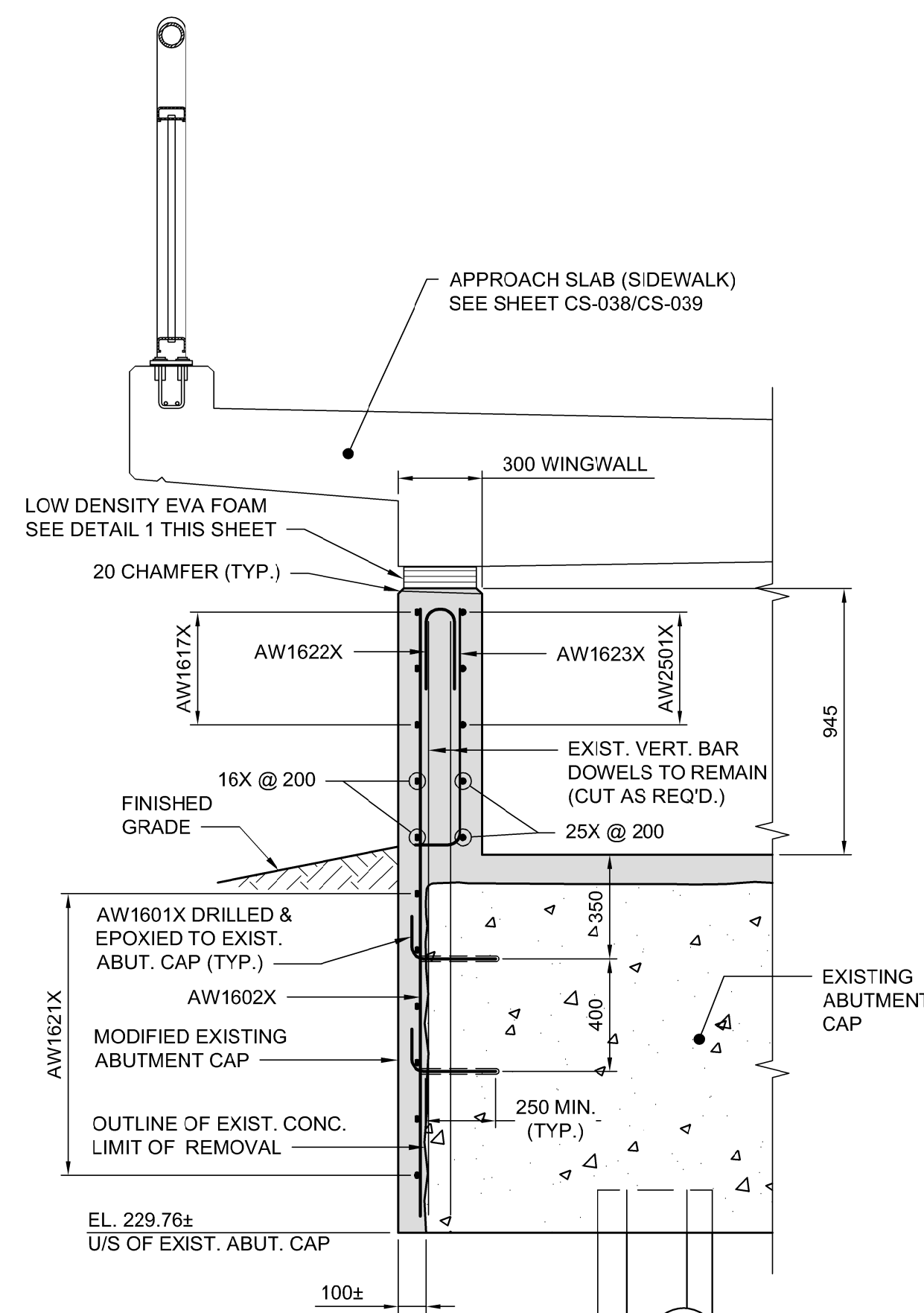
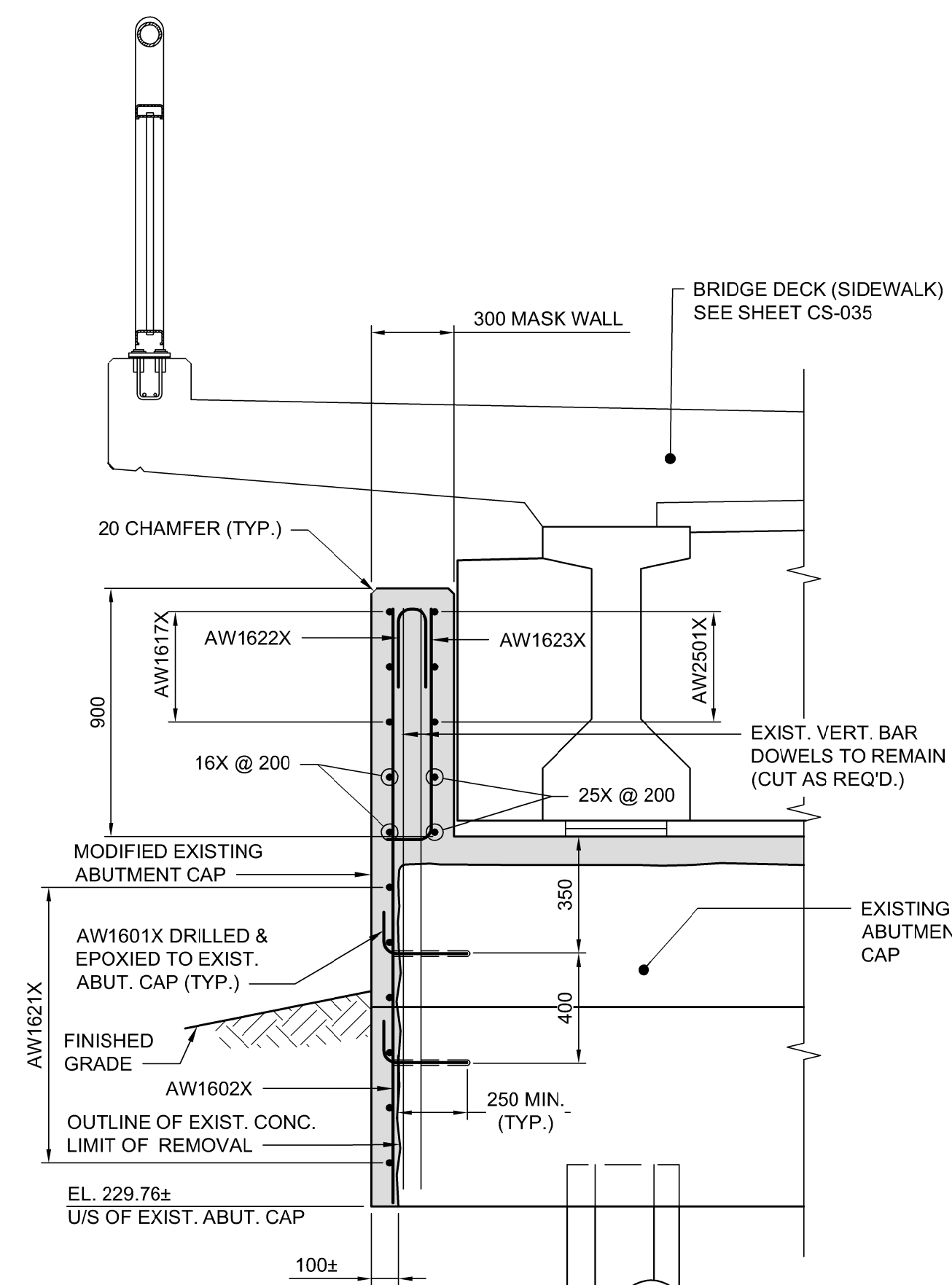


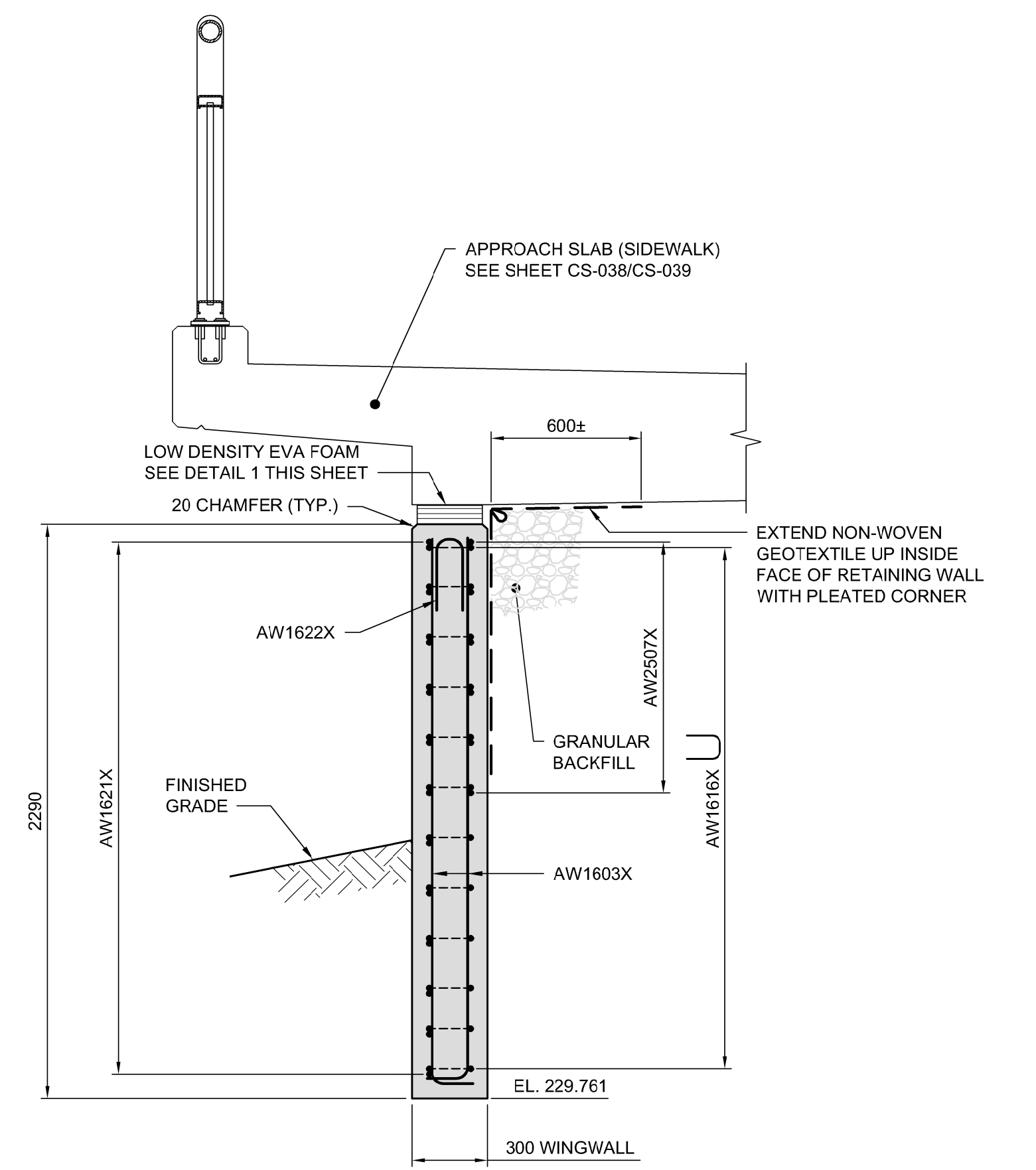
**C SECTION**  
CS-020 1:20



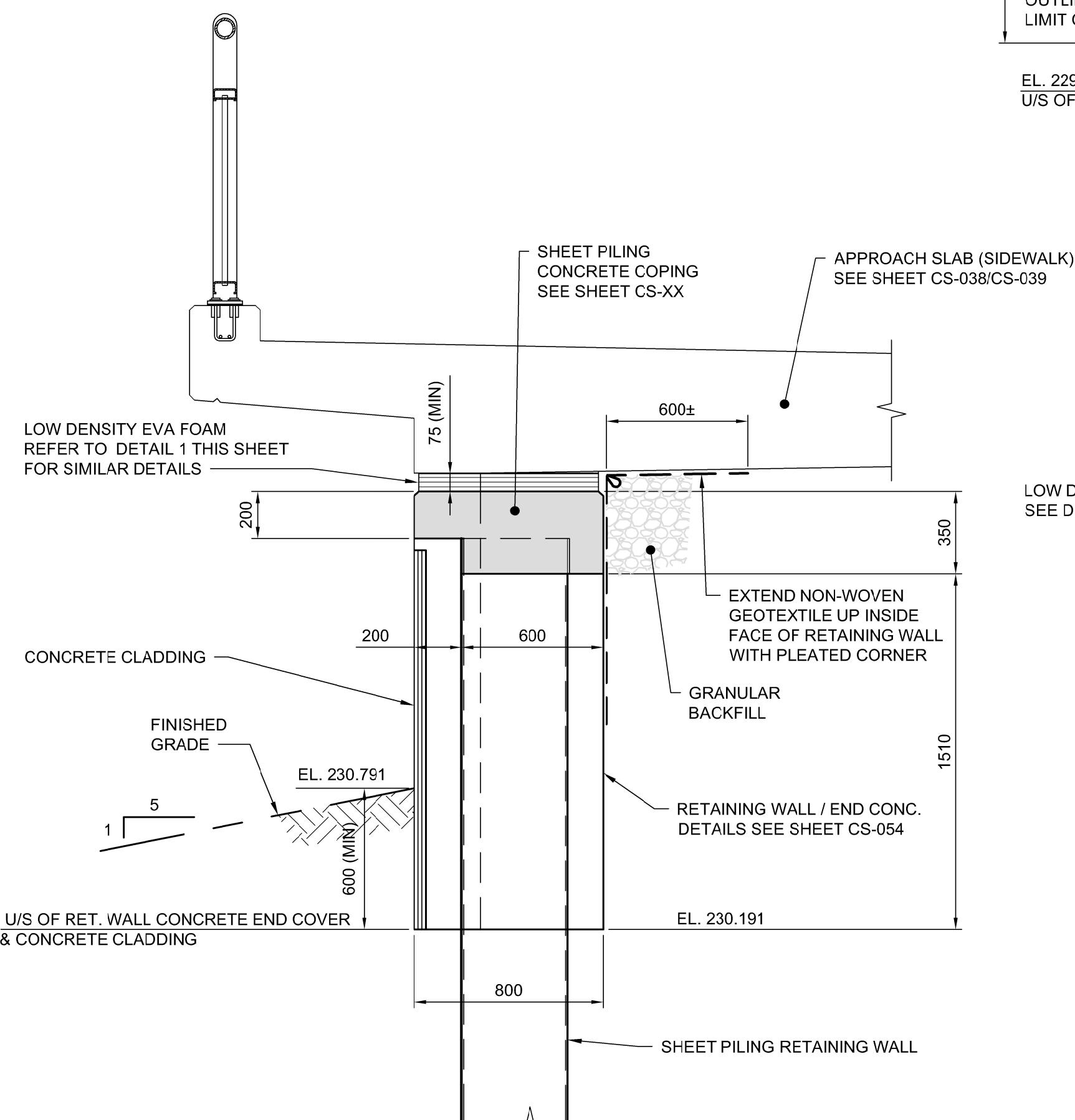
**D SECTION**  
CS-020 1:20



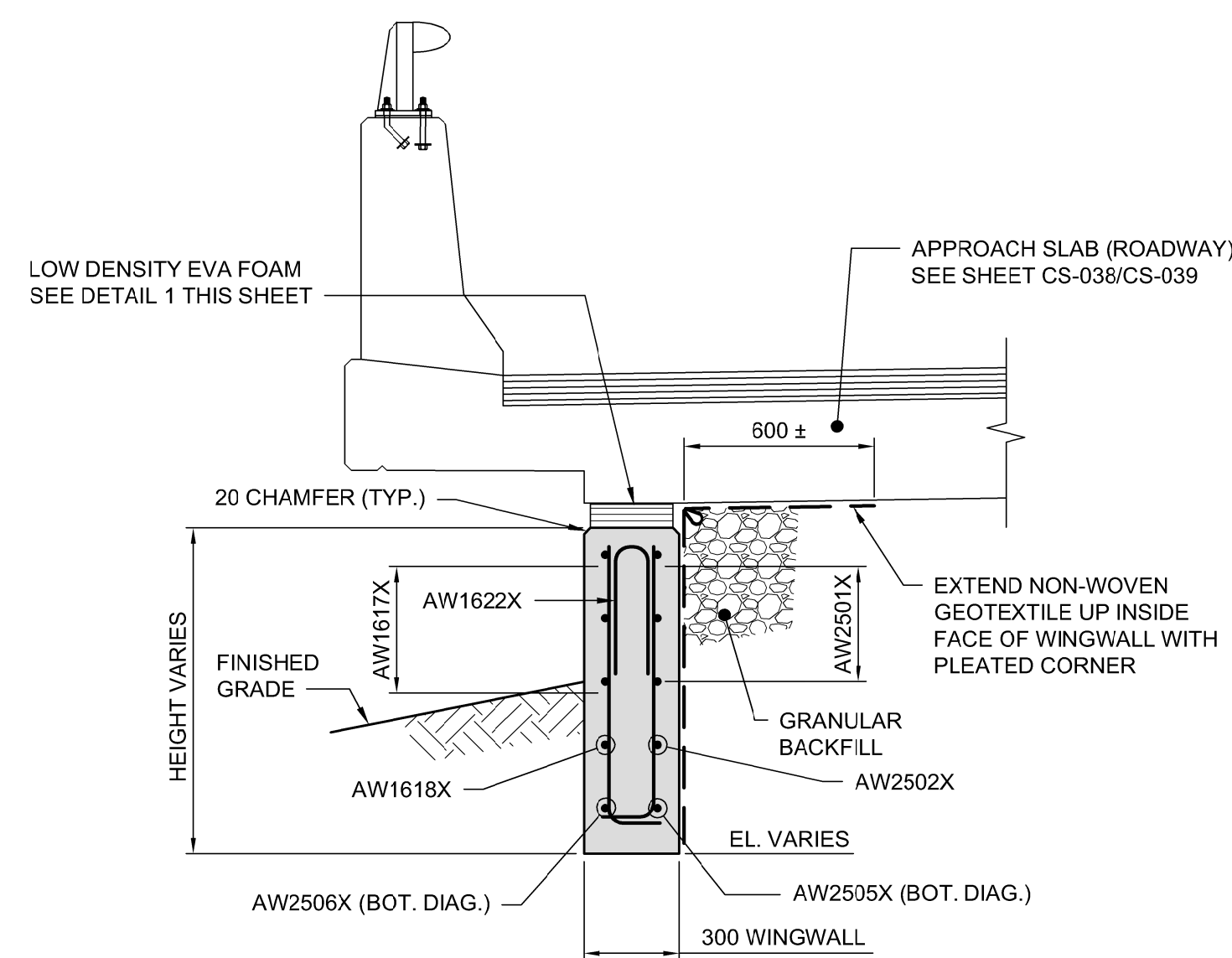
**E SECTION**  
CS-020 1:20



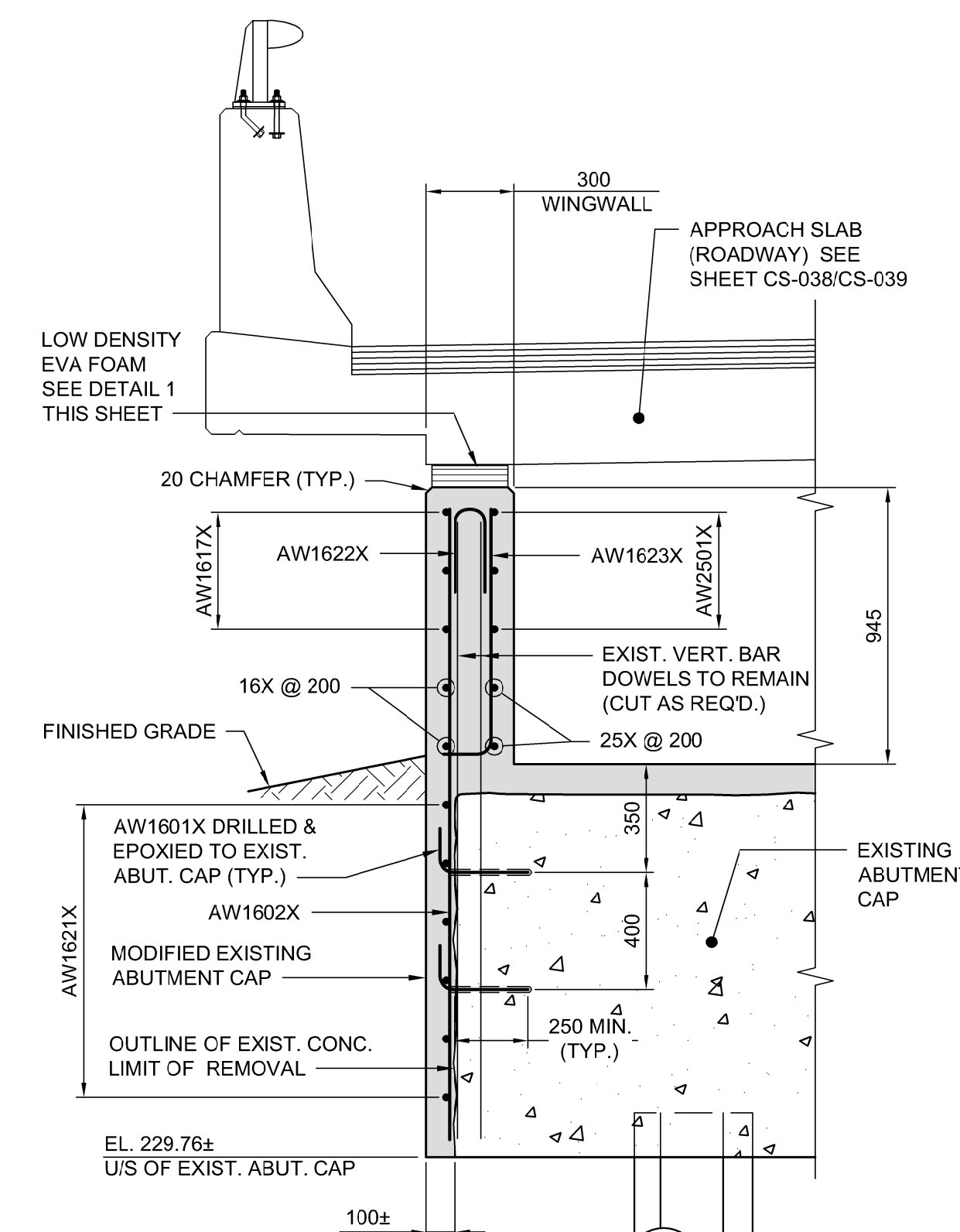
**F SECTION**  
CS-020 1:20



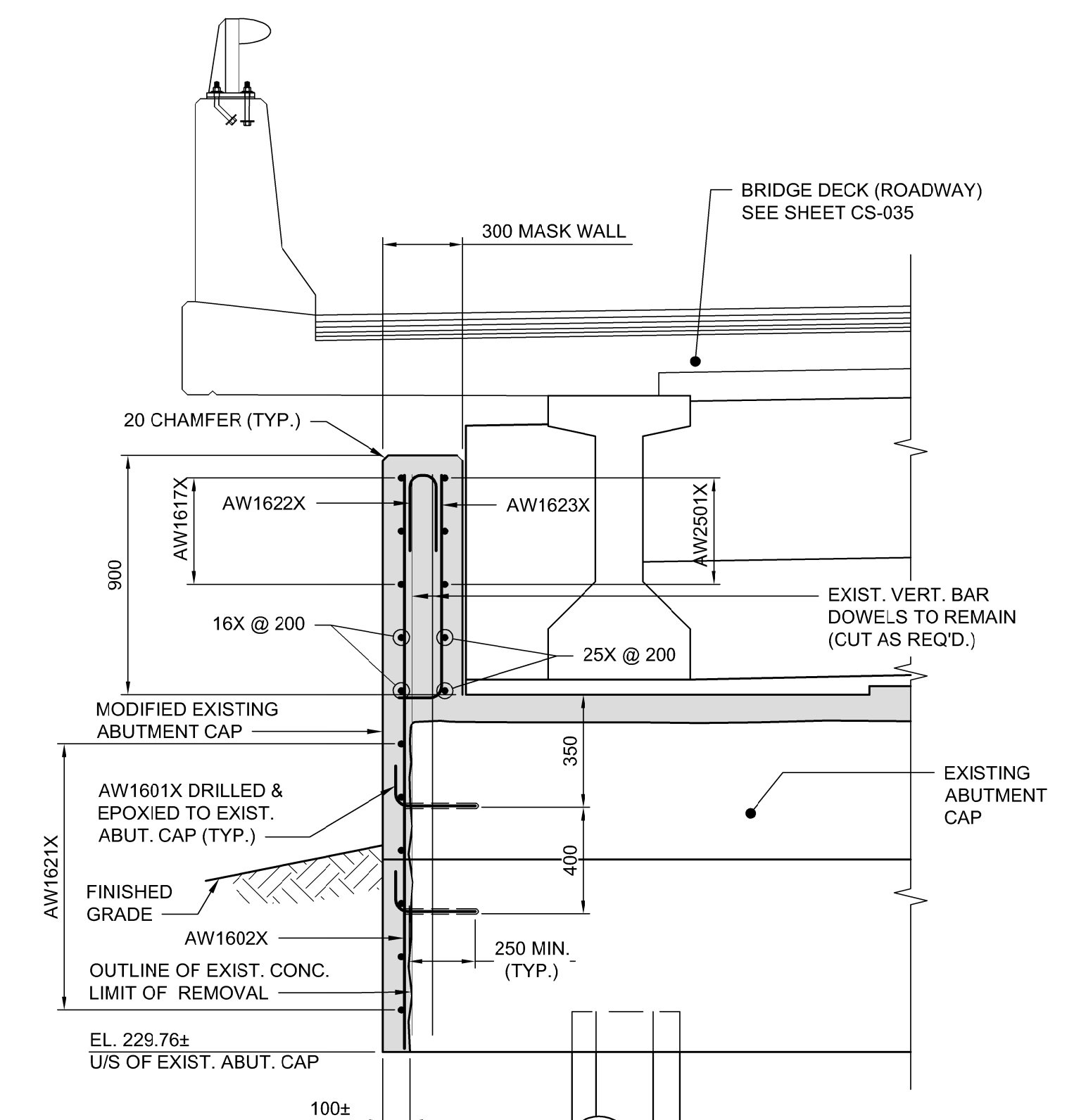
**G SECTION**  
CS-020 1:20



**H SECTION**  
CS-020 1:20

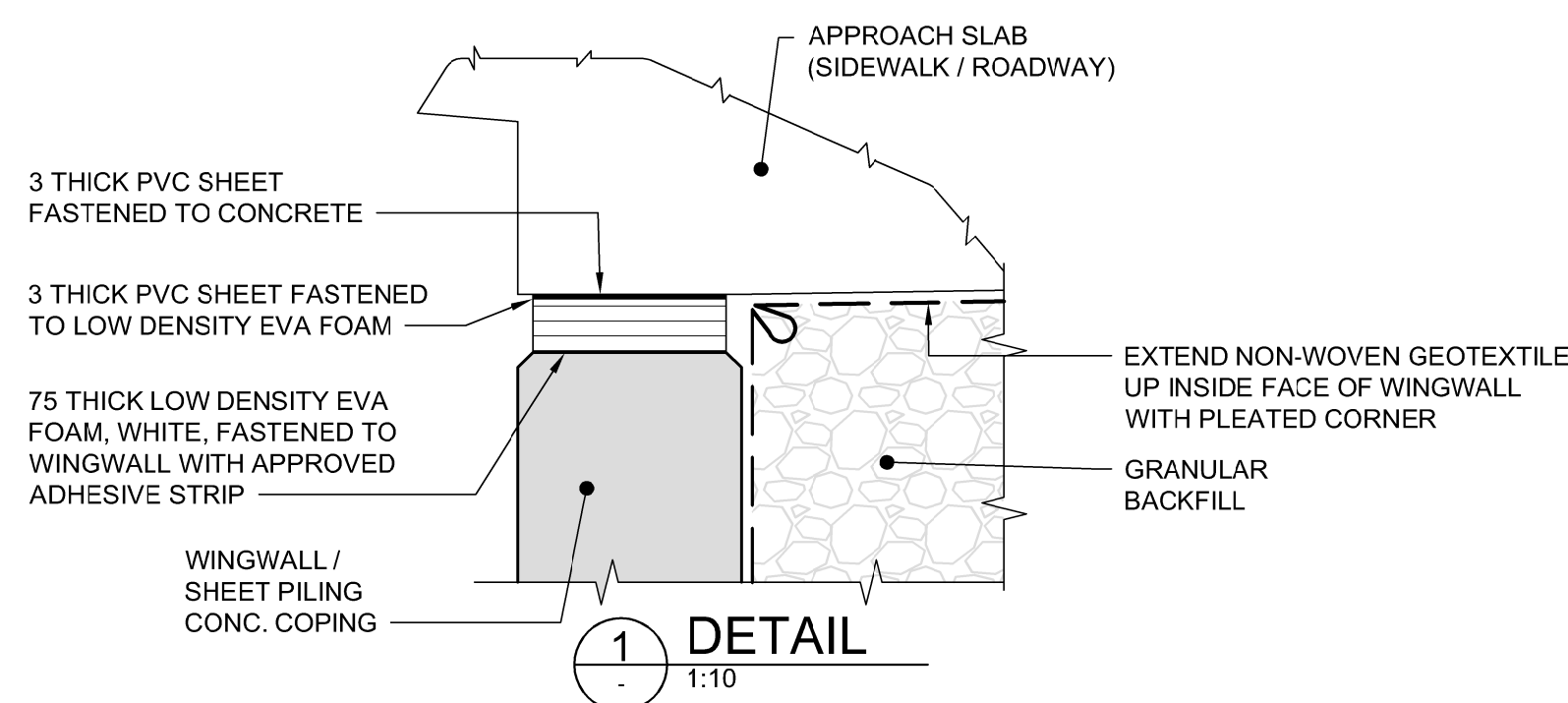


**J SECTION**  
CS-020 1:20



**K SECTION**  
CS-020 1:20

- NOTES:**
- ALL CONCRETE FACES BELOW GRADE SHALL BE FINISHED WITH ASPHALTIC DAMPPROOFING.
  - ALL CORNERS TO BE CHAMFERED 20 mm U/N



**1 DETAIL**  
1:10

**APEGM**  
Certificate of Authorization  
Dillon Consulting Limited (MB)  
No. 1789 Date: 2018/02/09

DESIGNED BY	MS	CHECKED BY	SSR
DRAWN BY	NBG	APPROVED BY	MBL
HOR. SCALE	AS SHOWN	RELEASED FOR CONSTRUCTION	
VERTICAL	AS SHOWN		
ISSUED FOR TENDER	18/02/09	DRA	
NO. REVISIONS	DATE	BY	DATE
0	2018/02/09		

ENGINEER'S SEAL  
PROVINCE OF MANITOBA  
**D.R.C. AMORIM**  
Member 33215  
REGISTERED PROFESSIONAL ENGINEER  
CONSULTANT PROJECT NUMBER  
17-5932

**THE CITY OF WINNIPEG**  
PUBLIC WORKS DEPARTMENT  
**Winnipeg**  
**FERMOR AVENUE BRIDGE OVER SEINE RIVER**  
BRIDGE RE-ABILITATION, PEDESTRIAN-CYCLIST UNDERPASS STRUCTURE AND ROADWORKS FROM ST. ANNE'S ROAD TO ARCHIBALD STREET  
CITY DRAWING NUMBER  
B-118-2017-CS-021  
SHEET 021 OF 100  
CONSULTANT DRAWING NUMBER  
CS-021

G:\CAD\175932\Drawings\Structural\CONTRACT\BRIDGE-CON-CS-ABUTMENT\_MODIFICATION\_5.dwg