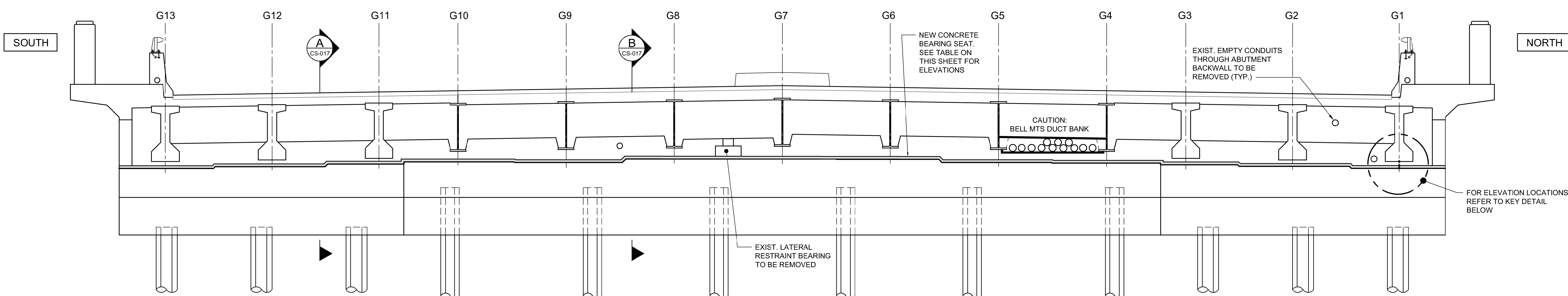


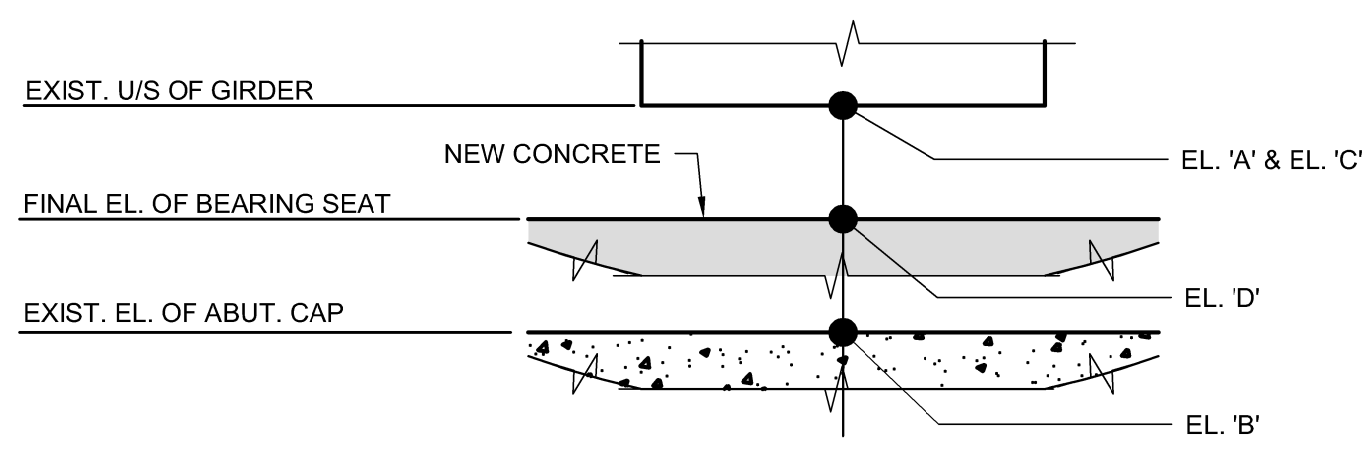
EAST ABUTMENT FRONT ELEVATION
1:40
NOTE: EXISTING SUPERSTRUCTURE SHOWN



WEST ABUTMENT FRONT ELEVATION
1:40
NOTE: EXISTING SUPERSTRUCTURE SHOWN

EAST ABUTMENT				
ELEVATION LOCATION	EL. 'A' EXISTING U/S OF GIRDER ELEVATIONS (SITE SURVEY)	EL. 'B' EXISTING ELEVATION OF ABUTMENT CAP AT GIRDER CL (SITE SURVEY)	EL. 'C' PROPOSED U/S OF GIRDER ELEVATION	EL. 'D' FINAL ELEVATION OF BEARING SEAT AT ABUTMENT CL
G1	231.259	231.104	231.254	231.125
G2	231.267	231.108	231.273	231.144
G3	231.296	231.143	231.300	231.171
G4	231.447	231.248	231.448	231.351
G5	231.468	231.241	231.475	231.378
G6	231.511	231.309	231.509	231.412
G7	231.531	231.307	231.531	231.434
G8	231.507	231.312	231.509	231.412
G9	231.481	231.240	231.475	231.378
G10	231.449	231.245	231.448	231.351
G11	231.303	231.145	231.300	231.171
G12	231.279	231.122	231.273	231.144
G13	231.249	231.085	231.254	231.125

WEST ABUTMENT				
ELEVATION LOCATION	EL. 'A' EXISTING U/S OF GIRDER ELEVATIONS (SITE SURVEY)	EL. 'B' EXISTING ELEVATION OF ABUTMENT CAP AT GIRDER CL (SITE SURVEY)	EL. 'C' PROPOSED U/S OF GIRDER ELEVATION	EL. 'D' FINAL ELEVATION OF BEARING SEAT AT ABUTMENT CL
G1	231.235	231.069	231.232	231.103
G2	231.253	231.096	231.254	231.125
G3	231.286	231.127	231.295	231.166
G4	231.383	231.168	231.387	231.290
G5	231.410	231.159	231.412	231.315
G6	231.446	231.230	231.450	231.353
G7	231.478	231.242	231.478	231.381
G8	231.454	231.244	231.450	231.353
G9	231.414	231.172	231.412	231.315
G10	231.390	231.188	231.387	231.290
G11	231.303	231.139	231.295	231.166
G12	231.255	231.087	231.254	231.125
G13	231.228	231.069	231.232	231.103



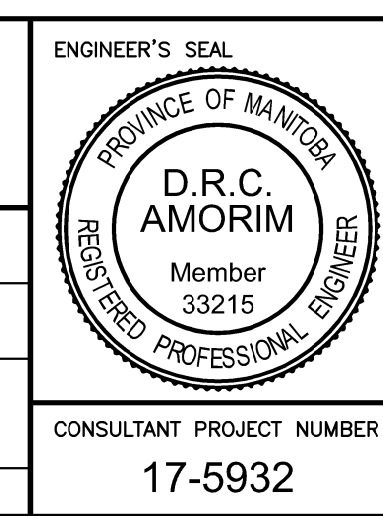
KEY DETAIL
NOTE: REFER TO TABLES SHOWN THIS SHEET FOR ELEVATIONS

- NOTES:**
- THE EXISTING U/S GIRDER ELEVATIONS DO NOT APPEAR TO AGREE WITH THE THEORETICAL U/S GIRDER ELEVATIONS FROM THE 1954, 1969 AND 1984 DRAWINGS.
 - THE DESIGN PHILOSOPHY WAS TO MAINTAIN THE UNDERSIDE GIRDER ELEVATIONS AFTER REHABILITATION TO LIMIT STRESSES IN THE STRUCTURE OTHERWISE CAUSED BY DIFFERENTIAL GIRDER MOVEMENTS.
 - THE ELEVATIONS IN THE TABLE WERE SURVEYED BY DILLON CONSULTING LIMITED IN OCTOBER, 2017. THE CONTRACTOR SHALL VERIFY THE EXISTING UNDERSIDE GIRDER ELEVATIONS PRIOR TO JACKING THE SUPERSTRUCTURE AND REVIEW THE RESULTS WITH THE CONTRACT ADMINISTRATOR.
 - EXISTING OR PROPOSED BEARINGS ARE NOT SHOWN FOR CLARITY. SEE SHEETS CS-022 & CS-023 FOR BEARING DETAILS.

G:\CAD\175932\Drawings\Structural\Contract\BRIDGE-CON-CS-ABUTMENT_MODIFICATION_2.dwg



DESIGNED BY: DRA		CHECKED BY: SSR	
DRAWN BY: NBG		APPROVED BY: MBL	
HOR. SCALE: AS SHOWN		RELEASED FOR CONSTRUCTION: DATE	
VERTICAL: AS SHOWN		DATE: 2018/02/09	
ISSUED FOR TENDER	18/02/09	DRA	
NO. REVISIONS	DATE	BY	DATE



THE CITY OF WINNIPEG
PUBLIC WORKS DEPARTMENT

FERMOR AVENUE BRIDGE OVER SEINE RIVER
BRIDGE RE-HABILITATION, PEDESTRIAN-CYCLIST UNDERPASS STRUCTURE AND ROADWORKS FROM ST. ANNE'S ROAD TO ARCHIBALD STREET

CITY DRAWING NUMBER: B-118-2017-CS-018
SHEET 018 OF 100
CONSULTANT DRAWING NUMBER: CS-018

CONSULTANT PROJECT NUMBER: 17-5932

ABUTMENT MODIFICATIONS 2 OF 5
NEW BEARING SEAT ELEVATIONS