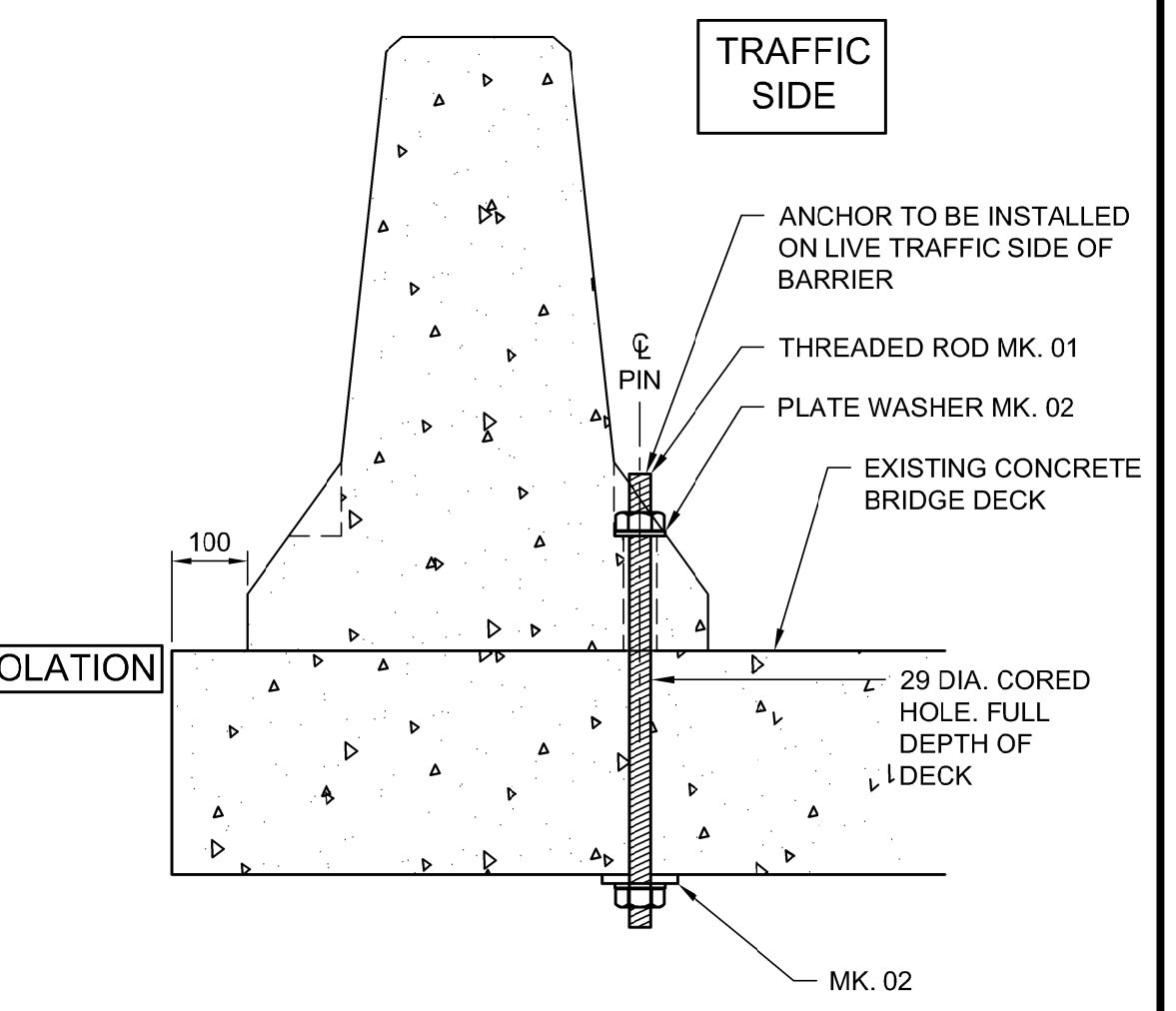
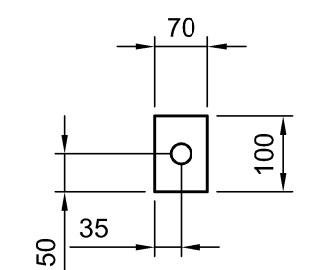


- NOTES:**
1. THE INTENT OF THIS DRAWING IS TO SHOW THE INTENDED CONSTRUCTION STAGING FOR THE PROPOSED BRIDGE WORKS.
 2. BRIDGE WORKS STAGING DRAWINGS TO BE READ IN CONJUNCTION WITH ROADWORKS STAGING DRAWINGS SHEET NO. GE-010 TO 021

- STAGE 1 (2018)**
- 1.1 DIRECT TRAFFIC TO SOUTH PORTION OF STRUCTURE (ONE LANE EACH DIRECTION).
 - 1.2 ISOLATE STAGE 1 AND STAGE 2 SUPERSTRUCTURES.
 - 1.3 COMPLETE STAGE 1 WORKS AND PREPARE FOR WINTER SHUTDOWN.



DETAIL TYPICAL PRECAST PORTABLE CONCRETE BARRIER
1:10



WASHER PLATE MK. 02 DETAIL
1:5

- NOTES:**
1. THE CITY WILL SUPPLY THE CONTRACTOR WITH ALL PPCBs REQUIRED FOR THE PROJECT. SPECIFICALLY, THE CITY WILL PROVIDE A TOTAL OF SIXTY (60) ANCHORABLE BARRIERS AND EIGHTY (80) STANDARD BARRIERS. THESE BARRIERS WILL BE AVAILABLE TO THE CONTRACTOR AS SPECIFIED IN BID OPPORTUNITY 1104-2017. THE CONTRACTOR SHOULD REVIEW THIS BID OPPORTUNITY AND FAMILIARIZE HIMSELF WITH THE PICKUP AND BARRIER AVAILABILITY REQUIREMENTS.
 2. ALL BARRIERS INCLUDING HARDWARE SHALL BE RETURNED TO THE CITY AT THE COMPLETION OF THE PROJECT IN AN UNDAMAGED STATE AS SPECIFIED IN THE CONTRACT DOCUMENTS.
 3. THE CONTRACTOR IS RESPONSIBLE FOR SUPPLYING THE ANCHORAGES DETAILED ON THIS SHEET FOR THE ANCHORABLE PPCBs.

- PPCB INSTALLATION NOTES:**
1. THE CONTRACTOR SHALL LAY OUT THE PPCBs ON THE DECK SLAB IN THEIR PROPOSED LOCATIONS.
 2. THE ANCHORAGE POINTS SHALL BE MARKED AND THE REINFORCEMENT IN THE SLAB SHALL BE LOCATED TO ENSURE THAT THE REINFORCEMENT IS NOT DAMAGED DURING ANCHORING (ONLY WHEN PINNING PPCBs TO REPAIRED DECK). THE BARRIER LOCATION MAY BE MINIMALLY ADJUSTED AS REQUIRED TO AVOID DAMAGE TO ANY REINFORCEMENT DURING ANCHORING.
 3. MOVE BARRIERS AND CORE FULL DEPTH HOLES INTO THE DECK SLAB CONCRETE. HOLES TO BE CLEAN AND FREE OF ALL LATENT MATERIAL PRIOR TO INSTALLING STAINLESS STEEL THREADED RODS.
 4. PLACE PRECAST BARRIERS IN PLACE, INSTALL 25 Ø HILTI C/W THREADED RODS, PLATE WASHERS AND NUTS, AND TIGHTEN TO ANCHOR THE BARRIER TO THE DECK SLAB.
 5. UPON REMOVAL OF THE BARRIERS, FILL CORED HOLE WITH APPROVED REPAIR MATERIAL FLUSH TO TOPSIDE OF DECK.

- LEGEND:**
- INDICATES EXISTING CONCRETE TO BE REMOVED
 - STAGE 1 & STAGE 2 ISOLATION (CONCRETE TO BE REMOVED)

BILL OF MISCELLANEOUS METAL				
MARK	No.	DESCRIPTION	MASS PER UNIT	TOTAL MASS (kg)
01	120	29 DIA. x 600 THREADED ROD C/W 2-HEX NUTS	1.3	156.0
02	120	70 x 100 x 12 THICK PLATE WASHER	0.6	72.0
TOTAL MASS (kg) =				228.0

APEGM
Certificate of Authorization
Dillon Consulting Limited (MB)
No. 1789 Date: 2018/02/09

DESIGNED BY	DRA	CHECKED BY	SSR
DRAWN BY	NBG	APPROVED BY	MBL
HOR. SCALE	AS SHOWN	RELEASED FOR CONSTRUCTION	
VERTICAL	AS SHOWN		
ISSUED FOR TENDER	18/02/18	DATE	DRA
NO. REVISIONS		DATE	BY
		2018/02/09	

ENGINEER'S SEAL
PROVINCE OF MANITOBA
D.R.C. AMORIM
Member 33215
REGISTERED PROFESSIONAL ENGINEER
CONSULTANT PROJECT NUMBER
17-5932

THE CITY OF WINNIPEG
PUBLIC WORKS DEPARTMENT
Winnipeg

FERMOR AVENUE BRIDGE OVER SEINE RIVER
BRIDGE RE-HABILITATION, PEDESTRIAN-CYCLIST UNDERPASS STRUCTURE AND ROADWORKS FROM ST. ANNE'S ROAD TO ARCHIBALD STREET

CITY DRAWING NUMBER
B-118-2017-CS-010
SHEET 010 OF 100
CONSULTANT DRAWING NUMBER
CS - 010

BRIDGE CONSTRUCTION STAGING
1 OF 4

G:\CAD\175932\Drawings\Structural\BRIDGE\175932-BRIDGE-CON-CS-STAGING 1.dwg