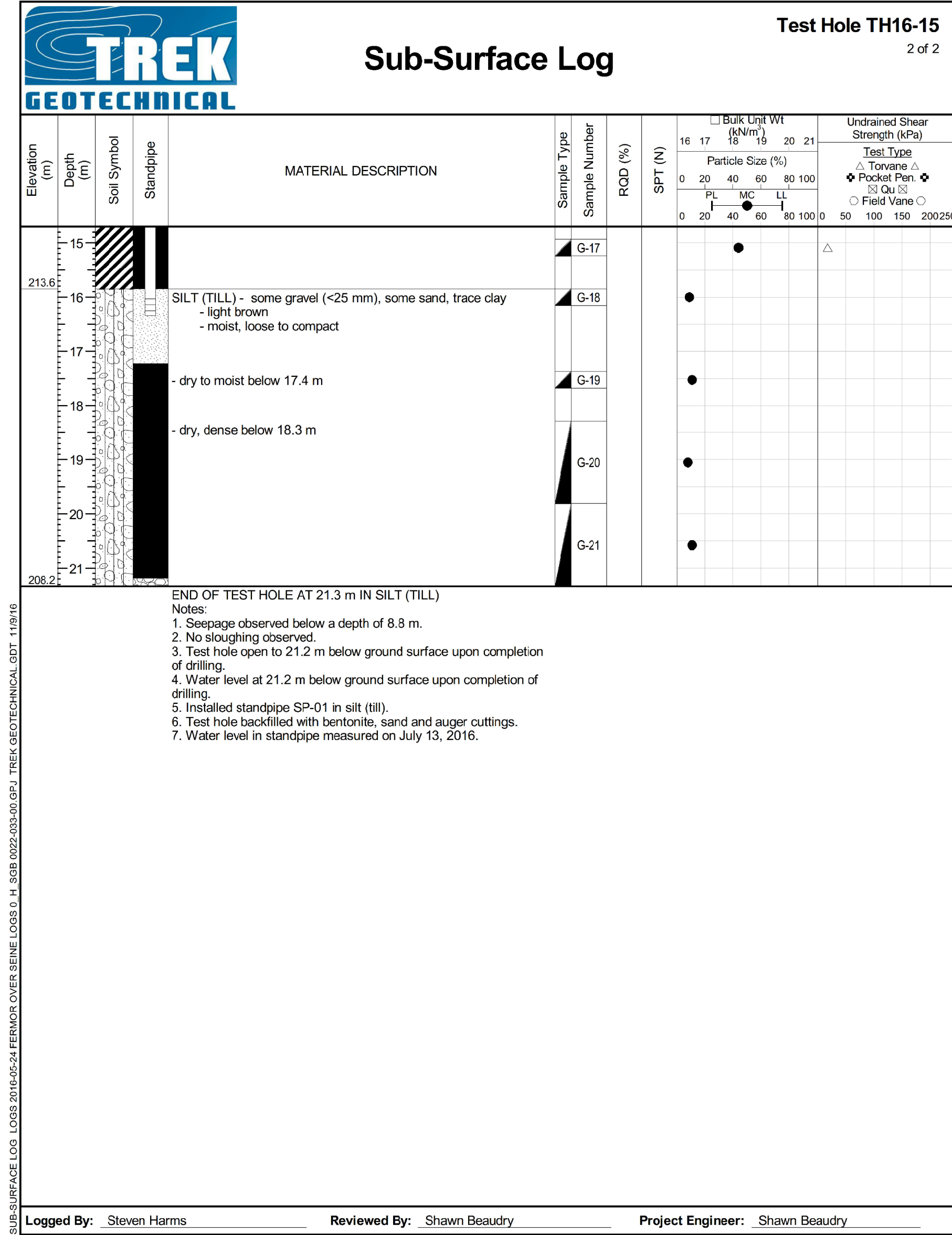
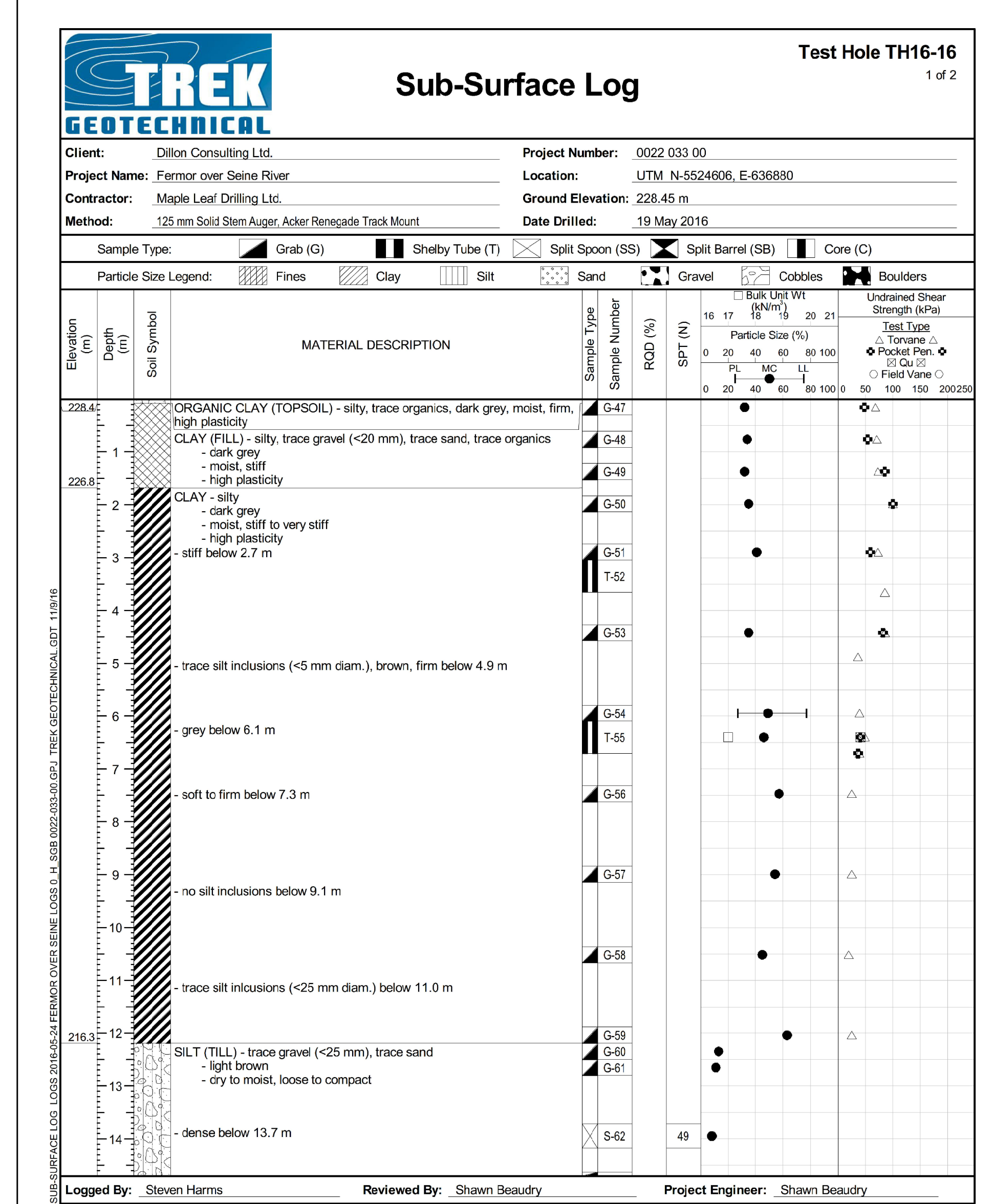


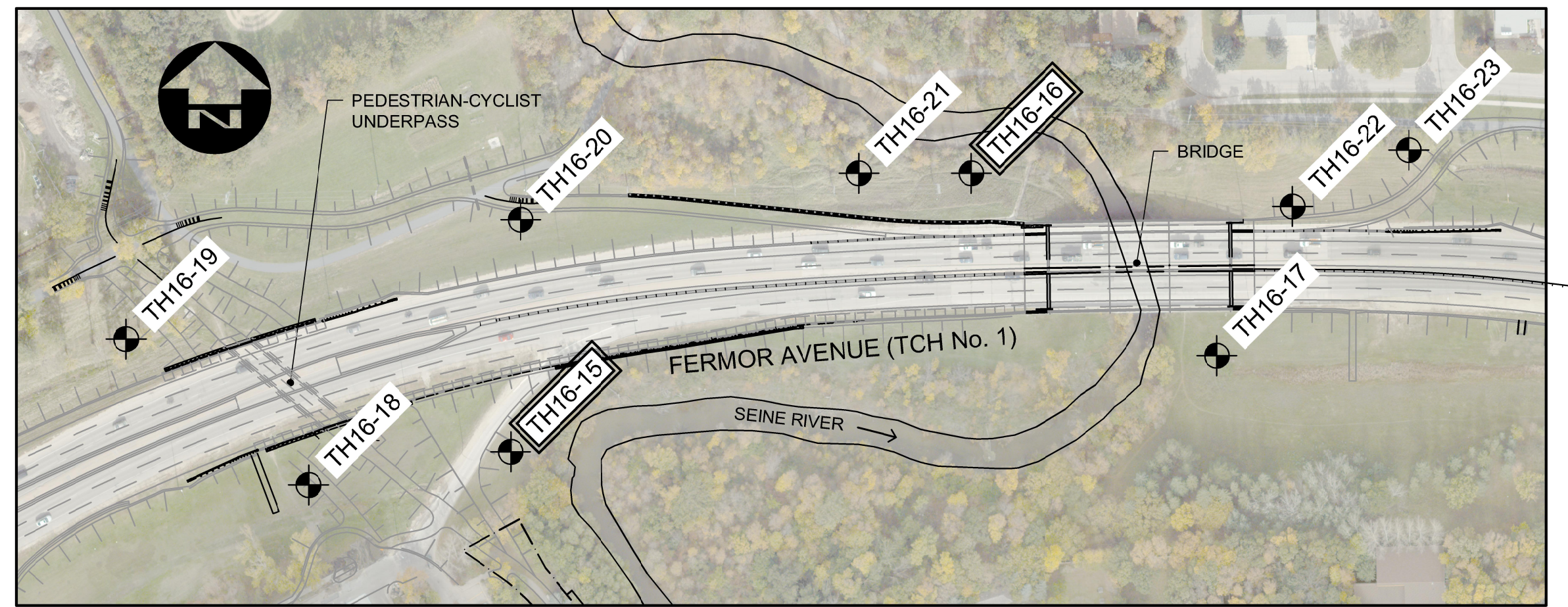
TEST HOLE No. TH16-15 (1 OF 2)



TEST HOLE No. TH16-15 (2 OF 2)



TEST HOLE No. TH16-16 (1 OF 2)



KEY PLAN
1:1500

- NOTES:**
- THE TEST HOLE LOGS PROVIDED FOR THIS PROJECT HAVE BEEN COMPILED FOR DESIGN PURPOSES ONLY. WHILE IT IS BELIEVED TO CORRECTLY REPRESENT OR SUMMARIZE OBSERVATIONS MADE DURING TESTING, THE INFORMATION IS VALID ONLY FOR THE PRECISE LOCATION SHOWN AND IS NOT TO BE CONSTRUED AS GUARANTEEING THE ACTUAL ABSENCE OR EXTENT OF BOULDERS, HARD OR SOFT FORMATIONS, WATER TABLES, ARTESIAN CONDITIONS AND OTHER VARIABLES. IT IS THE RESPONSIBILITY OF OTHERS USING THIS INFORMATION TO ENSURE THAT IT IS ADEQUATE FOR THEIR PURPOSES OR TO SUPPLEMENT IT WITH ADDITIONAL INFORMATION.
 - ADDITIONAL INFORMATION IS AVAILABLE IN THE GEOTECHNICAL REPORT AND IN CASE OF DISCREPANCY, THE GEOTECHNICAL REPORT GOVERNS.
 - AN EXPLANATION OF FIELD AND LABORATORY TESTING PERTAINING TO THE INFORMATION PROVIDED ON THE TEST HOLE LOGS IS INCLUDED IN THE GEOTECHNICAL REPORT.

DISCLAIMER NOTE:
THE GEOTECHNICAL INFORMATION PROVIDED ON THE LOGS ARE IN ACCORDANCE WITH CURRENT ENGINEERING PRINCIPLES AND PRACTICES (STANDARD OF PRACTICE). SOIL CONDITIONS ARE NATURAL DEPOSITS THAT CAN BE HIGHLY VARIABLE ACROSS A SITE AND MAY VARY BETWEEN TEST HOLES.

APEGM
Certificate of Authorization
Dillon Consulting Limited (MB)
No. 1789 Date: 2018/02/09

		ENGINEER'S SEAL			
DESIGNED BY	SSR	CHECKED BY	SSR	FERMOR AVENUE BRIDGE OVER SEINE RIVER BRIDGE RE-ABILITATION, PEDESTRIAN-CYCLIST UNDERPASS STRUCTURE AND ROADWORKS FROM ST. ANNE'S ROAD TO ARCHIBALD STREET	
DRAWN BY	NBG	APPROVED BY	MBL	CITY DRAWING NUMBER B-118-2017-CS-005	
HOR. SCALE	AS SHOWN	RELEASED FOR CONSTRUCTION		SHEET OF 005 OF 100	
VERTICAL	AS SHOWN	DATE	2018/02/09	CONSULTANT DRAWING NUMBER CS - 005	
ISSUED FOR TENDER			18/02/09	CONSULTANT PROJECT NUMBER 17-5932	
NO. REVISIONS			DATE	BORE HOLE 2 OF 6	

G:\CAD\175932\Drawings\Structural\Contract\BRIDGE-CON-CS-BOREHOLE_2.dwg