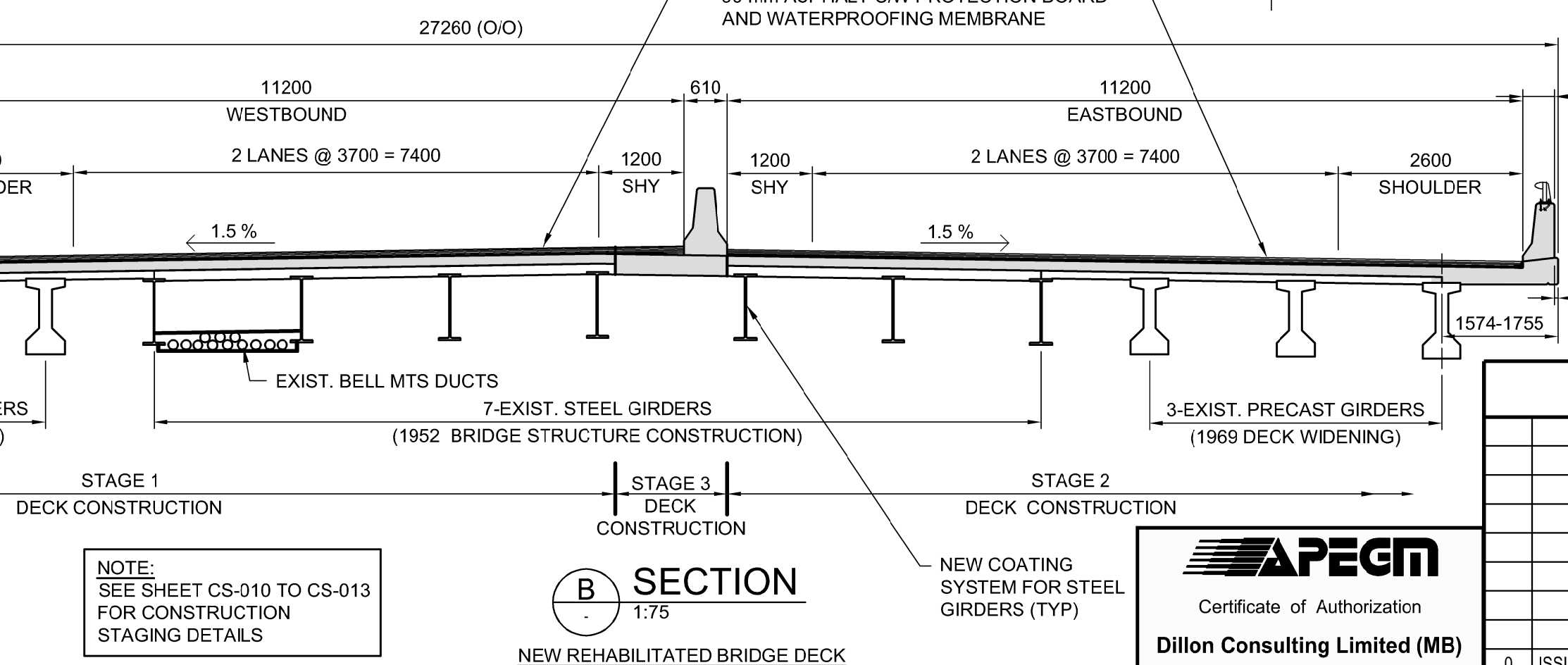
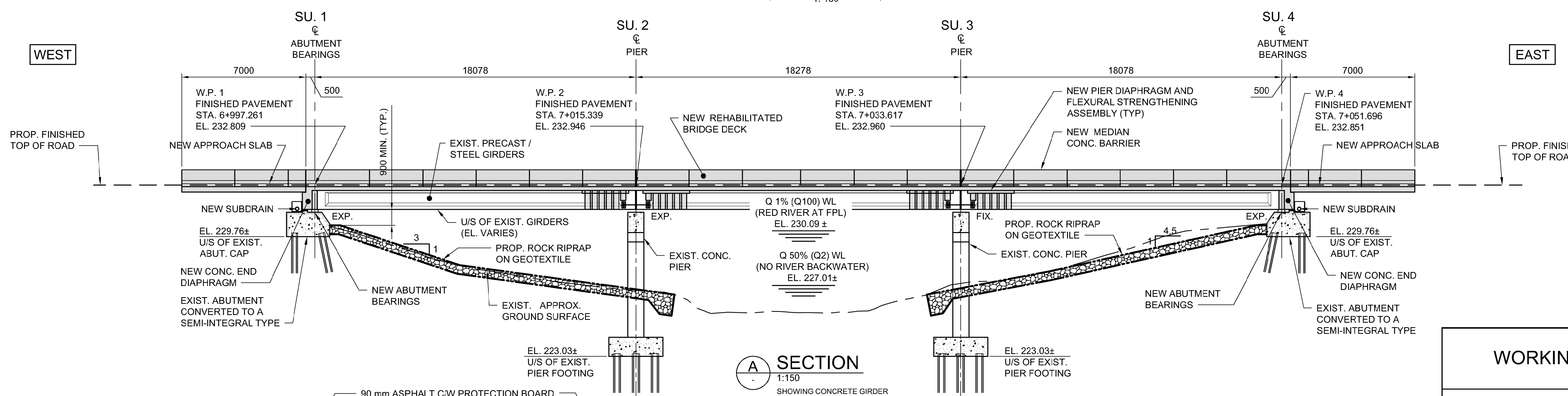


NOTE:
SEE SHEET CS-047 FOR THE LAYOUT OF RIPRAP SLOPE PROTECTION PLACED UNDER BRIDGE.



NOTE:
SEE SHEET CS-010 TO CS-013 FOR CONSTRUCTION STAGING DETAILS

WORKING POINT COORDINATES		
UTM GRID COORDINATE SYSTEM		
W.P. No.	NORTHING	EASTING
W.P. 1	5 524 577.554	636 903.535
W.P. 2	5 524 577.970	636 921.609
W.P. 3	5 524 578.236	636 939.885
W.P. 4	5 524 578.345	636 957.963

G:\CAD\175932\Drawings\Structural\Bridges\CON-CS-GENERAL_ARRANGEMENT.dwg

APEGM
Certificate of Authorization
Dillon Consulting Limited (MB)
No. 1789 Date: 2018/02/09

DESIGNED BY	DRA	CHECKED BY	SSR
DRAWN BY	NBG	APPROVED BY	MBL
HOR. SCALE	AS SHOWN	RELEASED FOR CONSTRUCTION	
VERTICAL	AS SHOWN		
ISSUED FOR TENDER	18/02/09	DATE	2018/02/09
NO. REVISIONS		DATE	

ENGINEER'S SEAL
PROVINCE OF MANITOBA
D.R.C. AMORIM
Member 33215
REGISTERED PROFESSIONAL ENGINEER
CONSULTANT PROJECT NUMBER
17-5932

THE CITY OF WINNIPEG
PUBLIC WORKS DEPARTMENT
Winnipeg
FERMOR AVENUE BRIDGE OVER SEINE RIVER
BRIDGE RE-HABILITATION, PEDESTRIAN-CYCLIST UNDERPASS STRUCTURE AND ROADWORKS FROM ST. ANNE'S ROAD TO ARCHIBALD STREET
CITY DRAWING NUMBER B-118-2017-CS-002
SHEET 002 OF 100
CONSULTANT DRAWING NUMBER CS-002
GENERAL ARRANGEMENT OF REHABILITATED BRIDGE