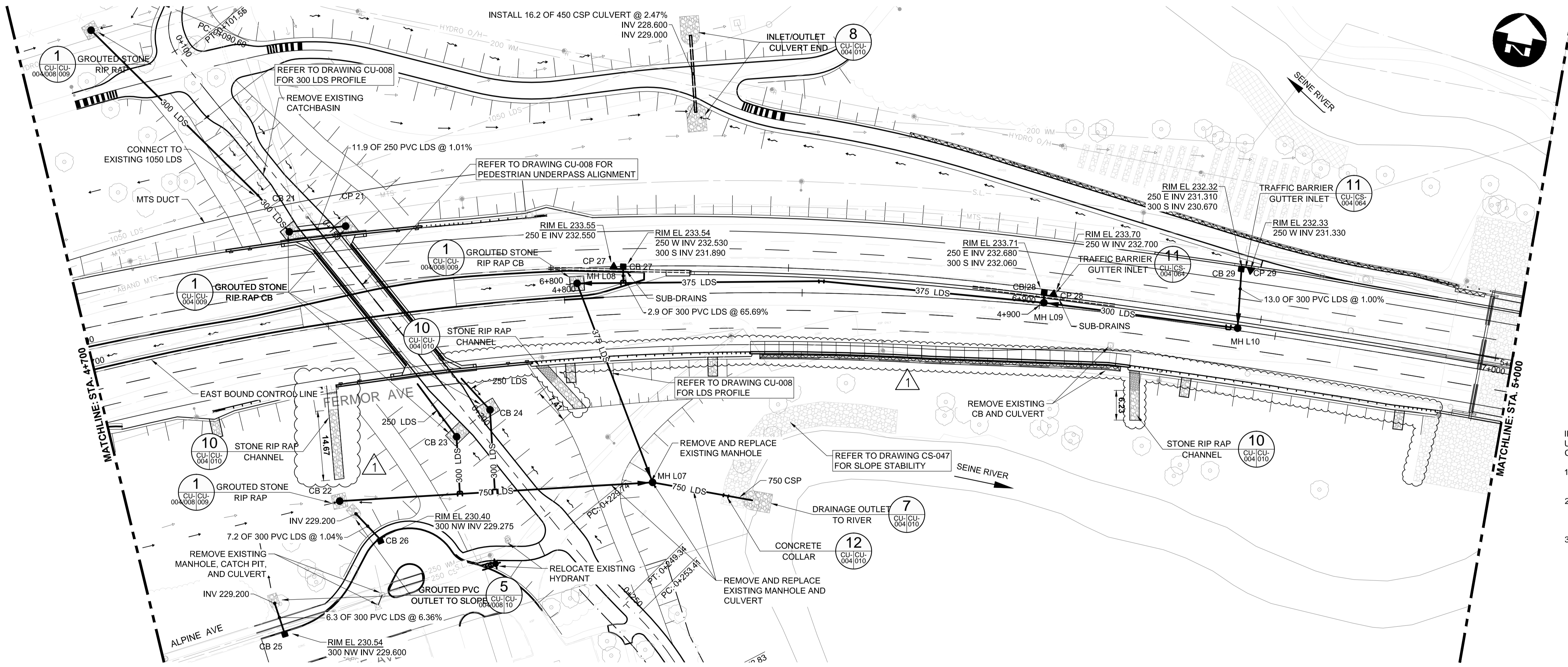


- CONSTRUCTION NOTES:**
- ALL DIMENSIONS ARE TO BACK OF CURB.
  - ISOLATE MISCELLANEOUS ITEMS IN NEW CONCRETE WORKS AS PER SD-228C.
  - LEGAL PLAN AND UNDERGROUND INFORMATION FROM CITY OF WINNIPEG LBIS.
  - CONTRACTOR TO TAKE PRECAUTIONARY STEPS TO AVOID DAMAGE FROM CONSTRUCTION ACTIVITIES TO TREES WITHIN THE LIMITS OF CONSTRUCTION.
  - LOCATION OF EXISTING SERVICES TO BE CONFIRMED IN THE FIELD BY THE CONTRACTOR.
  - CB LEADS TO BE INSTALLED AT MIN. 1.0% SLOPE OR AS DIRECTED BY CONTRACT ADMINISTRATOR.
  - ADJUST EXISTING CATCH BASINS AND MANHOLES AND ISOLATE AS PER SD-220A.
  - PROTECT EXISTING LEGAL PINS IN NEW PAVEMENT UTILIZING A WATER VALVE INSERT. GRIND OFF SYMBOL ON COVER.
  - CONCRETE PAVEMENT IN MINOR STREET APPROACHES, PRIVATE APPROACHES AND MEDIAN OPENINGS SHALL BE HAND PLACED WITH INTEGRAL CURB CONSTRUCTION (SD-203A OR SD-203B AS SPECIFIED). MAIN LINE CONCRETE PAVEMENT SHALL BE SLIP FORMED UNLESS OTHERWISE REQUIRED DUE TO TRAFFIC STAGING RESTRICTIONS.
  - INSTALL 150 mm SUB DRAIN IN BOTH DIRECTIONS OF CATCH BASINS WHERE INDICATED, ALONG PAVEMENT EDGE AS PER SD-245 AND CAP ENDS.
  - SEE STAGING DRAWINGS FOR REMOVAL AND ADJUSTMENT PHASING



**METRIC**  
WHOLE NUMBERS INDICATE MILLIMETRES  
DECIMAL NUMBERS INDICATE METRES

- WARNING**
- IF POWER EQUIPMENT OR EXPLOSIVES ARE TO BE USED FOR EXCAVATION ON THIS PROJECT THE CONTRACTOR MUST:
- NOTIFY THE GAS COMPANY OF THE PROPOSED LOCATION OF EXCAVATION.
  - TAKE PRECAUTION TO AVOID DAMAGE TO GAS COMPANY INSTALLATIONS SEE PROVINCIAL REGULATION 210/72 FOR DETAILS.
  - OBTAIN EXCAVATION PERMITS PRIOR TO CONSTRUCTION.

**APEGM**  
Certificate of Authorization  
**Dillon Consulting Limited (MB)**  
No. 1789 Date: 18/02/01

EXISTING	LEGEND-PLAN	PROPOSED	EXISTING	LEGEND-PLAN	PROPOSED	EXISTING	LEGEND-PROFILE	PROPOSED
150 WM	WATERMAIN	150 WM	CONCRETE	ASPHALT	150 WM	WATERMAIN	150 WM	WATERMAIN
300 LDS	HYDRANT	300 LDS	PLANING	SIDWALK	300 LDS	LAND DRAINAGE SEWER	300 LDS	LAND DRAINAGE SEWER
250 WWS	VALVE	250 WWS	PAVING STONES	PARTIAL DEPTH REPAIR	250 WWS	WASTE WATER SEWER	250 WWS	WASTE WATER SEWER
100 GAS	MANHOLE	100 GAS	PROPERTY LINE	DRAINAGE ARROW	100 GAS	HYDRANT	100 GAS	HYDRANT
300 LDS	CATCH BASIN	300 LDS	CURB RAMP (SD-229C)	DETECTABLE WARNING	300 LDS	VALVE	300 LDS	VALVE
250 WWS	CURB INLET	250 WWS	SURFACE TILE (SD-229AA)		250 WWS	Q PROFILE	250 WWS	Q PROFILE
HYDRO	LAND DRAINAGE SEWER	HYDRO			HYDRO	NORTH/WEST GUTTER	HYDRO	NORTH/WEST GUTTER
M.T.S.	WASTE WATER SEWER	M.T.S.			M.T.S.	SOUTH/EAST GUTTER	M.T.S.	SOUTH/EAST GUTTER
100 GAS	HYDRO	100 GAS			100 GAS	NORTH/WEST DITCH	100 GAS	NORTH/WEST DITCH
	M.T.S.					SOUTH/EAST DITCH		SOUTH/EAST DITCH

**UNDERGROUND STRUCTURES**

SUPPLY: U/G STRUCTURES DATE

LOCATION OF UNDERGROUND STRUCTURES AS SHOWN ARE BASED ON THE BEST INFORMATION AVAILABLE. BUT NO GUARANTEE IS GIVEN THAT ALL EXISTING UTILITIES ARE SHOWN OR THAT THE GIVEN LOCATIONS ARE EXACT. CONFIRMATION OF EXISTENCE AND EXACT LOCATION OF ALL SERVICES MUST BE OBTAINED FROM THE INDIVIDUAL UTILITIES BEFORE PROCEEDING WITH CONSTRUCTION.

B.M. ELEV.	DESIGNED BY	WPN	ENGINEER'S SEAL
	DRAWN BY	GLG	
	CHECKED BY	WPN	
	APPROVED BY		

NO.	REVISIONS	DATE	BY	DATE
1	ADDENDUM #5	18/03/16	WPN	
0	ISSUED FOR TENDER	18/02/09	WPN	

**DILLON CONSULTING**

RELEASED FOR CONSTRUCTION

CONSULTANT PROJECT NUMBER: 17-5932

**THE CITY OF WINNIPEG PUBLIC WORKS DEPARTMENT**

**FERMOR AVENUE BRIDGE OVER SEINE RIVER**  
BRIDGE REHABILITATION, PEDESTRIAN-CYCLIST UNDERPASS STRUCTURE AND ROADWORKS FROM ST. ANNE'S ROAD TO ARCHBOLD STREET

FERMOR AVENUE - STA. 4+700 TO STA. 5+000 (PLAN-PROFILE)

CITY DRAWING NUMBER: P-3489-2017-CU-004  
SHEET 004 OF 11  
CONSULTANT DRAWING NUMBER: CU-004

G:\CAD\175932\Drawings\Utilities\Contract\175932-COIN-CU-PLAN-PROFILE-FERMOR.dwg