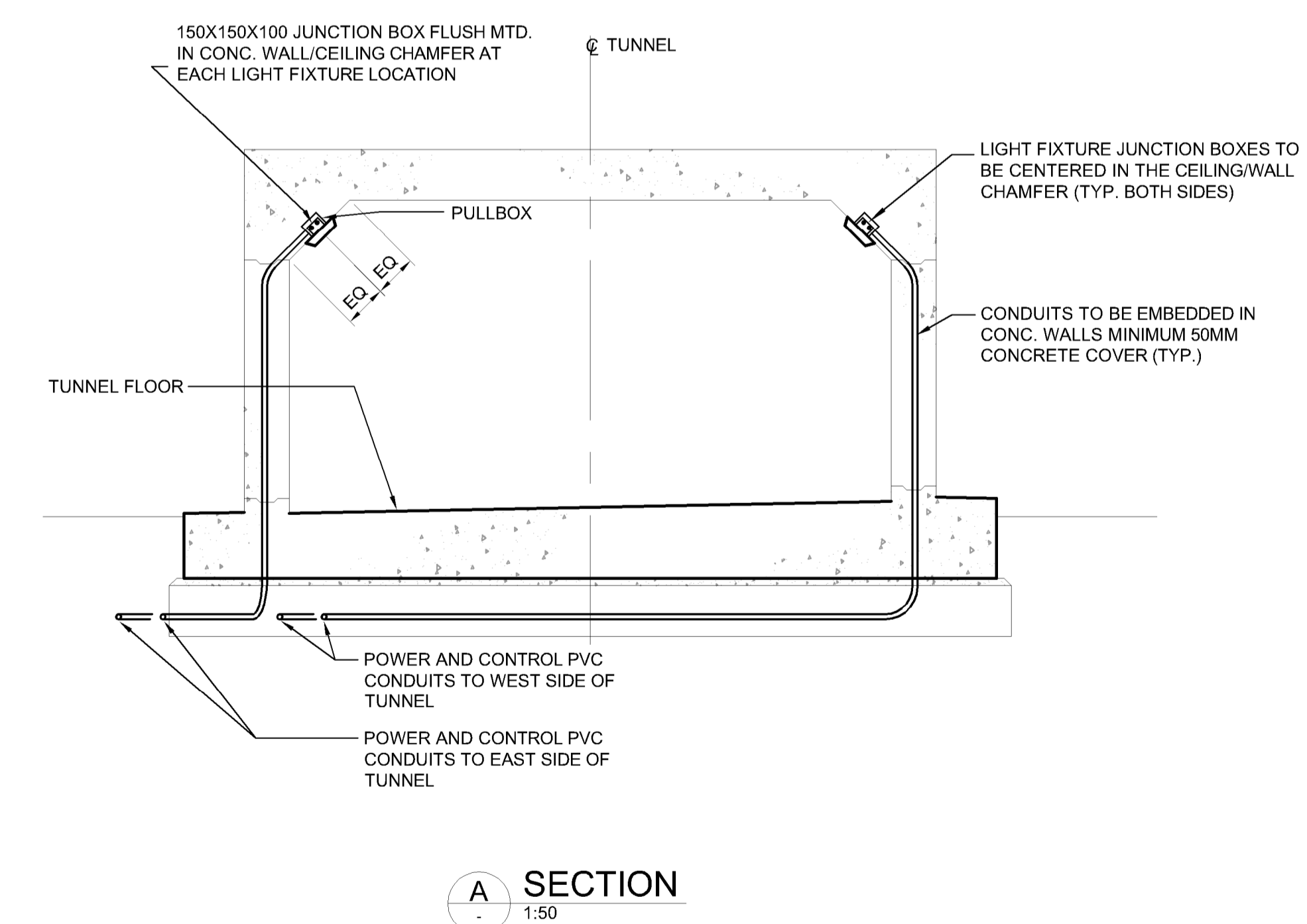
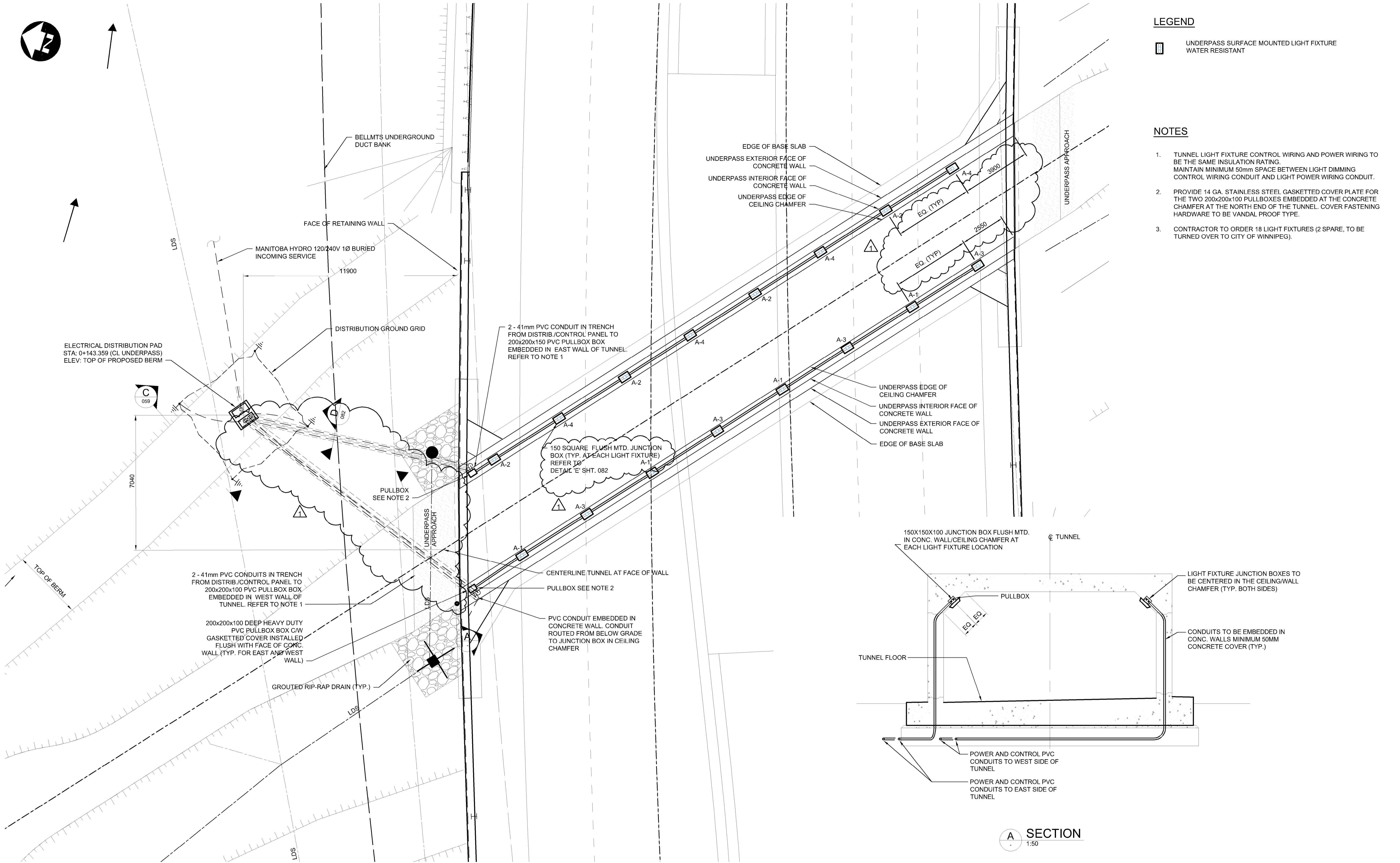


LEGEND

UNDERPASS SURFACE MOUNTED LIGHT FIXTURE
WATER RESISTANT

NOTES

- TUNNEL LIGHT FIXTURE CONTROL WIRING AND POWER WIRING TO BE THE SAME INSULATION RATING. MAINTAIN MINIMUM 50mm SPACE BETWEEN LIGHT DIMMING CONTROL WIRING CONDUIT AND LIGHT POWER WIRING CONDUIT.
- PROVIDE 14 GA. STAINLESS STEEL GASKETTED COVER PLATE FOR THE TWO 200x200x100 PULLBOXES EMBEDDED AT THE CONCRETE CHAMFER AT THE NORTH END OF THE TUNNEL. COVER FASTENING HARDWARE TO BE VANDAL PROOF TYPE.
- CONTRACTOR TO ORDER 18 LIGHT FIXTURES (2 SPARE, TO BE TURNED OVER TO CITY OF WINNIPEG).

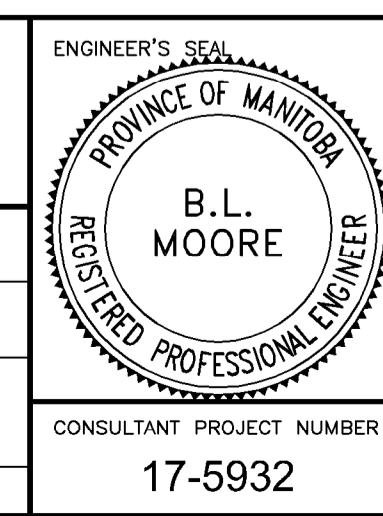


PLAN
1:100



NO.	REVISIONS	DATE	BY
1	ADDENDUM #5	18/03/16	DRA
0	ISSUED FOR TENDER	18/02/09	DRA

DESIGNED BY	BLM	CHECKED BY	BLM
DRAWN BY	SK	APPROVED BY	MBL
HOR. SCALE	AS SHOWN	RELEASED FOR CONSTRUCTION	
VERTICAL	AS SHOWN		
DATE	2018/02/09	DATE	



THE CITY OF WINNIPEG
PUBLIC WORKS DEPARTMENT

FERMOR AVENUE BRIDGE OVER SEINE RIVER
BRIDGE REHABILITATION, PEDESTRIAN-CYCLIST UNDERPASS STRUCTURE AND ROADWORKS FROM ST. ANNE'S ROAD TO ARCHIBALD STREET

PEDESTRIAN-CYCLIST UNDERPASS
LIGHTING PLAN

CITY DRAWING NUMBER
U-243-2017-CS-081

SHEET 081 OF 100

CONSULTANT DRAWING NUMBER
CS-081

CONSULTANT PROJECT NUMBER
17-5932

G:\CAD\175932\Drawings\Structural\Contract\UNDERPASS\175932-UNDERPASS-CON-CE-LIGHTING-PLANS.dwg