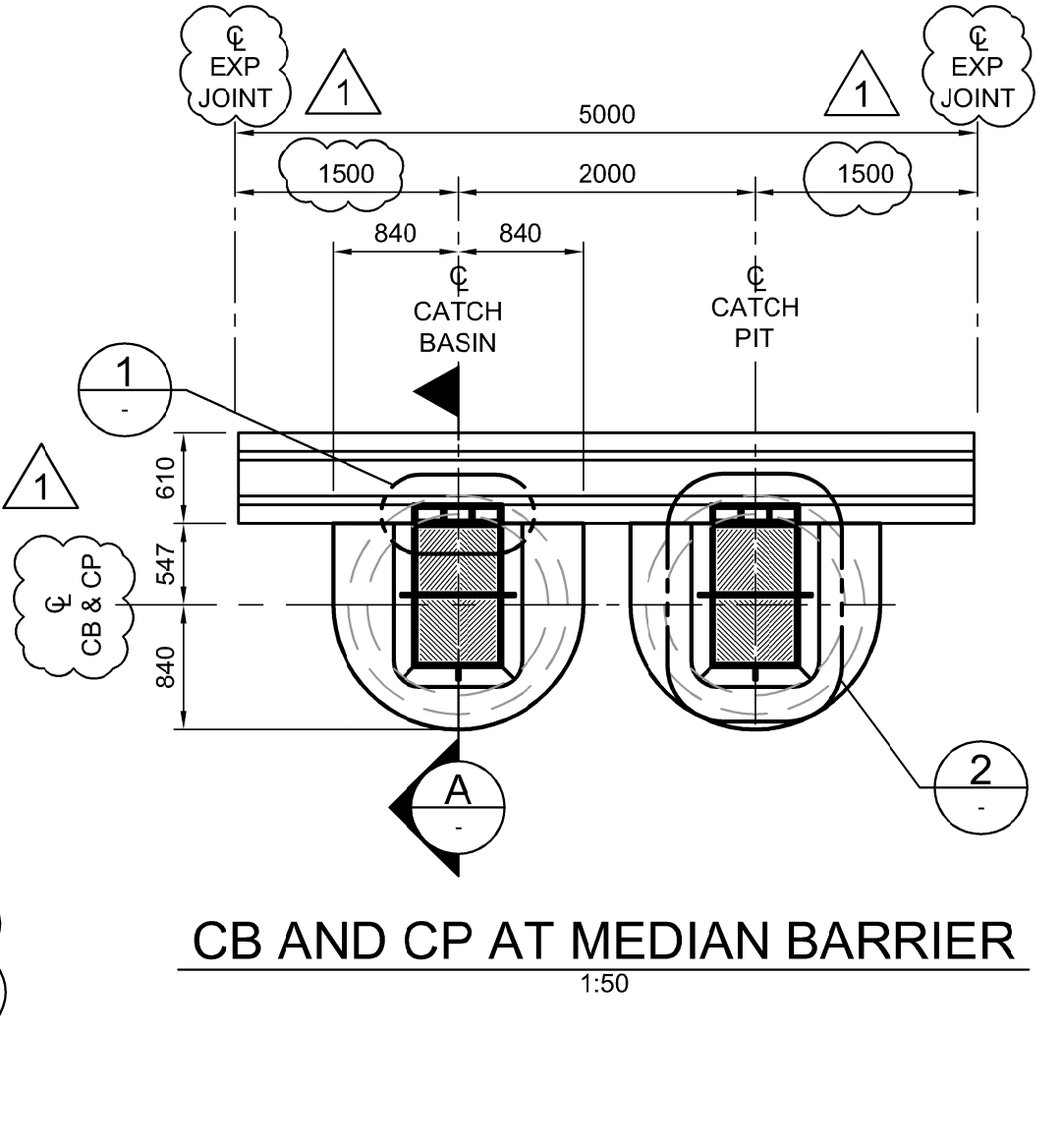
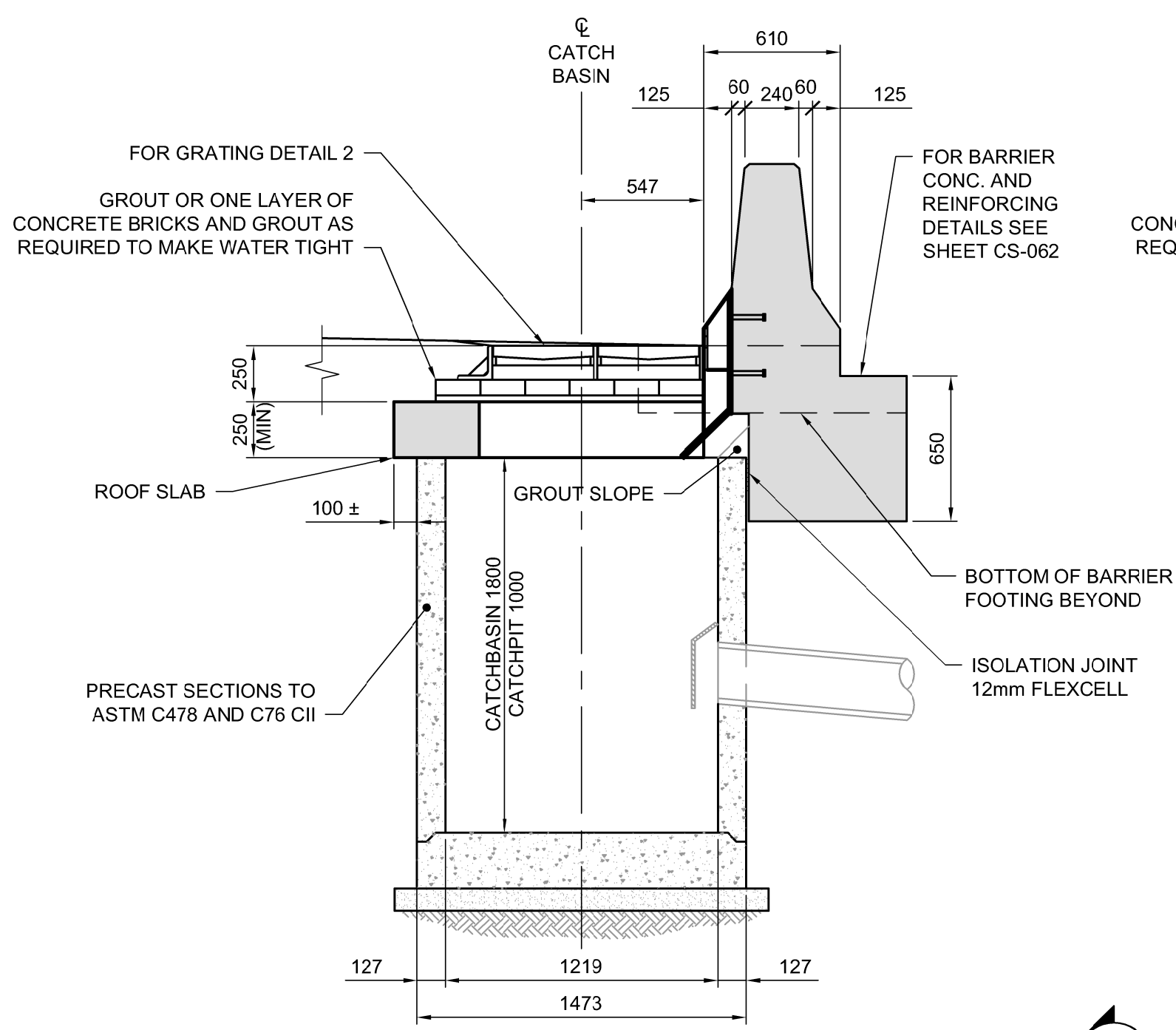


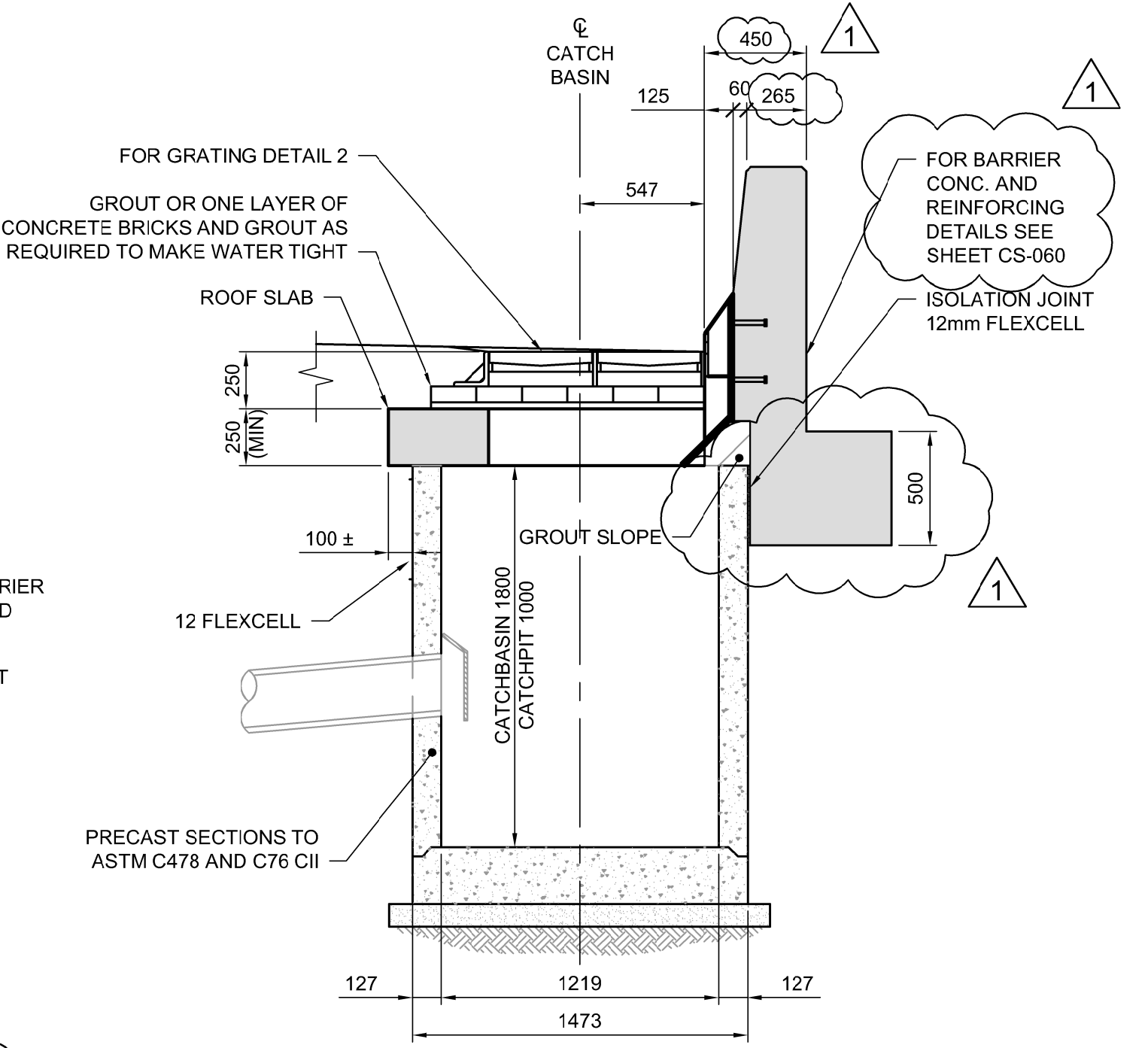
CB AND CP AT NORTH SHOULDER BARRIER



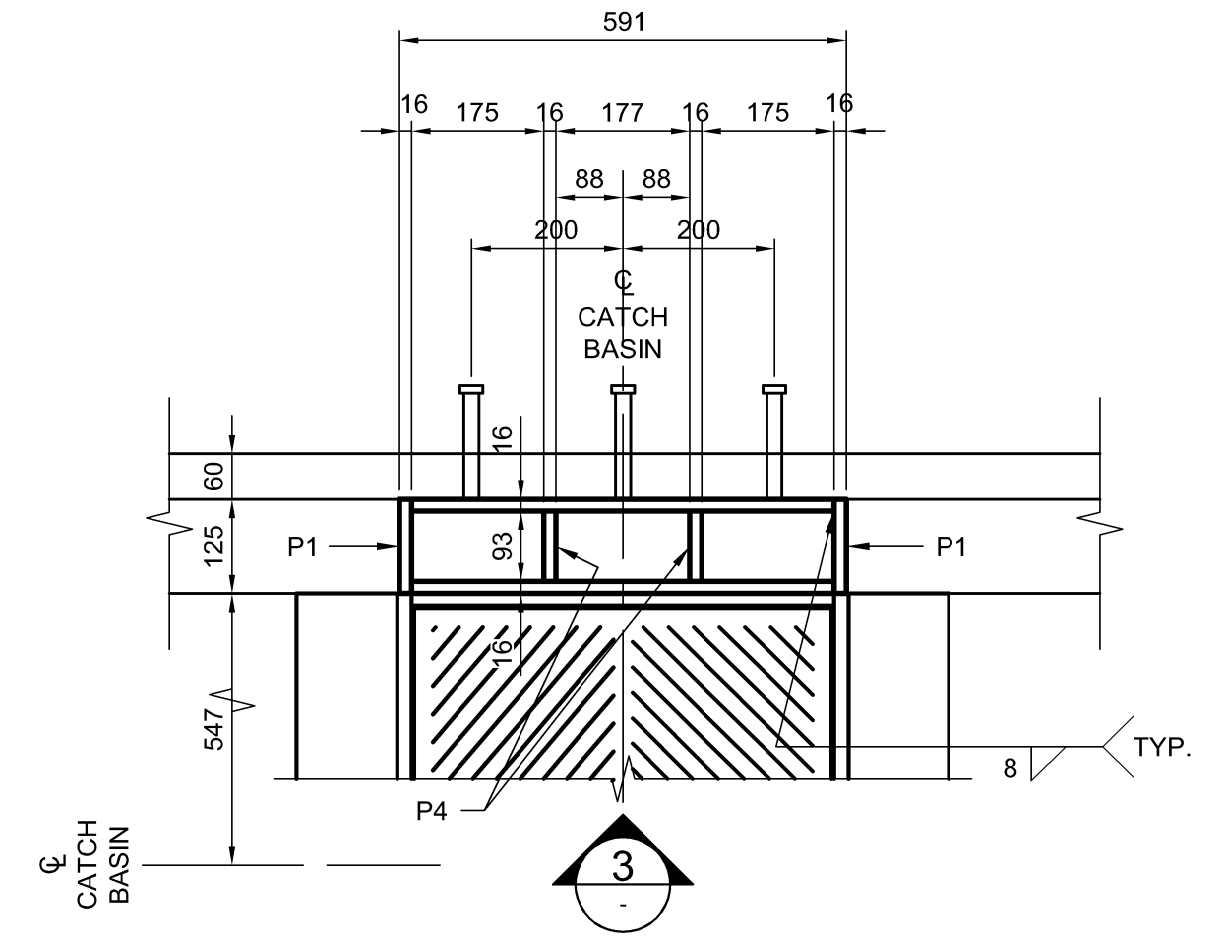
CB AND CP AT MEDIAN BARRIER



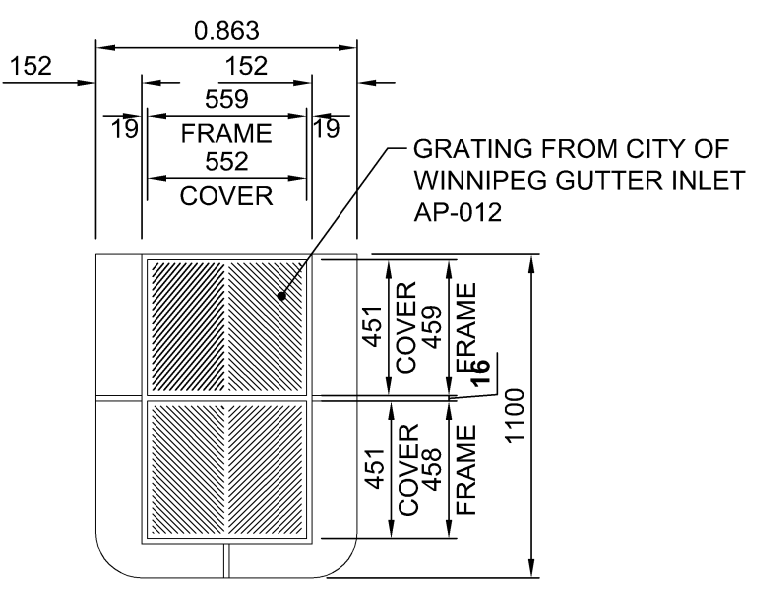
SECTION A 1:25 CATCHBASIN SHOWN CATCHPIT SIMILAR (NO SUMP)



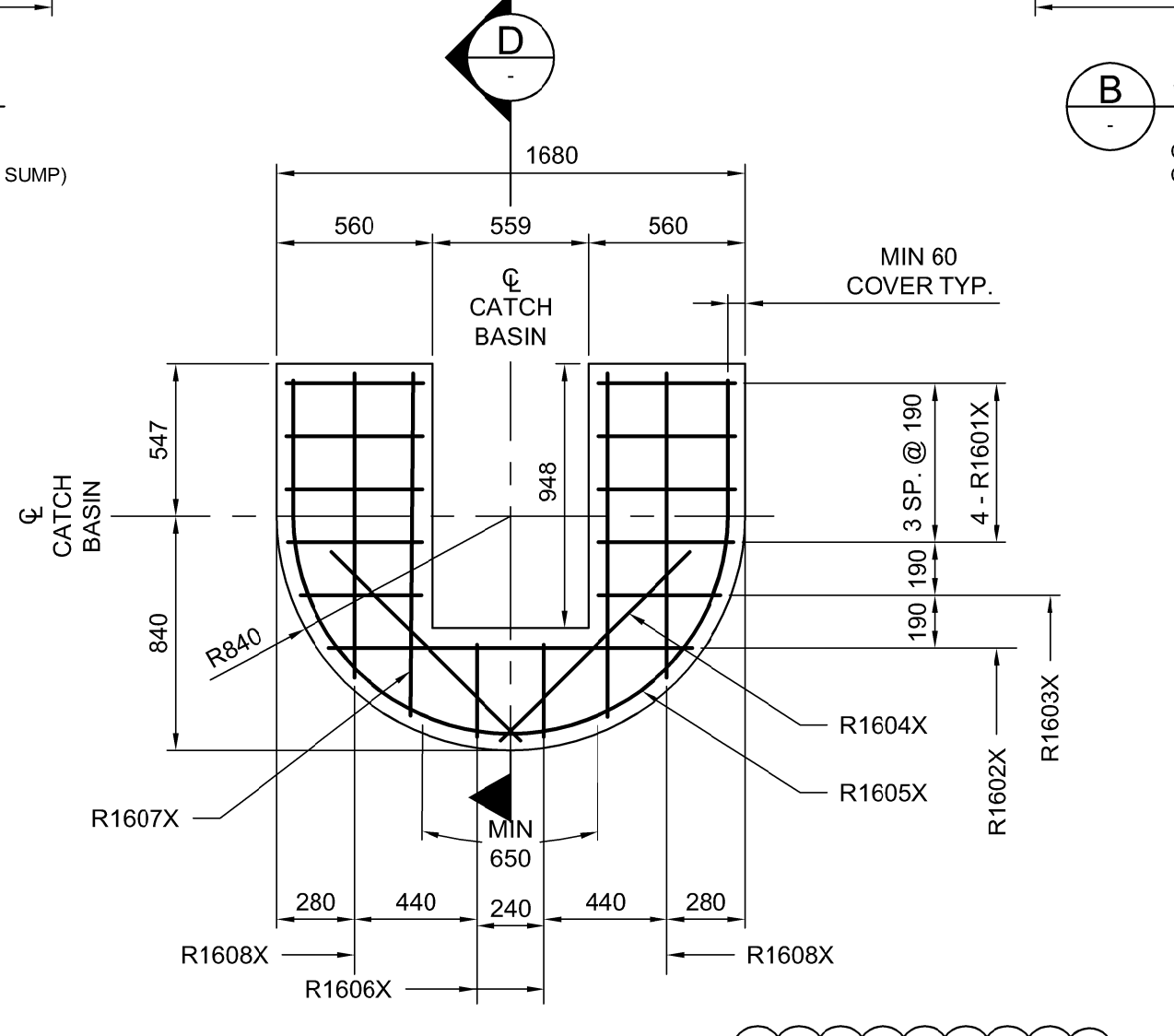
SECTION B 1:25 CATCHBASIN SHOWN CATCHPIT SIMILAR (NO SUMP)



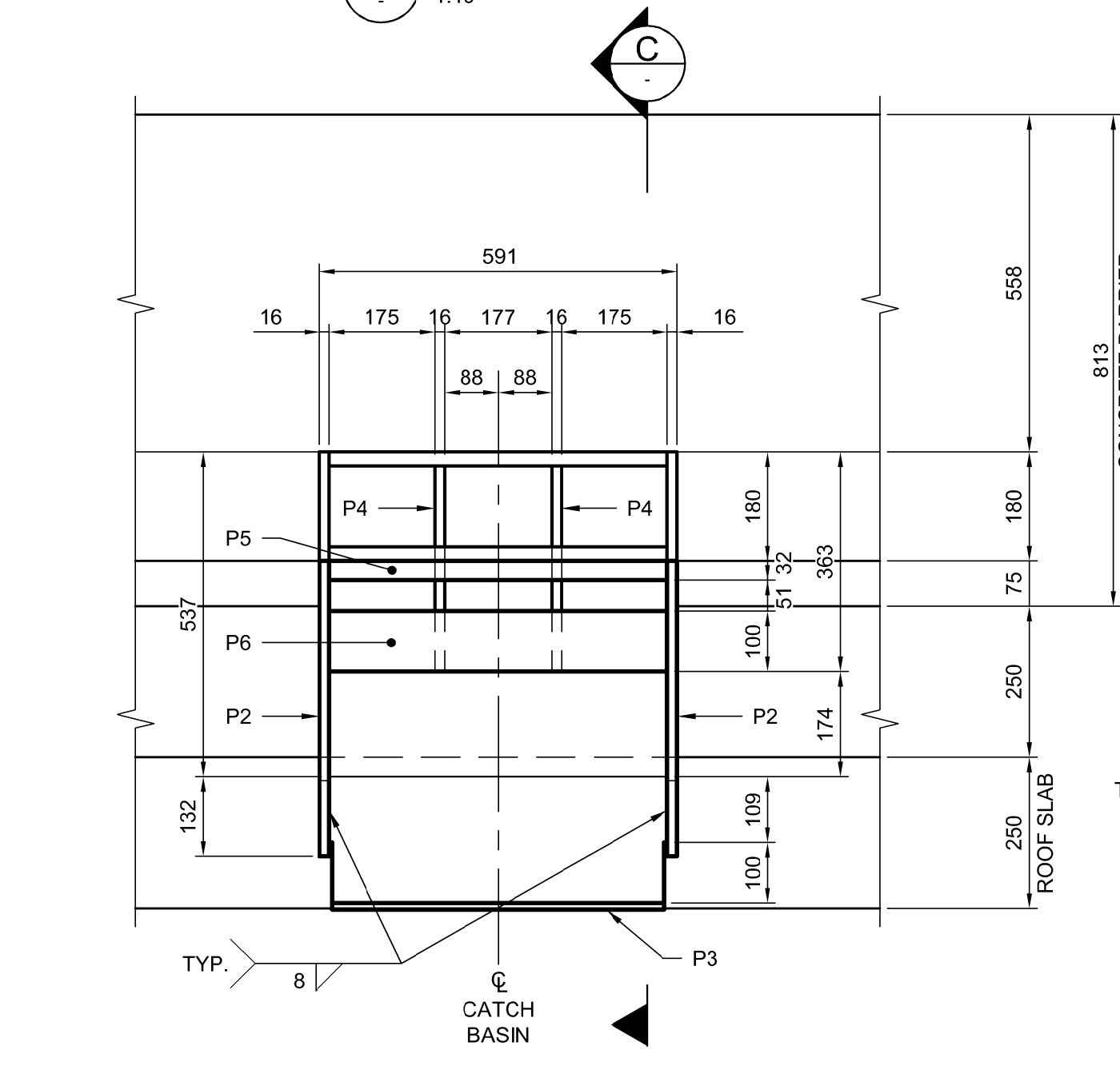
DETAIL 1 1:10



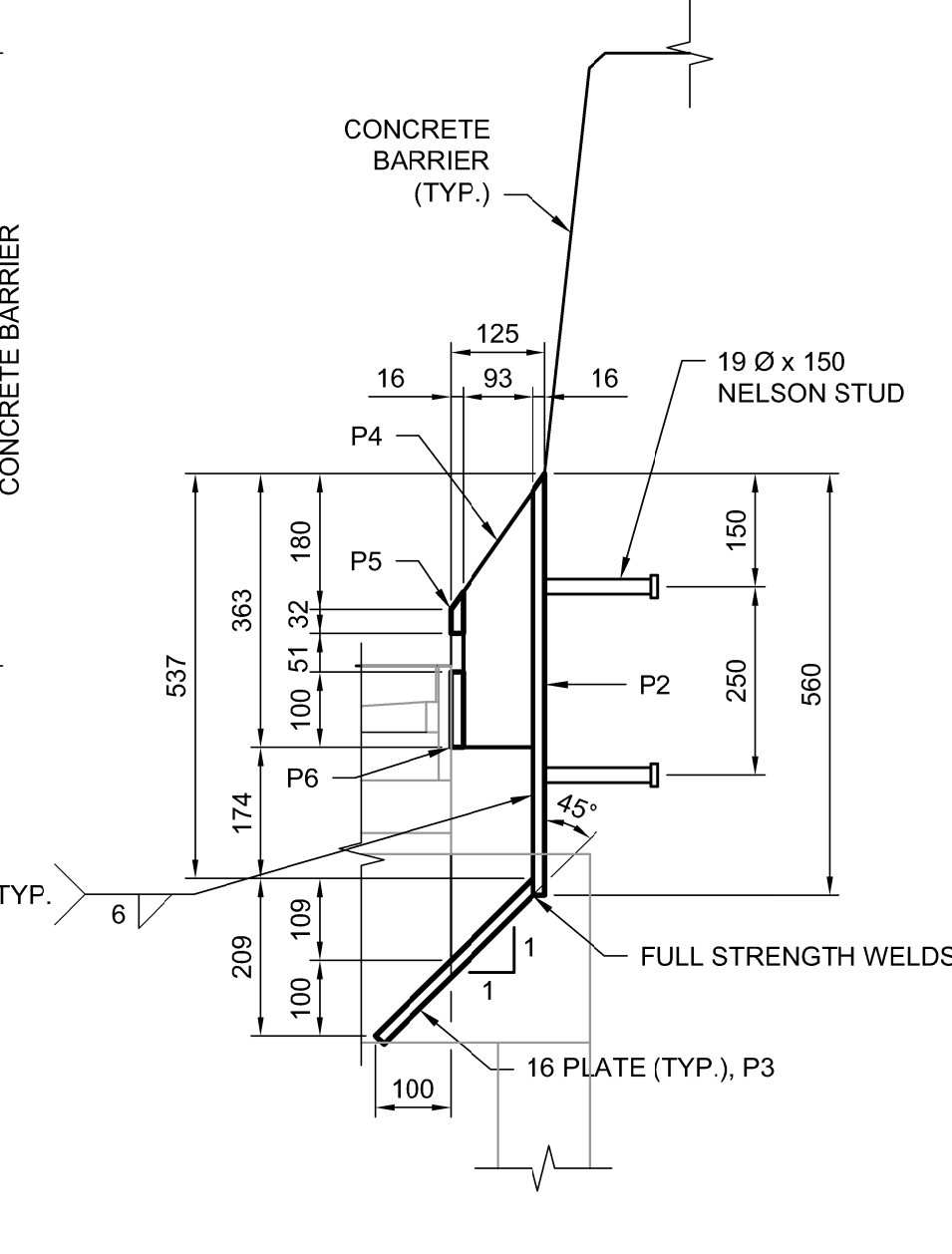
DETAIL 2 1:25



ROOF SLAB REINFORCING PLAN (8 REQUIRED) 1:25



ELEVATION 3 1:10



SECTION C 1:10

BARRIER INLET UNIT MK. "BU.1" (8 REQUIRED) 1

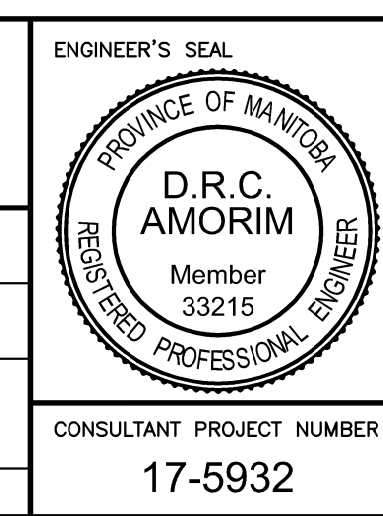
BILL OF MISCELLANEOUS METAL FOR BARRIER INLETS					
MARK	No.	DESCRIPTION	COMPONENT MASS (kg)	MASS PER UNIT (kg)	TOTAL MASS (kg)
BU.1	8	BARRIER INLET UNIT			823.20
		EACH UNIT TO BE FABRICATED FROM:			
		2 - P1 (AS DETAILED)	8.78	17.56	
		1 - P2 (AS DETAILED)	47.05	47.05	
		1 - P3 (AS DETAILED)	20.78	20.78	
		2 - P4 (AS DETAILED)	3.19	6.38	
		1 - P5 (AS DETAILED)	2.25	2.25	
		1 - P6 (AS DETAILED)	7.02	7.02	
		6 - 19Ø x 150 LG NELSON STUD	0.31	1.86	
					102.90
					TOTAL MASS (kg) 832.20

NOTE: ALL MATERIAL IN THE ABOVE BILL OF MISCELLANEOUS METAL SHALL BE GALVANIZED IN ACCORDANCE WITH ASTM A123 TO A NET RETENTION OF 610g/m² UNLESS NOTED OTHERWISE.

G:\CAD\175932\Drawings\Structural\BRIDGE-CON-CS-RETAINING WALL DETAILS_3.dwg



DESIGNED BY DRA		CHECKED BY SSR	
DRAWN BY CGC		APPROVED BY MBL	
HOR. SCALE AS SHOWN		RELEASED FOR CONSTRUCTION	
VERTICAL AS SHOWN		DATE 2018/02/09	



THE CITY OF WINNIPEG PUBLIC WORKS DEPARTMENT

Winnipeg

FERMOR AVENUE BRIDGE OVER SEINE RIVER
BRIDGE RE-HABILITATION, PEDESTRIAN-CYCLIST UNDERPASS STRUCTURE AND ROADWORKS FROM ST. ANNE'S ROAD TO ARCHIBALD STREET

CITY DRAWING NUMBER U-243-2017-CS-064
SHEET 064 OF 100
CONSULTANT DRAWING NUMBER CS-064

CONSULTANT PROJECT NUMBER 17-5932