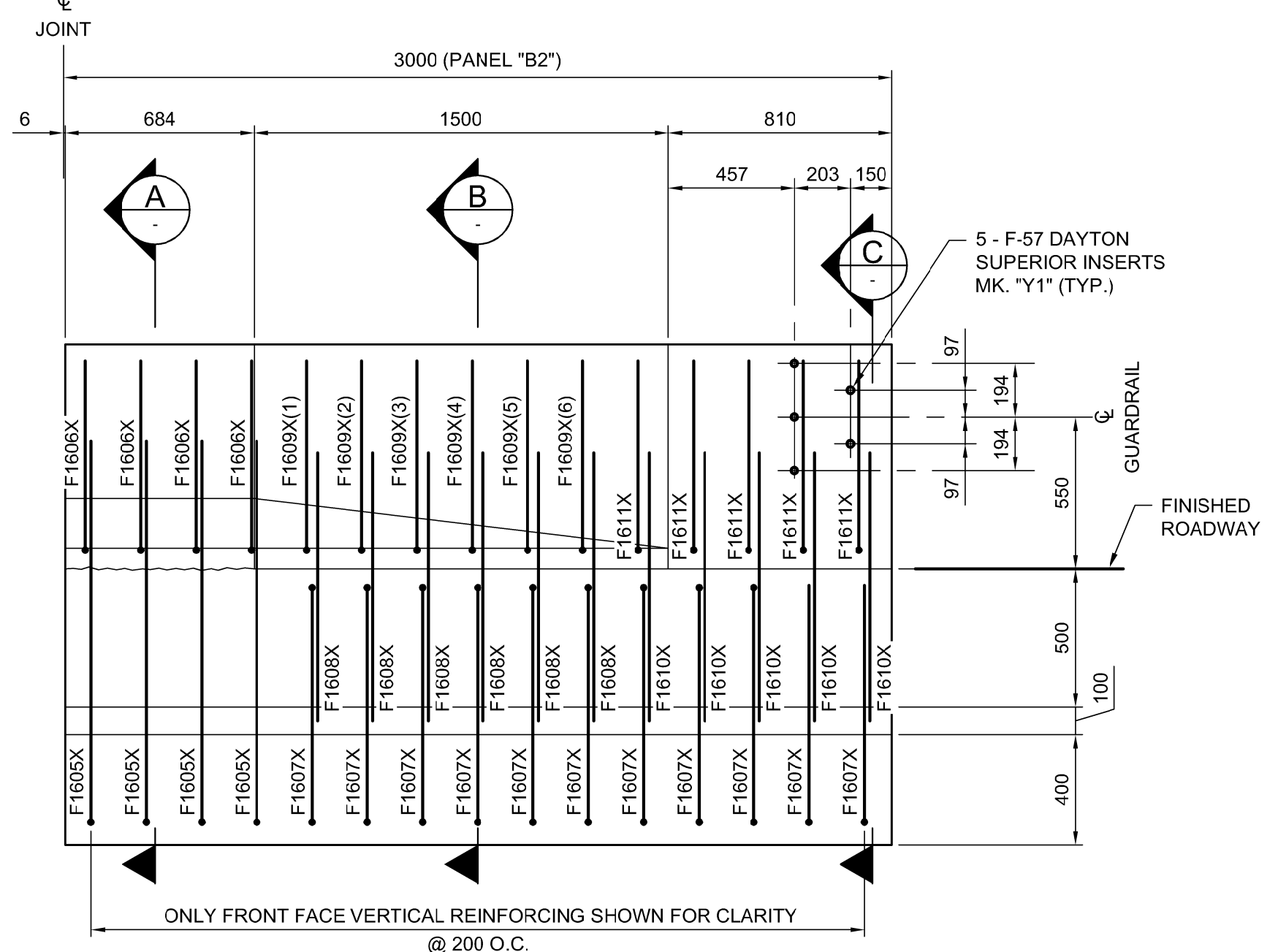
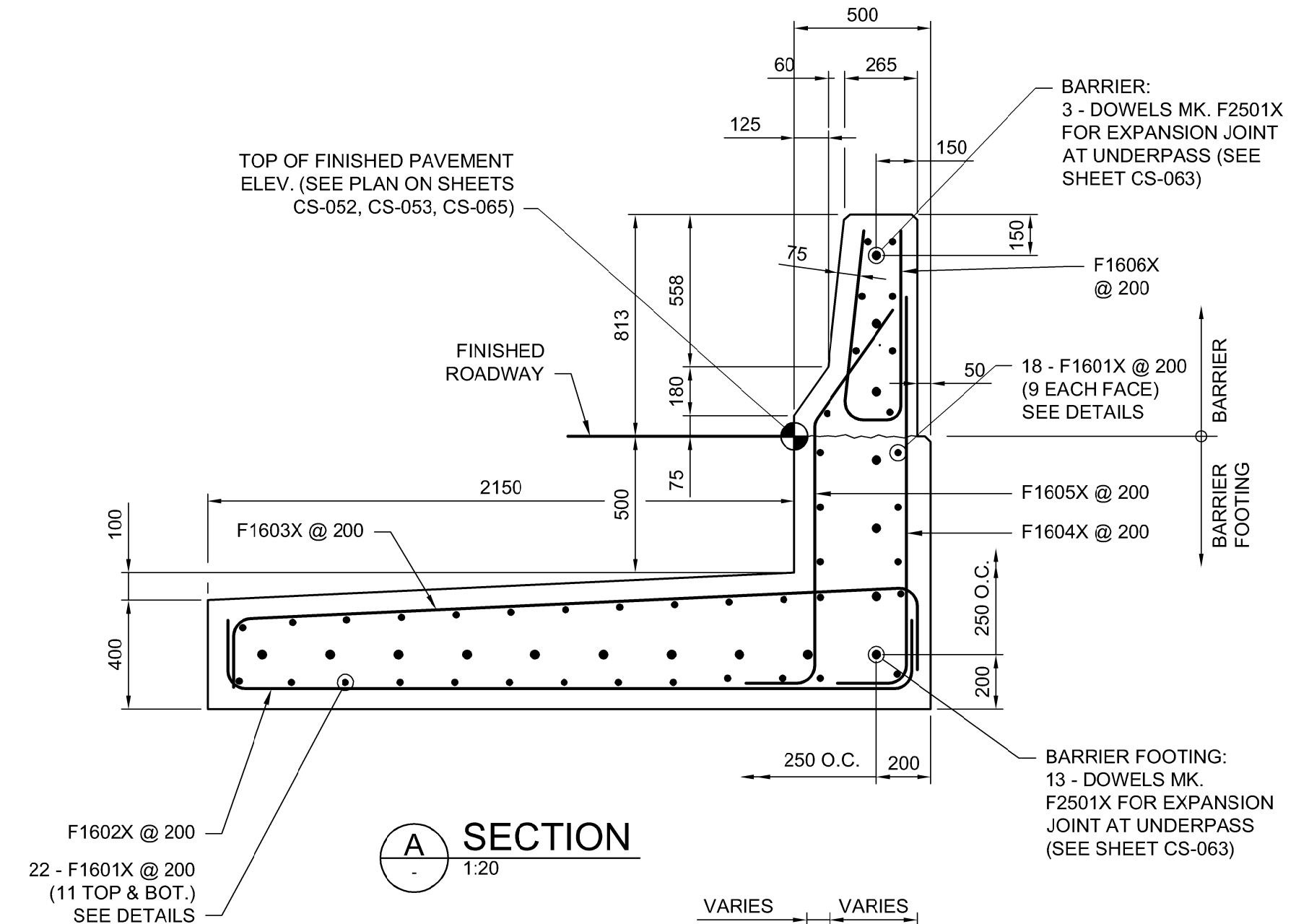


NOTE:  
SHOWING FOOTING  
REINFORCING ONLY

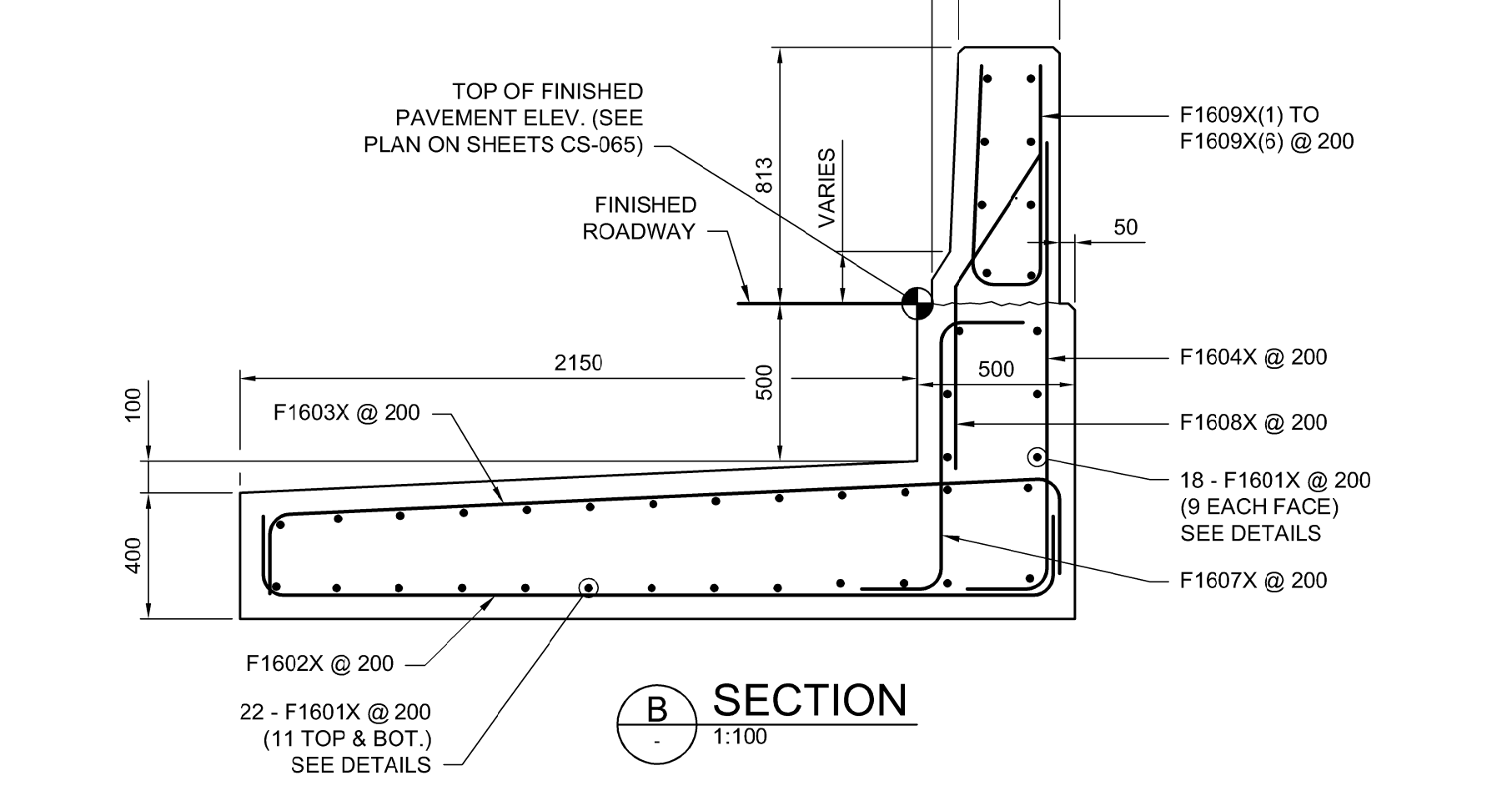
**BARRIER PANEL "B1" (23 REQUIRED)**  
1:20  
BARRIER PANEL "B1" SHOWN



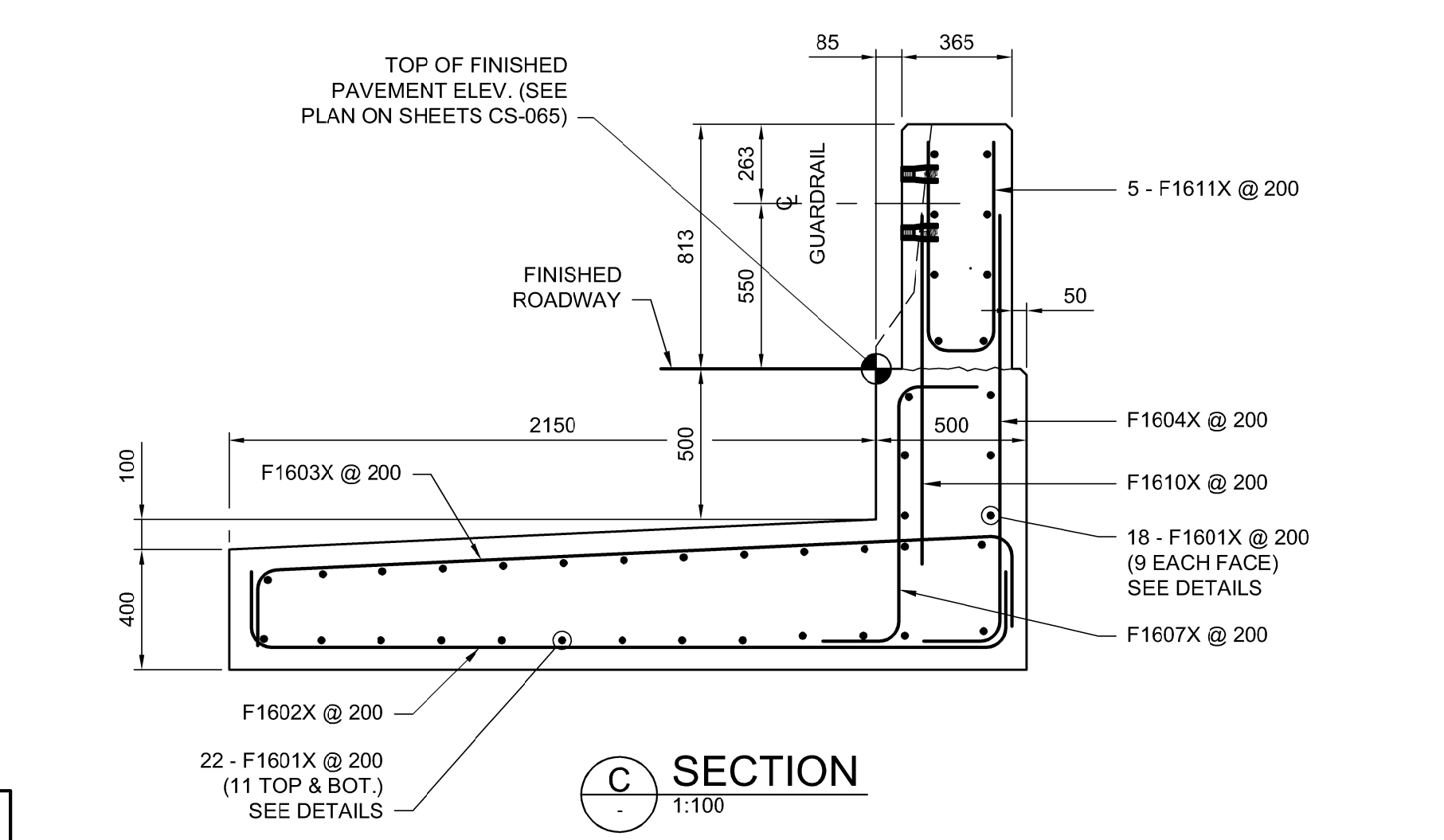
**BARRIER PANEL "B2" (3 REQUIRED)**  
1:20



**SECTION A**  
1:20



**SECTION B**  
1:100



**SECTION C**  
1:100

ROADWAY SHOULDER BARRIERS	
CONSTRUCTION JOINT DOWELS	
NO. OF JOINTS	REBAR DOWELS EACH JOINT
(25)	3 - M2501X SMOOTH DOWELS X 600 LG. IN BARRIER
(1)	13 - M2501X SMOOTH DOWELS X 600 LG. IN BARRIER FOOTING

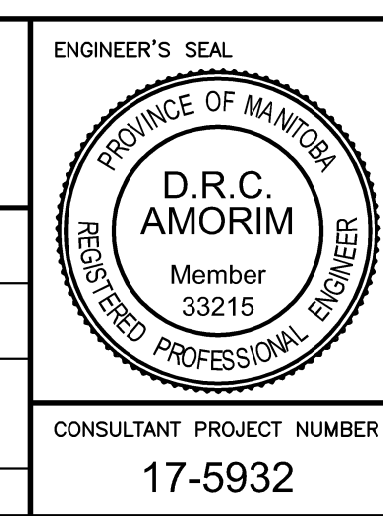
NOTE: SEE SECTION 'A' FOR DOWEL ARRANGEMENT.

- NOTES:**
- FOR SHOULDER BARRIER LAYOUT REFER TO ELEVATION ON SHEETS CS-052, CS-053 AND CS-068.
  - ALL EXPOSED EDGES TO BE CHAMFERED 20 mm UNLESS NOTED OTHERWISE.
  - FOR STANDARD JOINT DETAILS, REFER TO SHEET CS-063

BILL OF MISCELLANEOUS METAL FOR ROADWAY SHOULDER BARRIERS				
MARK	QTY	DESCRIPTION	UNIT MASS	TOTAL MASS
Y1	(15)	19 DIA. F-57 DAYTON SUPERIOR STAINLESS STEEL EXPANDED COIL FERRULE INSERT C/W 1 PLATE WASHER	0.38	5.70
			TOTAL MASS (kg) = 5.70	



DESIGNED BY				CHECKED BY			
DRA				SSR			
DRAWN BY				APPROVED BY			
CGC				MBL			
HOR. SCALE				RELEASED FOR CONSTRUCTION			
AS SHOWN							
VERTICAL SCALE				DATE			
AS SHOWN				2018/02/09			
NO.	REVISIONS	DATE	BY	DATE	BY	DATE	DATE
1	ADDENDUM #5	18/03/16	DRA				
0	ISSUED FOR TENDER	18/02/09	DRA				



**THE CITY OF WINNIPEG  
PUBLIC WORKS DEPARTMENT**

**FERMOR AVENUE BRIDGE OVER SEINE RIVER**  
BRIDGE RE-HABILITATION, PEDESTRIAN-CYCLIST UNDERPASS STRUCTURE AND ROADWORKS FROM ST. ANNE'S ROAD TO ARCHIBALD STREET

**ROADWAY SHOULDER BARRIER  
DETAILS 1 OF 2**

CITY DRAWING NUMBER: U-243-2017-CS-057  
SHEET: 057 OF 100  
CONSULTANT DRAWING NUMBER: CS-057

CONSULTANT PROJECT NUMBER: 17-5932

G:\CAD\175932\Drawings\Structural\BRIDGE\CON-CS-ROADSIDE BARRIER DETAILS 1.dwg