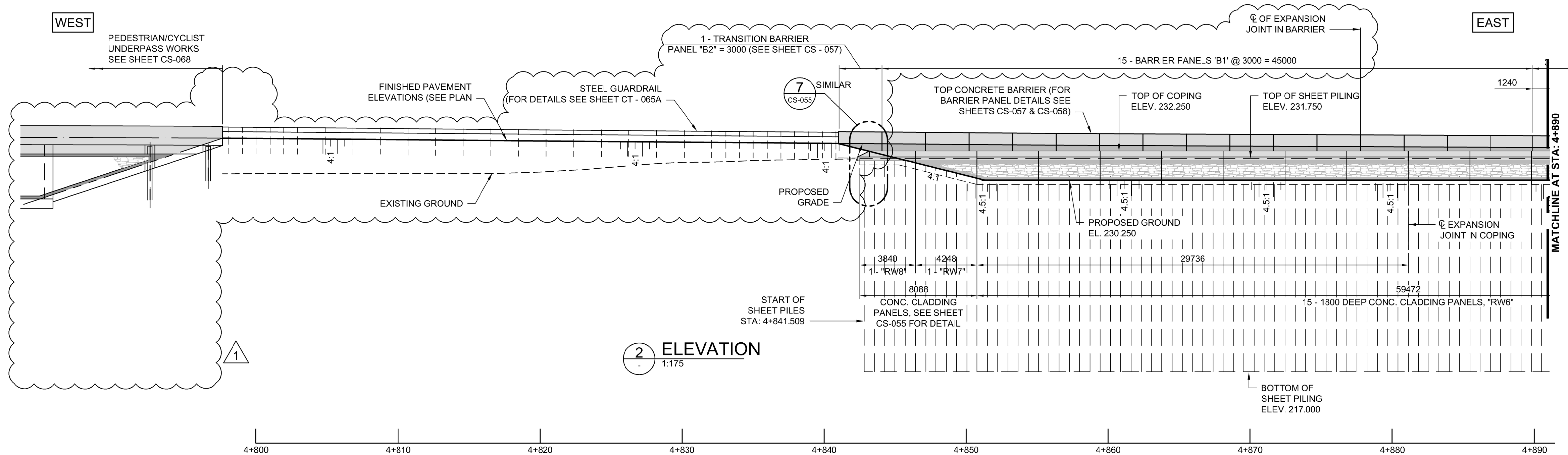
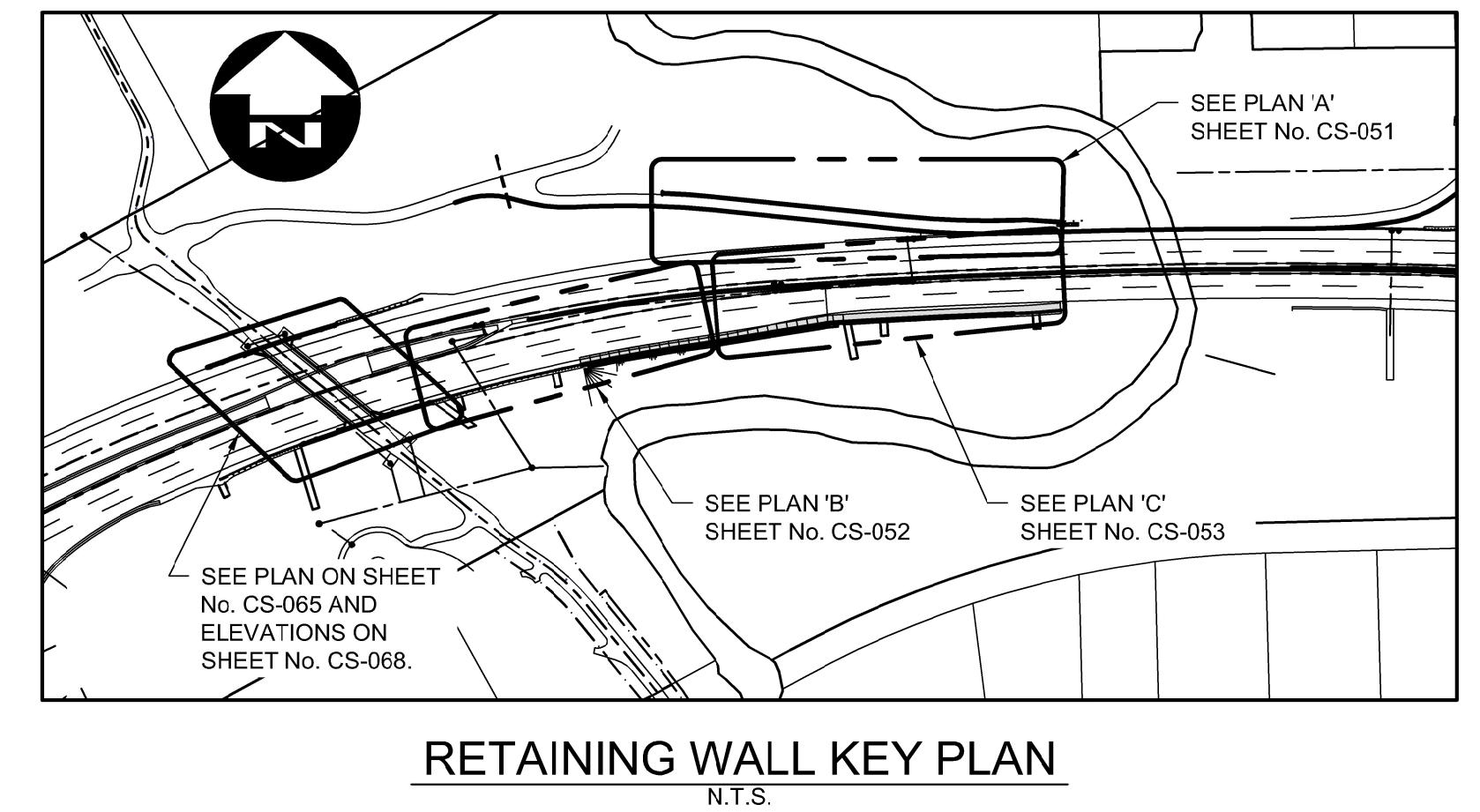
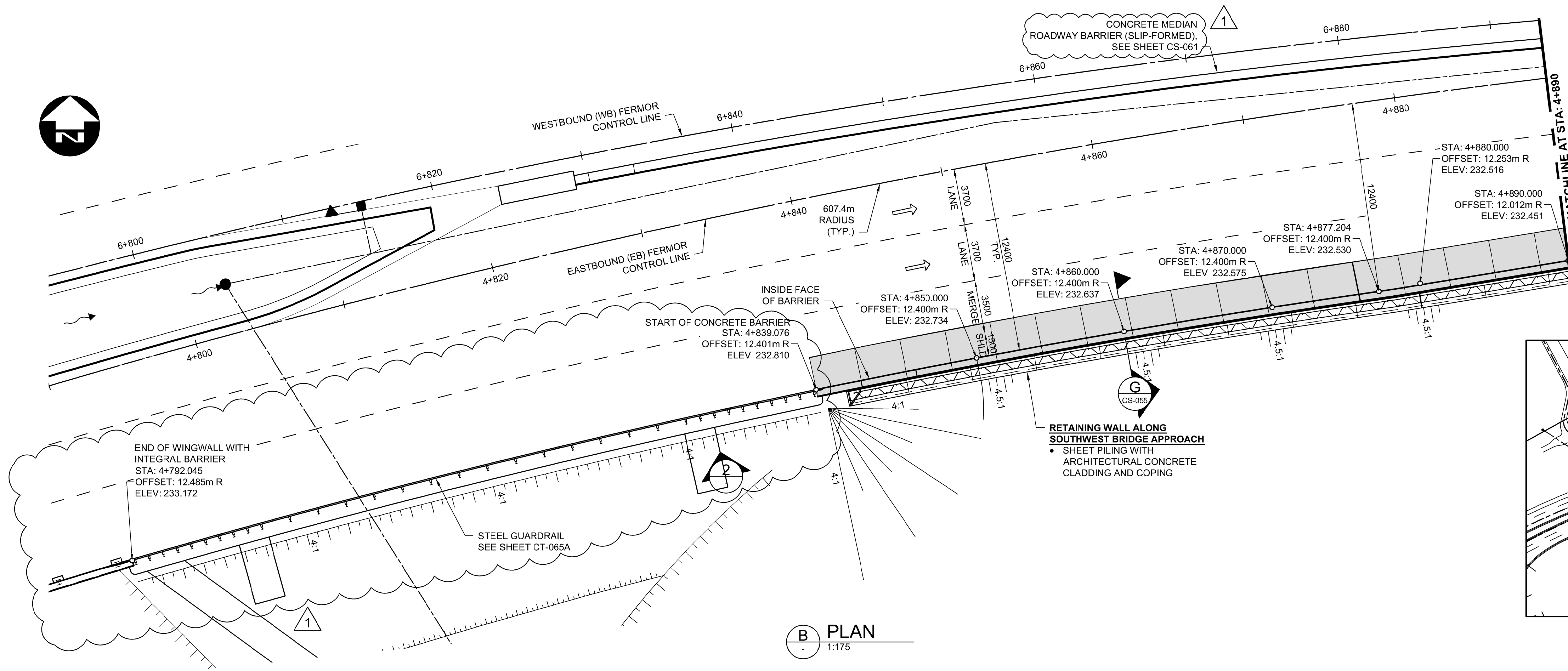


NOTES:

1. REFER SHEET No. CT-002 FOR CONTROL LINE GEOMETRY
2. REFER TO SHEET CT-053 AND CT-054 FOR TYPICAL ROAD CROSS SECTIONS.



G:\CAD\175932\Drawings\Structural\Bridges\CON-CS-RETAINING WALL_LAYOUT 2.dwg



NO.	REVISIONS	DATE	BY	DATE
1	ADDENDUM #5	18/03/16	DRA	
0	ISSUED FOR TENDER	18/02/09	DRA	

DESIGNED BY	DRA	CHECKED BY	SSR
DRAWN BY	CGC/DN	APPROVED BY	MBL
HOR. SCALE	AS SHOWN	RELEASED FOR CONSTRUCTION	
VERTICAL	AS SHOWN		
DATE	2018/02/09	DATE	

ENGINEER'S SEAL
PROVINCE OF MANITOBA
D.R.C. AMORIM
Member 33215
REGISTERED PROFESSIONAL ENGINEER
CONSULTANT PROJECT NUMBER
17-5932

THE CITY OF WINNIPEG
PUBLIC WORKS DEPARTMENT
Winnipeg
FERMOR AVENUE BRIDGE OVER SEINE RIVER
BRIDGE RE-HABILITATION, PEDESTRIAN-CYCLIST UNDERPASS STRUCTURE AND ROADWORKS FROM ST. ANNE'S ROAD TO ARCHIBALD STREET
CITY DRAWING NUMBER
U-243-2017-CS-052
SHEET 052 OF 100
CONSULTANT DRAWING NUMBER
CS-052
RETAINING WALL LAYOUT
EASTBOUND 1 OF 2