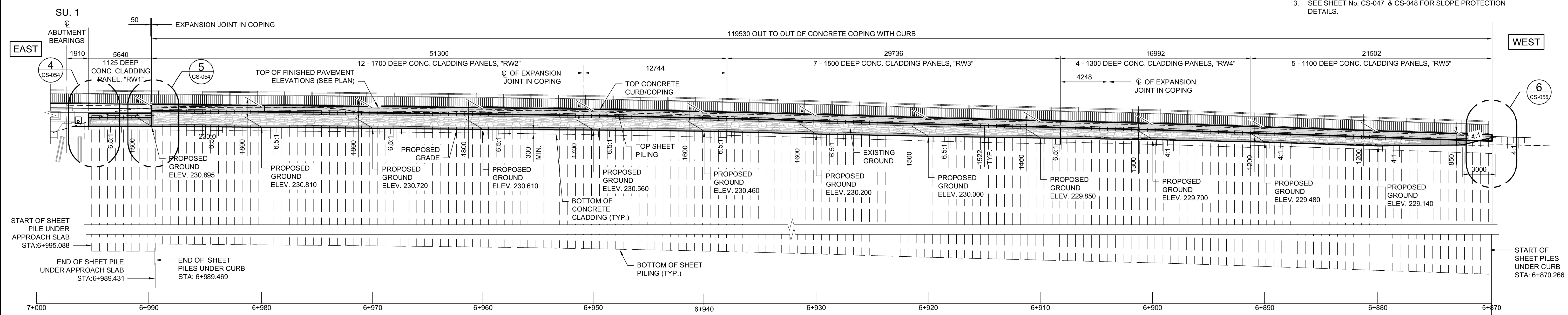


- NOTES:
- REFER SHEET No. CT-002 & CT-006 FOR CONTROL LINE GEOMETRY
 - REFER TO SHEET Nos. CT-053 AND CT-054 FOR TYPICAL ROAD CROSS SECTIONS.
 - SEE SHEET No. CS-047 & CS-048 FOR SLOPE PROTECTION DETAILS.



DESIGNED BY	DRA	CHECKED BY	SSR
DRAWN BY	CGC	APPROVED BY	MBL
HOR. SCALE	AS SHOWN	RELEASED FOR CONSTRUCTION	
VERTICAL	AS SHOWN		
NO. REVISIONS	DATE	BY	DATE
1	18/03/16	DRA	
0	18/02/09	DRA	
	2018/02/09		

ENGINEER'S SEAL

PROVINCE OF MANITOBA

D.R.C. AMORIM
Member
33215
REGISTERED PROFESSIONAL ENGINEER

CONSULTANT PROJECT NUMBER
17-5932

THE CITY OF WINNIPEG
PUBLIC WORKS DEPARTMENT

FERMOR AVENUE BRIDGE OVER SEINE RIVER
BRIDGE RE-HABILITATION, PEDESTRIAN-CYCLIST UNDERPASS STRUCTURE AND ROADWORKS FROM ST. ANNE'S ROAD TO ARCHIBALD STREET

CITY DRAWING NUMBER
U-243-2017-CS-051

SHEET
051 OF 100

CONSULTANT DRAWING NUMBER
CS-051

RETAINING WALL LAYOUT
WESTBOUND

G:\CAD\175932\Drawings\Structural\Bridges\CON-CO-RETAINING WALL LAYOUT 1.dwg