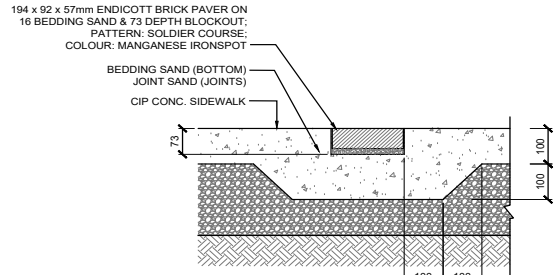
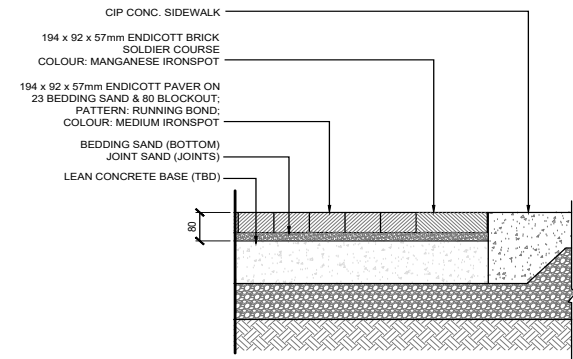


1 TYPICAL BIKE-PED ISLAND PAVING LAYOUT
LS-11 SCALE 1:100

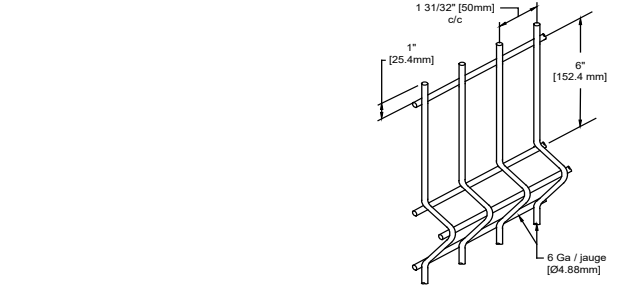


2 SIDEWALK INDICATOR STRIP
LS-11 SCALE 1:10

NOTE: SIDEWALK INDICATOR STRIP BLOCKOUTS MUST BE IN DIRECT AND CONTINUOUS ALIGNMENT WITH APPROACH INDICATOR STRIP BLOCKOUTS.



3 UNIT PAVERS IN CONC. BLOCKOUT - SIDEWALK
LS-11 SCALE 1:10

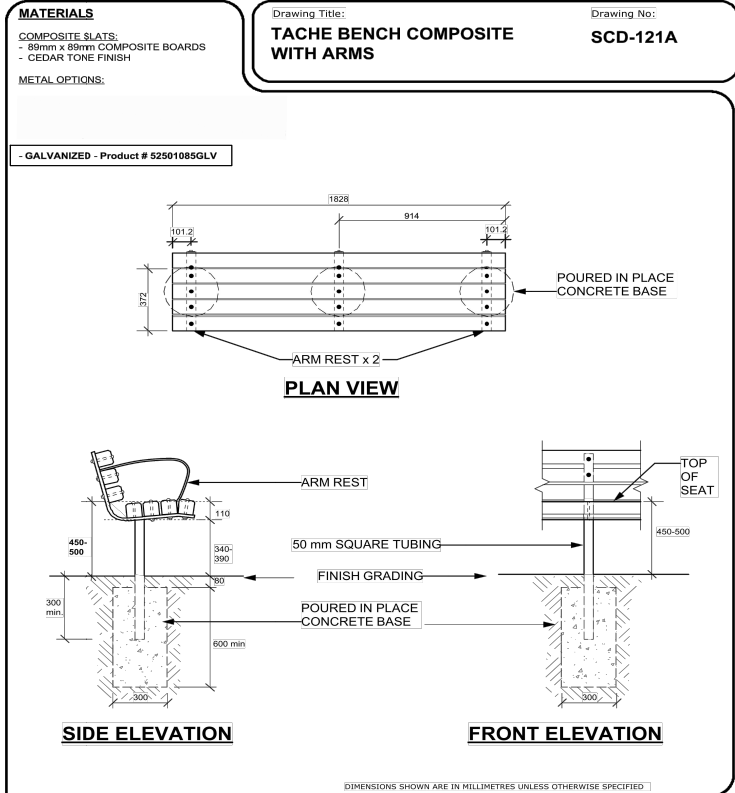


4 BARRIER FENCE
LS-11 SCALE NTS

OMEGA ECO PANELS MOUNTED ON SQUARE POSTS (HEIGHT 1245mm H)

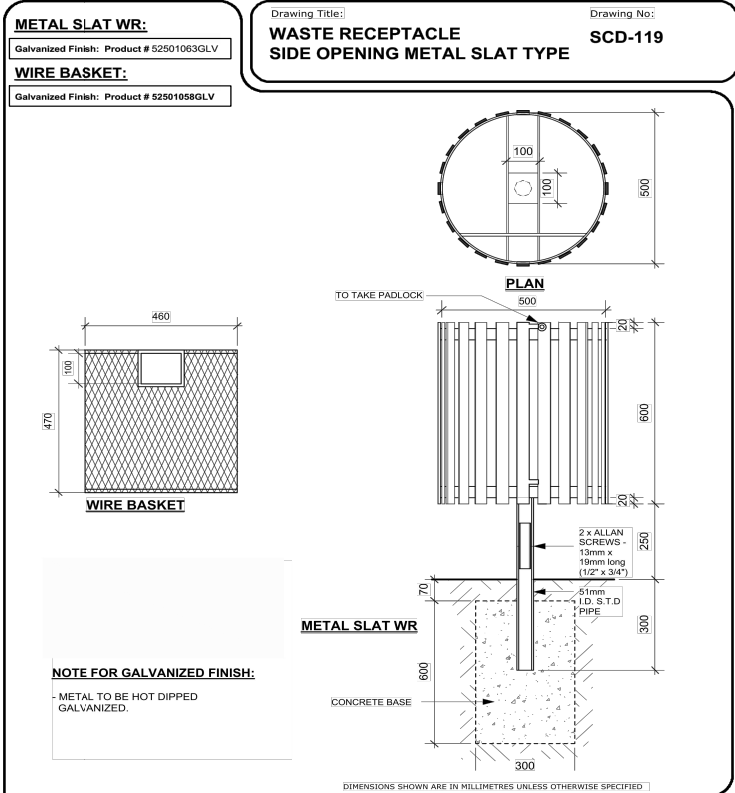
PANEL HEIGHT	NUMBER OF FOLDS PER PANEL	NUMBER OF ANGLE BRACKET KITS PER SECTION
1245 mm (41")	2	8

OMEGA ECO PANELS AVAILABLE THRU OMEGA II Fence Systems
Head office: 1735 St-Etienne Blvd. West, Laval (Quebec) Canada H7L 3N6
Phone: 1 800 836 6342 / 450 686-9600.
E-mail: customerservice@omegawo.com



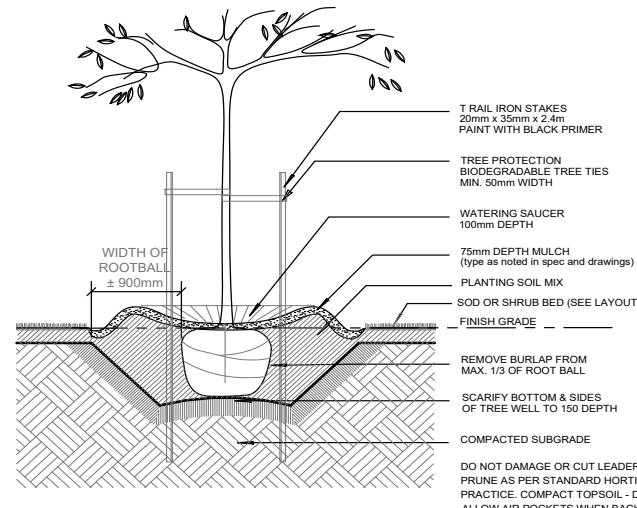
5 BENCH
LS-11 SCALE NTS

The City of Winnipeg
Planning, Property and Development Department
Planning and Land Use Division
Unit 15 - 30 Fort Street, Winnipeg, MB, R3C 4X5

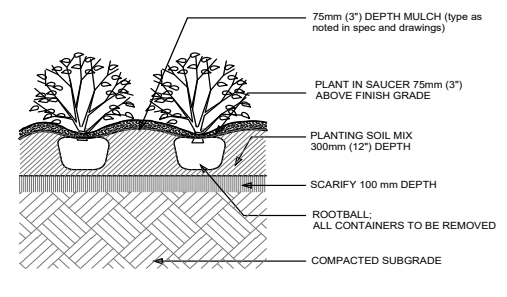


6 WASTE RECEPTACLE
LS-11 SCALE NTS

The City of Winnipeg
Planning, Property and Development Department
Planning and Land Use Division
Unit 15 - 30 Fort Street, Winnipeg, MB, R3C 4X5



7 DECIDUOUS TREE PLANTING
LS-11 SCALE NTS



8 TYPICAL SHRUB PLANTING
LS-11 SCALE NTS

UNDERGROUND STRUCTURES

SUPV. U/G STRUCTURES	DATE

LOCATION OF UNDERGROUND STRUCTURES AS SHOWN ARE BASED ON THE BEST INFORMATION AVAILABLE, BUT NO GUARANTEE IS GIVEN THAT ALL EXISTING UTILITIES ARE SHOWN OR THAT THE GIVEN LOCATIONS ARE EXACT. CONFIRMATION OF EXISTENCE AND EXACT LOCATION OF ALL SERVICES MUST BE OBTAINED FROM THE INDIVIDUAL UTILITIES BEFORE PROCEEDING WITH CONSTRUCTION.

B.M. ELEV.	DESIGNED BY	DRAWN BY	CHECKED BY	APPROVED BY

NO.	REVISIONS	DATE	BY
1	ADDENDUM #3	18/03/02	GM
0	ISSUED FOR TENDER	18/02/09	GM

DESIGNED BY: -
DRAWN BY: -
CHECKED BY: -
APPROVED BY: -

HOR. SCALE: AS NOTED
VERTICAL: -

RELEASED FOR CONSTRUCTION: -
DATE: -

ENGINEER'S SEAL: -
CONSULTANT PROJECT NUMBER: 17-5932

THE CITY OF WINNIPEG
PUBLIC WORKS DEPARTMENT

FERMOR AVENUE BRIDGE OVER SEINE RIVER
BRIDGE REHABILITATION, PEDESTRIAN-CYCLIST UNDERPASS STRUCTURE AND ROADWORKS FROM ST. ANNE'S ROAD TO ARCHBALD STREET

CITY DRAWING NUMBER: P-3489-2017-LS-11
SHEET 11 OF 11
CONSULTANT DRAWING NUMBER: LS-11

LANDSCAPE DETAILS