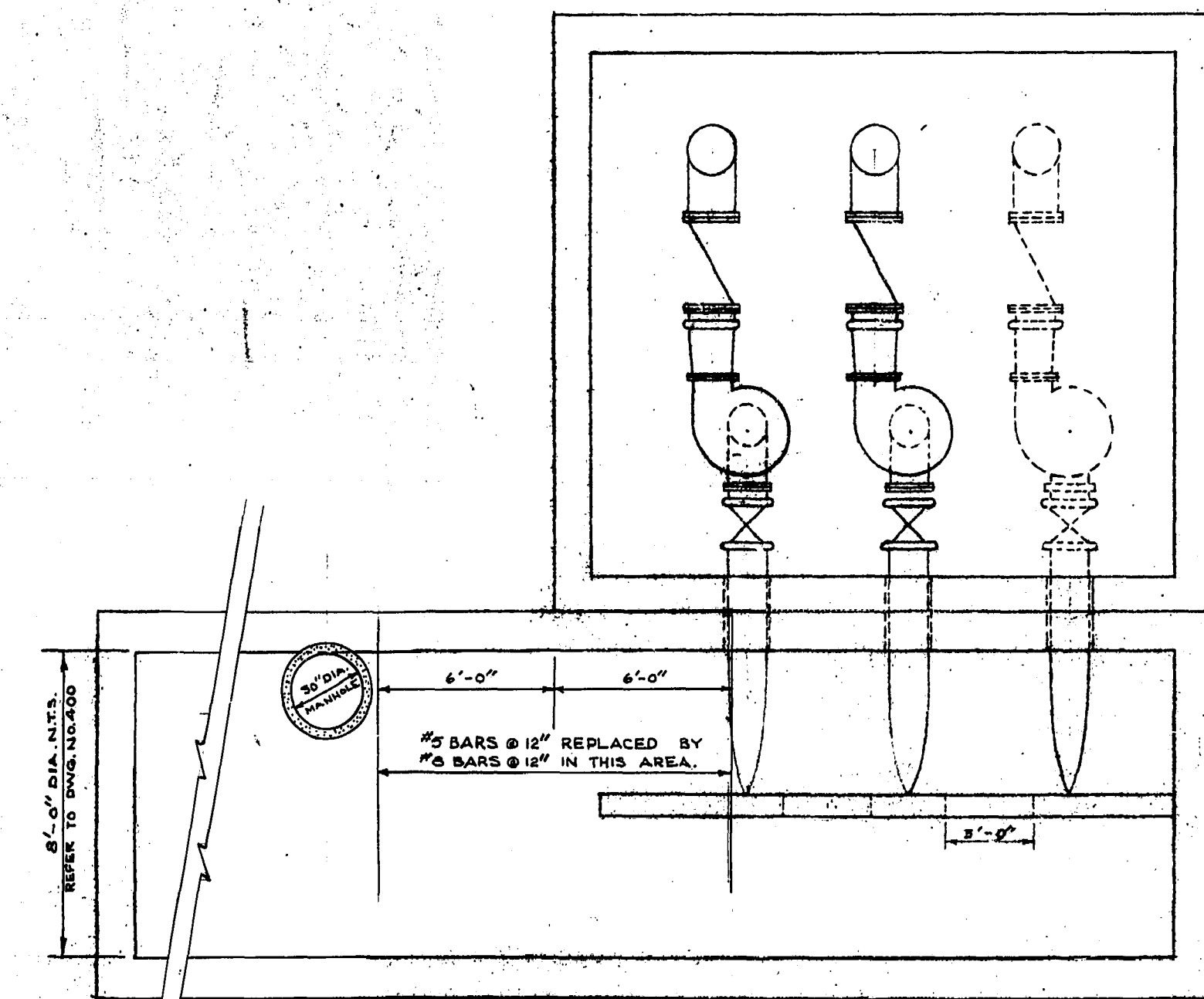
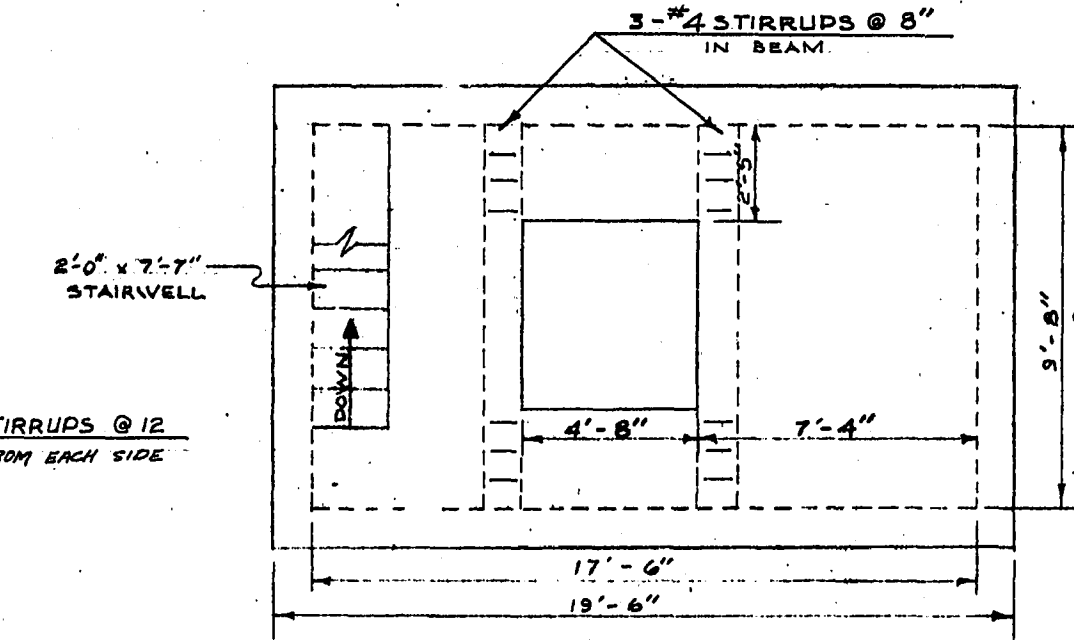


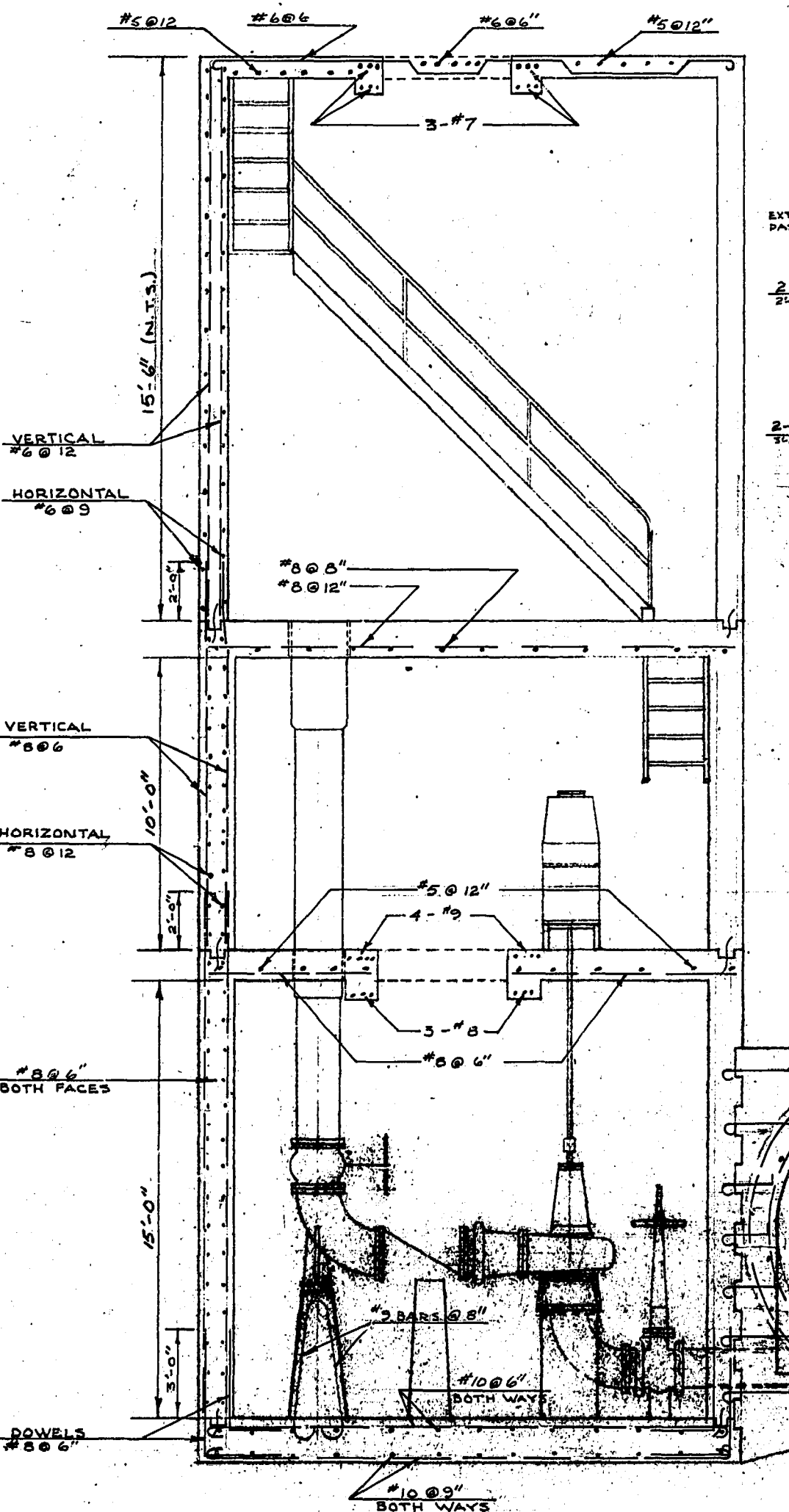
PLAN OF MOTOR ROOM FLOOR & SUMP LOCATION



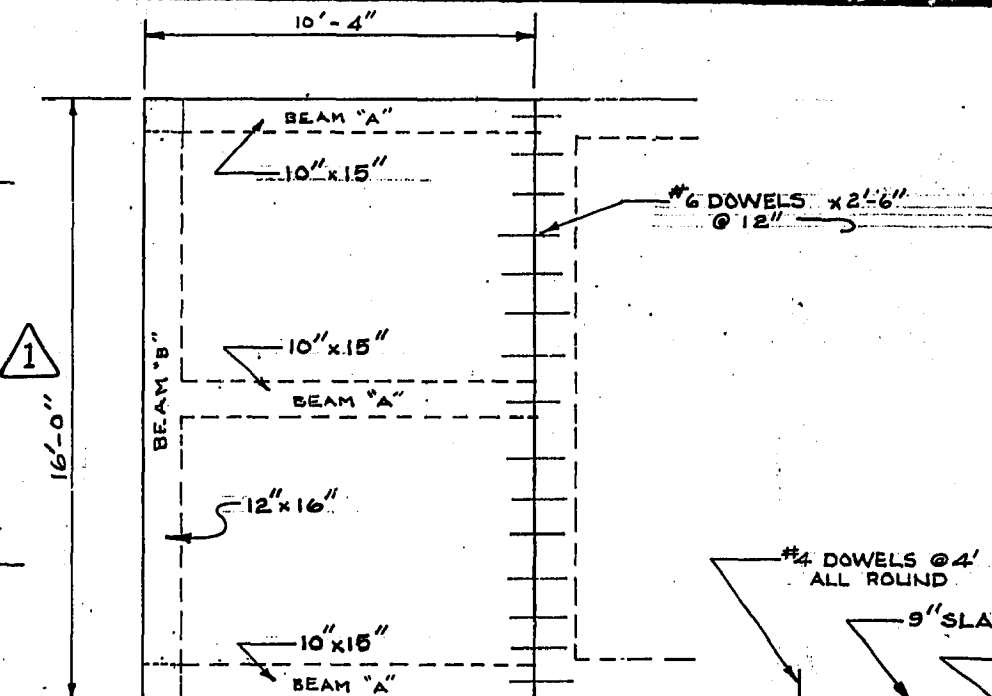
PLAN OF SUMP AND PUMP ROOM FLOOR



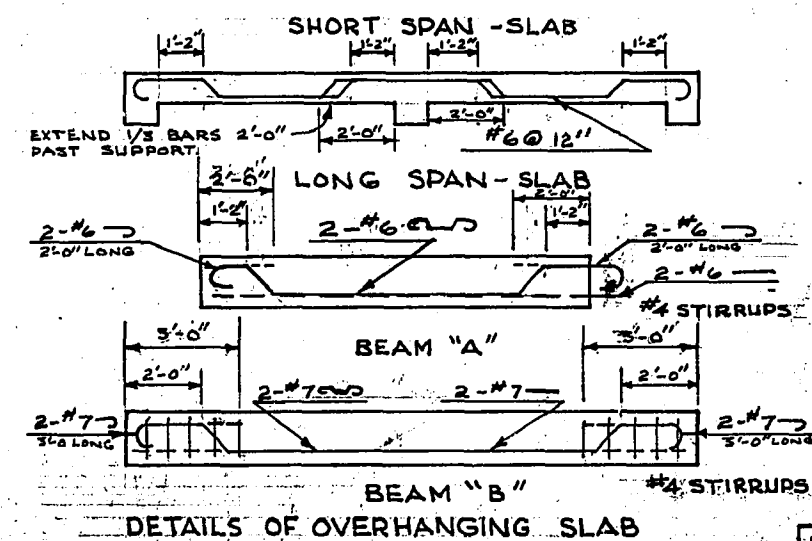
PLAN OF STA. ACCESS



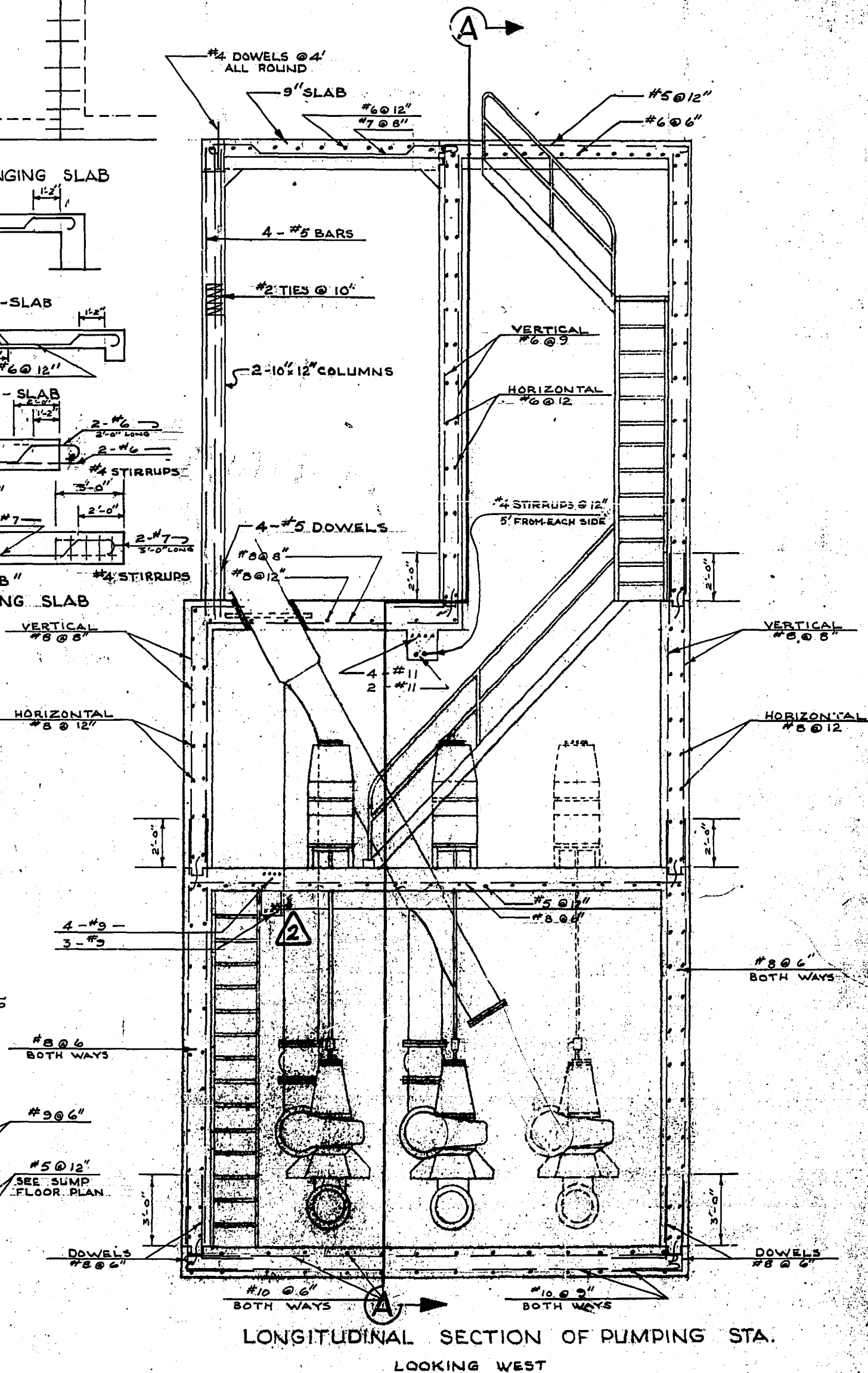
SEC. A-A THRU PUMPING STA. AND SUMP
LOOKING NORTH



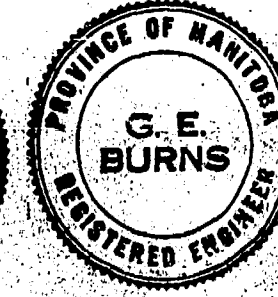
PLAN OF OVERHANGING SLAB



DETAILS OF OVERHANGING SLAB



LONGITUDINAL SECTION OF PUMPING STA.
LOOKING WEST



REVISIONS			
NO.	DESCRIPTION	DATE	BY
1	DIM. REVISED (18/10/11)	AUG 24/11	KIR
2	SEAM TANKS AT ALL DOWNS ADD.	AUG 24/11	KIR
3			
4			
5			
6			
7			
8			

THE METROPOLITAN CORPORATION OF GREATER WINNIPEG
WATERWORKS & WASTE DISPOSAL DIVISION
 SEWAGE DISPOSAL BRANCH

CHARLESWOOD INTERCEPTOR
 REINFORCING DETAILS FOR PUMPING STATION
 AT COMMUNITY ROW & ROBLIN BLVD.

DRAWING NO. **400A**