

**PUMPING REQUIREMENTS**

FROM "A" - GATE CHAMBER TO "C" - SPECIAL MANHOLE  
 REQUIRED PUMPING CAPACITY - 400 LITRES/SECOND  
 MAXIMUM ALLOWABLE WATER LEVEL AT "A" UNDER PEAK HOUR DRY WEATHER FLOW CONDITIONS - ELEV. 230.6 m

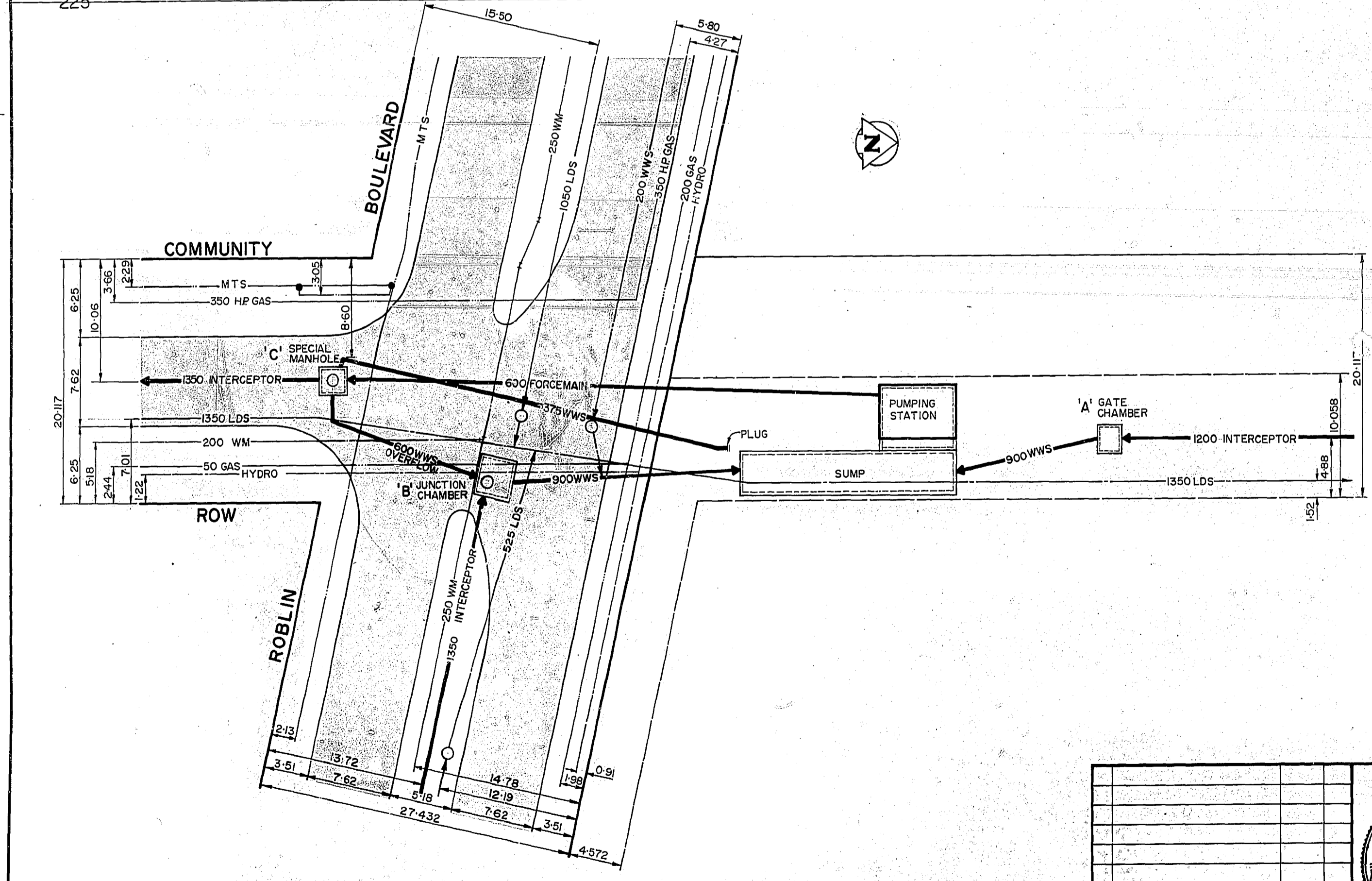
FROM "B" - JUNCTION CHAMBER TO "C" - SPECIAL MANHOLE  
 REQUIRED PUMPING CAPACITY - 67 LITRES/SECOND  
 MAXIMUM ALLOWABLE WATER LEVEL AT "B" UNDER PEAK HOUR DRY WEATHER FLOW CONDITIONS - ELEV. 228.8 m

**GENERAL INFORMATION**

AT "A" - GATE CHAMBER  
 AVERAGE DRY WEATHER FLOW - 223 LITRES/SECOND  
 PEAK HOUR DRY WEATHER FLOW - 400 LITRES/SECOND

AT "B" - JUNCTION CHAMBER  
 AVERAGE DRY WEATHER FLOW - 67 LITRES/SECOND  
 PEAK HOUR DRY WEATHER FLOW - 133 LITRES/SECOND

AT "C" - SPECIAL MANHOLE  
 NORMAL WATER LEVEL - ELEV. 232.9

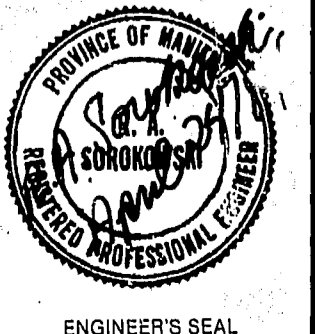


**AS-CONSTRUCTED**  
 D.K. S. [Signature] 09 25  
 SURVEY ENGINEERING DATE  
 WATERWORKS, WASTE & DISPOSAL DEPARTMENT

**METRIC**  
 - WHOLE NUMBERS INDICATE MILLIMETRES - DECIMALIZED NUMBERS INDICATE METRES

INTERSECTION OF COMMUNITY ROW AND ROBLIN BOULEVARD  
 SCALE: HORIZ. 1:250  
 VERT. 1:50

NO.	REVISIONS	DATE	APP.



**WORKS & OPERATIONS DIVISION**  
 WATERWORKS, WASTE & DISPOSAL DEPARTMENT

DESIGNED BY: GN  
 DRAWN BY: TM  
 CHECKED BY: [Signature]  
 DATE: MARCH 15 1984  
 APPROVED BY: [Signature]  
 DATE: APR 27/84



**COMMUNITY ROW PUMPING STATION**  
 TEMPORARY PUMPING

RELEASED FOR CONSTRUCTION: [Signature]  
 DATE: APRIL 27/84  
 SCALE: AS NOTED  
 DRAWING NO.: 1125