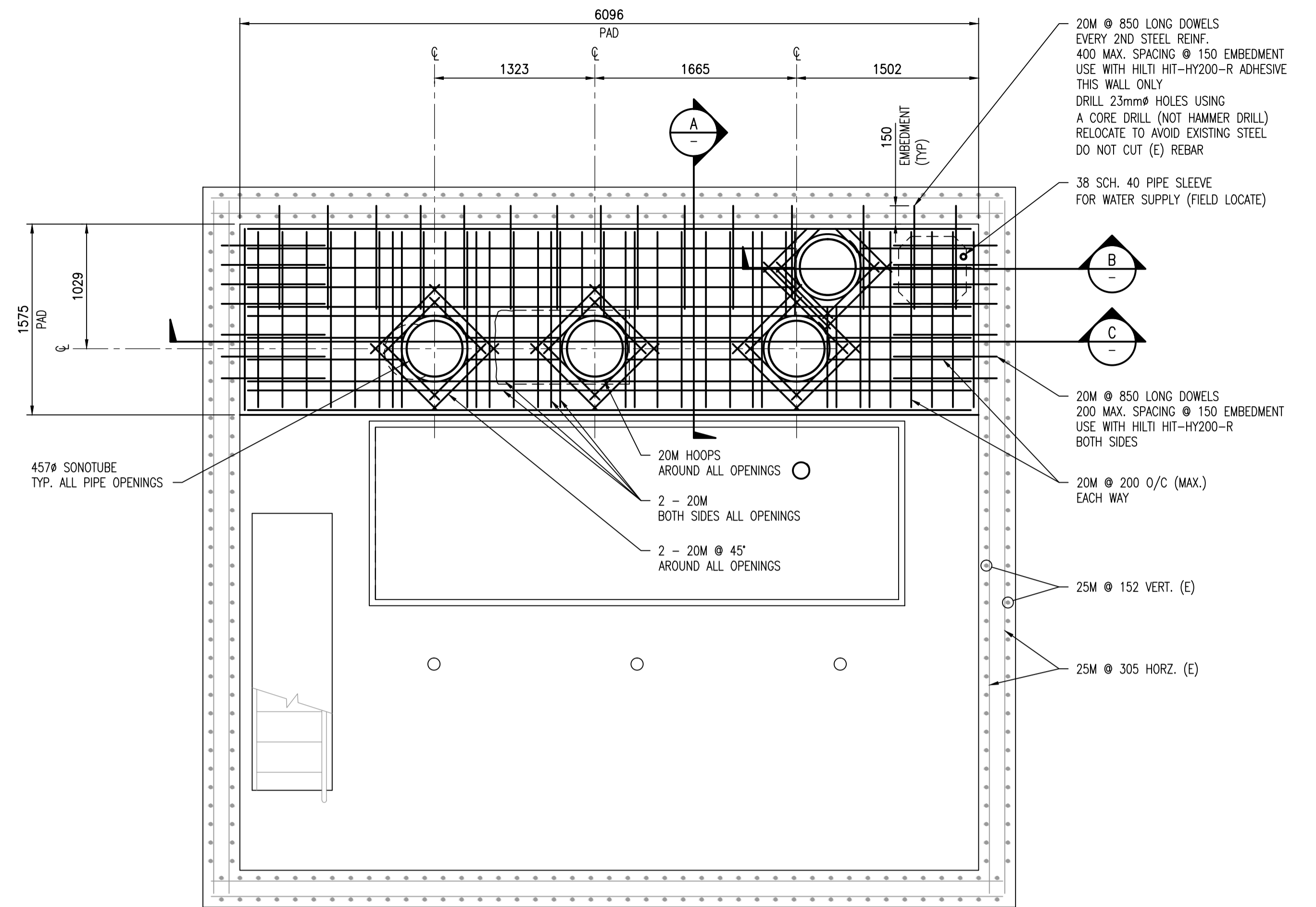


**MOTOR ROOM FLOOR PLAN**

1 : 30 EXISTING CONDITIONS

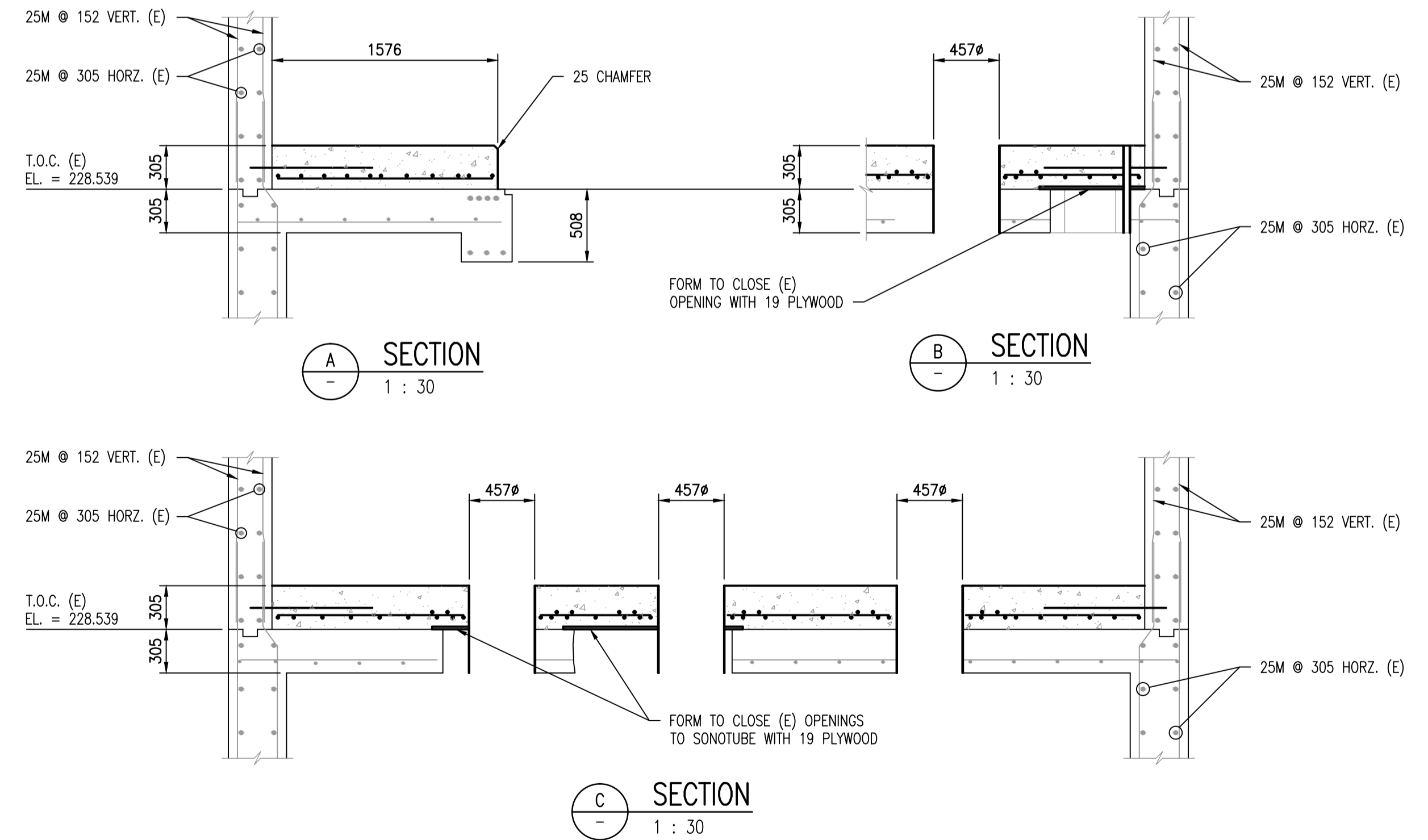


**MOTOR ROOM FLOOR PLAN**

1 : 30 NEW CONCRETE DIAPHRAGM

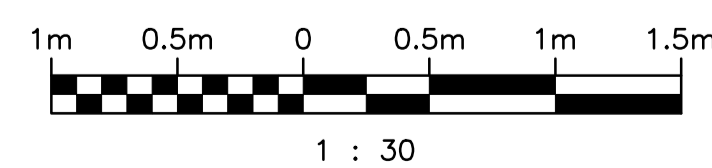
**CONSTRUCTION SEQUENCE:**

- 1 INSTALL DOWELS.
- 2 PLACE REINFORCING.
- 3 CONSTRUCT FORMWORK SUCH THAT DISUSED OPENINGS ARE COVERED AND REQUIRED OPENINGS FOR NEW PIPES ARE ACCOMMODATED.
- 4 DO NOT SAWCUT PIPE OPENINGS THROUGH EXISTING FLOOR UNTIL THE NEW FLOOR DIAPHRAGM HAS CURED FOR 21 DAYS.
- 5 NEATLY CONSTRUCT/ENLARGE OPENINGS AS SHOWN.
- 6 ENSURE THAT ALL REBAR EXPOSED BY SAWCUTTING IS TREATED WITH EPOXY PAINT.
- 7 DO NOT OVERCUT CORNERS.



DRAWING NUMBER	REFERENCE DRAWINGS
S-281	COMMUNITY ROW PUMPING STATION - INSTALLATION OF NEW PUMPS AND PIPING
1106	COMMUNITY ROW PUMPING STATION - INSTALLATION OF NEW PUMPS AND PIPING
400B	CHARLESWOOD INTERCEPTOR PUMPING STATION AT COMMUNITY ROW & ROBLIN BLVD.
400A	CHARLESWOOD INTERCEPTOR REINFORCING DETAILS FOR PUMPING STATION
1-0130L-M0004	PUMPING STATION UPGRADES - MOTOR & PUMP ROOM NEW WORK - SECTIONS
1-0130L-M0003	PUMPING STATION UPGRADES - MOTOR & PUMP ROOM NEW WORK - PLANS
1-0130L-S0002	PUMPING STATION UPGRADES - NOTES SHEET 2
1-0130L-S0001	PUMPING STATION UPGRADES - NOTES SHEET 1

PROJECT SPECIFIC



NO.	REVISIONS	DATE	DESIGN	CHECK
00	ISSUED FOR TENDER, BID OPP. 639-2017	2017-07-25	TD	BJC

		SNC-LAVALIN INC. 148 Nature Park Way Winnipeg, MB, Canada R3P 0X7 204-786-8080	
DESIGNED BY:	D. SIDHU	CHECKED BY:	T. DEGER
DRAWN BY:	B. DICKSON	APPROVED BY:	B. CLEVEN
SCALE:	1:30	ISSUED FOR CONSTRUCTION BY:	
DATE:	2017-06-09	DATE:	
CONSULTANT NO.:			

ENGINEER'S SEAL  
**PRELIMINARY**  
 NOT TO BE  
 USED FOR  
 CONSTRUCTION

THE CITY OF WINNIPEG WATER AND WASTE DEPARTMENT	
COMMUNITY ROW WASTEWATER PUMPING STATION 2017 UPGRADES MOTOR ROOM FLOOR REINFORCING PLAN AND SECTIONS	
CITY DRAWING NUMBER	SHEET REV. SIZE
1-0130L-S0008	001 00 A1