

- NOTES:**
1. ALL INSTRUMENT IDENTIFIERS HAVE AN OPTIONAL FACILITY PREFIX OF "COM-".
 EXAMPLE: COM-LHS-L600.
 2. ELEVATION NOT CONFIRMED BY SURVEYOR.
 3. THE LEVEL CONTROLLER IS ENABLED WHEN THERE IS A PLC FAILURE.
 4. PLC FUNCTION BLOCKS WITH THE SAME IDENTIFIER ARE IMPLEMENTED AS ONE SINGLE FUNCTION BLOCK WITH THE PLC PROGRAM.

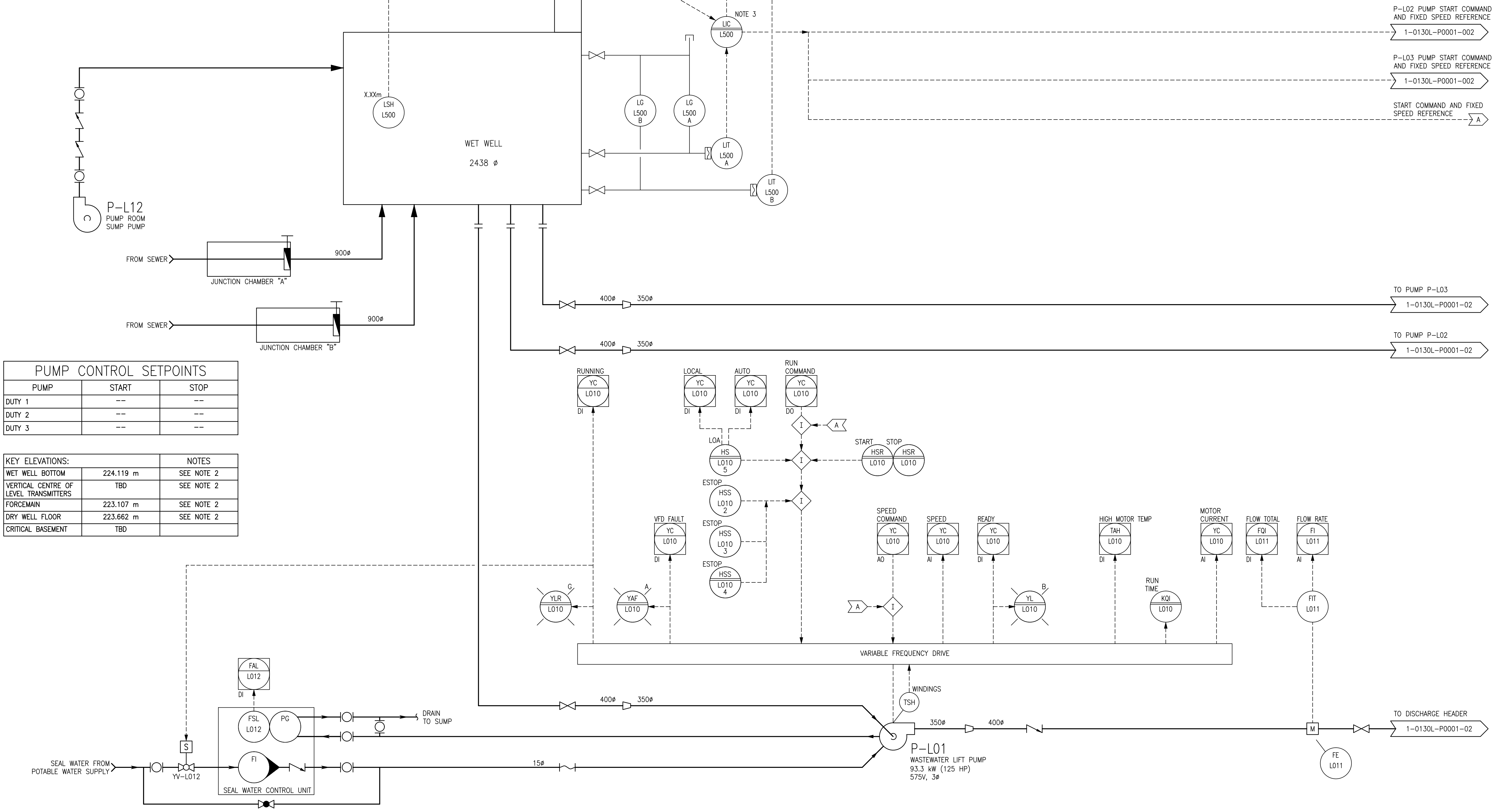
PUMP CONTROL SETPOINTS

PUMP	START	STOP
DUTY 1	--	--
DUTY 2	--	--
DUTY 3	--	--

KEY ELEVATIONS:

KEY ELEVATIONS:	NOTES
WET WELL BOTTOM	224.119 m SEE NOTE 2
VERTICAL CENTRE OF LEVEL TRANSMITTERS	TBD SEE NOTE 2
FORCEMAIN	223.107 m SEE NOTE 2
DRY WELL FLOOR	223.662 m SEE NOTE 2
CRITICAL BASEMENT	TBD

- LEGEND:**
- | | | |
|----------------------------|---------------------------------|----------------------------------|
| DEVICE DESCRIPTORS: | FUNCTIONAL IDENTIFIERS: | KQI |
| A AMBER | FE FLOW SENSOR | TOTAL RUN TIME |
| AI ANALOG INPUT | FI FLOW INDICATOR | LIC LEVEL INDICATING CONTROLLER |
| DI DISCRETE INPUT | FIT FLOW INDICATING TRANSMITTER | LIT LEVEL INDICATING TRANSMITTER |
| G GREEN | FSL FLOW SWITCH | LSH LEVEL SWITCH HIGH |
| MOA MANUAL/OFF/AUTO | HS HAND SWITCH | PSL PRESSURE SWITCH LOW |
| R RED | HSS HAND SWITCH STOP OR SAFETY | YV ON/OFF VALVE |
| | II CURRENT INDICATOR | |



NO.	REVISIONS	DATE	DESIGN	CHECK
00	ISSUED FOR TENDER, BID OPP. 639-2017	2017-07-25	TMC	BJC

SNC-LAVALIN INC. 148 Nature Park Way Winnipeg, MB, Canada R3P 0X7 204-786-8080	
DESIGNED BY: F. ZURZOLO	CHECKED BY: B. CLEVEN
DRAWN BY: D. CALVERLEY	APPROVED BY: B. CLEVEN
SCALE: NTS	ISSUED FOR CONSTRUCTION BY: DATE:
DATE: 2017/05/02	DATE:
CONSULTANT NO.:	

ENGINEER'S SEAL

PRELIMINARY
 NOT TO BE
 USED FOR
 CONSTRUCTION

THE CITY OF WINNIPEG
 WATER AND WASTE DEPARTMENT

COMMUNITY ROW WASTEWATER PUMPING STATION
 2017 UPGRADES
 PROCESS & INSTRUMENTATION DIAGRAM
 WASTEWATER PUMPING

CITY DRAWING NUMBER	SHEET	REV.	SIZE
1-0130L-P0001	001	00	A1