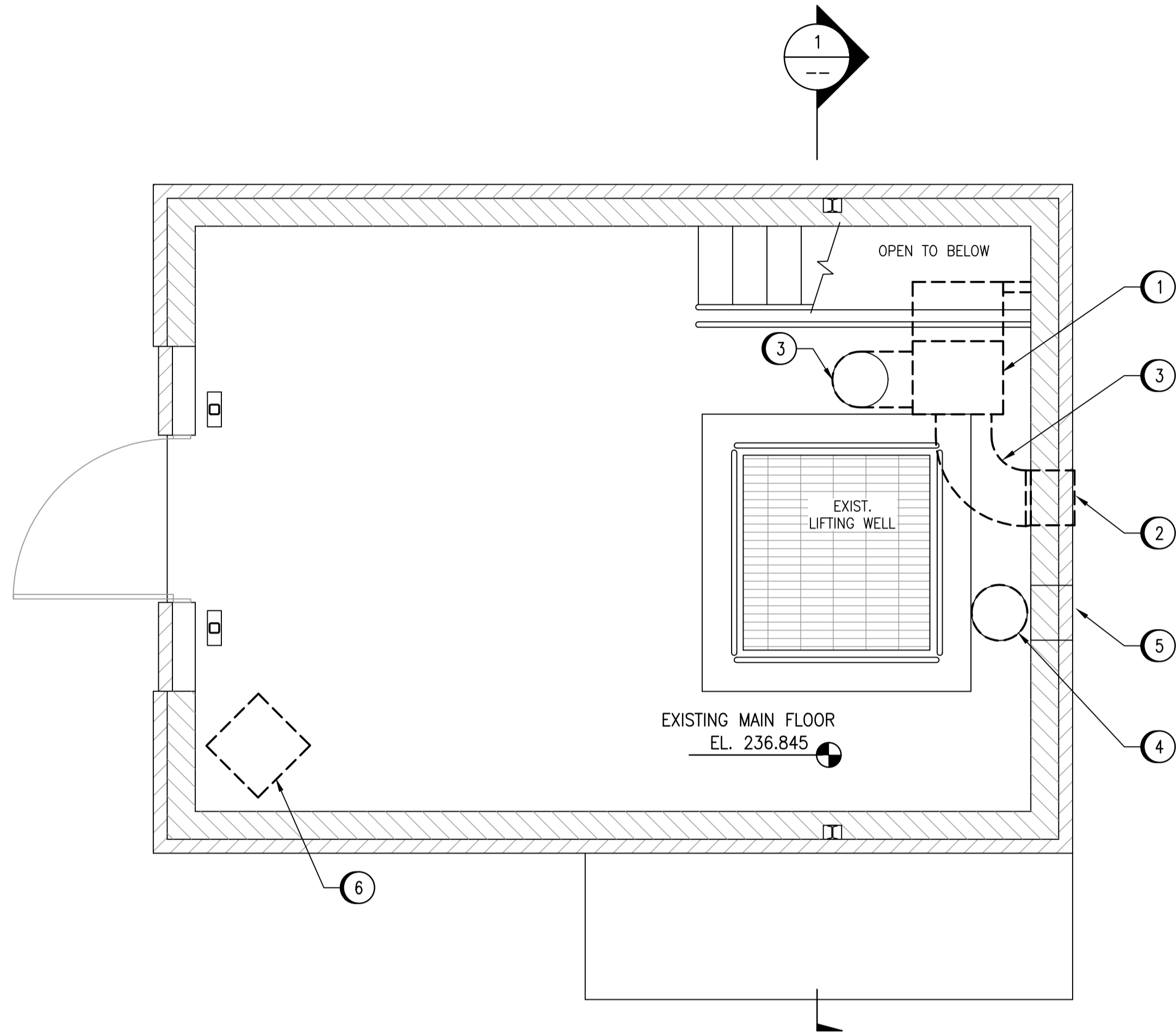
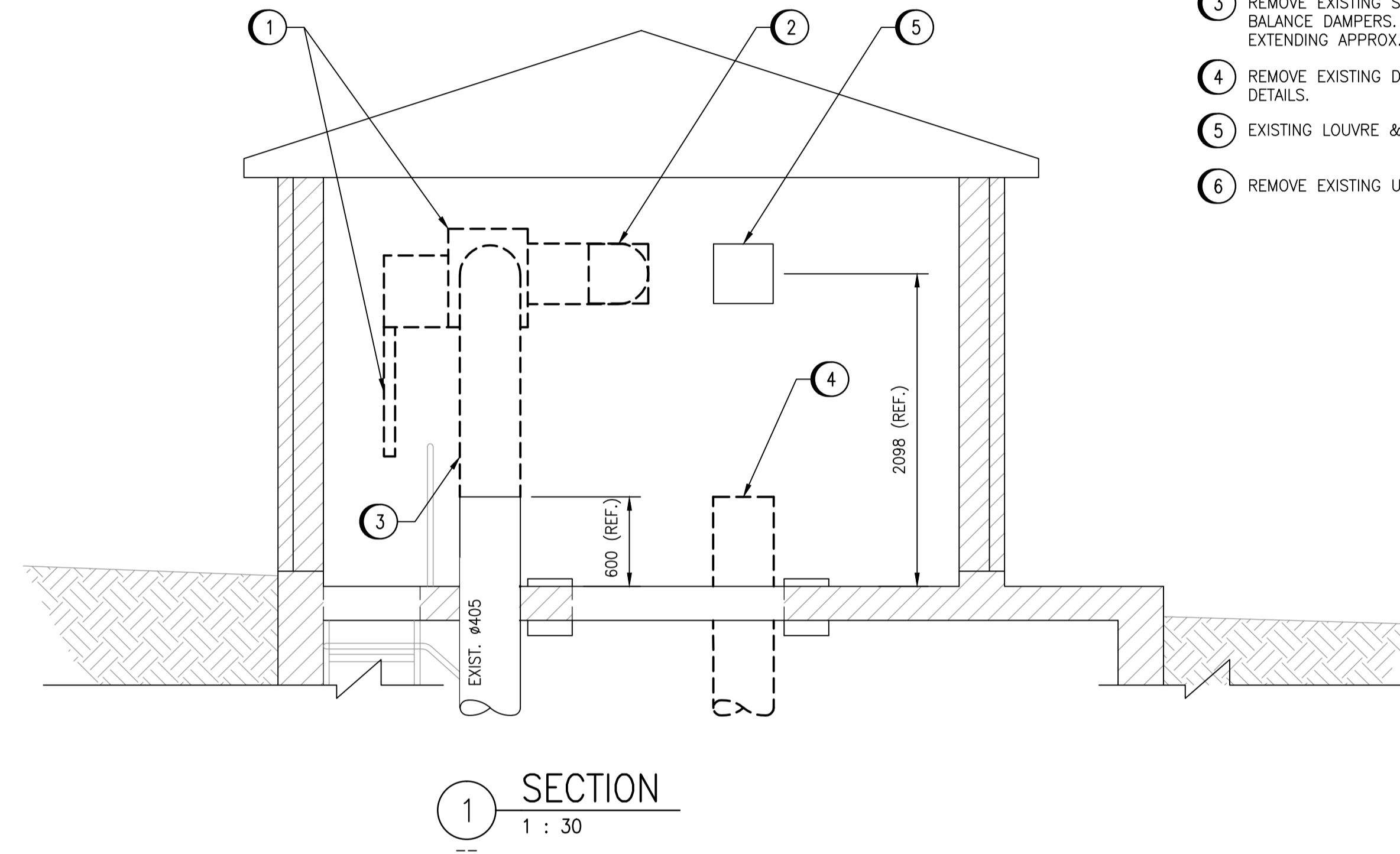


LEGEND:	
	EXISTING
	EXISTING TO BE REMOVED
	EXISTING TO REMAIN



MAIN FLOOR PLAN - REMOVALS
1 : 30



REMOVAL NOTES

- ① REMOVE EXISTING FAN AND SUPPORTS.
- ② REMOVE EXISTING LOUVRES AND INSECT SCREENS.
- ③ REMOVE EXISTING SUPPLY DUCTWORK INCLUDING ELBOWS AND BALANCE DAMPERS. LEAVE VERTICAL SECTION OF DUCTWORK EXTENDING APPROX. 600mm ABOVE FLOOR.
- ④ REMOVE EXISTING DUCTWORK. SEE STRUCTURAL DRAWINGS FOR MORE DETAILS.
- ⑤ EXISTING LOUVRE & INSECT SCREEN TO REMAIN.
- ⑥ REMOVE EXISTING UNIT HEATER AND THERMOSTAT.

Certificate of Authorization
SNC-Lavalin Inc.
 No. 4489

1 : 30

NO.	REVISIONS	DATE	DESIGN	CHECK
00	ISSUED FOR TENDER, BID OPP. 639-2017	2017-07-25	HO	BJC

 SNC-LAVALIN INC. <small>148 Nature Park Way Winnipeg, MB, Canada R3P 0X7 204-786-8080</small>	
DESIGNED BY: H. OJO	CHECKED BY: B. CLEVEN
DRAWN BY: D. CALVERLEY	APPROVED BY: B. CLEVEN
SCALE: DATE: 2017/06/12	ISSUED FOR CONSTRUCTION BY: DATE:
CONSULTANT NO.:	

ENGINEER'S SEAL

PRELIMINARY
 NOT TO BE
 USED FOR
 CONSTRUCTION

THE CITY OF WINNIPEG
 WATER AND WASTE DEPARTMENT

COMMUNITY ROW WASTEWATER PUMPING STATION
 2017 UPGRADES
 MAIN FLOOR PLAN
 HVAC
 REMOVALS

CITY DRAWING NUMBER 1-0130L-M0010	SHEET 001	REV. 00	SIZE A1
---	---------------------	-------------------	-------------------