

PARTIAL PLAN VIEW - PUMP ROOM
 1 : 20

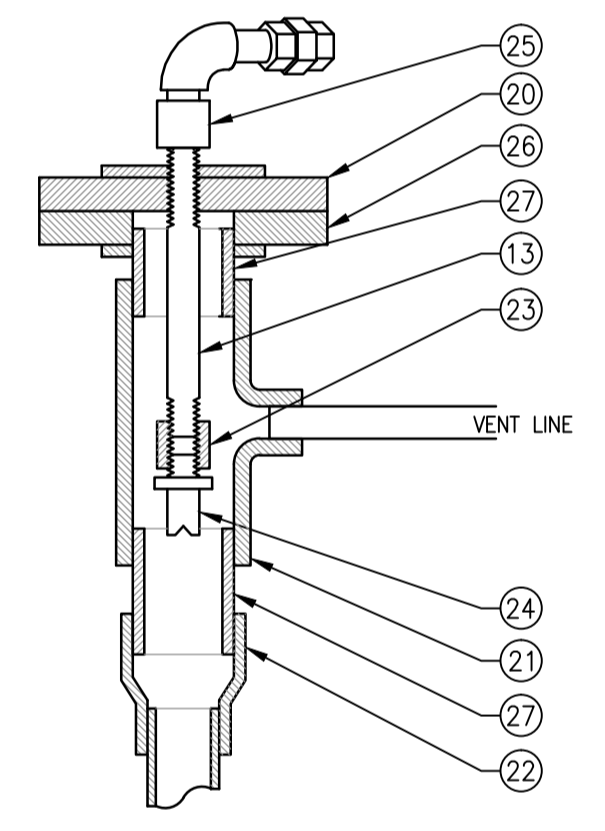
ITEM	DESCRIPTION	QUANTITY	NOTES
1	Ø50mm SCHEDULE 80 PVC PIPE (CUT TO SUIT)	LENGTH AS REQ'D	
2	Ø50mm LINK SEAL	4	
3	Ø50mm PVC BALL VALVE	6	
4	Ø50mm PVC CROSS	2	
5	Ø50mm SCHEDULE 80 PVC FLANGE	2	
6	LEVEL TRANSMITTER	2	
7	Ø50mm PVC TEE	1	
8	Ø50mm PVC UNION	2	
9	Ø50mm PVC CLEAR PIPE (CUT TO SUIT)	LENGTH AS REQ'D	
10	50x25 PVC REDUCER BUSHING	1	
11	Ø25mm PVC BALL VALVE	3	
12	Ø25mm PVC TEE	1	
13	Ø12mm x 200 LONG PVC NIPPLE	1	
14	----		
15	----		
16	Ø12mm PVC PIPE (CUT TO SUIT)	LENGTH AS REQ'D	
17	Ø12mm PVC ELBOW	5	
18	Ø12mm PVC UNION	1	
19	----		
20	Ø75mm PVC BLIND FLANGE, DRILL AND TAP FOR Ø12mm THRD'D PIPE	1	
21	75x75x12 PVC REDUCING TEE	1	
22	75x50 PVC BELL REDUCER	1	
23	Ø12mm PVC THRD'D COUPLING	1	
24	Ø12mm NOZZLE - INDUSTRIAL BRASS FAN TIP	1	
25	Ø12mm THRD'D x SLIP-JOINT ADAPTER	1	
26	Ø75mm PVC FLANGE	1	
27	Ø75mm PIPE (CUT TO SUIT)	LENGTH AS REQ'D	

GENERAL NOTES:
 1. ALL LENGTHS & DIMENSIONS SHOWN ARE TO BE FIELD CONFIRMED BY CONTRACTOR.

- CONSTRUCTION NOTES:**
- (A) CORE THROUGH CONCRETE WALL, PROVIDE Ø50mm SCHEDULE 80 PVC PIPE AND LINK SEAL.
 - (B) CONNECT Ø12mm FLUSHING WATER PIPE FROM NEW SEAL WATER SUPPLY ALONG WALL. (REFER TO DRAWING 1-0130L-M0006-001).
 - (C) SUPPORT SIGHT GLASS PIPE AS REQUIRED WITHOUT IMPEDING VISIBILITY OF LEVEL IN PIPE.
 - (D) PROVIDE Ø12mm SCHEDULE 40 PVC PIPING. (VENT PIPING). VENT BOTH SIGHT GLASS ASSEMBLIES TOGETHER. FASTEN PIPING TO WALL AT NOT MORE THAN 1.0 METRE INTERVALS.
 - (E) CORE THROUGH CONCRETE FLOOR. RUN VENT PIPING AGAINST WALL AND IN SUCH A MANNER THAT IT DOES NOT CAUSE OBSTRUCTIONS.
 - (F) RUN VENT PIPING AGAINST INTERIOR WALL. FASTEN PIPING TO WALL AT NOT MORE THAN 1.0 METRE INTERVALS. VENT TO OUTSIDE THROUGH EXTERIOR WALL AT HIGH LEVEL.
 - (G) PROVIDE S.S. VALVE TAGS.

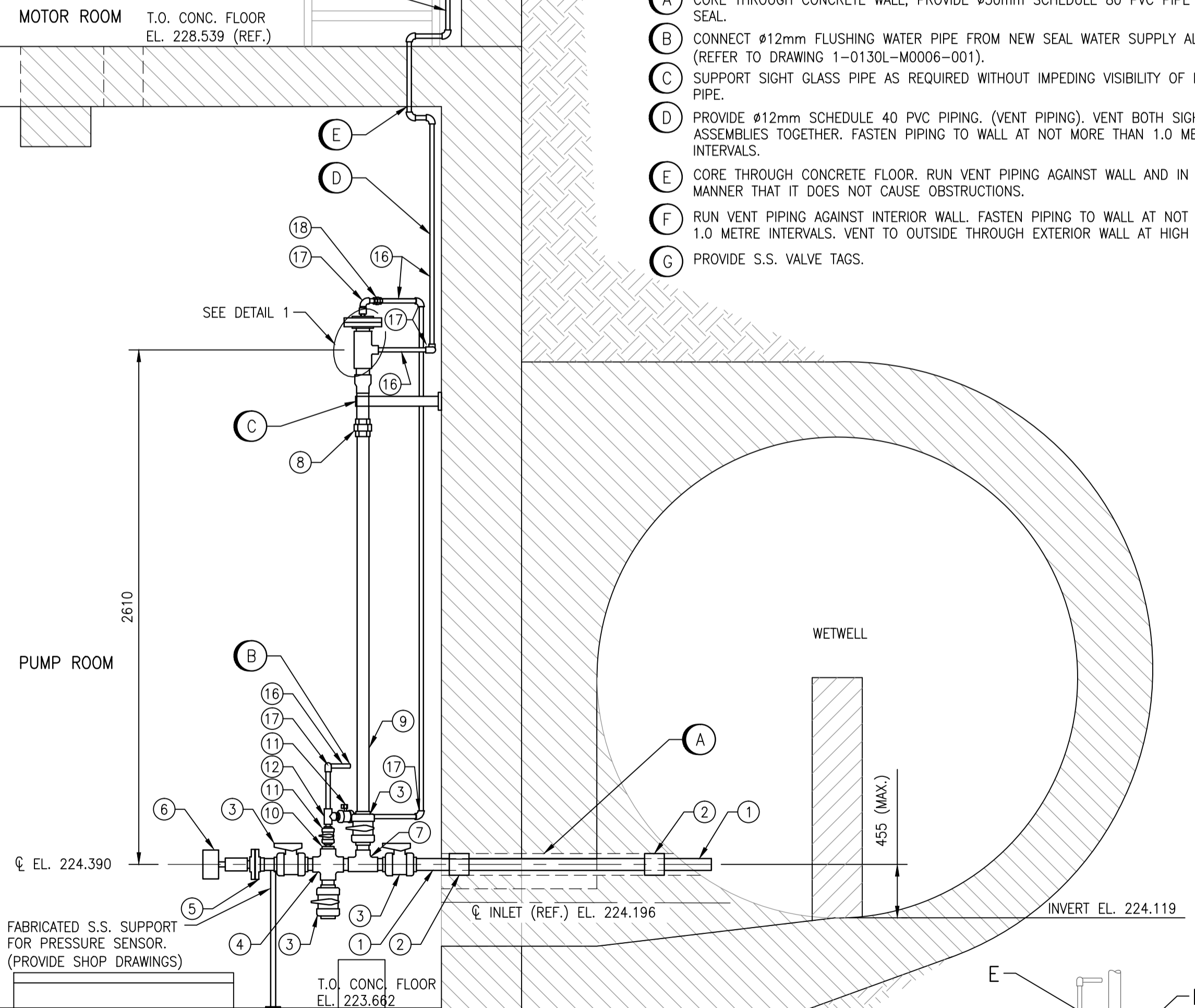
SIGHT GLASS INSTRUCTIONS

- Keep valve 'D' closed during normal operation to prevent fouling of sight glass. If sight glass is needed then open valve 'D'. Clean and isolate the sight glass when finished.
- To clean and isolate the sight glass after it has been used:
 - Keep valve 'D' open.
 - Close valve 'C' to isolate from wetwell.
 - Open valve 'B' to drain water from sight glass.
 - Close valve 'A' to isolate level transmitter.
 - Open valve 'E' to clean the sight glass.
 - When cleaning is complete, close valves 'E', 'D', and 'B'. Then open valves 'A' and 'C'.
- To purge sludge from piping back into the wetwell:
 - Keep valve 'C' open.
 - Close valve 'A' to isolate level transmitter.
 - Open valve 'F' to purge sludge back into the wetwell.
 - When purging is complete, close valve 'F' then open valve 'A'.
- To drain system:
 - Close valve 'C'.
 - Open valve 'B'.
 - When draining is complete, close valve 'B' then open valve 'C'.

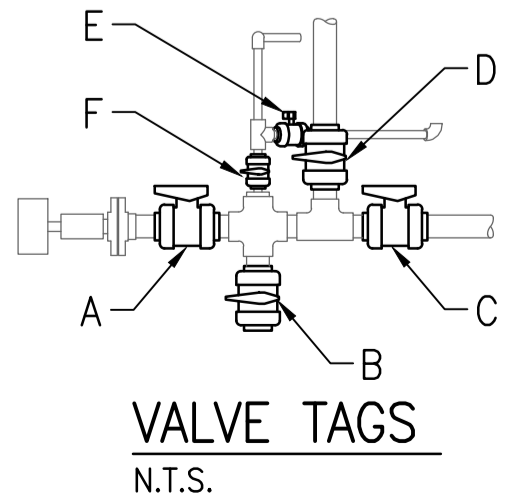


DETAIL 1
 1 : 5

TYP. OF 1.
 FASTEN TO WALL SO THAT LAMACOID IS VISIBLE TO OPERATORS.



SECTION 1
 1 : 20



APEGM
 Certificate of Authorization
SNC-Lavalin Inc.
 No. 4489

1 : 20

LAMACOID DETAIL
 1 : 1

NO.	REVISIONS	DATE	DESIGN	CHECK
00	ISSUED FOR TENDER, BID OPP. 639-2017	2017-07-25	FZ	BJC

SNC-LAVALIN INC.
 148 Nature Park Way
 Winnipeg, MB, Canada R3P 0X7
 204-786-8080

DESIGNED BY: F. ZURZOLO
 DRAWN BY: D. CALVERLEY
 SCALE: 1 : 20
 DATE: 2017/05/26
 CONSULTANT NO.:

CHECKED BY: B. CLEVEN
 APPROVED BY: B. CLEVEN
 ISSUED FOR CONSTRUCTION BY:
 DATE:

PRELIMINARY
 NOT TO BE USED FOR CONSTRUCTION

THE CITY OF WINNIPEG
 WATER AND WASTE DEPARTMENT

COMMUNITY ROW WASTEWATER PUMPING STATION
 2017 UPGRADES
 DETAILS
 WETWELL SIGHT GLASS

CITY DRAWING NUMBER: 1-0130L-M0008
 SHEET: 001
 REV: 00
 SIZE: A1