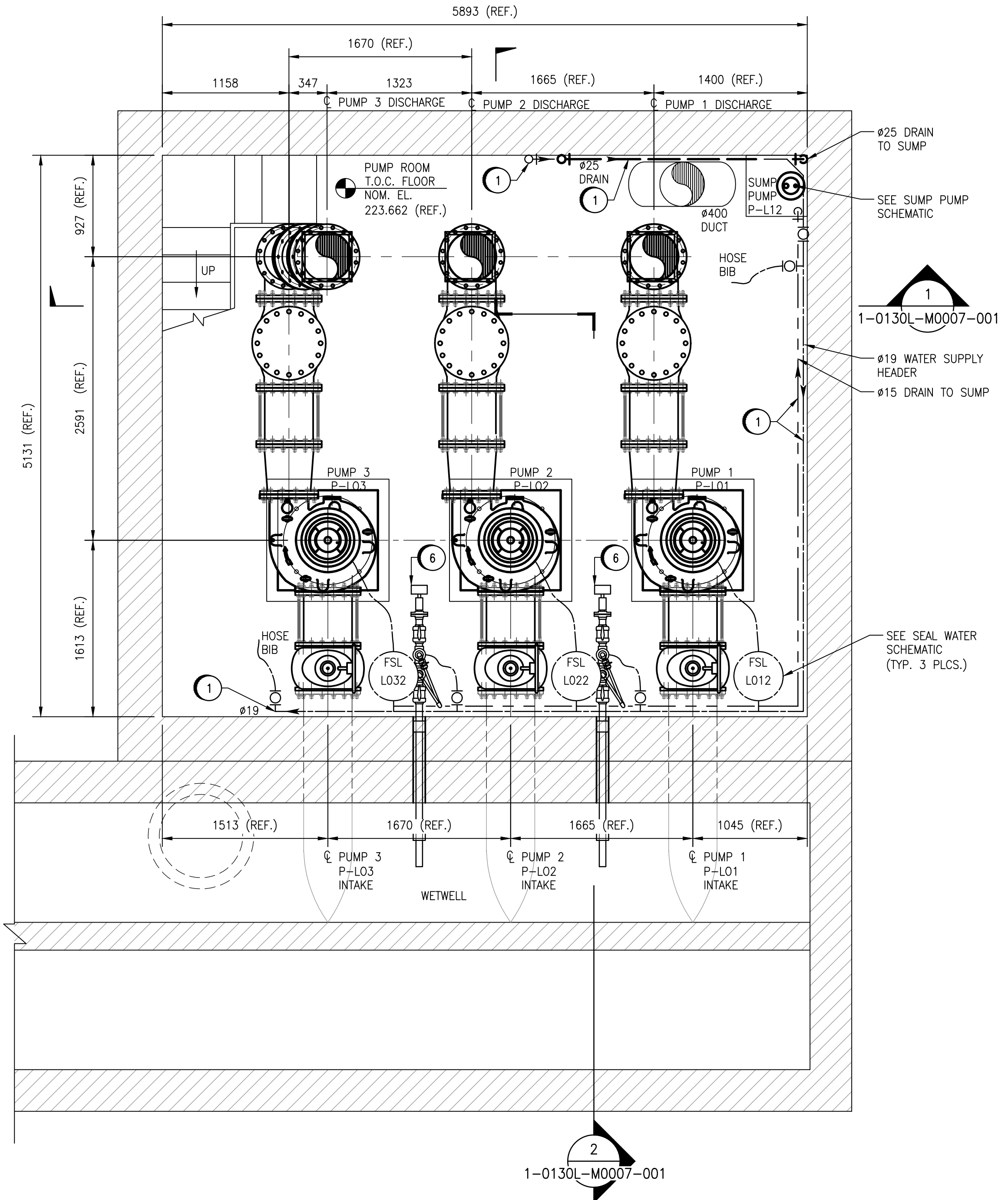


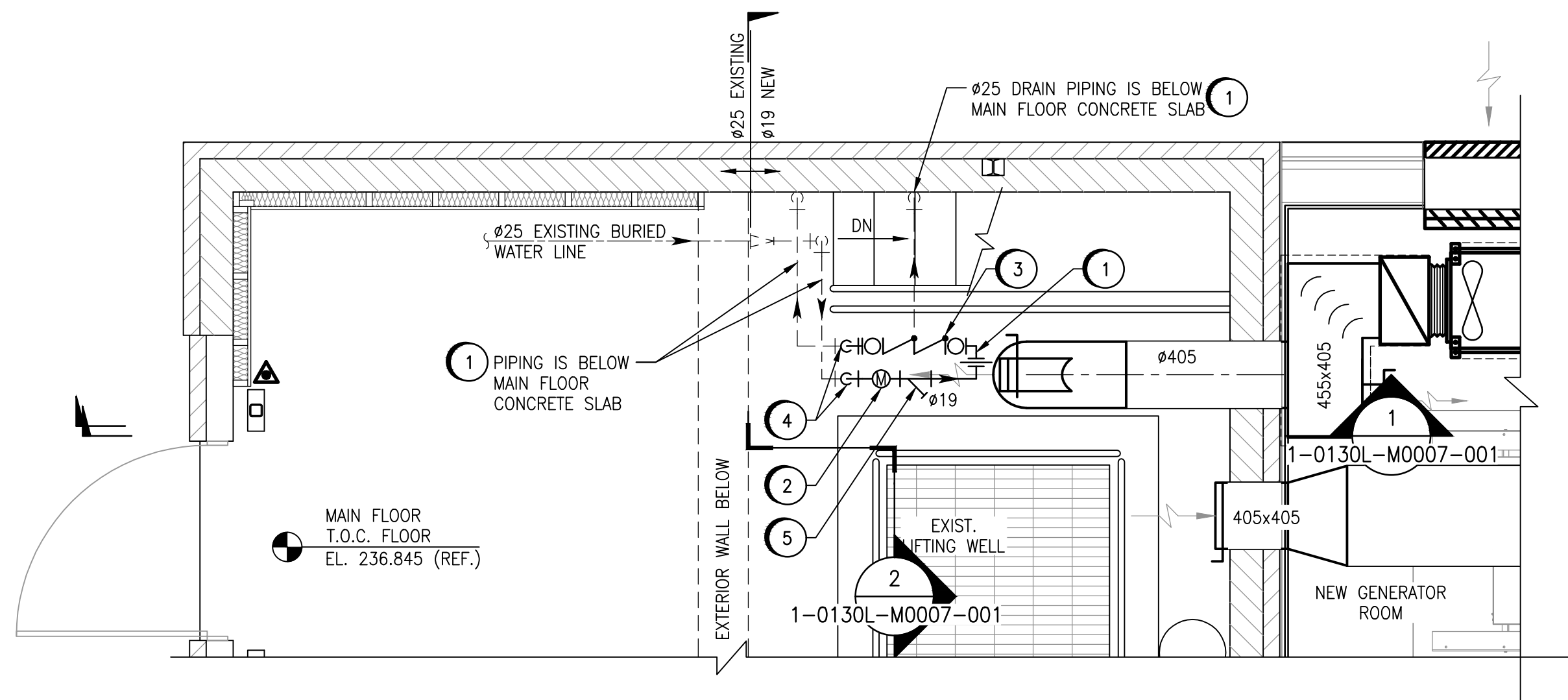
**MOTOR ROOM FLOOR PLAN - NEW WORK**  
SCALE: 1 : 30



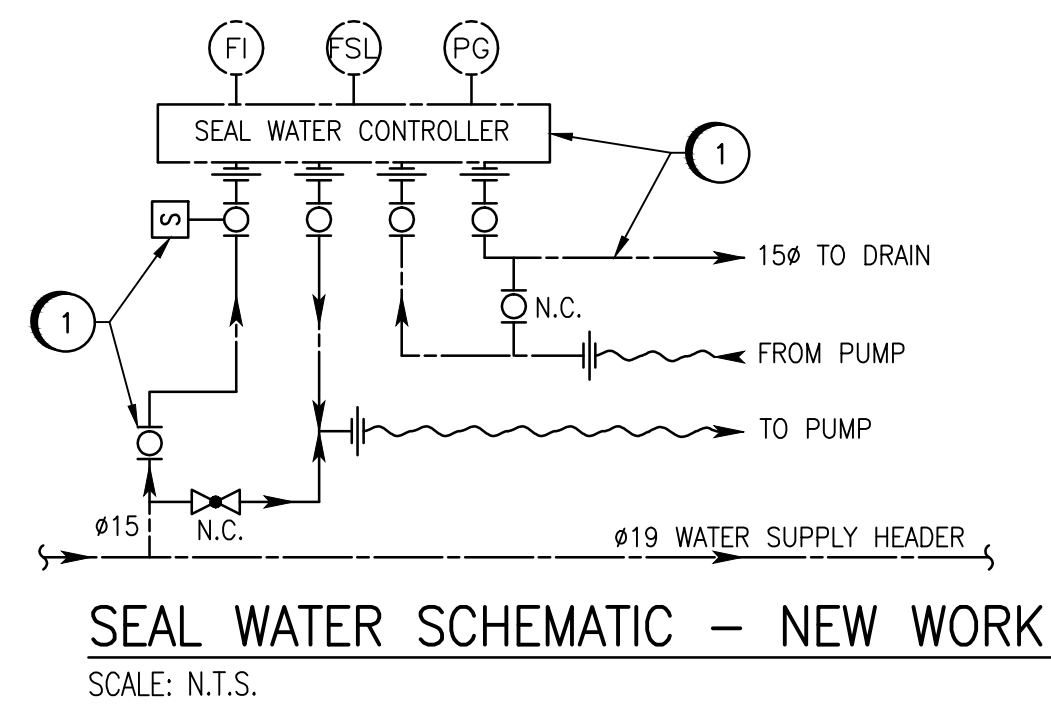
**PUMP ROOM FLOOR PLAN - NEW WORK**  
SCALE: 1 : 30

- GENERAL NOTES:**
1. ALL LENGTHS & DIMENSIONS SHOWN ARE TO BE FIELD CONFIRMED BY CONTRACTOR.
  2. COORDINATE WITH DIVISION 26 WHERE EQUIPMENT THAT REQUIRES NEW ELECTRICAL IS TO BE INSTALLED.
  3. ALL BUILDING MODIFICATIONS REQUIRED FOR THE INSTALLATION OF MECHANICAL EQUIPMENT ARE PART OF THE CONTRACTORS SCOPE OF WORK.
  4. ALL PIPE, FITTINGS, FLANGES & SUPPORTS TO BE PAINTED AS PART OF THE CONTRACTORS SCOPE OF WORK.

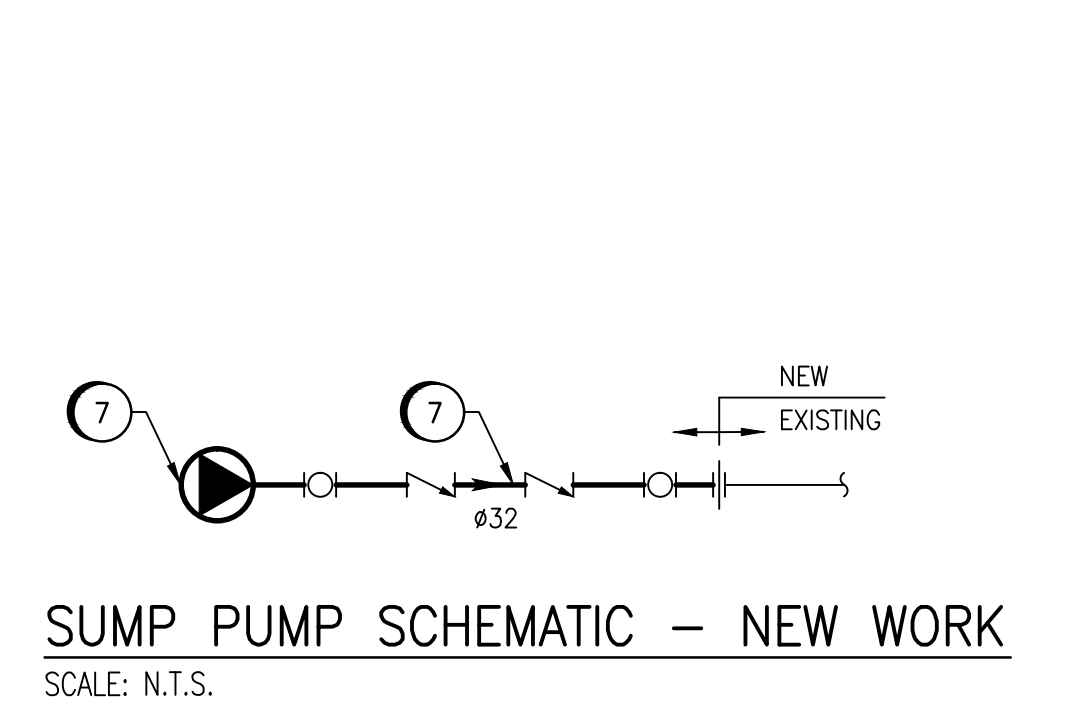
- NEW WORK NOTES:**
- 1 NEW COPPER PIPING, VALVES, INSTRUMENTS, FITTINGS, HOSES & SUPPORTS TO BE SUPPLIED AND INSTALLED BY CONTRACTOR. PUMP SEAL WATER SOLENOID VALVES TO BE SUPPLIED BY OTHERS AND INSTALLED BY THE CONTRACTOR.
  - 2 NEW WATER METER TO BE SUPPLIED BY OTHERS AND INSTALLED BY CONTRACTOR.
  - 3 NEW REDUCED PRESSURE ZONE ASSEMBLY C/W AIR GAP DRAIN CUP, DRAIN PIPING, FITTINGS & SUPPORTS TO BE SUPPLIED AND INSTALLED BY CONTRACTOR.
  - 4 CONTRACTOR TO CORE DRILL HOLE FOR PIPING. CONTRACTOR IS RESPONSIBLE TO CONDUCT NON-DESTRUCTIVE TEST (NDT) TO IDENTIFY REBAR LOCATIONS. CONTRACT ADMINISTRATOR TO BE CONTACTED/INFORMED OF REBAR LOCATIONS. CORE DRILLING SHALL NOT PROCEED UNTIL CONTRACT ADMINISTRATOR APPROVES.
  - 5 NEW STRAINER TO BE SUPPLIED BY AND INSTALLED BY CONTRACTOR.
  - 6 SUMP LEVEL TRANSMITTER AND SIGHT GLASS. FOR DETAILS SEE DWG. 1-0130L-M0008-001.
  - 7 NEW SUMP PUMP, PIPING, VALVES, FITTINGS TO BE SUPPLIED AND INSTALLED BY CONTRACTOR.



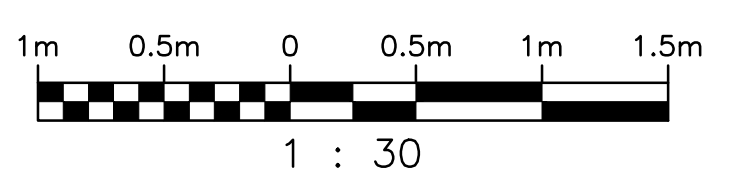
**PARTIAL MAIN FLOOR PLAN - NEW WORK**  
SCALE: 1 : 30



**SEAL WATER SCHEMATIC - NEW WORK**  
SCALE: N.T.S.



**SUMP PUMP SCHEMATIC - NEW WORK**  
SCALE: N.T.S.



DESIGNED BY: F. ZURZOLO		CHECKED BY: B. CLEVEN	
DRAWN BY: C. FETTERLY		APPROVED BY: B. CLEVEN	
SCALE: 1 : 30		ISSUED FOR CONSTRUCTION	
DATE: 2017/04/21		DATE:	
CONSULTANT NO.:			
00	ISSUED FOR TENDER, BID OPP. 639-2017	2017-07-25	FZ BJC
NO.	REVISIONS	DATE	DESIGN/CHECK

ENGINEER'S SEAL

**PRELIMINARY**  
NOT TO BE  
USED FOR  
CONSTRUCTION

**THE CITY OF WINNIPEG**  
WATER AND WASTE DEPARTMENT

COMMUNITY ROW WASTEWATER PUMPING STATION  
2017 UPGRADES  
PLAN  
MECHANICAL - UTILITIES  
MAIN FLOOR, MOTOR ROOM & PUMP ROOM - NEW WORK

CITY DRAWING NUMBER  
1-0130L-M0006

SHEET REV. SIZE  
001 00 A1