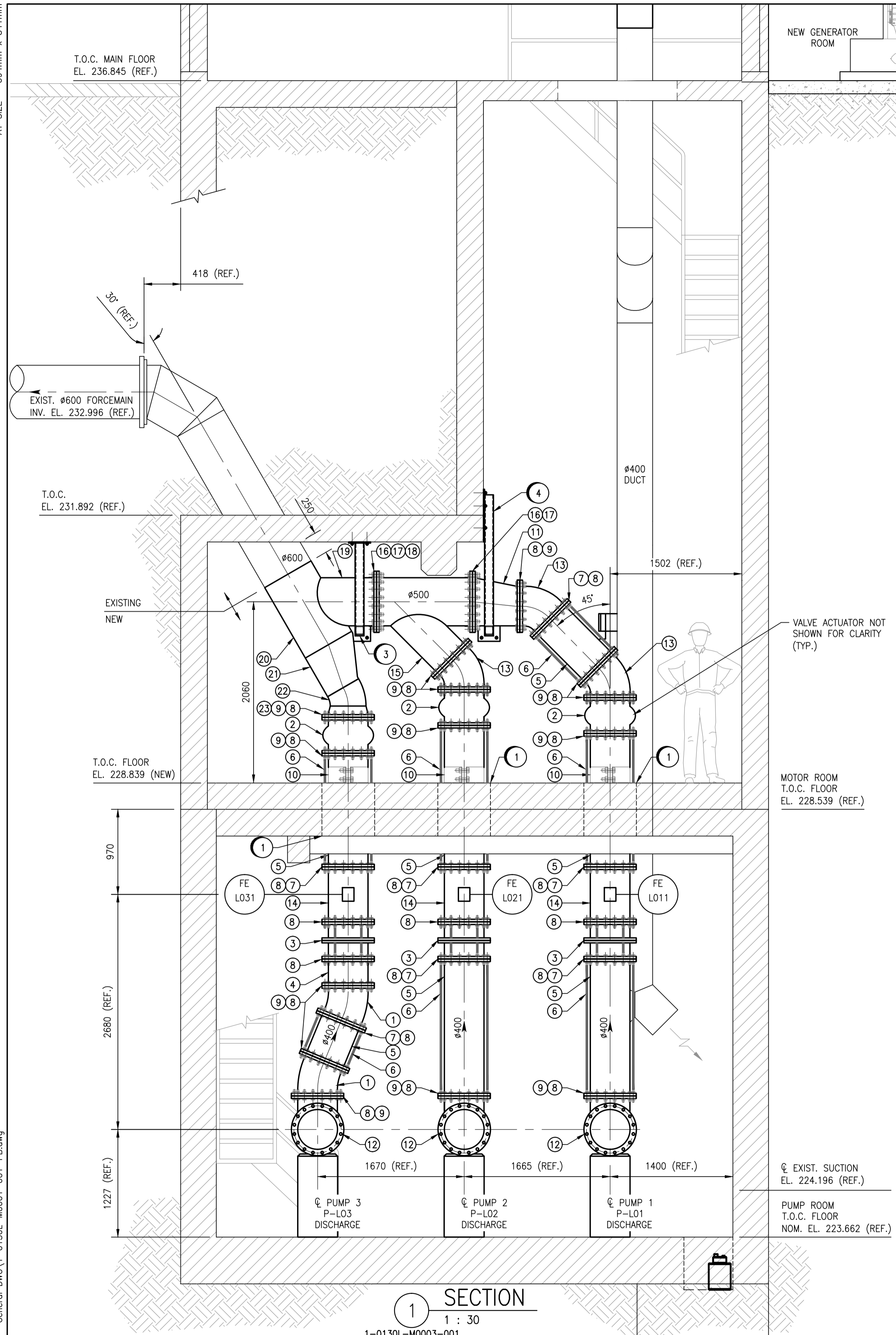
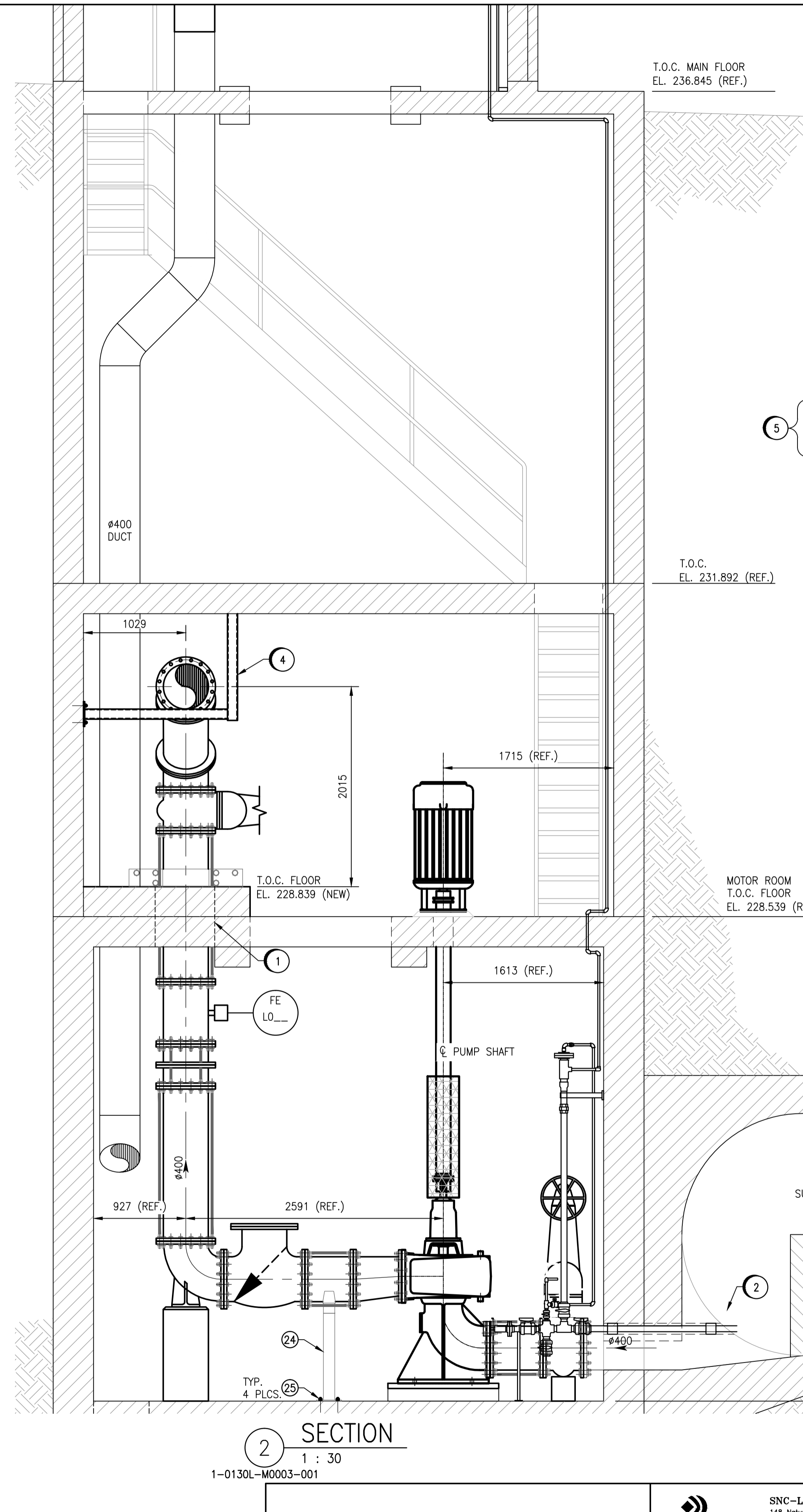
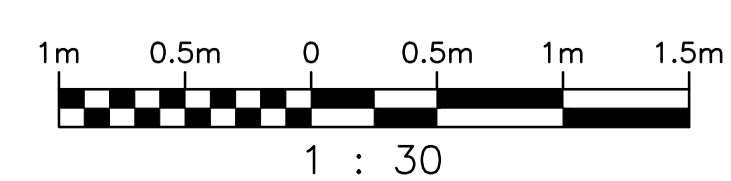


A1 SIZE - 594mm x 841mm

LAST SAVE: 2017/07/26 - 2:46pm
 PATH: M:\644548\MENG\45MEC\DD - General DWG\1-0130L-M0001-001-PB.dwg



1 SECTION
 1 : 30
 1-0130L-M0003-001



2 SECTION
 1 : 30
 1-0130L-M0003-001

MATERIALS LIST				
ITEM	DESCRIPTION	ENDS	QUANTITY	NOTES
1	#400 DUCTILE IRON 22.5' ELBOW	FL	2	*
2	#400 GATE VALVE C/W SPUR GEAR & HANDWHEEL	FL	3	**
3	#400 DISMANTLING JOINT C/W TIE RODS	FL	3	*
4	#400 x 300mm LG. PIPE SPOOL	FL x FL	1	*
5	#400 DUCTILE IRON PIPE SPOOL (CUT TO SUIT)	FL x PE	AS REQ'D	*
6	#25 TIE ROD C/W HEAVY HEX NUTS (CUT TO SUIT)	TH	LENGTH AS REQ'D	*
7	#400 UNIFLANGE	FL	7	*
8	#25 x 114mm LG. BOLT C/W HEAVY HEX NUT	TH	AS REQ'D	*
9	#400 x 3mm TH. GASKET	-	14	*
10	#450 ANVIL FIG. 40 RISER CLAMP	-	3	*
11	#500 x #400 DUCTILE IRON ECCENTRIC REDUCER	FL	1	*
12	#400 DUCTILE IRON 90° BASE ELBOW	FL	3	*
13	#400 DUCTILE IRON 45° ELBOW	FL	3	*
14	#400 ELECTROMAGNETIC FLOW METER	FL	3	*
15	#450 x #450 x #400 DUCTILE IRON LATERAL	FL	1	*
16	#29 x 115mm LG. BOLT C/W HEAVY HEX NUT	TH	32	*
17	#500 x 3mm TH. GASKET	-	2	*
18	#500 STEEL SLIP ON FLANGE, FLAT FACE	FL	1	*
19	#500 STEEL PIPE SPOOL (CUT TO SUIT)	PE x BE	AS REQ'D	*
20	#600 STEEL PIPE SPOOL (CUT TO SUIT)	BE x BE	AS REQ'D	*
21	#600 x #400 STEEL ECCENTRIC REDUCER	BE	1	*
22	#400 STEEL 30° ELBOW	BE	1	*
23	#400 STEEL WELD NECK FLANGE, FLAT FACE	FL	1	*
24	#450 ANVIL FIG. 258 PIPE SADDLE SUPPORT C/W STANCHION & BASE PLATE	-	3	*
25	#16 x 150mm LG. ANCHOR BOLT	-	4	*

TIE ROD SCHEDULE		
PIPE DIA.	QTY./FLANGE	
#400	4	

- GENERAL NOTES:**
- ALL LENGTHS & DIMENSIONS SHOWN ARE TO BE FIELD CONFIRMED BY CONTRACTOR.
 - COORDINATE WITH DIVISION 26 WHERE EQUIPMENT THAT REQUIRES NEW ELECTRICAL IS TO BE INSTALLED.
 - ALL BUILDING MODIFICATIONS REQUIRED FOR THE INSTALLATION OF MECHANICAL EQUIPMENT ARE PART OF THE CONTRACTORS SCOPE OF WORK.
 - ALL NEW PIPE, FITTINGS, FLANGES & SUPPORTS TO BE PAINTED AS PART OF THE CONTRACTORS SCOPE OF WORK.
 - ALL FLANGED (FL) x PLAIN END (PE) PIPE SPOOLS TO BE SHOP FABRICATED WITH A 150mm FIELD TRIM ALLOWANCE.

- NEW WORK NOTES:**
- CONTRACTOR TO CORE DRILL HOLE FOR PIPING. CONTRACTOR IS RESPONSIBLE TO CONDUCT NON-DESTRUCTIVE TEST (NDT) TO IDENTIFY REBAR LOCATIONS. CONTRACT ADMINISTRATOR TO BE CONTACTED/INFORMED OF REBAR LOCATIONS. CORE DRILLING SHALL NOT PROCEED UNTIL CONTRACT ADMINISTRATOR APPROVES.
 - SUMP LEVEL TRANSMITTER AND SIGHT GLASS. FOR DETAILS SEE DWG. 1-0130L-M0008-001.
 - NEW PIPE SUPPORT TO BE SUPPLIED AND INSTALLED BY CONTRACTOR. SEE DRAWING 1-0310L-M0005-001 FOR DETAIL A.
 - NEW PIPE SUPPORT TO BE SUPPLIED AND INSTALLED BY CONTRACTOR. SEE DRAWING 1-0310L-M0005-001 FOR DETAIL B.
 - MATERIALS FOR PIPING INTERSECTION TO BE FABRICATED BY CONTRACTOR IN THE FIELD.



NO.	REVISIONS	DATE	DESIGN	CHECK
00	ISSUED FOR TENDER, BID OPP. 639-2017	2017-07-25	FZ	BJC

SNC-LAVALIN INC. 148 Nature Park Way Winnipeg, MB, Canada R3P 0X7 204-786-8080		ENGINEER'S SEAL
DESIGNED BY: F. ZURZOLO	CHECKED BY: B. CLEVEN	PRELIMINARY NOT TO BE USED FOR CONSTRUCTION
DRAWN BY: C. FETTERLY	APPROVED BY: B. CLEVEN	
SCALE: 1 : 30	ISSUED FOR CONSTRUCTION	
DATE: 2017/04/21	BY: DATE:	
CONSULTANT NO.:		

THE CITY OF WINNIPEG WATER AND WASTE DEPARTMENT		
COMMUNITY ROW WASTEWATER PUMPING STATION 2017 UPGRADES SECTION MECHANICAL MOTOR ROOM & PUMP ROOM - NEW WORK		
CITY DRAWING NUMBER 1-0130L-M0004	SHEET 001	REV. SIZE 00 A1