

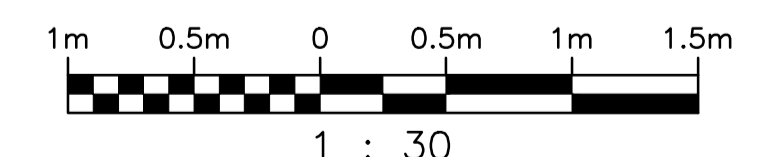
GENERAL NOTES:

1. COORDINATE WITH DIVISION 26 TO REMOVE ELECTRICAL WHERE ELECTRICAL EQUIPMENT IS TO BE REMOVED.
2. ALL BUILDING MODIFICATIONS REQUIRED FOR THE INSTALLATION OF MECHANICAL EQUIPMENT ARE PART OF THE CONTRACTORS SCOPE OF WORK.

DEMOLITION NOTES:

- 1 REMOVE EXISTING MOTORS, SHAFTS AND PUMPS.
- 2 REMOVE EXISTING VALVES, FLANGES AND PIPING.
- 3 CUT EXISTING PIPING BELOW CEILING LEAVING SUFFICIENT LENGTH FOR CONNECTION OF NEW PIPING.
- 4 REMOVE EXISTING WATER PIPING, VALVES, METER, FITTINGS & SUPPORTS.
- 5 EXISTING WATER PIPING TO REMAIN.
- 6 REMOVE EXISTING SUMP PUMP, PIPING, VALVES & FITTINGS.

1 SECTION
 1 : 30
 1-0130L-0001-001



NO.	REVISIONS	DATE	DESIGN	CHECK
00	ISSUED FOR TENDER, BID OPP. 639-2017	2017-07-25	FZ	BJC

SNC-LAVALIN INC. 148 Nature Park Way Winnipeg, MB, Canada R3P 0X7 204-786-8080	
DESIGNED BY: F. ZURZOLO	CHECKED BY: B. CLEVEN
DRAWN BY: C. FETTERLY	APPROVED BY: B. CLEVEN
SCALE: 1 : 30	ISSUED FOR CONSTRUCTION BY: DATE:
DATE: 2017/04/21	DATE:
CONSULTANT NO.:	

ENGINEER'S SEAL
PRELIMINARY
 NOT TO BE
 USED FOR
 CONSTRUCTION

THE CITY OF WINNIPEG
 WATER AND WASTE DEPARTMENT

COMMUNITY ROW WASTEWATER PUMPING STATION
 2017 UPGRADES
 SECTION
 MECHANICAL
 MOTOR ROOM & PUMP ROOM - DEMOLITION

CITY DRAWING NUMBER 1-0130L-M0002	SHEET 001	REV. 00	SIZE A1
---	---------------------	-------------------	-------------------