

SERVICE EQUIPMENT LAYOUT
SCALE: 1 : 30

GENERAL NOTES:

- ALL ELECTRICAL SERVICE UPGRADE COSTS FROM MANITOBA HYDRO WILL BE BILLED DIRECTLY TO THE CITY, NOT THE CONTRACTOR.
- CONTRACTOR TO LOCATE ALL UNDERGROUND SEWER AND UTILITY LOCATIONS PRIOR TO INSTALLATION OF GROUND RODS AND CABLING. REFER TO CIVIL SITE PLAN DRAWING 1-0130L-C0002 FOR APPROXIMATE LOCATIONS.

DEMOLITION NOTES:

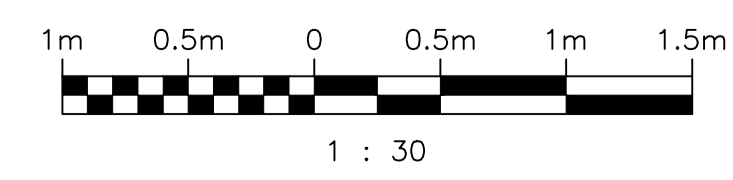
- COORDINATE WITH MANITOBA HYDRO FOR THE DEMOLITION OF THE EXISTING ELECTRICAL SERVICE, INCLUDING POLE-MOUNTED TRANSFORMERS, SERVICE CABLING, AND HYDRO POLES AS REQUIRED. REFER TO DRAWING 1-0130L-E0003 FOR ADDITIONAL DEMOLITION REQUIREMENTS.
- RESTORE SITE CONDITIONS FOLLOWING REMOVAL OF EXISTING ELECTRICAL SERVICE CABLING AND HYDRO POLES.

CONSTRUCTION NOTES:

- COORDINATE WITH MANITOBA HYDRO FOR THE INSTALLATION OF A NEW 500KVA PAD-MOUNT SERVICE TRANSFORMER, XFMR-L70. TRANSFORMER CLEARANCES SHALL BE IN ACCORDANCE WITH CEC RULE 26-242.
- PROVIDE AND INSTALL NEW CUSTOMER SERVICE TERMINATION ENCLOSURE, CSTE-L70. COORDINATE WITH MANITOBA HYDRO FOR PROCUREMENT AND INSTALLATION OF CURRENT TRANSFORMERS, POTENTIAL TRANSFORMERS, AND METER.
- PROVIDE AND INSTALL FOUR (4) NEW GROUND RODS AND GROUND WELLS AS SHOWN. GROUND CABLING SHALL BE BURIED 300-500 MM BELOW FINISHED GRADE AND IN UNDISTURBED NATIVE SOIL. ALL CONNECTIONS SHALL BE COMPRESSION OR CADWELDED. COORDINATE WITH MANITOBA HYDRO PRIOR TO INSTALLATION TO CONFIRM GROUNDING INSTALLATION DETAILS FOR SERVICE TRANSFORMER.
- GROUND SERVICE TRANSFORMER NEUTRAL AND GROUND BAR, AND THE CSTE GROUND, TO THE NEW GROUNDING SYSTEM. REFER TO THE GROUNDING RISER DIAGRAM ON DRAWING 1-0130L-E0010.
- PROVIDE AND INSTALL DIRECT BURIED TECK90 CABLING BETWEEN THE CSTE AND SGR-L71. REFER TO DETAIL 'D' ON DRAWING 1-0130L-E0010 FOR TRENCH DEPTH AND CABLE SPACING REQUIREMENTS. PROVIDE IDENTIFICATION OF UNDERGROUND CABLING AS PER DETAIL 'E' ON DRAWING 1-0130L-E0010.
- PROVIDE CORE DRILLING AND ROXTEC CABLE SEALS FOR CABLE ENTRY BELOW GRADE. PROVIDE CORE DRILLING IN FLOOR BELOW SGR-L71 FOR CABLE ENTRY INTO SWITCHGEAR. SCAN FOR AND AVOID REBAR IN WALLS AND FLOOR. SCAFFOLDING WILL BE REQUIRED TO ACCESS THIS LOCATION FROM THE INTERIOR OF THE BUILDING.
- GROUND THE ELECTRICAL EQUIPMENT IN THE STATION (SWITCHGEAR, MCC, ETC.) IN ACCORDANCE WITH THE GROUNDING RISER DIAGRAM. REFER TO DRAWING 1-0130L-E0010.
- PROVIDE DETAILED MARKUPS INDICATING EXACT LOCATIONS OF EQUIPMENT AND UNDERGROUND CABLING TO FACILITATE DEVELOPMENT OF RECORD DRAWINGS.

LEGEND:

- #2/0 COPPER GROUND CABLE
- ⊙ 3000mm LONG (19mm ⌀) COPPER CLAD GROUND ROD WITH GROUND WELL



APECM
Certificate of Authorization
SNC-Lavalin Inc.
No. 4489

NO.	REVISIONS	DATE	DESIGN	CHECK
00	ISSUED FOR TENDER, BID OPP: 639-2017	2017-07-25	BJC	TMC

SNC-LAVALIN INC.
148 Nature Park Way
Winnipeg, MB, Canada R3P 0X7
204-786-8080

DESIGNED BY: B. CLEVEN
DRAWN BY: Y. KONIG
SCALE: 1:30
DATE: 2017/06/14
CONSULTANT NO.:

CHECKED BY: T. CHURCH
APPROVED BY: B. CLEVEN
ISSUED FOR CONSTRUCTION BY:
DATE:

ENGINEER'S SEAL
PRELIMINARY
NOT TO BE
USED FOR
CONSTRUCTION

THE CITY OF WINNIPEG
Winnipeg WATER AND WASTE DEPARTMENT

COMMUNITY ROW WASTEWATER PUMPING STATION
2017 UPGRADES
SITE PLAN
ELECTRICAL SERVICE EQUIPMENT LAYOUT

CITY DRAWING NUMBER	SHEET	REV.	SIZE
1-0130L-E0002	001	00	A1