

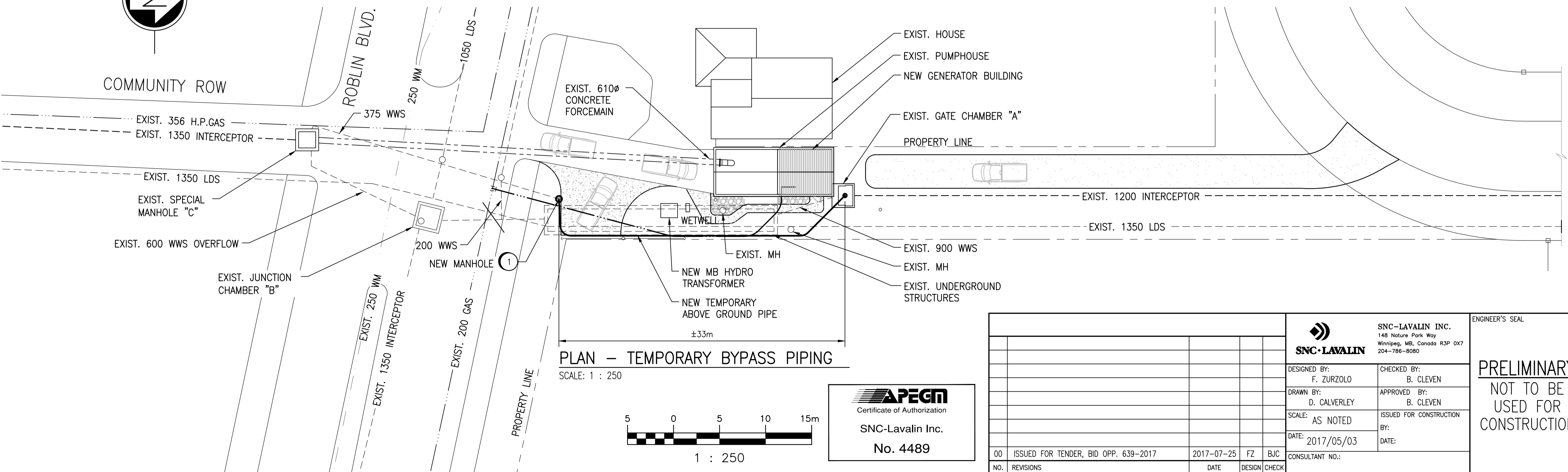
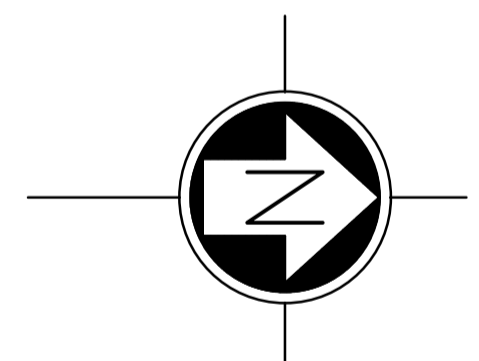
PROFILE - TEMPORARY BYPASS PIPING
 SCALE: HORIZONTAL 1 : 250
 VERTICAL 1 : 50

LEGEND

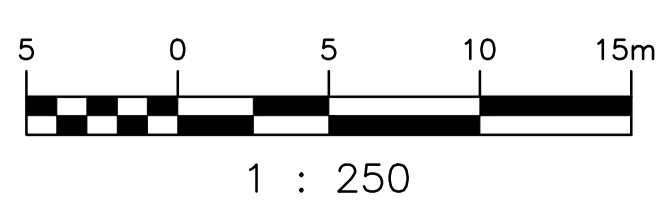
- NEW BYPASS PIPING:
- EXIST. STRUCTURE TO REMAIN:
- EXIST. GAS SERVICE:
- EXIST. WATERMAIN:

NEW WORK NOTES:

- 1 NEW MANHOLE: STANDARD PRECAST CONCRETE MANHOLE C/W BITUMINOUS GASKETS, LADDER AND LOCKING STEEL LID INSTALL ACCORDING TO CITY OF WINNIPEG SPECIFICATION CW2030, CW2130 AND SD-010.
- 2 JUNCTION CHAMBER PIPING AND PUMP CABLES THROUGH 600 WWS OVERFLOW PIPE.
- 3 SEWER SEALS RATED TO 125 PSI. PROVIDE LEAK DETECTION ALARM.



PLAN - TEMPORARY BYPASS PIPING
 SCALE: 1 : 250



| NO. | REVISIONS | DATE | DESIGN | CHECK |
|-----|--------------------------------------|------------|--------|-------|
| 00 | ISSUED FOR TENDER, BID OPP. 639-2017 | 2017-07-25 | FZ | BJC |

| | |
|---|---|
| SNC-LAVALIN INC. 148 Nature Park Way Winnipeg, MB, Canada R3P 0X7 204-786-8080 | |
| DESIGNED BY: F. ZURZOLO | CHECKED BY: B. CLEVEN |
| DRAWN BY: D. CALVERLEY | APPROVED BY: B. CLEVEN |
| SCALE: AS NOTED | ISSUED FOR CONSTRUCTION BY: DATE: |
| DATE: 2017/05/03 | DATE: |
| CONSULTANT NO.: | |

ENGINEER'S SEAL
PRELIMINARY
 NOT TO BE
 USED FOR
 CONSTRUCTION

THE CITY OF WINNIPEG
 WATER AND WASTE DEPARTMENT

COMMUNITY ROW WASTEWATER PUMPING STATION
 2017 UPGRADES
 SITE PLAN
 TEMPORARY BYPASS PUMPING

| | | | |
|---------------------|-------|------|------|
| CITY DRAWING NUMBER | SHEET | REV. | SIZE |
| 1-0130L-C0001 | 001 | 00 | A1 |