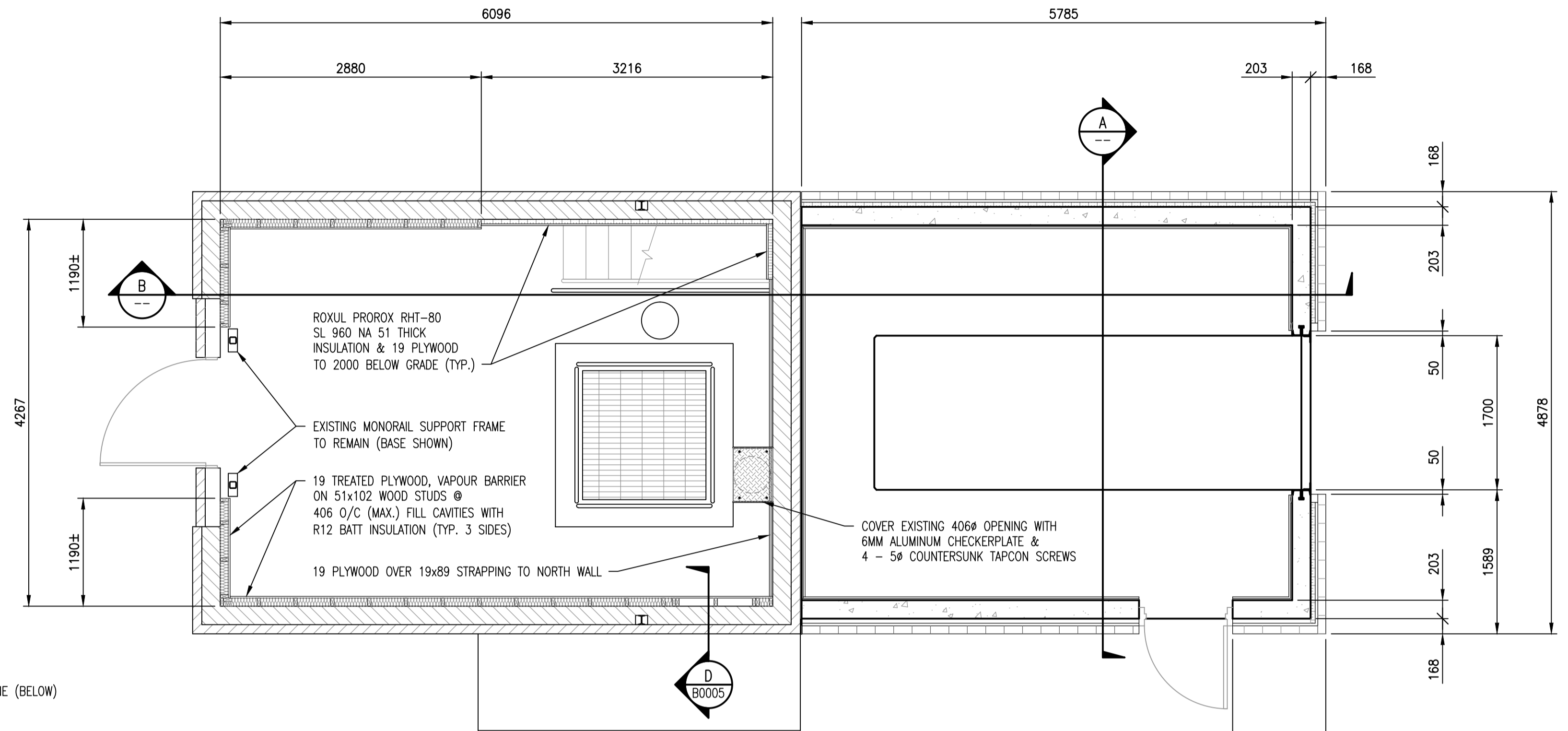
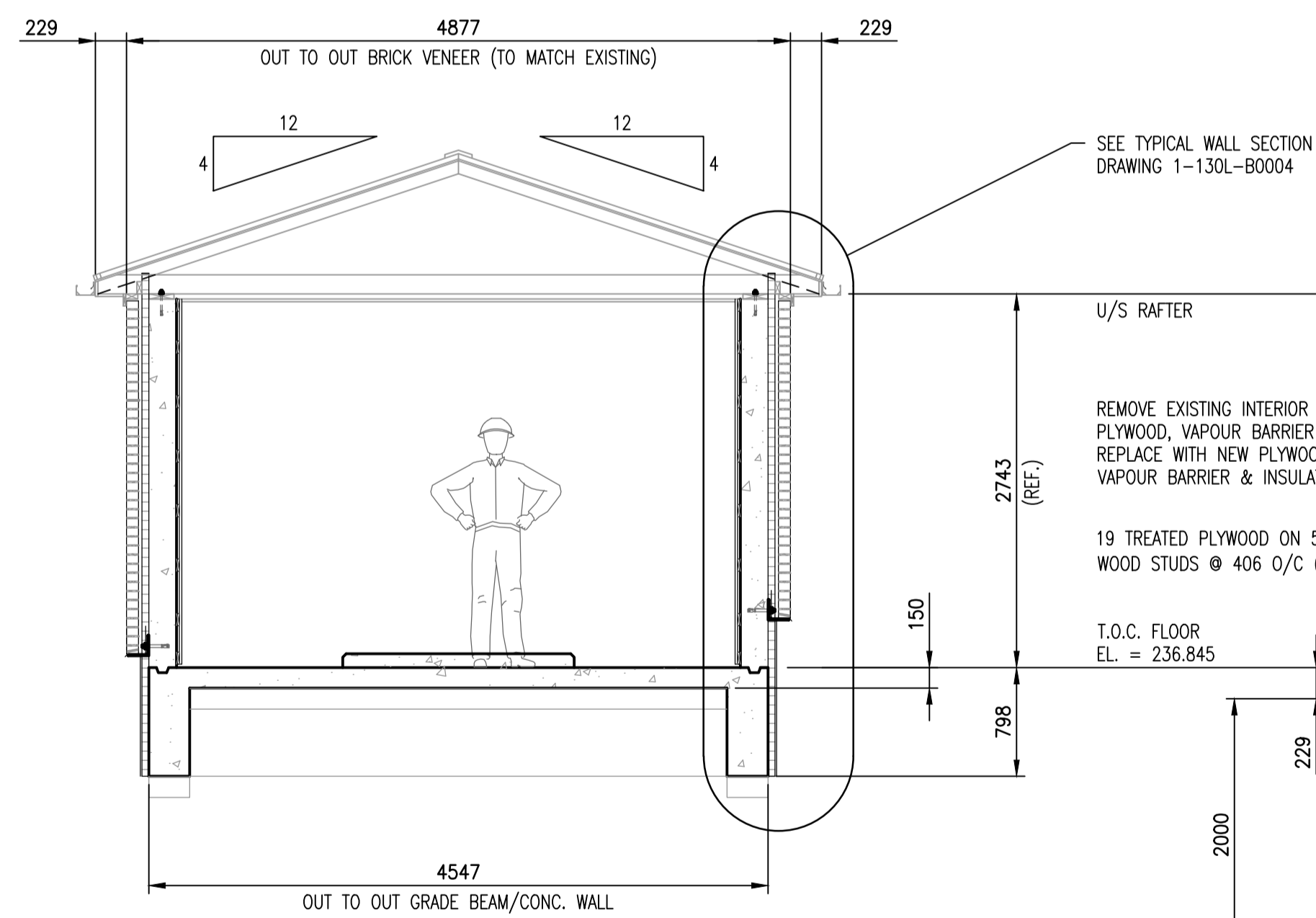


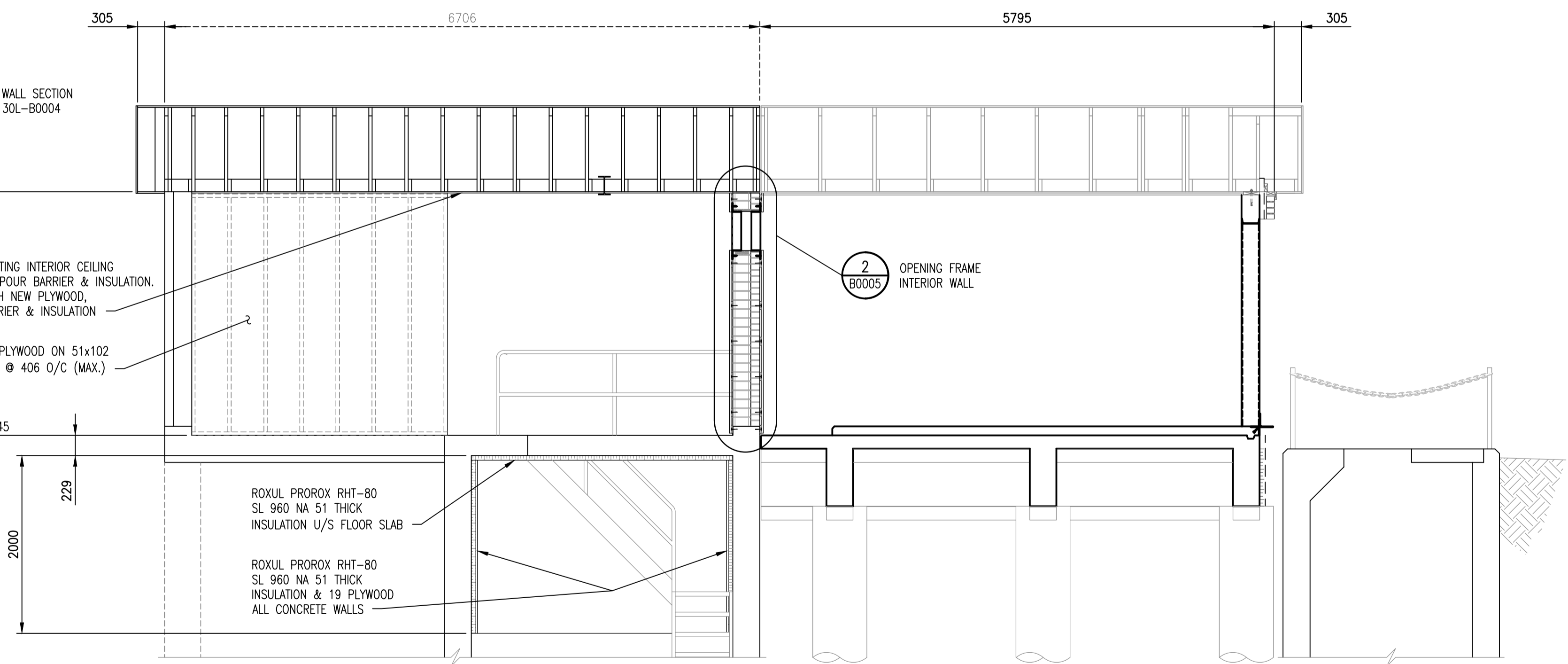
PLAN - ROOF FRAMING
1 : 40



PLAN
1 : 40



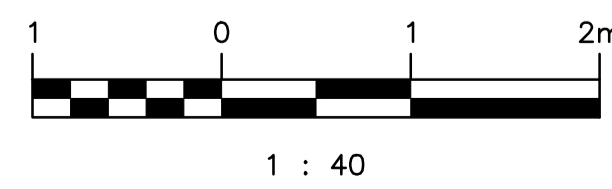
A SECTION
1 : 40



B SECTION
1 : 40

DRAWING NUMBER	REFERENCE DRAWINGS
401	CHARLESWOOD INTERCEPTOR SUPERSTRUCTURE DETAILS FOR PUMPING STATION
400B	CHARLESWOOD INTERCEPTOR PUMPING STATION AT COMMUNITY ROW & ROBLIN BLVD.
1-0130L-B0004	PUMPING STATION UPGRADES - PUMPHOUSE - DETAILS
1-0130L-B0002	PUMPING STATION UPGRADES - PUMPHOUSE EXTERIOR - PLAN AND ELEVATIONS
1-0130L-S0002	PUMPING STATION UPGRADES - NOTES SHEET 2
1-0130L-S0001	PUMPING STATION UPGRADES - NOTES SHEET 1

PROJECT SPECIFIC



NO.	REVISIONS	DATE	DESIGN	CHECK
00	ISSUED FOR TENDER, BID OPP. 639-2017	2017-07-25	TD	BJC

 SNC-LAVALIN INC. 148 Nature Park Way Winnipeg, MB, Canada R3P 0X7 204-786-8080	
DESIGNED BY: T. DEGER	CHECKED BY: B. CLEVEN
DRAWN BY: B. DICKSON	APPROVED BY: B. CLEVEN
SCALE: 1:40	ISSUED FOR CONSTRUCTION
DATE: 2017-05-15	DATE:
CONSULTANT NO.:	

ENGINEER'S SEAL
PRELIMINARY
NOT TO BE
USED FOR
CONSTRUCTION

 THE CITY OF WINNIPEG WATER AND WASTE DEPARTMENT	
COMMUNITY ROW WASTEWATER PUMPING STATION 2017 UPGRADES PUMPHOUSE PLAN AND ELEVATIONS	
CITY DRAWING NUMBER 1-0130L-B0003	SHEET REV. SIZE 001 00 A1