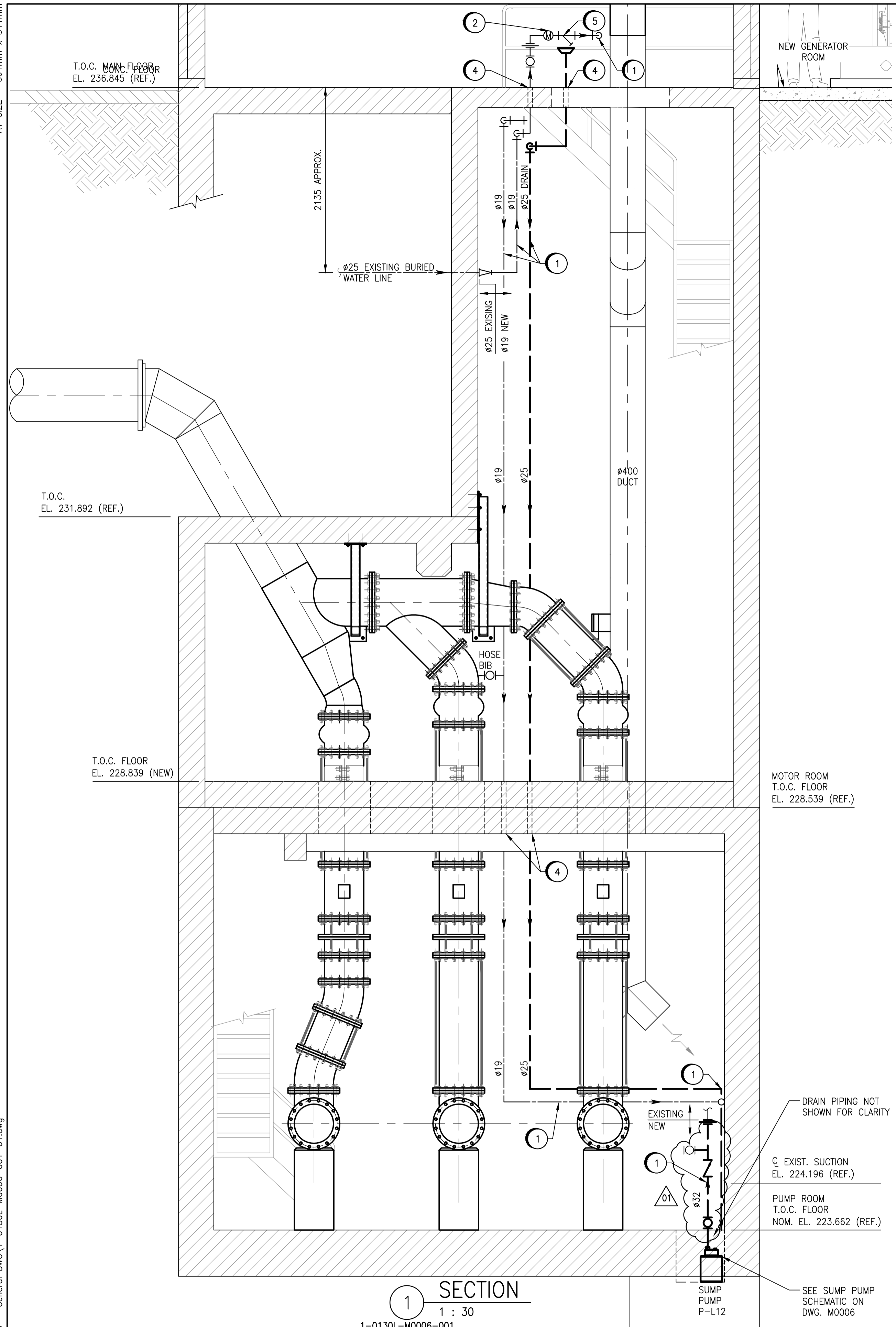
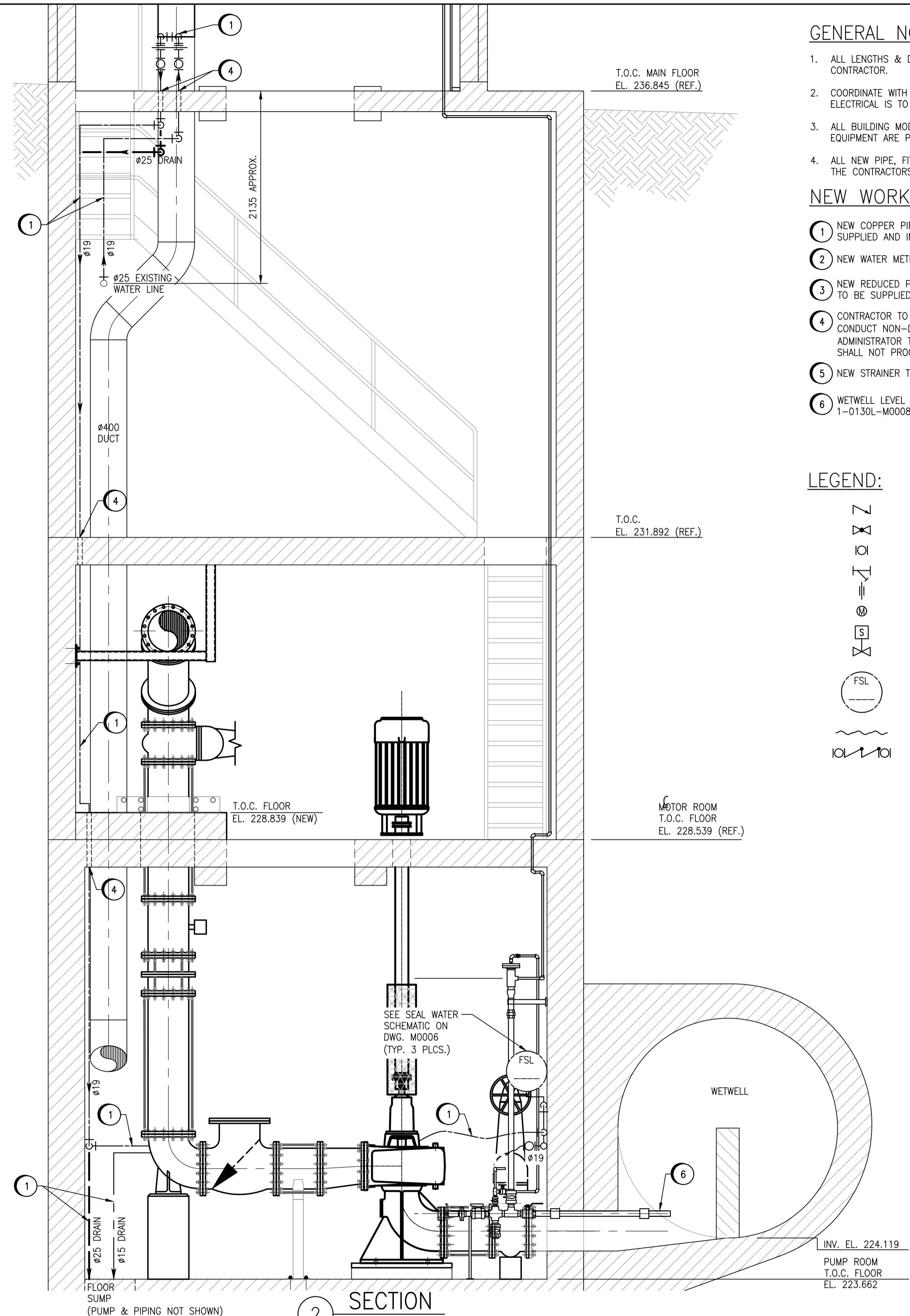


A1 SIZE - 594mm x 841mm

LAST SAVE: 2017/08/09 - 2:09pm
 PATH: M:\644548\MENG\45MEC\DD - General DWG\1-0130L-M0006-001-01.dwg



1 SECTION
 1 : 30
 1-0130L-M0006-001



2 SECTION
 1 : 30
 1-0130L-M0006-001

GENERAL NOTES:

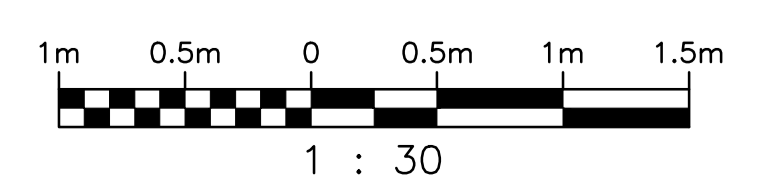
1. ALL LENGTHS & DIMENSIONS SHOWN ARE TO BE FIELD CONFIRMED BY CONTRACTOR.
2. COORDINATE WITH DIVISION 26 WHERE EQUIPMENT THAT REQUIRES NEW ELECTRICAL IS TO BE INSTALLED.
3. ALL BUILDING MODIFICATIONS REQUIRED FOR THE INSTALLATION OF MECHANICAL EQUIPMENT ARE PART OF THE CONTRACTORS SCOPE OF WORK.
4. ALL NEW PIPE, FITTINGS, FLANGES & SUPPORTS TO BE PAINTED AS PART OF THE CONTRACTORS SCOPE OF WORK.

NEW WORK NOTES:

1. NEW COPPER PIPING, VALVES, INSTRUMENTS, FITTINGS, HOSES & SUPPORTS TO BE SUPPLIED AND INSTALLED BY CONTRACTOR.
2. NEW WATER METER TO BE SUPPLIED BY OTHERS AND INSTALLED BY CONTRACTOR.
3. NEW REDUCED PRESSURE ZONE ASSEMBLY, DRAIN PIPING, FITTINGS & SUPPORTS TO BE SUPPLIED AND INSTALLED BY CONTRACTOR.
4. CONTRACTOR TO CORE DRILL HOLE FOR PIPING. CONTRACTOR IS RESPONSIBLE TO CONDUCT NON-DESTRUCTIVE TEST (NDT) TO IDENTIFY REBAR LOCATIONS. CONTRACT ADMINISTRATOR TO BE CONTACTED/INFORMED OF REBAR LOCATIONS. CORE DRILLING SHALL NOT PROCEED UNTIL CONTRACT ADMINISTRATOR APPROVES.
5. NEW STRAINER TO BE SUPPLIED BY AND INSTALLED BY CONTRACTOR.
6. WETWELL LEVEL TRANSMITTER AND SIGHT GLASS. FOR DETAILS SEE DWG. 1-0130L-M0008-001.

LEGEND:

- CHECK VALVE
- GLOBE VALVE
- BALL VALVE
- STRAINER
- UNION
- METER
- SOLENOID VALVE
- LOW FLOW SWITCH
- TUBING
- REDUCED PRESSURE ZONE ASSEMBLY



NO.	REVISIONS	DATE	DESIGN	CHECK
01	ADDENDUM #2 - REVISE SUMP PUMP PIPING	2017-08-09	FZ	BJC
00	ISSUED FOR TENDER, BID OPP. 639-2017	2017-07-25	FZ	BJC

 SNC-LAVALIN INC. 148 Nature Park Way Winnipeg, MB, Canada R3P 0X7 204-786-8080	
DESIGNED BY: F. ZURZOLO	CHECKED BY: B. CLEVEN
DRAWN BY: C. FETTERLY	APPROVED BY: B. CLEVEN
SCALE: 1 : 30	ISSUED FOR CONSTRUCTION
DATE: 2017/04/21	BY:
CONSULTANT NO.:	DATE:

ENGINEER'S SEAL
PRELIMINARY
 NOT TO BE
 USED FOR
 CONSTRUCTION

THE CITY OF WINNIPEG
 WATER AND WASTE DEPARTMENT

COMMUNITY ROW WASTEWATER PUMPING STATION
 2017 UPGRADES
 SECTIONS
 MECHANICAL - UTILITIES
 MOTOR ROOM & PUMP ROOM - NEW WORK

CITY DRAWING NUMBER: 1-0130L-M0007
 SHEET: 001
 REV.: 01
 SIZE: A1