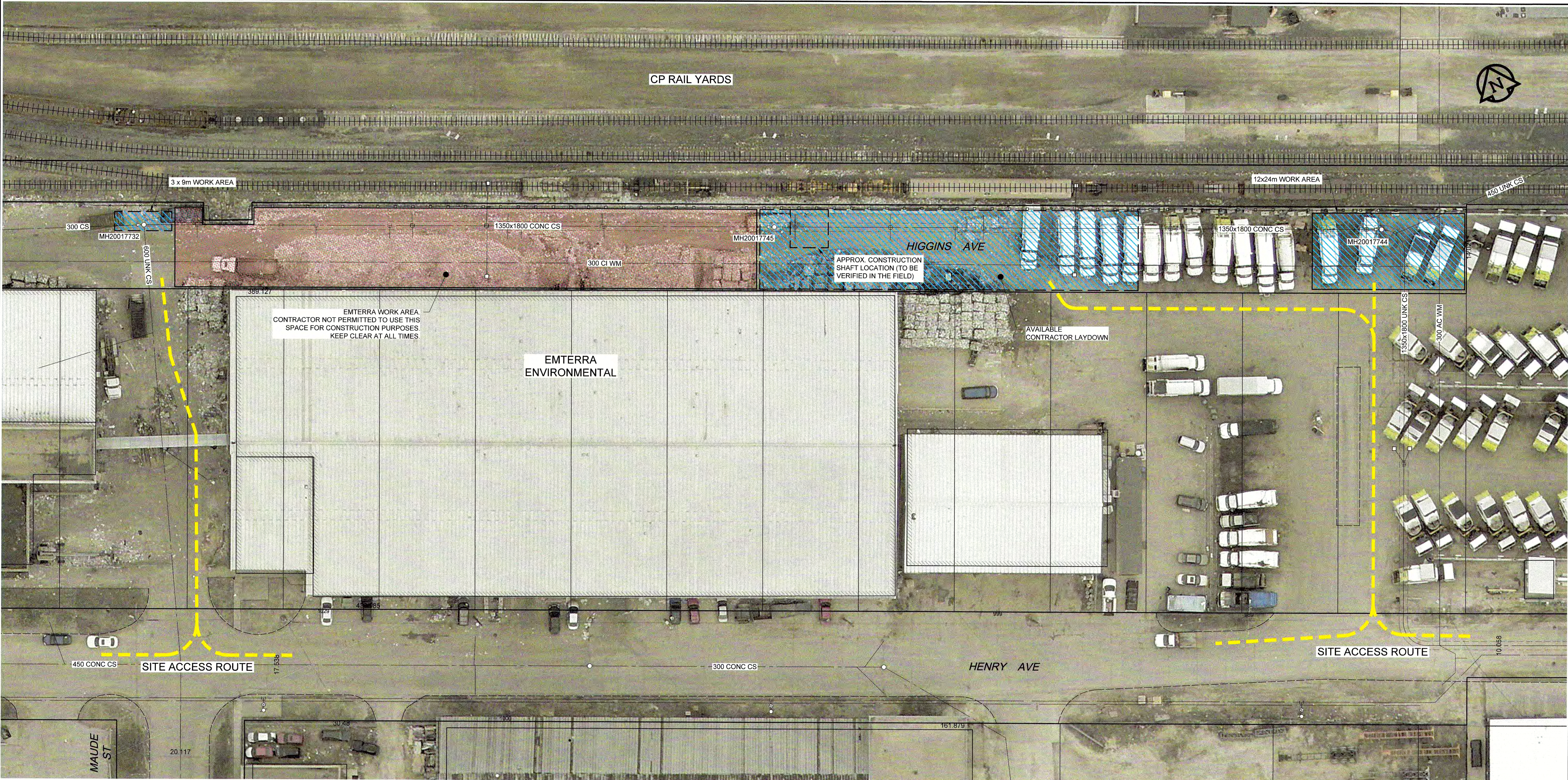


D SIZE 22" x 34" 659mm x 864mm

PLOT: 73172017 4:59:43 PM

AECOM REVIEW DRFT CHK
AECOM FILE NAME: 60528374-SHT-00-0000-C-1003.dwg Saved By: ccopcekl



- GENERAL CONSTRUCTION NOTES:**
- RESTORE SITE TO EXISTING CONDITIONS UPON COMPLETION OF WORK
 - ACCESS SHAFT MUST BE DESIGNED AND CONSTRUCTED IN ACCORDANCE WITH THE SPECIFICATIONS
 - CONTRACTOR SHALL NOT ENTER CPR PROPERTY WITHOUT WRITTEN AUTHORIZATION FROM CPR
 - CONTRACTOR SHALL SECURE THEIR WORK SITE(S) AT ALL TIMES
 - CONTRACTOR SHALL ADHERE TO EMTERRA ENVIRONMENTAL HEALTH AND SAFETY REQUIREMENTS WHEN WORKING ON EMTERRA PROPERTY (OUTSIDE OF DESIGNATED WORK AREAS)



BID OPPORTUNITY NO. 558-2017

METRIC
WHOLE NUMBERS INDICATE MILLIMETRES
DECIMALIZED NUMBERS INDICATE METRES

EXISTING	LEGEND - PLAN	NEW	EXISTING	LEGEND - PLAN	NEW	EXISTING	LEGEND - PROFILE	NEW
150 WM	WATERMAIN	150 WM	150 WM	WATERMAIN	150 WM	150 WM	WATERMAIN	150 WM
⊕	HYDRANT	⊕	⊕	HYDRANT	⊕	⊕	HYDRANT	⊕
⊙	VALVE	⊙	⊙	VALVE	⊙	⊙	VALVE	⊙
300 LDS	LAND DRAINAGE SEWER	300 LDS	300 LDS	LAND DRAINAGE SEWER	300 LDS	300 LDS	LAND DRAINAGE SEWER	300 LDS
250 WWS	WASTE WATER SEWER	250 WWS	250 WWS	WASTE WATER SEWER	250 WWS	250 WWS	WASTE WATER SEWER	250 WWS
○	MANHOLE	●	○	MANHOLE	●	○	MANHOLE	●
□	CATCH BASIN	■	□	CATCH BASIN	■	□	CATCH BASIN	■
△	CURB INLET	▲	△	CURB INLET	▲	△	CURB INLET	▲
---	CULVERT	---	---	CULVERT	---	---	CULVERT	---
---	PIPE ABANDONMENTS	---	---	PIPE ABANDONMENTS	---	---	PIPE ABANDONMENTS	---
+	SURVEY BAR	+	+	SURVEY BAR	+	+	SURVEY BAR	+
⊕	CURB STOP	⊕	⊕	CURB STOP	⊕	⊕	CURB STOP	⊕
⊕	REDUCER	⊕	⊕	REDUCER	⊕	⊕	REDUCER	⊕
⊕	COUPLING	⊕	⊕	COUPLING	⊕	⊕	COUPLING	⊕
⊕	ANODE	⊕	⊕	ANODE	⊕	⊕	ANODE	⊕
⊕	HYDRO	⊕	⊕	HYDRO	⊕	⊕	HYDRO	⊕
⊕	MTS	⊕	⊕	MTS	⊕	⊕	MTS	⊕
⊕	GAS	⊕	⊕	GAS	⊕	⊕	GAS	⊕
⊕	TESTHOLE	⊕	⊕	TESTHOLE	⊕	⊕	TESTHOLE	⊕
⊕	LAMP STANDARD	⊕	⊕	LAMP STANDARD	⊕	⊕	LAMP STANDARD	⊕
⊕	TREE	⊕	⊕	TREE	⊕	⊕	TREE	⊕

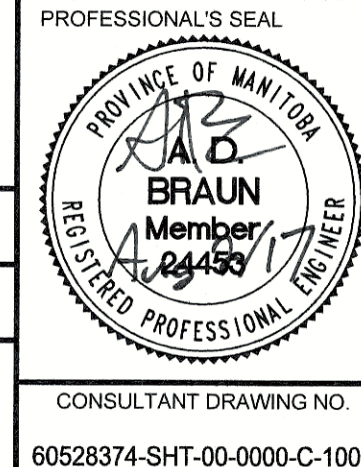
LOCATION APPROVED
UNDERGROUND STRUCTURES

SUPR. U/G STRUCTURES	DATE
COMMITTEE	

NOTE:
LOCATION OF UNDERGROUND STRUCTURES AS SHOWN ARE BASED ON THE BEST INFORMATION AVAILABLE. BUT NO GUARANTEE IS GIVEN THAT ALL EXISTING UTILITIES ARE SHOWN OR THAT THE GIVEN LOCATIONS ARE EXACT. CONFIRMATION OF EXISTENCE AND EXACT LOCATION OF ALL SERVICES MUST BE OBTAINED FROM THE INDIVIDUAL UTILITIES BEFORE PROCEEDING WITH CONSTRUCTION.



DESIGNED BY	ADB	CHECKED BY	[Signature]
DRAWN BY	KLC	APPROVED BY	[Signature]
HOR. SCALE	1:250	RELEASED FOR CONSTRUCTION	[Signature]
VERT. SCALE	1:50	DATE	AUG 2/17



THE CITY OF WINNIPEG
WATER AND WASTE DEPARTMENT

2017 TRENCHLESS REHABILITATION OF NON-CIRCULAR COMBINED SEWERS CONTRACT 1
HIGGINS AVENUE
SITE ACCESS PLAN

SHEET 1 OF 4
CITY DRAWING NUMBER 11632
REV 0