



Figure 1 - MH50008490 (Dawson Rd) - General Location



Figure 2 - MH50008490 (Dawson Rd) - Riser Condition Requiring Stabilization



Figure 3 - MH50008491 (Dawson Rd) - General Location



Figure 4 - MH20017732 (Higgins Av) - General Location (1)



Figure 5 - MH20017732 (Higgins Av) - General Location (2)



Figure 6 - MH20017745 (Higgins Av) - General Location



Figure 7 - MH20017744 (Higgins Av) - General Location



Figure 8 - MH20017744 (Higgins Av) - Riser Condition Requiring Stabilization



Figure 9 - S-MA20019733 (Higgins Av) - General Condition w/ Spalling



Figure 10 - S-MA20019733 (Higgins Av) - General Condition w/ Encrusted Service Connection



Figure 11 - S-MA20019733 (Higgins Av) - General Condition

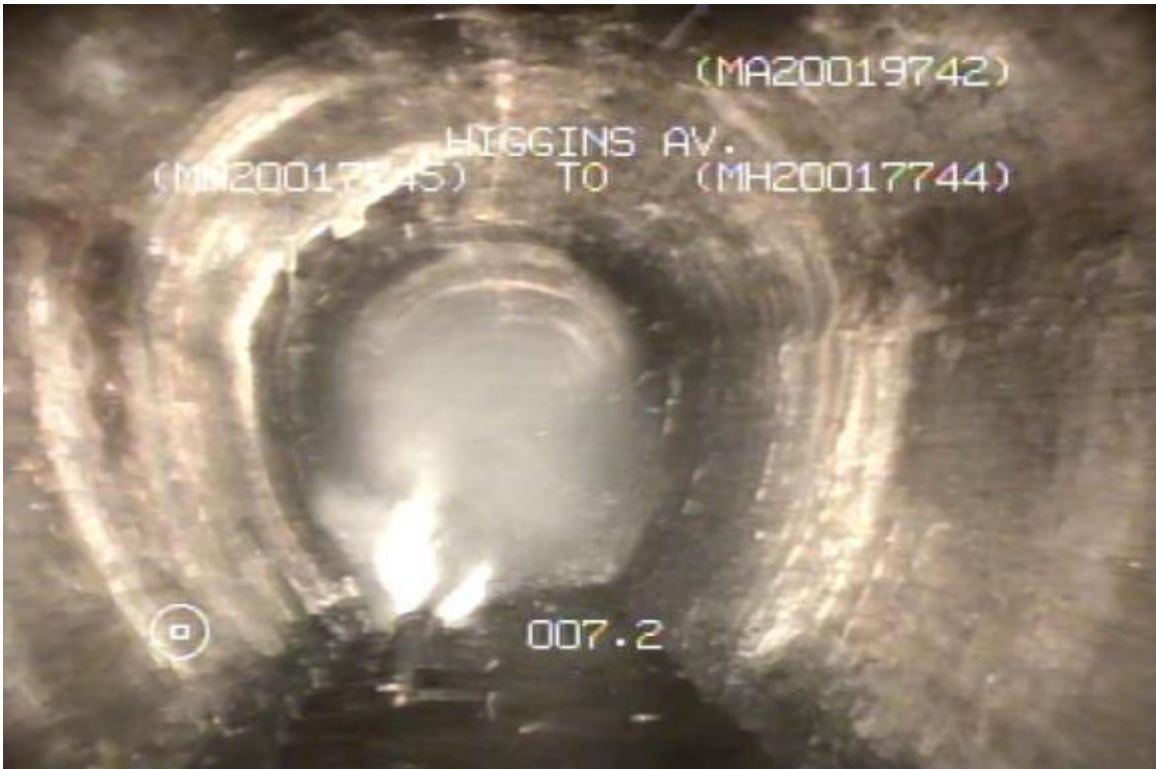


Figure 12 - S-MA20019742 (Higgins Av) - General Condition



Figure 13 - S-MA20019742 (Higgins Av) - General Condition w/ Encrusted Service Connection



Figure 14 - S-MA50010470 (Dawson Rd) - General Condition



Figure 15 - S-MA50010470 (Dawson Rd) – Missing Section of Existing Brick Invert Liner



Figure 16 - S-MA50010470 (Dawson Rd) - General Condition w/ Encrusted Service Connection