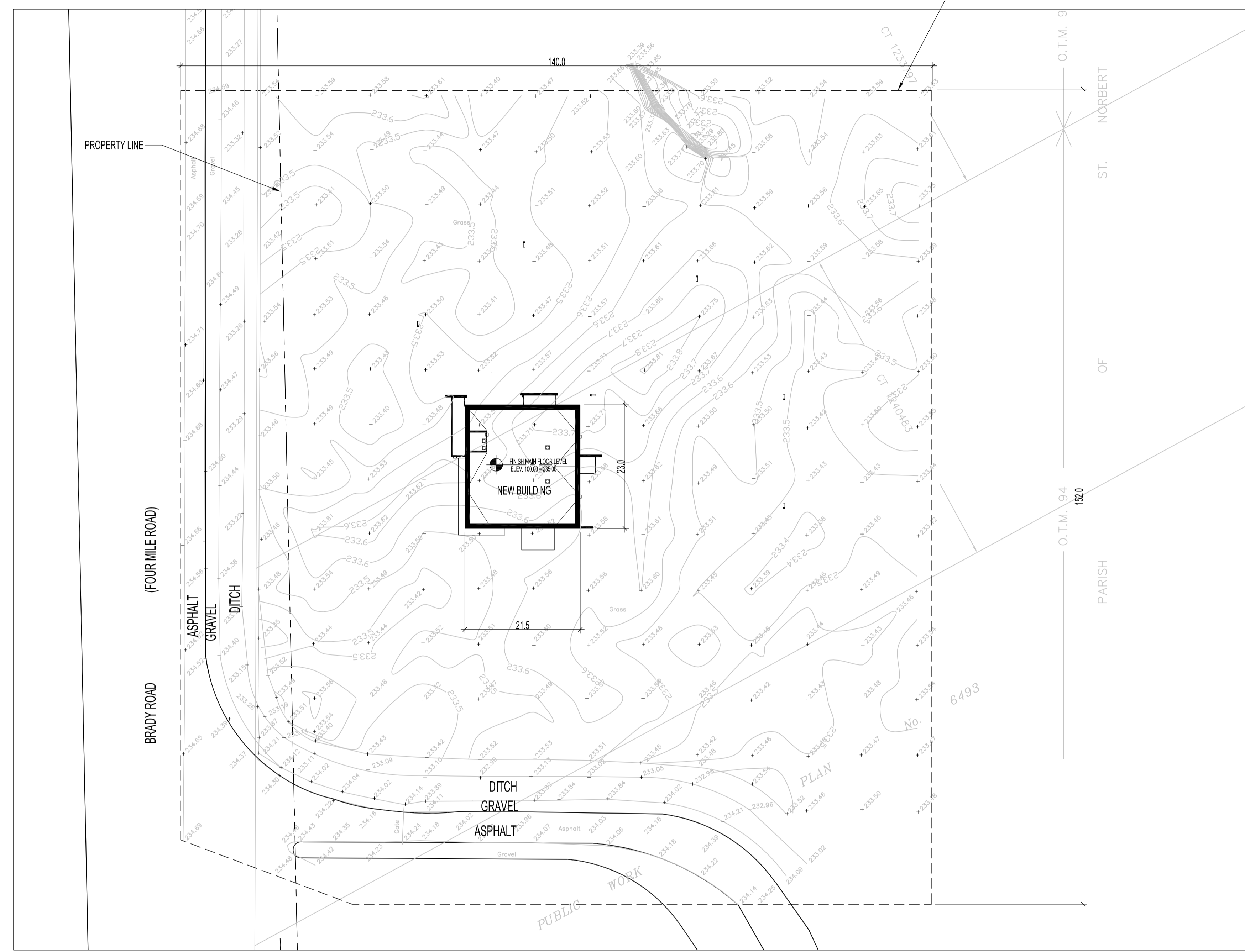


PERIMETER HIGHWAY

BRADY ROAD

PROPOSED BUILDING LOCATION. SEE LARGE PLAN

PARTIAL SITE PLAN
SCALE: N.T.S.



1 SITE - TOPOGRAPHICAL SURVEY
SCALE: 1:500

SITE NOTE:
LOCATIONS OF EXISTING ROADS &
PROPERTY LINES ARE ESTIMATED.

METRIC
WHOLE NUMBERS ARE IN MILLIMETRES
DECIMALIZED NUMBERS ARE IN METRES
(UNLESS NOTED OTHERWISE)

| | | | |
|-----|-------------------------|-----|--------------|
| 0 | ISSUED FOR CONSTRUCTION | MMK | MAR 17, 2017 |
| No. | REVISION/DESCRIPTION | BY | DATE |

| | | | | |
|-------|------------|---------------|----------|----------|
| DRAWN | MMK | CHECKED | DESIGNED | APPROVED |
| DATE | 2016.08.30 | USER APPROVAL | | |

THE CITY OF WINNIPEG
PLANNING, PROPERTY AND
DEVELOPMENT DEPARTMENT
MUNICIPAL ACCOMMODATIONS DIVISION
3-65 GARRY STREET, R3C 4K4

PROJECT
BRADY ROAD LANDFILL
ADMINISTRATION BUILDING
DEVELOPMENT FOR BRADY LANDFILL
1777 BRADY ROAD

SHEET TITLE
SITE PLAN
EXISTING TOPOGRAPHICAL SURVEY

| | | |
|----------|-------------|-----------|
| SCALE | PROJECT No: | SHEET No: |
| AS SHOWN | 2015-037 | C1.0 |