

THIS DRAWING MUST NOT BE SCALED.
 THE GENERAL CONTRACTOR SHALL VERIFY ALL DIMENSIONS, DURING AND LEVELS PRIOR TO COMMENCEMENT OF WORK. ALL ERRORS AND OMISSIONS TO BE REPORTED TO NUMBER TEN ARCHITECTURAL GROUP BEFORE PROCEEDING.
 VARIATIONS AND MODIFICATIONS TO WORK SHOWN ON THESE DRAWINGS SHALL NOT BE CARRIED OUT WITHOUT WRITTEN PERMISSION OF NUMBER TEN ARCHITECTURAL GROUP.
 THIS DRAWING IS THE EXCLUSIVE PROPERTY OF NUMBER TEN ARCHITECTURAL GROUP AND THE COPYRIGHT IN THE SAME IS RESERVED TO THEM. IT MAY BE REPRODUCED ONLY WITH THE PERMISSION OF NUMBER TEN ARCHITECTURAL GROUP, IN WHICH CASE THE REPRODUCTION MUST BEAR THEIR NAME.

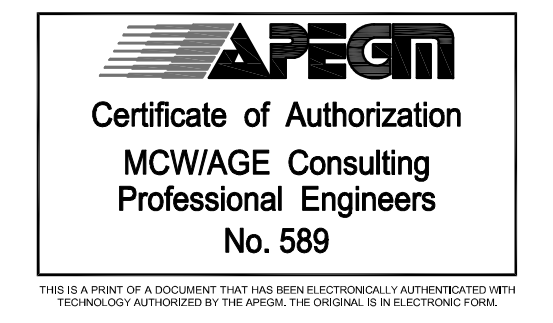
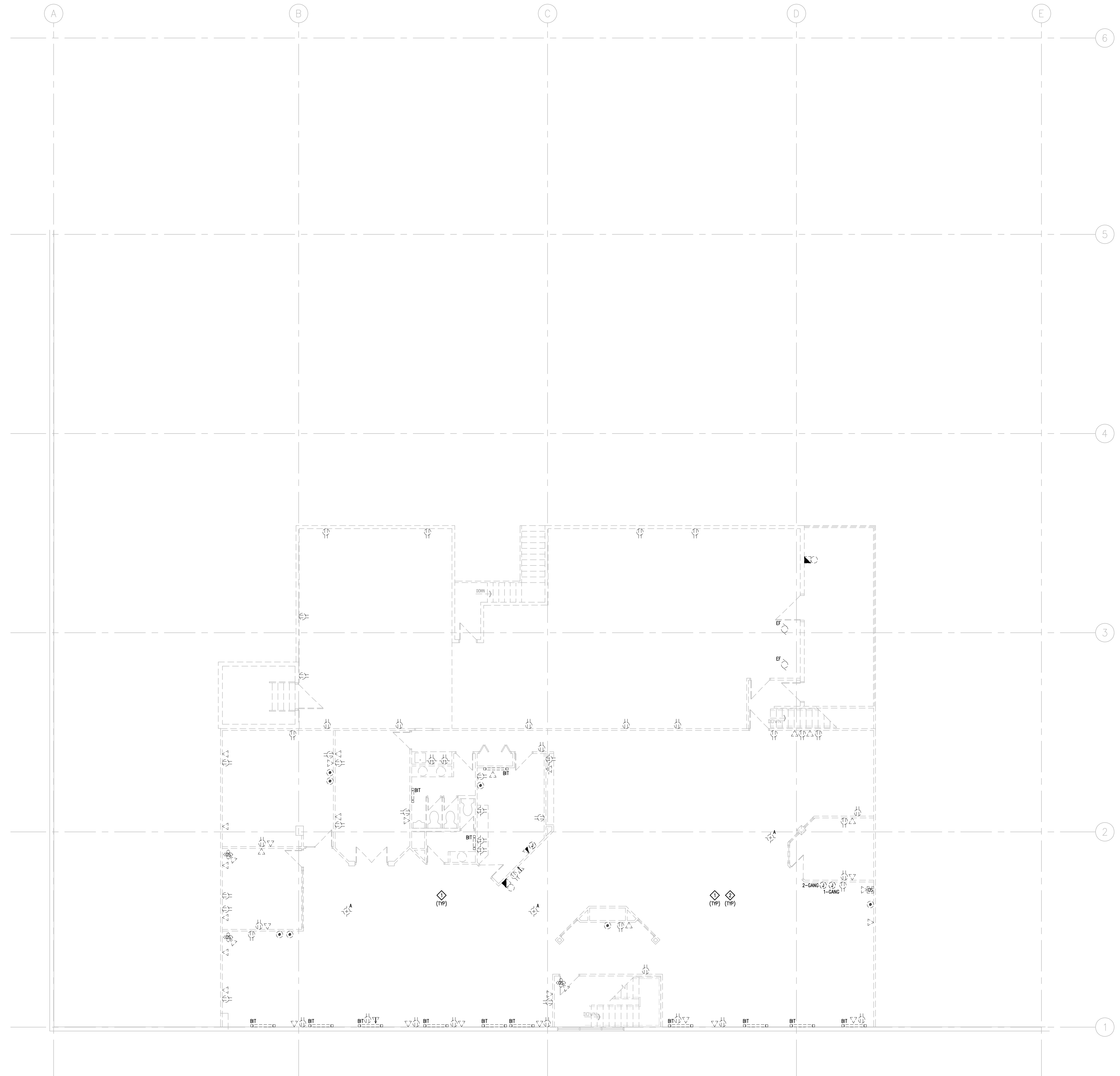
REVISED/ ISSUED/ PLOTTED	DATE
ISSUED FOR DECONSTRUCTION	2017.03.24
REVISION 1	2017.06.26

GENERAL NOTES:

1. NOT ALL DEVICES TO BE DEMOLISHED ARE NECESSARILY SHOWN. CONFIRM QUANTITIES/LOCATIONS ON SITE PRIOR TO TENDER.

NOTES:

1. DISCONNECT AND REMOVE IN FLOOR RACEWAYS C/W ASSOCIATED WIRING TO SOURCE.
2. ALL ELECTRICAL EQUIPMENT/DEVICES/ELECTRIC HEATERS/CCTV & CAMERAS/PA SYSTEM/ETC SHALL BE DISCONNECTED AND REMOVED FROM SITE C/W ASSOCIATED WIRING TO SOURCE UNLESS NOTED OTHERWISE.



number TEN architectural group number 10

Winnipeg Office: 204 942.0981
 Victoria Office: 250 360.2106

architecture • interior design • planning

850 EMPRESS BUILDING UPGRADE

850 EMPRESS STREET, WINNIPEG, MB

project

MEZZANINE PLAN - POWER & SYSTEMS DEMOLITION LAYOUT

sheet title

MCW / AGE
 Consulting Professional Engineers
 210-1821 Wellington Avenue
 Winnipeg, Manitoba, R3V 0G4
 Phone: (204) 778-7900 Fax: (204) 778-1119
 E-Mail: mcw_age@mcw-age.com

11661 consultant

MEZZANINE PLAN – POWER & SYSTEMS DEMOLITION LAYOUT
 SCALE: 1/8"=1'-0"

seal
 drawn by: ASR
 checked by: KEI
 project no. 2016094

scale: AS SHOWN
 date: JUNE 26/17
 sheet no. EDP2.1R1