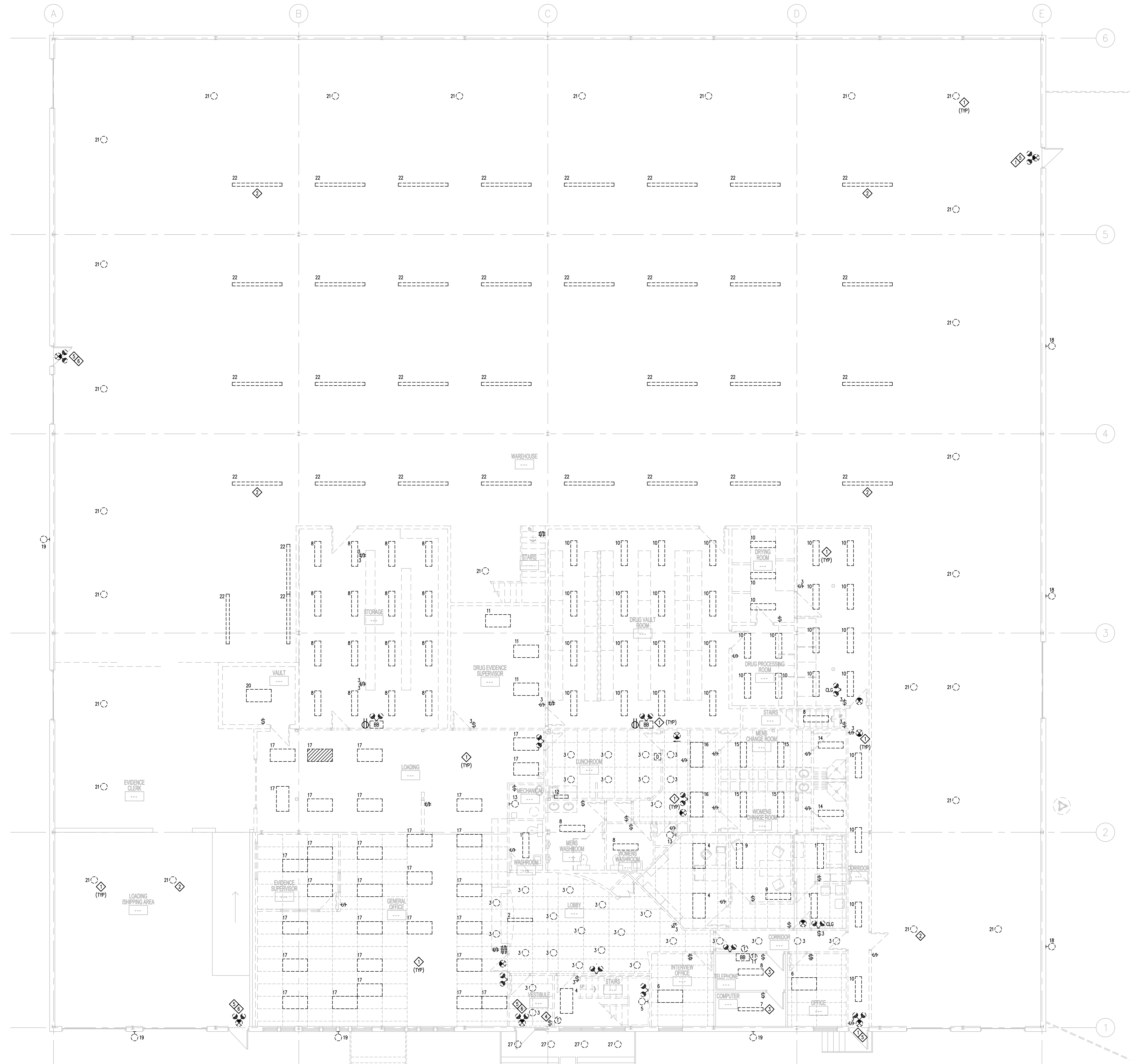


THIS DRAWING MUST NOT BE SCALED.
 THE GENERAL CONTRACTOR SHALL VERIFY ALL DIMENSIONS, DURINGS, AND LEVELS PRIOR TO COMMENCEMENT OF WORK. ALL ERRORS AND OMISSIONS TO BE REPORTED TO NUMBER TEN ARCHITECTURAL GROUP BEFORE PROCEEDING.
 VARIATIONS AND MODIFICATIONS TO WORK SHOWN ON THESE DRAWINGS SHALL NOT BE CARRIED OUT WITHOUT WRITTEN PERMISSION OF NUMBER TEN ARCHITECTURAL GROUP.
 THIS DRAWING IS THE EXCLUSIVE PROPERTY OF NUMBER TEN ARCHITECTURAL GROUP AND THE COPYRIGHT IN THE SAME REMAINS RESERVED TO THEM. IT MAY BE REPRODUCED ONLY WITH THE PERMISSION OF NUMBER TEN ARCHITECTURAL GROUP, IN WHICH CASE THE REPRODUCTION MUST BEAR THEIR NAME.

REVISED/ ISSUED/ PLOTTED	DATE
ISSUED FOR DECONSTRUCTION	2017.03.24
REVISION 1	2017.06.26



- GENERAL NOTES:**
- NOT ALL DEVICES TO BE DEMOLISHED ARE NECESSARILY SHOWN. CONFIRM QUANTITIES/LOCATIONS ON SITE PRIOR TO TENDER.
- NOTES:**
- ALL INTERIOR LUMINAIRES/EMERGENCY LIGHTING/EXIT SIGNS C/W CONTROLS (SWITCHES, ETC) SHALL BE DISCONNECTED AND REMOVED FROM SITE C/W ASSOCIATED WIRING TO SOURCE UNLESS DENOTED AS NIGHT LIGHT.
 - NIGHT LIGHT. RETAIN WIRING OR REMIRE AS REQUIRED.
 - RETAIN LUMINAIRE(S) C/W CONTROLS (SWITCHES, ETC) THIS ROOM.
 - PROVIDE NEW SWITCH(ES) TO CONTROL ALL NIGHT LIGHT LUMINAIRE(S)/CIRCUIT(S).
 - PROVIDE NEW SELF CONTAINED LED EMERGENCY LIGHT/PICTOGRAM EXIT SIGN WIRED AND CONNECTED TO AREA NIGHT LIGHTING CIRCUIT.
 - NEW EXIT SIGN LOCATION.



APEGM
 Certificate of Authorization
 MCW/AGE Consulting
 Professional Engineers
 No. 589

number TEN architectural group
 Winnipeg Office 204.942.0981
 Victoria Office 250.360.2106
 architecture • interior design • planning

850 EMPRESS BUILDING UPGRADE
 850 EMPRESS STREET, WINNIPEG, MB
project
MAIN FLOOR PLAN - LIGHTING DEMOLITION LAYOUT
sheet title
MCW / AGE
 Consulting Professional Engineers
 210-1621 Wellington Avenue
 Winnipeg, Manitoba, R3V 0G4
 Phone - (204) 778-7900 Fax - (204) 778-1119
 E-Mail: mcw_age@mcw.com
 11661
consultant

1 MAIN FLOOR PLAN - LIGHTING DEMOLITION LAYOUT
 EDL2.0 SCALE: 1/8"=1'-0"

seal
 drawn by: ASR
 checked by: KEI
 project no. 2016094
scale: AS SHOWN
date: JUNE 26/17
sheet no. EDL2.0R1