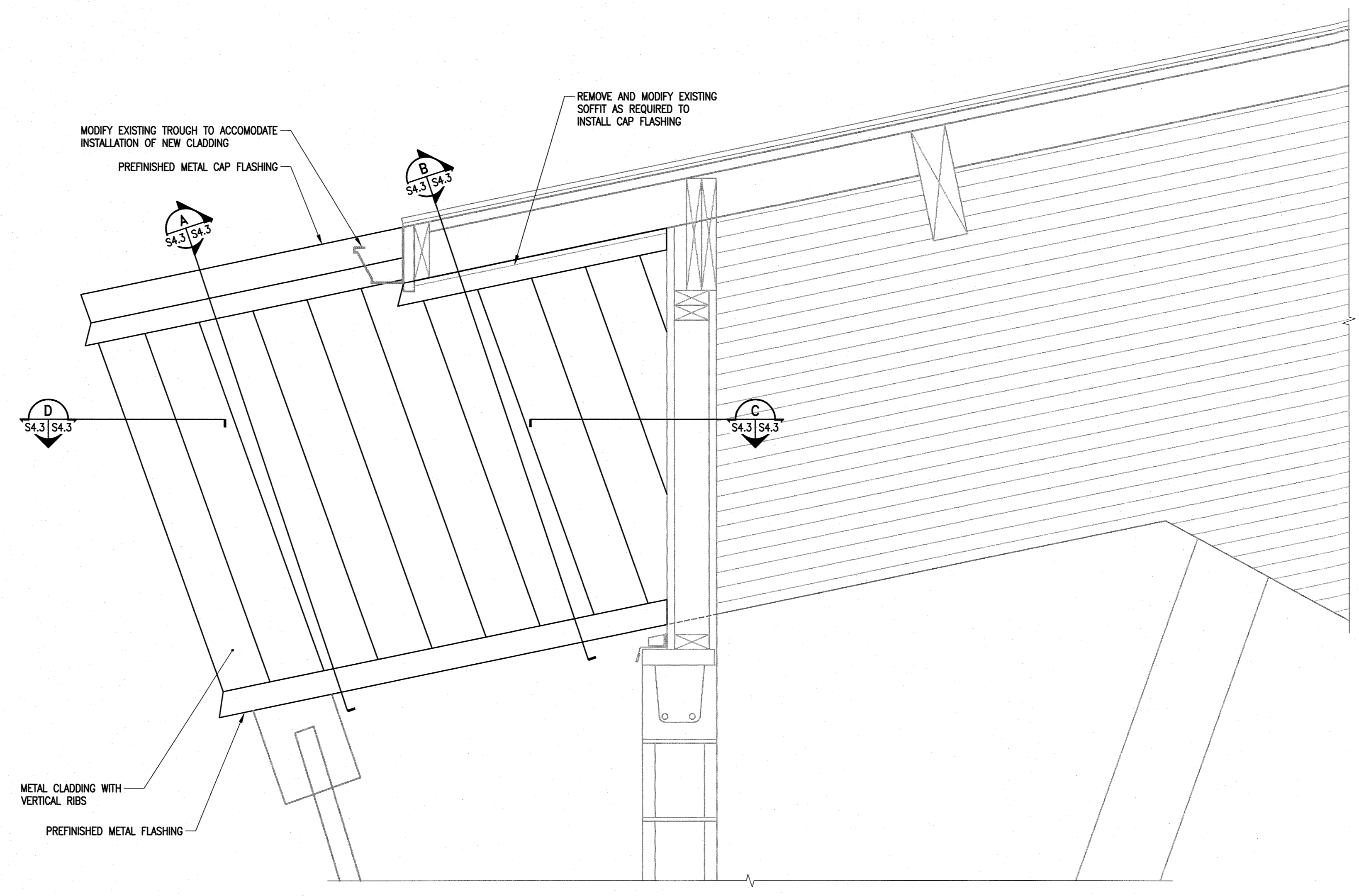
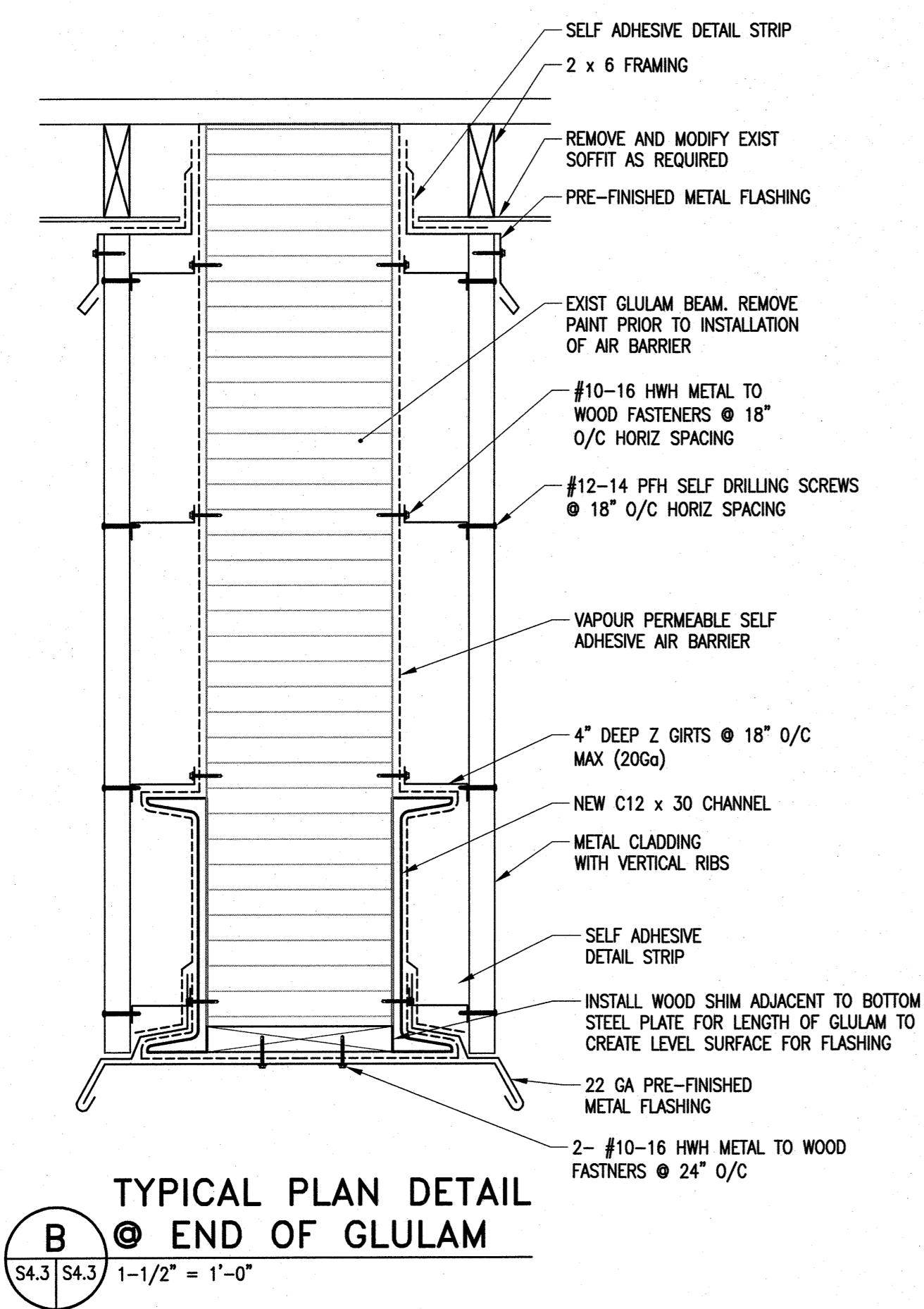


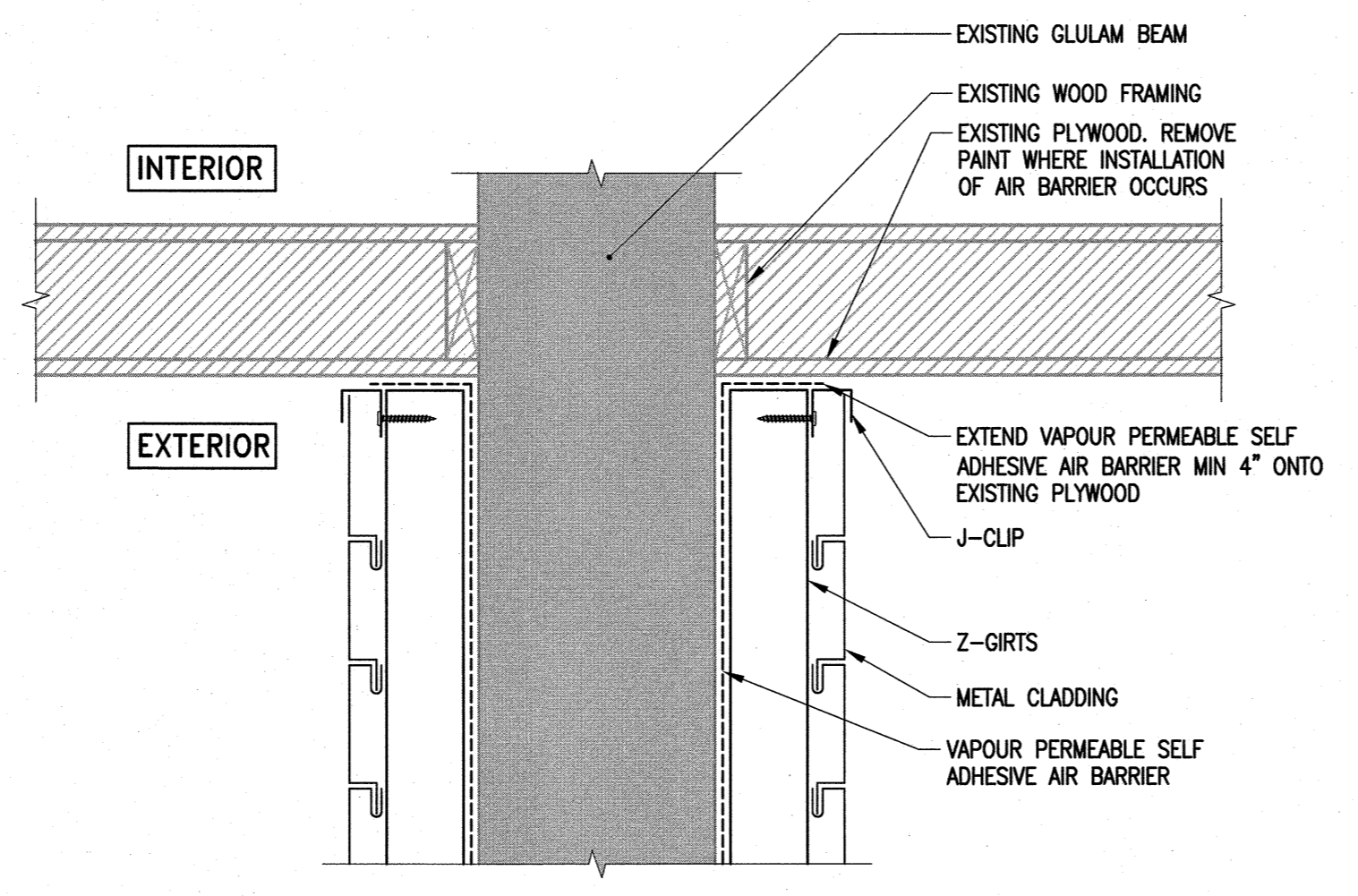
A
 TYPICAL PLAN DETAIL
 @ END OF GLULAM
 S4.3 S4.3 1-1/2" = 1'-0"



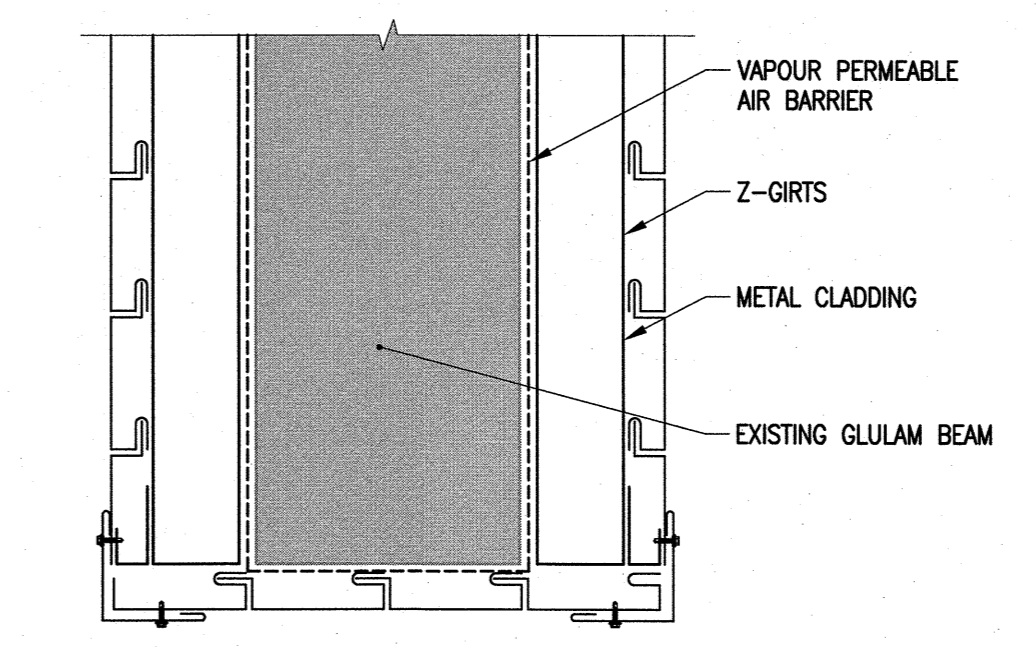
1
 TYPICAL GLULAM CLADDING REPAIR
 S2.1 S4.3 1-1/2" = 1'-0"



B
 TYPICAL PLAN DETAIL
 @ END OF GLULAM
 S4.3 S4.3 1-1/2" = 1'-0"



C
 TYPICAL PLAN DETAIL
 @ END OF GLULAM
 S4.3 S4.3 1-1/2" = 1'-0"

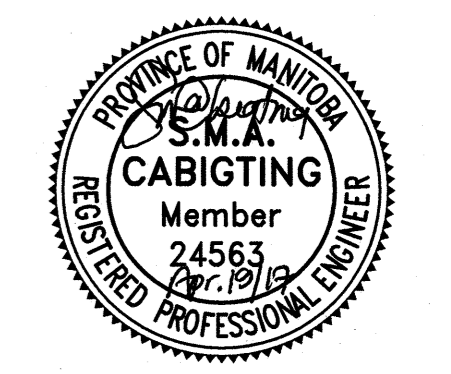


D
 TYPICAL PLAN DETAIL
 @ END OF GLULAM
 S4.3 S4.3 1-1/2" = 1'-0"

The General Contractor shall check & verify all dimensions and report any errors or omissions to the designers.

No.	Date	Issue/Revision	By
0	2017-04-19	ISSUED FOR CONSTRUCTION	SMC

APEGM
 Certificate of Authorization
 Crosier Kilgour & Partners Ltd.
 No. 235 Date: 2017-04-19



Consultant

300-275 Carlton Street
 Winnipeg, Manitoba R3C 5R6
 T 204. 943. 7501
 F 204. 943. 7507

Crosier Kilgour & Partners Ltd.
 CONSULTING STRUCTURAL ENGINEERS

Project
BERTRAND ARENA
 GLULAM REPAIRS
 294 BERTRAND STREET
 WINNIPEG, MANITOBA

Sheet Title
 SECTIONS & DETAILS

File	2017-0006	Date	2017-04-19
Design	SMC	Drawn	RJM
Revision	Sheet No.		
A	S4.3		