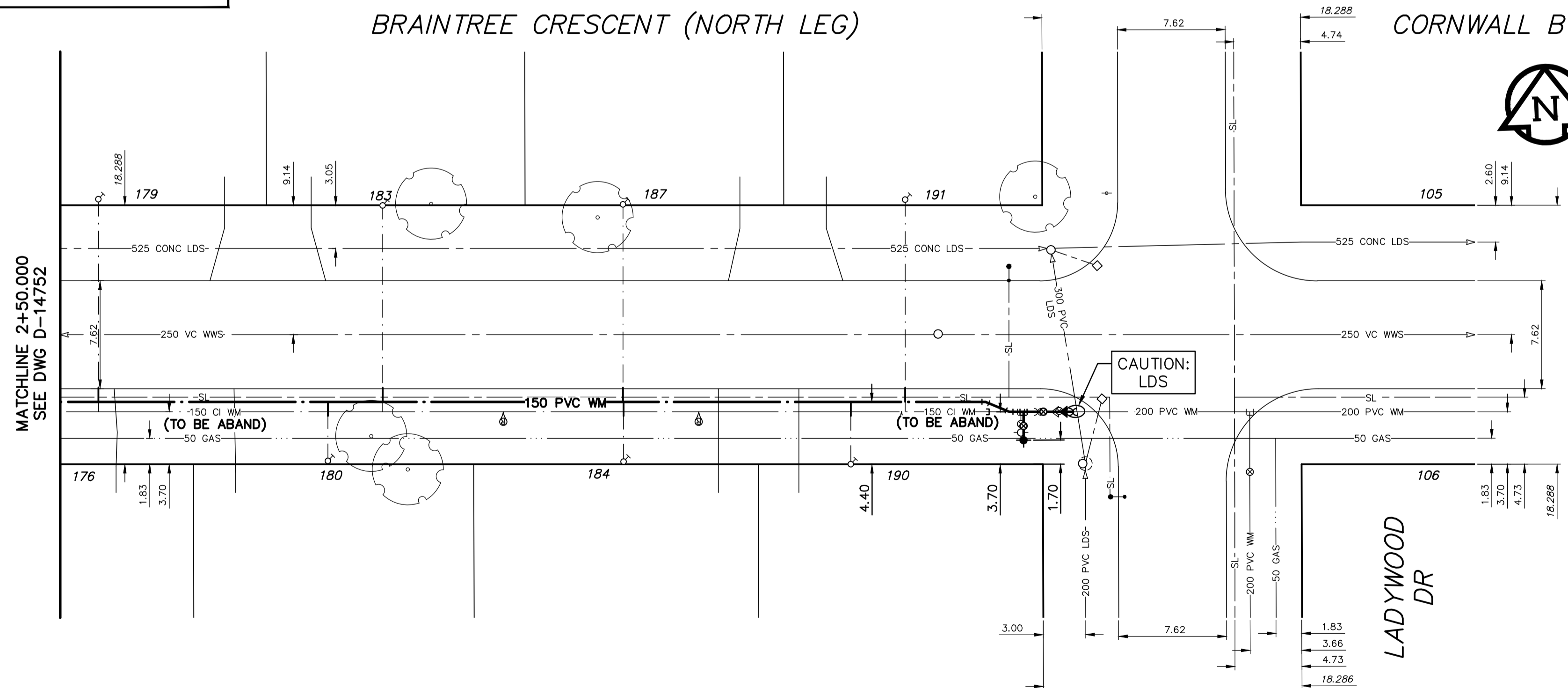


3+15.41 INSTALL 15-22.5" BEND
 3+17.10 REMOVE EXIST HYDRANT ASSEMBLY
 3+18.10 INSTALL HYDRANT ASSEMBLY (SD-006)
 3+18.47 INSTALL 150 VALVE
 3+19.468 W P LADYWOOD DR
 3+20.32 REMOVE EXIST 200X150 REDUCER
 3+20.62 REMOVE EXIST 200 VALVE
 3+20.88 INSTALL 200X150 REDUCER
 3+21.60 CONNECT TO EXIST 200 PVC WM
 3+25

NOTE: CHAINAGES SHOWN ARE ALONG S R OF BRAINTREE CRESCENT

BRAINTREE CRESCENT (NORTH LEG)

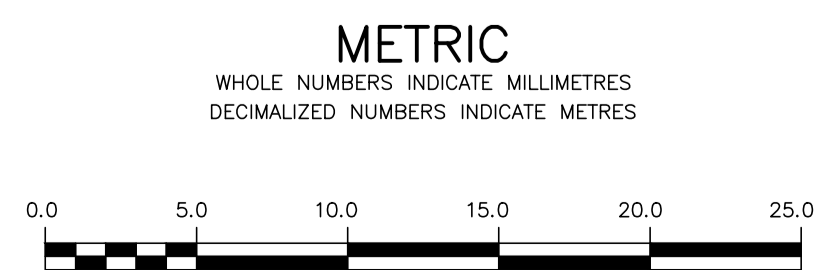
CORNWALL BV (NORTH LEG)



WATER SERVICE INFORMATION

ADDRESS	SIZE (mm) MATERIAL (STREET)	SIZE (mm) MATERIAL (PROP.)	SHORT & LONG MEASUREMENT	CORP. LOCATION	REMARKS
176 BRAINTREE CR RESIDENTIAL	-	20 CU	8.53 WEHL	-	RECONNECT SERVICE
179 BRAINTREE CR RESIDENTIAL	-	20 CU	3.60 EWHL	-	RECONNECT SERVICE
180 BRAINTREE CR RESIDENTIAL	-	20 CU	5.49 EWHL	-	RECONNECT SERVICE
183 BRAINTREE CR RESIDENTIAL	-	20 CU	8.20 WEHL	-	RECONNECT SERVICE
184 BRAINTREE CR RESIDENTIAL	-	20 CU	5.13 EWHL	-	RECONNECT SERVICE
187 BRAINTREE CR RESIDENTIAL	-	20 CU	8.00 WEHL	-	RECONNECT SERVICE
187 BRAINTREE CR RESIDENTIAL	-	20 CU	4.39 EWHL	-	RECONNECT SERVICE
190 BRAINTREE CR RESIDENTIAL	-	20 CU	0.76 EWHL	-	RECONNECT SERVICE
191 BRAINTREE CR RESIDENTIAL	-	20 CU	4.42 EWHL	-	RECONNECT SERVICE

* SERVICES TO BE RENEWED TO R. ALL OTHERS TO BE RECONNECTED



WARNING
 IF POWER EQUIPMENT OR EXPLOSIVES ARE TO BE USED FOR EXCAVATION ON THIS PROJECT THE CONTRACTOR MUST:
 1) NOTIFY THE GAS COMPANY OF THE PROPOSED LOCATION OF EXCAVATION.
 2) TAKE PRECAUTION TO AVOID DAMAGE TO GAS COMPANY INSTALLATIONS.
 SEE PROVINCIAL REGULATION 21072 FOR DETAILS

LOCATION APPROVED UNDERGROUND STRUCTURES
 SUPV. U/G STRUCTURES COMMITTEE DATE
 NOTE:
 LOCATION OF UNDERGROUND STRUCTURES AS SHOWN ARE BASED ON THE BEST INFORMATION AVAILABLE BUT NO GUARANTEE IS GIVEN THAT ALL EXISTING UTILITIES ARE SHOWN OR THAT THE GIVEN LOCATIONS ARE EXACT. CONFIRMATION OF EXISTENCE AND EXACT LOCATION OF ALL SERVICES MUST BE OBTAINED FROM THE INDIVIDUAL UTILITIES BEFORE PROCEEDING WITH CONSTRUCTION.

B.M. 39-032 ELEV. 238.871
 S.W. Cor. Moray St. & Silver Ave., Tbit. in N. Conc. foundation No. 65 Moray Village, 3 m W. & 0.1 m below brick of N.E. Cor. of apartment unit.

DESIGNED BY	JKH	CHECKED BY	HAK
DRAWN BY	DML	APPROVED BY	BWB
SCALE:	1:250		
HORIZONTAL	1:50		
VERTICAL	KAS ZUREK		
DATE	2017 05 11	DATE	2017 05 17

ENGINEERS
 GEOSCIENTISTS
 Certificate of Authorization
 MORRISON HERSHFIELD
 No. 1736

FOR INDEX SEE D-14739

NOTE: ALL VALVES TO BE INSTALLED COUNTER-CLOCKWISE TO CLOSE

ENGINEER'S SEAL
 ORIGINAL SIGNED BY H.A. KATZ
 2017 05 17

THE CITY OF WINNIPEG
 WATER AND WASTE DEPARTMENT
 ENGINEERING DIVISION

2017 WATER MAIN RENEWALS
 CONTRACT 9
BRAINTREE CRESCENT (N LEG)
 70 m W OF LADYWOOD DRIVE TO
 LADYWOOD DRIVE

SHEET 16 OF 21
 CITY DRAWING NUMBER
D14753