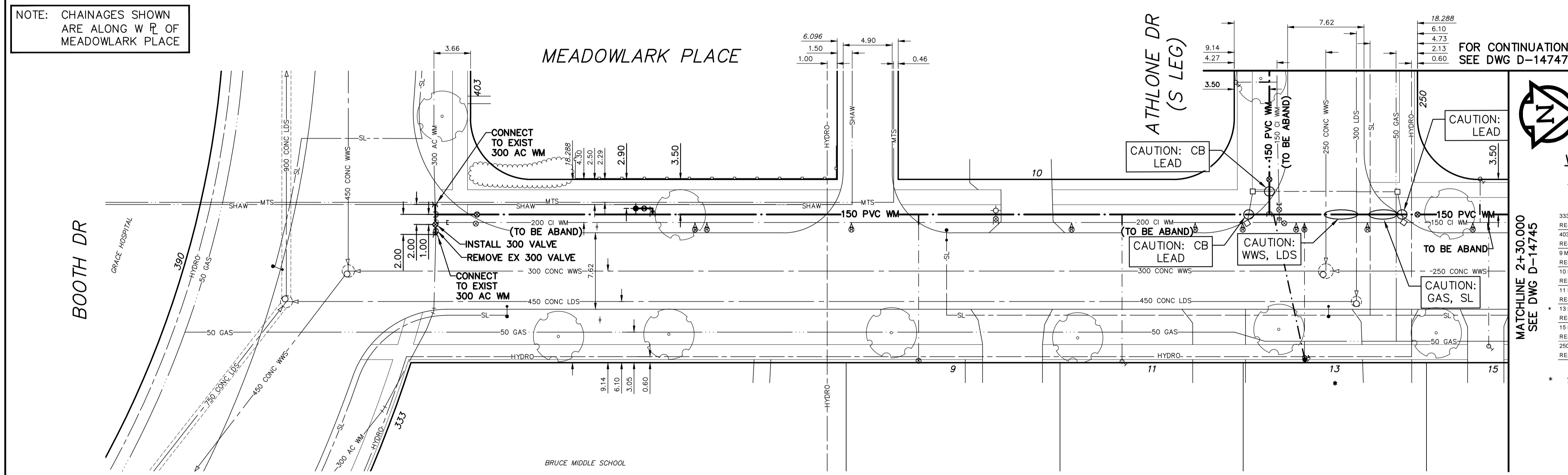


NOTE: CHAINAGES SHOWN ARE ALONG W.P. OF MEADOWLARK PLACE



WATER SERVICE INFORMATION					
ADDRESS	SIZE (mm) MATERIAL (STREET)	SIZE (mm) (PROP.)	SHORT & LONG MEASUREMENT	CORP. LOCATION	REMARKS
333 BOOTH DR	-	-	-	-	RECONNECT SERVICE
403 BOOTH DR	-	-	1.52 WEL HSE	-	RECONNECT SERVICE
9 MEADOWLARK PL	-	20	2.44 N S SIDE	-	RECONNECT SERVICE
RESIDENTIAL	-	CU	19.2 W HSE	-	-
10 MEADOWLARK PL	-	20	3.65 W E SIDE	-	RECONNECT SERVICE
RESIDENTIAL	-	CU	8.23 N S SIDE	-	-
11 MEADOWLARK PL	-	20	3.05 N OF S	-	RECONNECT SERVICE
RESIDENTIAL	-	CU	13.11 N 161 HYD N BOOTH	-	-
13 MEADOWLARK PL	-	20	3.35 N S SIDE	-	RENEW SERVICE TO PL
RESIDENTIAL	-	CU	-	-	-
15 MEADOWLARK PL	-	20	5.83 NSSL	-	RECONNECT SERVICE
RESIDENTIAL	-	CU	106.89 NAL BOOTH DR	-	-
250 ATHLONE DR	-	20	2.44 S OF S SIDE	-	RECONNECT SERVICE
RESIDENTIAL	-	CU	-	-	-



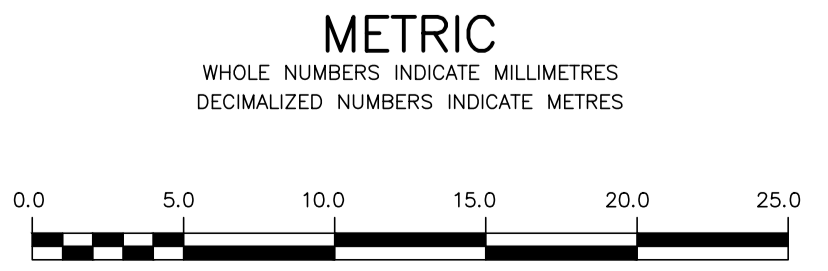
MATCHLINE 2+30.000 SEE DWG D-14745

* SERVICES TO BE RENEWED TO R.P. ALL OTHERS TO BE RECONNECTED

ENGINEERS GEOSCIENTISTS
 Certificate of Authorization
 MORRISON HERSHFIELD
 No. 1736

FOR INDEX SEE D-14739

NOTE: ALL VALVES TO BE INSTALLED COUNTER-CLOCKWISE TO CLOSE



WARNING
 IF POWER EQUIPMENT OR EXPLOSIVES ARE TO BE USED FOR EXCAVATION ON THIS PROJECT THE CONTRACTOR MUST:
 1) NOTIFY THE GAS COMPANY OF THE PROPOSED LOCATION OF EXCAVATION.
 2) TAKE PRECAUTION TO AVOID DAMAGE TO GAS COMPANY INSTALLATIONS.
 SEE PROVINCIAL REGULATION 2107/2 FOR DETAILS

LOCATION APPROVED UNDERGROUND STRUCTURES
 SUPV. U/G STRUCTURES COMMITTEE DATE
 NOTE:
 LOCATION OF UNDERGROUND STRUCTURES AS SHOWN ARE BASED ON THE BEST INFORMATION AVAILABLE BUT NO GUARANTEE IS GIVEN THAT ALL EXISTING UTILITIES ARE SHOWN OR THAT THE GIVEN LOCATIONS ARE EXACT. CONFIRMATION OF EXISTENCE AND EXACT LOCATION OF ALL SERVICES MUST BE OBTAINED FROM THE INDIVIDUAL UTILITIES BEFORE PROCEEDING WITH CONSTRUCTION.

B.M. 39-024 ELEV. 238.678	N.E. Cor. Booth Dr. & Meadowlark Pl., Tblt. in most Sly. Conc. foundation of Bruce Jr. High School No. 333 Booth Dr., 0.3 m W. & 0.2 m below brick of S.E. Cor. of school.		
NO.	REVISIONS	DATE	BY

DESIGNED BY	JKH	CHECKED BY	HAK
DRAWN BY	DML	APPROVED BY	BWB
SCALE:	HORIZONTAL 1:250 VERTICAL 1:50		
DATE	2017 05 11	RELEASED FOR CONSTRUCTION	KAS ZUREK
DATE	2017 05 17		

ENGINEER'S SEAL
 ORIGINAL SIGNED BY H.A. KATZ
 2017 05 17
 CONSULTANT DRAWING NUMBER

THE CITY OF WINNIPEG
 WATER AND WASTE DEPARTMENT
 ENGINEERING DIVISION

2017 WATER MAIN RENEWALS
 CONTRACT 9
MEADOWLARK PLACE
 BOOTH DRIVE TO
 10 m N OF ATHLONE DRIVE (SOUTH LEG)

SHEET 7 OF 21
 CITY DRAWING NUMBER
D-14744