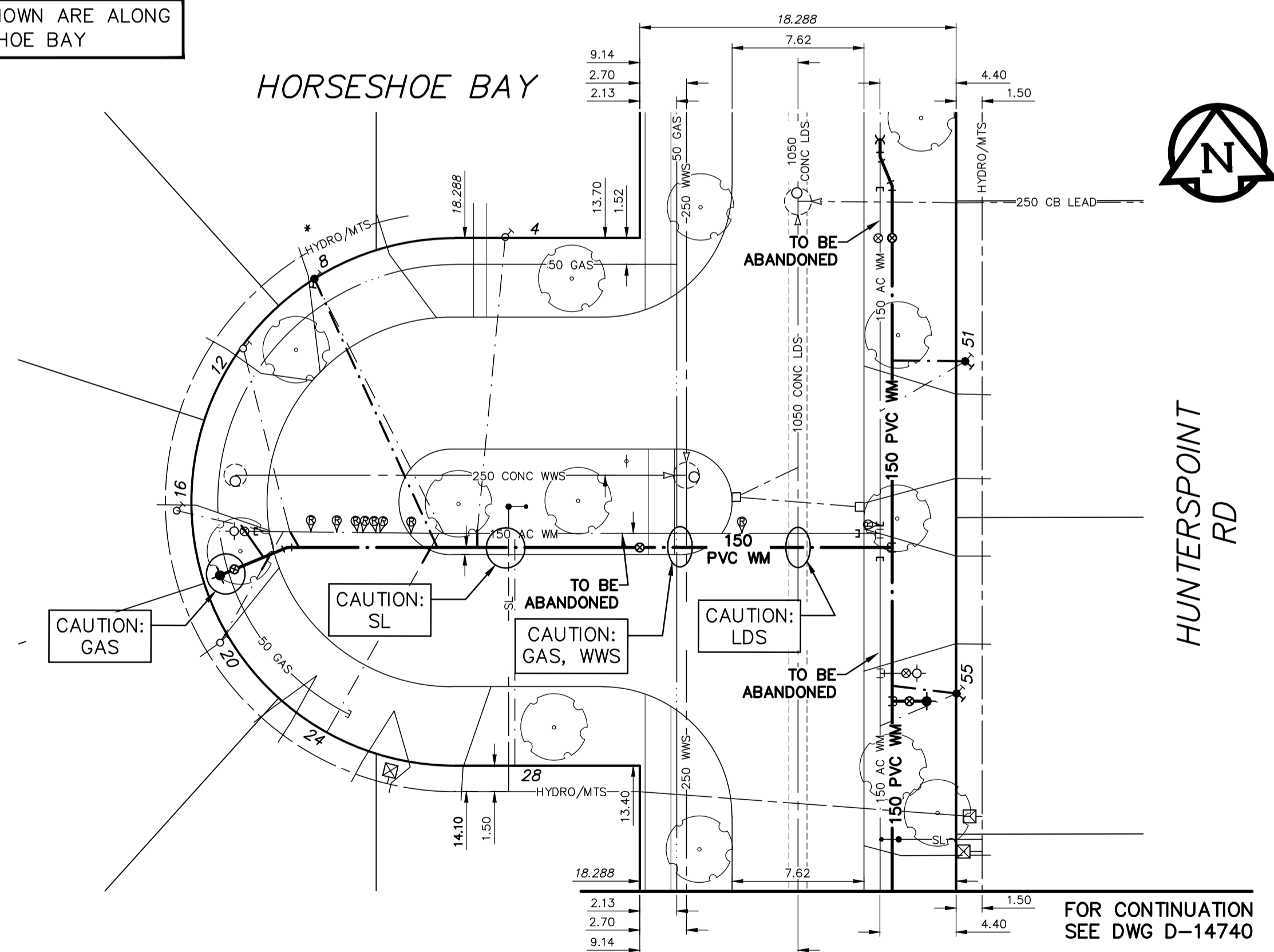


NOTE: CHAINAGES SHOWN ARE ALONG  
 Q OF HORSESHOE BAY



**WATER SERVICE INFORMATION**

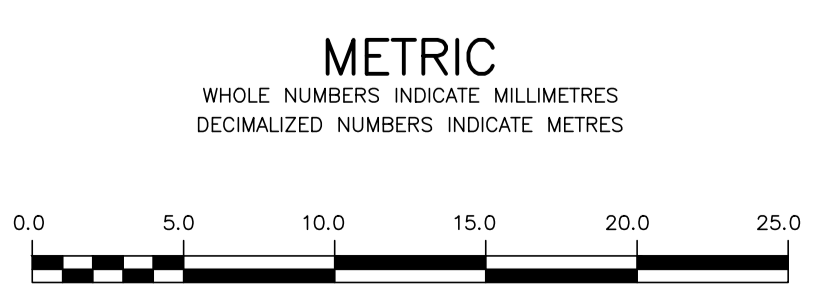
ADDRESS	SIZE (mm) MATERIAL	SIZE (mm) MATERIAL	SHORT & LONG MEASUREMENT (STREET) (PROP.)	CORP. LOCATION	REMARKS
4 HORSESHOE BY RESIDENTIAL	20 CU	20 CU	8.0 WELL	14 WSC	RECONNECT SERVICE
8 HORSESHOE BY RESIDENTIAL	20 PVC	20 CU	1.52 RLHL 5.94 EHYDT @ #16	13.56 EHYDT @ #16	RENEW SERVICE TO PL.
12 HORSESHOE BY RESIDENTIAL	20 CU	20 CU	6.7 WELL 9.75 EHYDT @ #16	3.17 EHYDT @ #16	RECONNECT SERVICE
16 HORSESHOE BY RESIDENTIAL	20 CU	20 CU	5.97 RLHL	2.26 EHYDT @ #16	RECONNECT SERVICE
20 HORSESHOE BY RESIDENTIAL	20 CU	20 CU	5.70 LRHL	2.74 EHYDT @ #16	RECONNECT SERVICE
24 HORSESHOE BY RESIDENTIAL	20 CU	20 CU	2.44 LRHL 4.88 EHYDT @ #16	13.26 EHYDT @ #16	RECONNECT SERVICE
28 HORSESHOE BY RESIDENTIAL	20 CU	20 CU	5.49 WEHL 14.84 EHYDT @ #16	14.17 EHYDT @ #16	RECONNECT SERVICE

\* SERVICES TO BE RENEWED TO P. ALL OTHERS TO BE RECONNECTED



FOR INDEX SEE  
 D-14739

NOTE: ALL VALVES TO BE INSTALLED  
 CLOCKWISE TO CLOSE



**WARNING**  
 IF POWER EQUIPMENT OR EXPLOSIVES  
 ARE TO BE USED FOR EXCAVATION ON THIS  
 PROJECT THE CONTRACTOR MUST:  
 1) NOTIFY THE GAS COMPANY OF THE  
 PROPOSED LOCATION OF EXCAVATION.  
 2) TAKE PRECAUTION TO AVOID DAMAGE TO  
 GAS COMPANY INSTALLATIONS.  
 SEE PROVINCIAL REGULATION 21072 FOR DETAILS

**LOCATION APPROVED  
 UNDERGROUND STRUCTURES**  
 SUPV. U/G STRUCTURES COMMITTEE DATE  
 NOTE:  
 LOCATION OF UNDERGROUND STRUCTURES AS  
 SHOWN ARE BASED ON THE BEST INFORMATION  
 AVAILABLE BUT NO GUARANTEE IS GIVEN THAT ALL  
 EXISTING UTILITIES ARE SHOWN OR THAT THE GIVEN  
 LOCATIONS ARE EXACT. CONFIRMATION OF  
 EXISTENCE AND EXACT LOCATION OF ALL  
 SERVICES MUST BE OBTAINED FROM THE INDIVIDUAL  
 UTILITIES BEFORE PROCEEDING WITH CONSTRUCTION.

B.M. 48-026 N. side of Roblin Blvd. in median of Barker Blvd., Tbt on top of  
 ELEV. 237.183  
 0.05 m dia. x 2.4 m iron pipe, 12.2 m N. of C.L. Conc. Pavt. of  
 W. bound traffic lanes of Roblin Blvd. produced from the W. & 5.0  
 m W. of C.L. Conc. Pavt. of N. bound traffic lanes of Barker Blvd.

NO.	REVISIONS	DATE	BY

DESIGNED BY	JKH	CHECKED BY	HAK
DRAWN BY	DML	APPROVED BY	BWB
SCALE: HORIZONTAL VERTICAL	1:250 1:50	RELEASED FOR CONSTRUCTION	KAS ZUREK
DATE	2017 05 11	DATE	2017 05 17

ENGINEER'S SEAL  
 ORIGINAL SIGNED  
 BY H.A. KATZ  
 2017 05 17

**THE CITY OF WINNIPEG**  
 WATER AND WASTE DEPARTMENT  
 ENGINEERING DIVISION

2017 WATER MAIN RENEWALS  
 CONTRACT 9  
**HORSESHOE BAY**  
 WEST LIMIT OF HORSESHOE BAY TO  
 HUNTERSPOINT ROAD

SHEET 4 OF 21  
 CITY DRAWING NUMBER  
**D-14741**