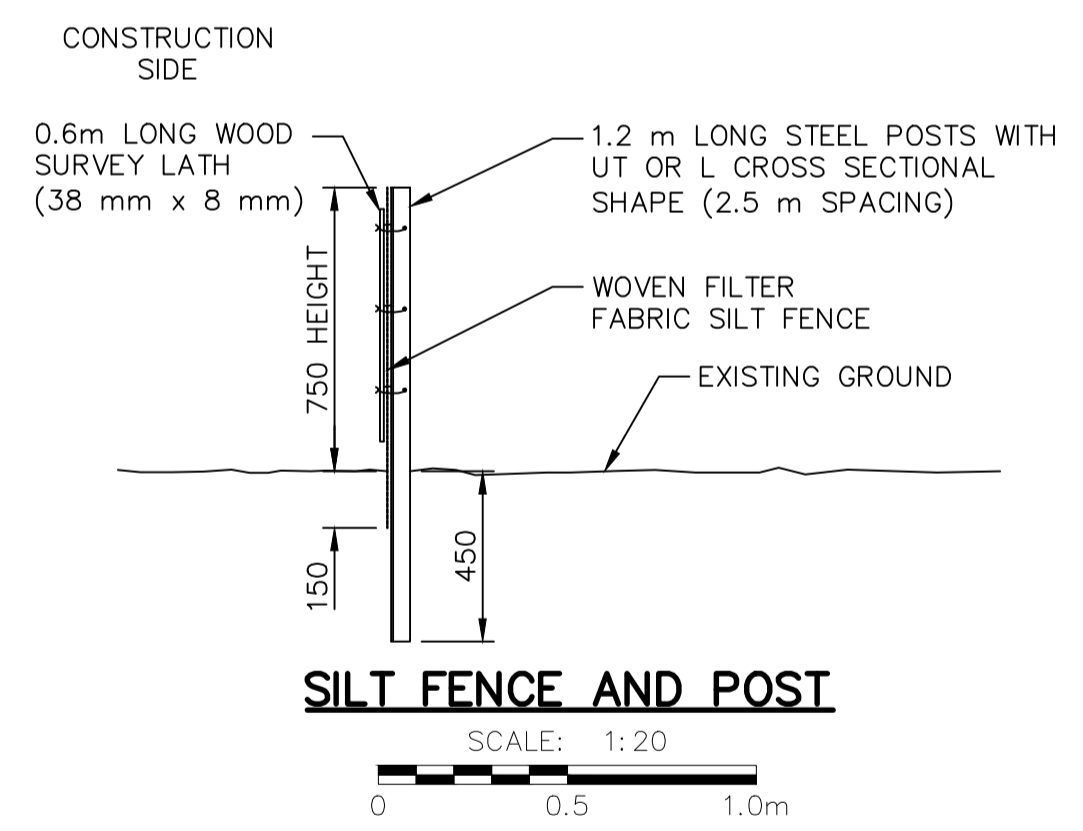
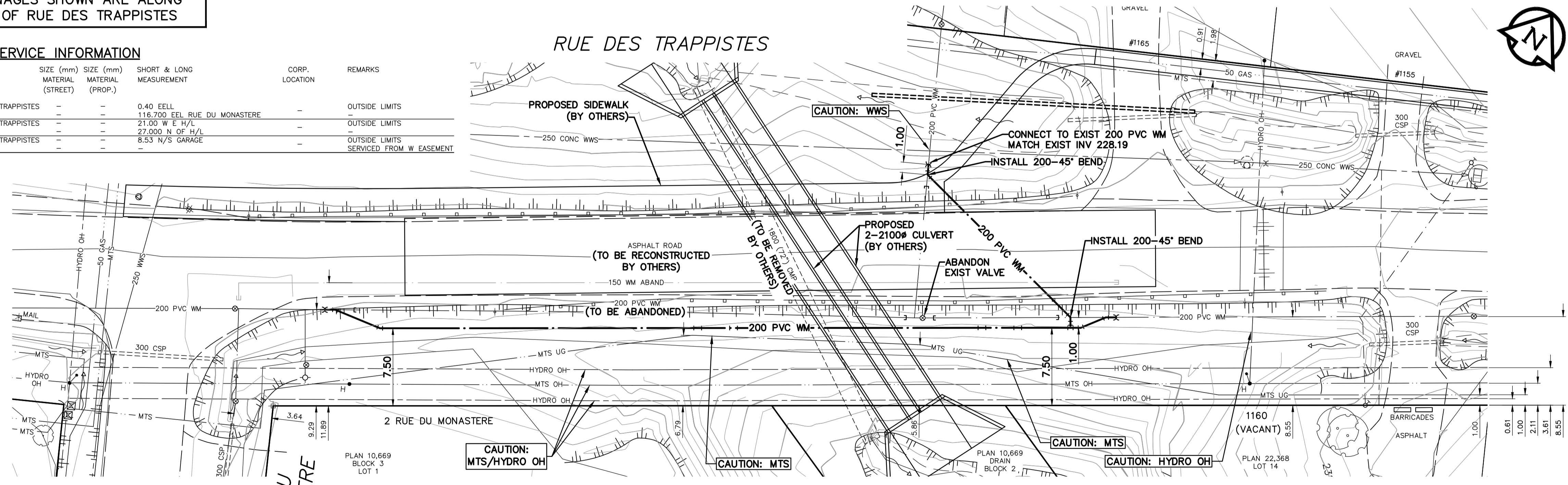


NOTE: CHAINAGES SHOWN ARE ALONG S. P. OF RUE DES TRAPPISTES

WATER SERVICE INFORMATION

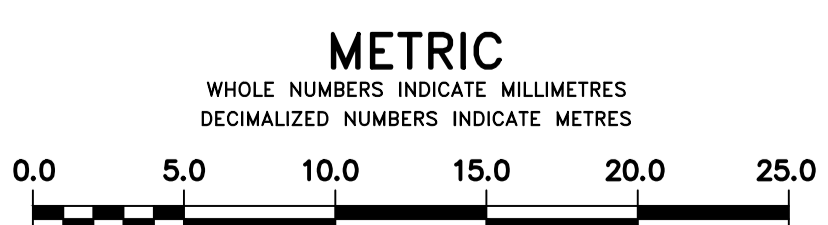
ADDRESS	SIZE (mm) MATERIAL (STREET)	SIZE (mm) MATERIAL (PROP.)	SHORT & LONG MEASUREMENT	CORP. LOCATION	REMARKS
1155 RUE DES TRAPPISTES RESIDENTIAL	-	-	0.40 EELL	-	OUTSIDE LIMITS
1160 RUE DES TRAPPISTES RESIDENTIAL	-	-	118.700 EEL RUE DU MONASTERE	-	OUTSIDE LIMITS
1165 RUE DES TRAPPISTES RESIDENTIAL	-	-	21.00 W E H/L	-	OUTSIDE LIMITS
1165 RUE DES TRAPPISTES RESIDENTIAL	-	-	27.000 N OF H/L	-	OUTSIDE LIMITS
1165 RUE DES TRAPPISTES RESIDENTIAL	-	-	8.53 N/S GARAGE	-	SERVICED FROM W EASEMENT



ENGINEERS
GEOSCIENTISTS
 MANITOBA
 Certificate of Authorization
 MORRISON HERSHFIELD
 No. 1736

FOR INDEX SEE
 D-14739

NOTE: ALL VALVES TO BE INSTALLED
 CLOCKWISE TO CLOSE



LOCATION APPROVED
 UNDERGROUND STRUCTURES

SUPV. U/G STRUCTURES COMMITTEE DATE

NOTE:
 LOCATION OF UNDERGROUND STRUCTURES AS SHOWN ARE BASED ON THE BEST INFORMATION AVAILABLE BUT NO GUARANTEE IS GIVEN THAT ALL EXISTING UTILITIES ARE SHOWN OR THAT THE GIVEN LOCATIONS ARE EXACT. CONFIRMATION OF EXISTENCE AND EXACT LOCATION OF ALL SERVICES MUST BE OBTAINED FROM THE INDIVIDUAL UTILITIES BEFORE PROCEEDING WITH CONSTRUCTION.

B.M. 88-029
 ELEV. 231.421
 N. side Rue des Trappistes, @ Rue Du Monastere; Tbit, on top of 0.05 m dia. x 2.4 m iron pipe, 23.5 m W, of W. wall & 22.0 m N. of N. wall of attached garage on N. side of No. 2 Rue Du Monastere.

DESIGNED BY HAK
 CHECKED BY RPB
 DRAWN BY DML
 APPROVED BY BWB
 SCALE: HORIZONTAL 1:250
 VERTICAL 1:50
 RELEASED FOR CONSTRUCTION
 KAS ZUREK
 DATE 2017 03 17
 DATE 2017 05 17

MORRISON HERSHFIELD

ENGINEER'S SEAL

ORIGINAL SIGNED
 BY H.A. KATZ
 2017 05 17

CONSULTANT DRAWING NUMBER



THE CITY OF WINNIPEG
 WATER AND WASTE DEPARTMENT
 ENGINEERING DIVISION

RUE DES TRAPPISTES AT WESTENDORF
 COULEE CULVERT REPLACEMENT
WATER MAIN RELOCATION
 RUE DU MONASTERE TO
 450 m W OF VILLENEUVE BOULEVARD

SHEET 21 OF 21

CITY DRAWING NUMBER

D-14643