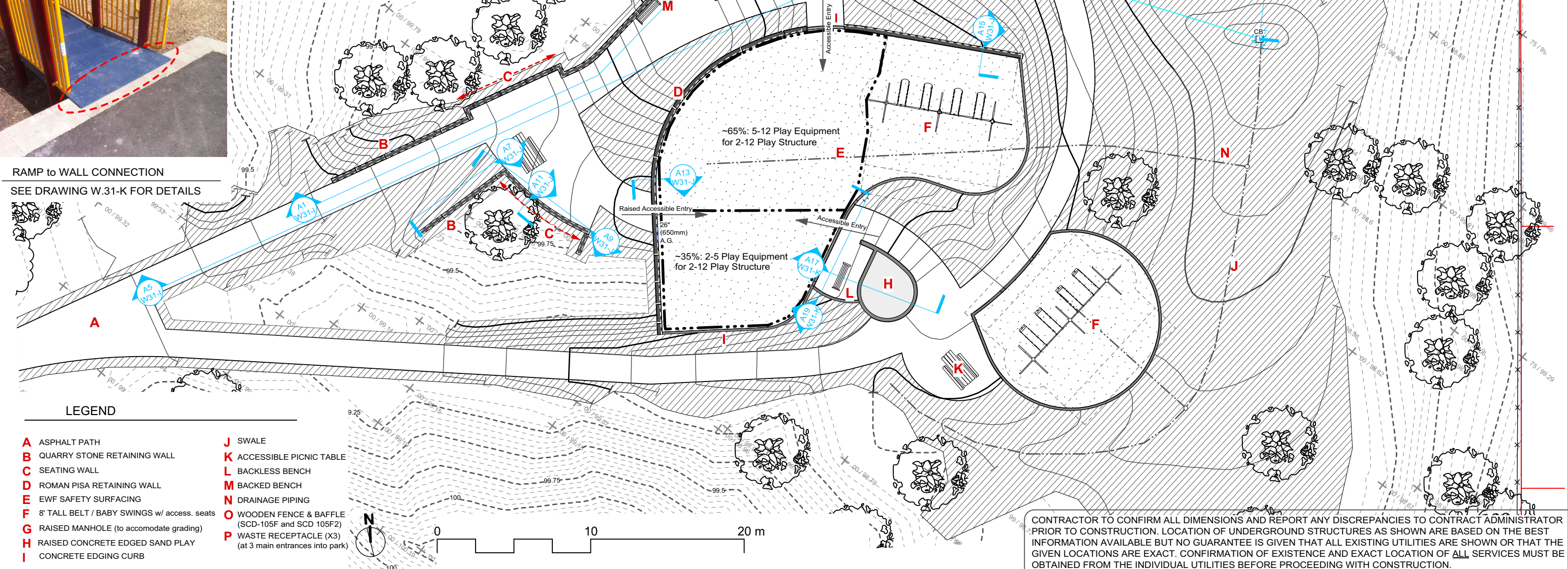


SITE EXTENTS W/ PROPOSED DESIGN OVERLAY  
SCALE: NTS



RAMP to WALL CONNECTION  
SEE DRAWING W.31-K FOR DETAILS



LEGEND

- A** ASPHALT PATH
- B** QUARRY STONE RETAINING WALL
- C** SEATING WALL
- D** ROMAN PISA RETAINING WALL
- E** EWF SAFETY SURFACING
- F** 8' TALL BELT / BABY SWINGS w/ access. seats
- G** RAISED MANHOLE (to accomodate grading)
- H** RAISED CONCRETE EDGED SAND PLAY
- I** CONCRETE EDGING CURB
- J** SWALE
- K** ACCESSIBLE PICNIC TABLE
- L** BACKLESS BENCH
- M** BACKED BENCH
- N** DRAINAGE PIPING
- O** WOODEN FENCE & BAFFLE (SCD-105F and SCD 105F2)
- P** WASTE RECEPTACLE (X3) (at 3 main entrances into park)

CONTRACTOR TO CONFIRM ALL DIMENSIONS AND REPORT ANY DISCREPANCIES TO CONTRACT ADMINISTRATOR PRIOR TO CONSTRUCTION. LOCATION OF UNDERGROUND STRUCTURES AS SHOWN ARE BASED ON THE BEST INFORMATION AVAILABLE BUT NO GUARANTEE IS GIVEN THAT ALL EXISTING UTILITIES ARE SHOWN OR THAT THE GIVEN LOCATIONS ARE EXACT. CONFIRMATION OF EXISTENCE AND EXACT LOCATION OF ALL SERVICES MUST BE OBTAINED FROM THE INDIVIDUAL UTILITIES BEFORE PROCEEDING WITH CONSTRUCTION.



THE CITY OF WINNIPEG  
Planning, Property and Development Department  
Planning and Land Use Division  
Unit 15 - 30 Fort Street, Winnipeg, MB, (R3C 4X5)

DESIGNED BY	IL	CHECKED BY	IL	MANAGER, PARK AND OPEN SPACES	DATE
DRAWN BY	IL/IM	APPROVED BY	IL		
HORIZ. SCALE				MANAGER, PLANNING AND LAND USE DIVISION	DATE
VERT. SCALE	1:250				
DATE	MAY 2017				

DRAWING TITLE	DRAWING NO.
<b>Whitegates Park PLAYGROUND IMPROVEMENTS Overall Plan</b>	<b>W.31-D</b>
SITE ADDRESS	BID OPPORTUNITY NO.
246 Whitegates Crescent	<b>392-2017</b>