

No.	Date	Revision Notes
1.	2017.05.02	Issued for Construction
2.	2017.06.01	Issued for AddP01E
3.	2017.06.06	Issued for AddP03ME



NOTE:
NOT ALL SYMBOLS SHOWN ON THIS LEGEND ARE NECESSARILY USED ON THIS PROJECT.

LIGHTING

- LINEAR FLUORESCENT LUMINAIRE, TYPE 'A' AS SPECIFIED. HATCHING DENOTES CONNECTED TO EMERGENCY/NIGHT LIGHTING CIRCUIT
- CEILING MOUNTED LUMINAIRE, TYPE 'A' AS SPECIFIED
- WALL MOUNTED LUMINAIRE, TYPE 'A' AS SPECIFIED
- DOUBLE SURFACE MOUNTED EMERGENCY LIGHTING REMOTE HEADS, TYPE 'BU-1' INDICATES BATTERY BANK FED FROM
- EMERGENCY LIGHTING BATTERY UNIT C/W DUPLEX RECEPTACLE AND DOUBLE REMOTE HEADS, TYPE 'BU-1' AS SPECIFIED.
- WALL MOUNTED DOUBLE FACED EXIT LIGHT AND DIRECTIONAL ARROWS AS INDICATED. SHADED AREAS DENOTE DIRECTION OF FACE OF EXIT SIGN. 'BU-1' INDICATES BATTERY UNIT FED FROM.
- WALL MOUNTED SINGLE FACED EXIT LIGHT AND DIRECTIONAL ARROWS AS INDICATED. SHADED AREAS DENOTE DIRECTION OF FACE OF EXIT SIGN.
- CEILING MOUNTED SINGLE FACED EXIT LIGHT AND DIRECTIONAL ARROWS AS INDICATED. SHADED AREAS DENOTE DIRECTION OF FACE OF EXIT SIGN.
- COMBINATION CEILING MOUNTED SINGLE FACED EXIT LIGHT, DIRECTIONAL ARROWS & DOUBLE REMOTE HEAD AS INDICATED. SHADED AREAS DENOTE DIRECTION OF FACE OF EXIT SIGN.

EQUIPMENT CONNECTIONS AND CONTROLS

- DIRECT CONNECTION - 120 OR 208V AS SPECIFIED
- MOTOR CONNECTION C/W UNFUSED DISCONNECT SWITCH
- POWER ACTIVATED DOOR EXIT BUTTON SUPPLIED BY DOOR HARDWARE SUPPLIER, WIRED BY ELECTRICAL
- RECESSED MOUNTED ELECTRICAL PANEL - 'SP' DENOTES PANEL DESIGNATION
- SURFACE MOUNTED ELECTRICAL PANEL - 'SP' DENOTES PANEL DESIGNATION

LIGHTING CONTROL

- ONE, TWO AND THREE GANG SINGLE POLE TOGGLE SWITCHES
- SWITCH MOUNTED OCCUPANCY SENSOR, TYPE 'A' AS SPECIFIED
- CEILING MOUNTED OCCUPANCY SENSOR, TYPE 'A' AS SPECIFIED
- DIMMER SWITCH, TYPE 'A' AS SPECIFIED

SECURITY AND ACCESS SYSTEMS

- MOTION DETECTING
- DOOR CONTACT
- ROUGH IN FOR CCTV

ELECTRICAL SYMBOL LEGEND

FIRE ALARM SYSTEM

- PULL STATION
- HORN STROBE
- AUTOMATIC COMBINATION FIXED TEMPERATURE/RATE OF RISE HEAT DETECTOR - CEILING MOUNTED
- CO DETECTOR C/W SOUNDER BASE
- SMOKE DETECTOR - CEILING MOUNTED
- FIRE ALARM STROBE WALL OR CEILING MOUNTED

GENERAL POWER

- 15A, U-GROUND DUPLEX RECEPTACLE
- 20A, U-GROUND DUPLEX RECEPTACLE
- 15A, U-GROUND DUPLEX RECEPTACLE C/W GROUND FAULT CIRCUIT INTERRUPTER - MOUNTED ABOVE COUNTER
- (5-20R) T-SLOT U-GROUND DUPLEX RECEPTACLE C/W GROUND FAULT CIRCUIT INTERRUPTER
- 15A, U-GROUND DUPLEX RECEPTACLE - FLUSH FLOOR MOUNTED UNLESS NOTED OTHERWISE
- (5-20R) T-SLOT U-GROUND DUPLEX RECEPTACLE - FLUSH CEILING MOUNTED UNLESS NOTED OTHERWISE

MISCELLANEOUS

- INDICATES EXISTING DEVICE TO REMAIN
- INDICATES EXISTING DEVICE TO BE MOVED
- INDICATES EXISTING DEVICE IN RELOCATED POSITION
- INDICATES EXISTING DEVICE TO BE DEMOLISHED
- INDICATES CONDUIT
- ELECTRICAL DRAWING NOTES

COMMUNICATIONS

- COMBINATION VOICE/DATA OUTLET - WALL MOUNTED
- TELEPHONE OUTLET - FLUSH FLOOR MOUNTED
- COMBINATION VOICE/DATA OUTLET - FLUSH CEILING MOUNTED UNLESS NOTED OTHERWISE

ELECTRICAL DRAWING LIST

- E1.0 ELECTRICAL SYMBOL LEGEND & DRAWING LIST
- E1.1 SITE PLAN - ELECTRICAL RENOVATION LAYOUT
- ED2.0 BASEMENT - ELECTRICAL DEMOLITION LAYOUT
- ED2.1 MAIN FLOOR - ELECTRICAL DEMOLITION LAYOUT
- EL2.0 BASEMENT - ELECTRICAL LIGHTING RENOVATION LAYOUT
- EL2.1 MAIN FLOOR - ELECTRICAL LIGHTING RENOVATION LAYOUT
- EP2.0 BASEMENT - ELECTRICAL POWER & SYSTEMS RENOVATION LAYOUT
- EP2.1 MAIN FLOOR - ELECTRICAL POWER & SYSTEMS RENOVATION LAYOUT
- E5.0 PANELBOARD SCHEDULES

ABBREVIATIONS

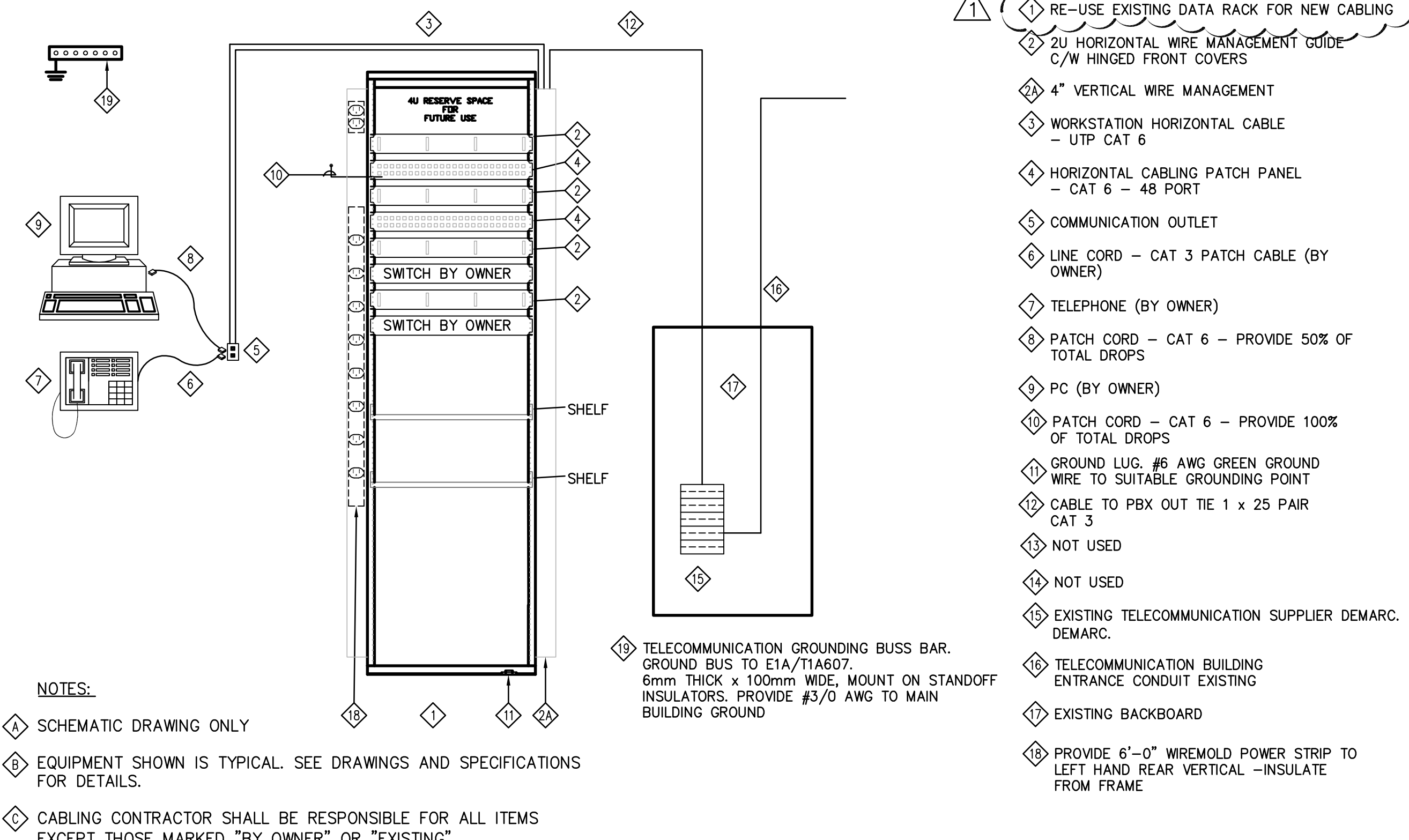
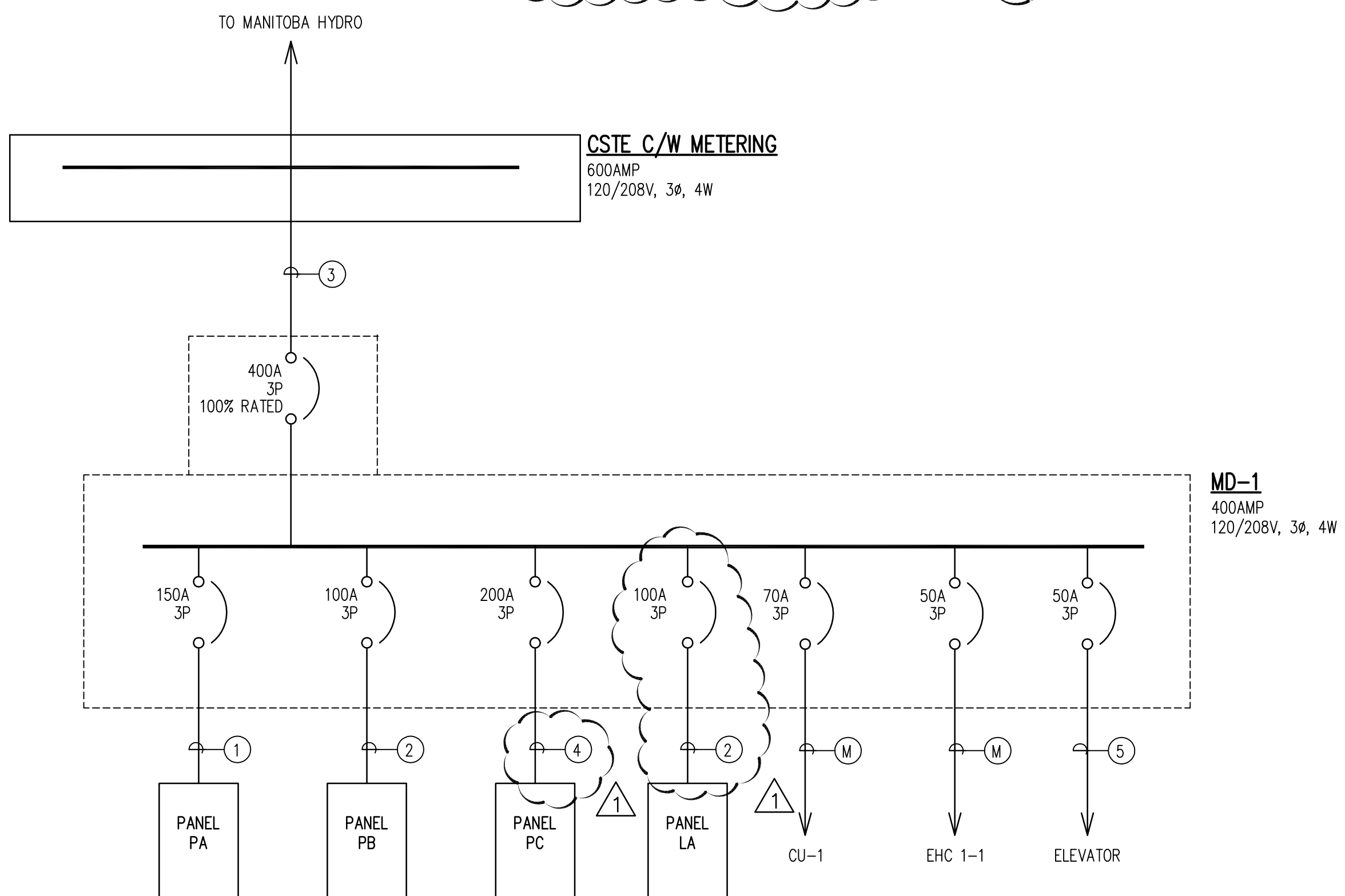
AFF - ABOVE FINISHED FLOOR	MIC - MICROWAVE
AFG - ABOVE FINISHED GRADE	MV - EXISTING TO BE MOVED
BB - BASEBOARD HEATER	MW - MOUNTED IN MILLWORK
BU - BATTERY UNIT	NIC - NOT IN CONTRACT
CH - CHILDPROOF	NL - NIGHT LIGHT
CP - COPY MACHINE	NTS - NOT TO SCALE
CSTE - CUSTOMER SERVICE TERMINATION ENCLOSURE	PA - PUBLIC ADDRESS
D - DELETE	PR - PRINTER
E - EXISTING	QP - QUAD PLEX
FA - FIRE ALARM	R - RELOCATE(D)
FC - FAN COIL (WHEN USED WITH MOTOR SYMBOL)	TYP - TYPICAL
FF - FORCE FLOW	UC - UNDER COUNTER
FR - FRIDGE	WG - WIRE GUARD
FX - FAX MACHINE	WP - WEATHERPROOF
MD - MAIN DISTRIBUTION	TP - CHILD_PROOF
MFC - MULTI-FUNCTION COPIER	WAP - WIRELESS ACCESS POINT
USB - DUPLEX RECEPTACLE C/W USB CHARGING PORT	

ELECTRIC HEATING

- RECESSED MOUNTED - ELECTRIC FORCE FLOW HEATER, TYPE 'FFH' AS SPECIFIED
- ELECTRIC BASEBOARD HEATER, TYPE 'BB' AS SPECIFIED

FEEDER SCHEDULE

TYPE	DESCRIPTION	AMPACITY
1	4 #1/0 RW90 IN 53mm C	150
2	4 #3 RW90 IN 35mm C	100
3	2X (4#3/0 RW90 IN 53mm C AS PER DIAGRAM D11, DETAIL 2, TABLE 2)	400
4	4#3/0 RW90 IN A 63MM C	200
5	3C #8 M	50
M	REFER TO MOTOR SCHEDULE	



- 1 RE-USE EXISTING DATA RACK FOR NEW CABLING
- 2 2U HORIZONTAL WIRE MANAGEMENT GUIDE C/W HINGED FRONT COVERS
- 3 4" VERTICAL WIRE MANAGEMENT
- 4 WORKSTATION HORIZONTAL CABLE - UTP CAT 6
- 5 HORIZONTAL CABLING PATCH PANEL - CAT 6 - 48 PORT
- 6 COMMUNICATION OUTLET
- 7 LINE CORD - CAT 3 PATCH CABLE (BY OWNER)
- 8 TELEPHONE (BY OWNER)
- 9 PATCH CORD - CAT 6 - PROVIDE 50% OF TOTAL DROPS
- 10 PC (BY OWNER)
- 11 PATCH CORD - CAT 6 - PROVIDE 100% OF TOTAL DROPS
- 12 GROUND LUG, #6 AWG GREEN GROUND WIRE TO SUITABLE GROUNDING POINT
- 13 CABLE TO PBX OUT TIE 1 x 25 PAIR CAT 3
- 14 NOT USED
- 15 NOT USED
- 16 EXISTING TELECOMMUNICATION SUPPLIER DEMARC. DEMARC.
- 17 TELECOMMUNICATION BUILDING ENTRANCE CONDUIT EXISTING
- 18 EXISTING BACKBOARD
- 19 PROVIDE 6"-0" WIREMOLD POWER STRIP TO LEFT HAND REAR VERTICAL -INSULATE FROM FRAME

- NOTES:**
- A SCHEMATIC DRAWING ONLY
 - B EQUIPMENT SHOWN IS TYPICAL. SEE DRAWINGS AND SPECIFICATIONS FOR DETAILS.
 - C CABLING CONTRACTOR SHALL BE RESPONSIBLE FOR ALL ITEMS EXCEPT THOSE MARKED "BY OWNER" OR "EXISTING".

This drawing must not be scaled. The contractors shall verify all dimensions and other data on site prior to commencement of work. Discrepancies, errors, and omissions are to be reported to the Architect prior to proceeding with the Work.

Drawings and specifications as instruments of service are the property of the Architect; the copyright in the same being reserved to him.

No reproduction or revision to these drawings may be made without the permission of the Architect, and when made, must bear his name. All prints to be returned to the Architect upon request.